

Nike bolsters indoor meet

World class athletes, Duck stars highlight events

By Doug Levy
Of the Emerald

The Oregon Indoor track meet is back.

Actually, the meet never left, but there will be a few changes when things get under way for the 22nd annual running on Jan. 30 at Portland's Memorial Coliseum. There is a new track, a new sponsor and a fleet of world-class athletes to boost sagging attendance figures.

The help has come in the form of Nike, the Beaverton shoe manufacturer. Nike has taken on sponsorship of the meet, given money to aid in the building of a new, faster track and furnished members of its own Athletics West club to compete.

One of those athletes will be 20-year-old Carl Lewis, one of the most versatile track and field athletes since the days of Jesse Owens. Lewis, who will compete in the 60-yard dash and the long jump, holds the world indoor long jump record of 28-1 and was the winner of last year's collegiate 100-meter dash (10.13) as he represented the University of Houston.

"It's always good for our guys to be able to run in the Oregon Indoor," says men's track

coach Bill Dellinger. "It's a different experience for them, and an opportunity to have some fun." Adds Oregon women's coach Tom Heinonen, "The Oregon Indoor is an important measuring stick for us. We need this — we've been training since Oct. 1, and we need to know



David Mack

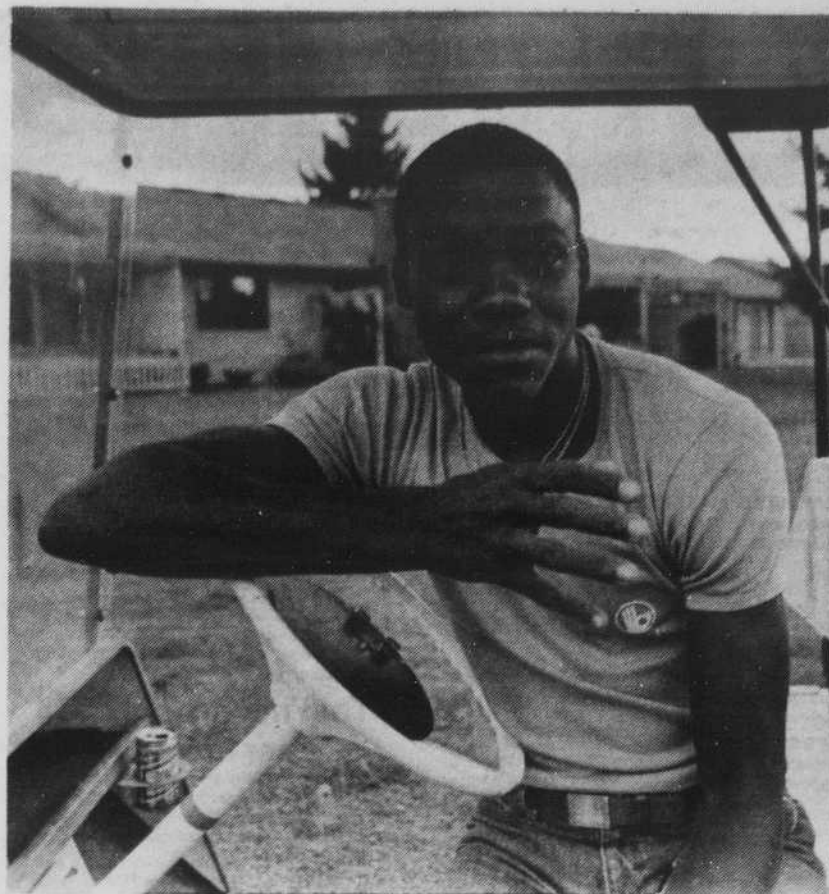
where we stand."

Both coaches are pleased to see world class athletes added to the meet's original Northwest format, particularly with proceeds from the meet going to support the track programs at Oregon and Oregon State.

Certainly, the athletes will look forward to running on the new track, which is sharper and more steeply banked on the turns than the old one to create more speed. "The new facility gives the athletes a chance to excel," acknowledges meet director Al Tarpenning. "The other track was 21 years old; last year Alberto Salazar busted his butt for a good time in the two-mile run and didn't come away with anything."

Tarpenning is also quick to credit Nike in helping to form the meet's new look. "With Nike's help, we can bring in those athletes who are outstanding on the national and international level. Before, we were not able to bring them in because the cost was too high to Oregon State and Oregon. Nike is in the state of Oregon, and their club is in Eugene; it's gratifying to have these things available to us."

Among the names highlight-



World indoor long jump record holder Carl Lewis will compete in the long jump and 60-yard dash at the Oregon Indoor meet in Portland Saturday.

ing the meet will be Tom Byers (mile), Salazar and Don Clary (two-mile) and James Robinson (1000). In addition, several men and women will compete for Oregon. For the men, the entries are headed by David Mack (1000), Jim Hill (two-mile), Lamar Hurd (triple jump), Dean Crouser (shot), Parrish Nixon (500), Dwight Robertson (high hurdles), and George Walcott in the 60-yard dash.

Leading the women will be Leann Warren in the mile, Lexie Miller and Kris Costello in the 60-yard hurdles, Grace Bakari in the 500, and Ranza Clark (unattached) in the 800.

The meet will begin with developmental competition in the afternoon leading into the featured night meet starting at 5:30 p.m. and running until the late evening, covering 32 events.

et al.

DOONESBURY

by Garry Trudeau



BLOOM COUNTY

by Berke Breathed



MEETINGS

The National Student Exchange Program is holding an informational meeting today in the EMU Forum for all students interested in exchanging schools in 1982-83. Also, an NSE student from Hawaii will speak briefly and be available for questions about exchanging with the University of Hawaii.

The Christian Science Organization meets at 5 p.m. today in the EMU to share solving problems spiritually. Everyone is welcome.

Christians for Peace and Justice will meet today at 7 p.m. in Century Room D, EMU. "The Way of Jesus: Peacemaking as Discipleship" is the topic for this discussion meeting. Call 343-6463 for more information.

WORKSHOPS

The Marketing Association is conducting a resume writing workshop today at 4 p.m. in Room 337, Gilbert Hall. All interested students are welcome to attend.

SPEAKERS

"Ergativity, Transitivity and Topicality in Chamorro" is the topic of a lecture by Ann Cooreman, graduate fellow in linguistics, today at 3:30 p.m. in Room 202, Chapman Hall.

FILMS

The Survival Center is initiating an environmental film series at the University.

"Paddle to the Sea" and "Where Will You Hide?" will kick-off the event today at 8 p.m. in Room 123, Science I. Films will be run consecutively each Thursday night for the remainder of the term. Future films include: "Cry of the Wild," "Salmon on the Run," and "Wolf Pack."

CLASSES

Ethical and Biblical Perspectives on Human Sexuality meets on Thursdays at 12:30 p.m. downstairs in the Wesley Center, 1236 Kincaid St. The class is led by Alice Knotts, United Methodist Campus Minister, and Lois Van Leer, Intern for the United Campus Ministries. For more information, contact 686-4694.

MISCELLANEOUS

An Australia Day potluck will be held on Saturday at 6 p.m. at the Westmoreland Housing Community Room. All Australians and friends welcome. B.Y.O. For more details phone 683-1314 and ask for Susan or Graham.

Poetry Reading — today at 8 p.m. in Gallery 141, Lawrence Hall. Poets will include William Pitt Root, author of several books of poems published by Atheneum, including "Striking the Dark Air for Music," and a 1981 nominee for the Pulitzer Prize; and Pamela Uschuk, author of "Light From Dead Stars," anthologized in New America,

and published in Calyx, Malahat Review, Southwest Review, Poetry Seattle. Linda Huber's sculptures will be on exhibit in the gallery. Admission is free. Readings sponsored by the M.F.A. New Writers Series.

Chinese New Year — The University's Chinese Student Association is presenting a Chinese New Year Evening on Sunday beginning at 6:30 p.m. in the EMU Ballroom. The evening will include a traditional Chinese dinner with a variety of dishes, a program of Chinese dances and folk songs, an exhibition of traditional Chinese fashions and customs, a short demonstration of Kung-Fu, and performances on several Chinese musical instruments. Tickets for the evening will cost \$6.50 for general admission and \$5 for University students. Tickets will be available at the Main Desk of the EMU.

Greenpeace Eugene is sponsoring whale watches along the Oregon coast on Sunday and Feb. 6. Buy a ticket in advance to reserve a seat. The three-hour chartered cruise costs \$20 per person. This is the last chance to see the southward migration of the gray whale. Greenpeace's hours are Monday through Friday, 10 a.m. to 5 p.m. Call 687-8121 for more information.

Students interested in majoring in International Studies have until Feb. 8 to apply for Spring term admission to the program. For more information, contact Susan Hayes at 686-5051.

Classifieds

CLASSIFIED ADS CAN BE PLACED AT
ODE OFFICE 300 EMU
UO BOOKSTORE STAMP COUNTER
EMU MAIN DESK

DEADLINES: Ads must be placed by 1 pm one day prior to publication. Ads that are to appear in Monday's paper must be in by 1 pm Friday.

RATES: Rates are 15 cents per word for the first day and 12 cents per word for consecutive days the ad is run without change.

\$1.50 minimum for the first insertion
\$1.20 minimum for consecutive insertions
There is NO refund for ad cancellations

The ODE cannot be responsible for more than one day's incorrect advertising insertion. The ODE's liability for typographical errors, incorrect insertions, or omissions in advertising published shall be limited solely to the cancellation of charges for such portion of space occupied by the error. If you ad appears incorrectly, call 686-4343 before 1 pm for correction in the next day's issue.

The ODE will not knowingly accept advertising which in any manner denigrates or unjustly excludes members of any age, sex, race, color, national, religious or sexual orientation.

PAYMENT: All ads must be paid for in advance unless a billing agreement has been established with us.

For Sale

X-C Ski Rental
\$5 per day
\$9 weekend
HAWKEYES
The Good Life

343-9564 5th Street Public Market 788-WH

FAMOUS MID-EASTERN FALAFEL veggie-packet sandwiches are available at the EMU cafeteria NOW!! Delivered daily in limited quantities. EXPERIENCE IT!! 997-1-29

WOLFE MICROSCOPE (monocular). Quadruple nosepiece, 10x, 3.5x, 45x, 100x magnified substage illuminator. Granulated Mech stage. \$400. 689-1004. 1-29

MEMORY MODULE for HP-41C. Only \$24, new. No postage and handling. No waiting. 484-3192. 1-29

ORANGE SOFA BED Good shape \$75. 485-0729. 1-29

HOMEMADE

bread, soups and desserts. Keystone Cafe, 295 West 5th. Now open Friday and Saturday evenings. 6-10 pm. 1-28

RCA CC010 COLOR VIDEO CAMERA 08:1 zoom with macaro, fade, auto color balance. \$800. 688-4270. 1-29

TIRES AND WHEELS White lettered 60's were on Datsun pickup. \$125. 485-6593. Keep tryin (eves). 2-1

Services

INCOME TAX RETURNS

Professionally prepared. Special rates to students and faculty. 27 East 10th. 484-0303.

Need some statistics? Computers a problem?

I can help. BS. Computers. Minor: Statistics. Tim Berryhill, 682-2321, before 10 am. 2-2

Buy/Sell

REFRIGERATOR Perfect for apartment or keggers. \$40. 686-3239. 1-29

CLONE YOURSELF ONLY \$2.00



In just SECONDS we print an awesome image of you! We can use your own photo too! These images can be transferred to gift items.

CLONE YOUR LOVER, PET OR MOTHER!

Bring this ad and \$2 to GRAPHICALLY YOURS

1128 Alder 343-4343