

Calendar

Thursday

FILM
 Fellini's "City of Women" Bijou Theatre at 7 and 9:30 p.m. \$2.50.
 "Straw Dogs" Bijou Theatre at midnight. \$1.50.
 "Moscow Does Not Believe In Tears" Cinema 7 at 8 p.m. \$3.

MUSIC
 "A Benefit Recital For The Eugene Opera" with Alan Kays. Beall Hall at 8 p.m. \$15.
 Kevin Burke and Michael O'Domhnaill. WOW Hall at 8 p.m. \$4.
 B.J. Kelly's. Greg Tripp. Cover.

THEATER
 "Tobacco Road" Oregon Repertory Theatre at 8 p.m. \$6.
 "Chapter Two" Very Little Theatre at 8:15 p.m. \$4.

Friday

FILM
 "The Seven Percent Solution" 177 Lawrence. 7 and 9:15 p.m. \$1.50 adults, 75 cents children.
 "Richard Pryor In Concert" 150 Geology. 7:30 and 9:30 p.m. \$1.75.
 "City of Women" Bijou Theatre at 7 and 9:30 p.m. \$2.50.
 "Straw Dogs" Bijou Theatre at midnight. \$2.50.
 "Moscow Does Not Believe In Tears" Cinema 7 at 7 and 9:45 p.m. \$3.

MUSIC
 Just Friends and Calliope. WOW Hall at 8:30 p.m. \$3 in advance. \$3 the day of the show.
 B.J. Kelly's. Robert Gray Band. Cover.
 Hooker's Inn. Happy Days. Cover.
 Saturday Market. The Whitetones. Free.

THEATER
 "Inherit The Wind" Robinson Theatre at 8 p.m. \$4.50.
 "Tobacco Road" Oregon Repertory Theatre at 8 p.m. \$7.
 "Chapter Two" Very Little Theatre at 8:15 p.m. \$4.

Saturday

FILM
 "Black Orpheus" 177 Lawrence 7 and 9:15 p.m. \$1.50 adults, \$1 children.
 "Life of Brian" 180 PLC. 7 and 9 p.m. \$1.50.
 "City of Women" Bijou Theatre at 7 and 9:30 p.m. \$2.50.
 "Straw Dogs" Bijou Theatre at midnight. \$2.50.
 "Moscow Does Not Believe In Tears" Cinema 7 at 7 and 9:45 p.m. \$3.

MUSIC
 Eugene Symphony Orchestra SuperPops with Doc Severinsen. Lane County Fairgrounds Convention Center at 8 p.m. \$24, \$12 and \$8, students and seniors \$20.50, \$10.25 and \$7.
 Mark Neilson (on dulcimer). WOW Hall at 8:30 p.m.
 Bluegrass Festival. Western Oregon State College at 10 a.m. \$5 adults, \$4 children.
 B.J. Kelly's. Robert Gray Band. Cover.
 Hooker's Inn. Happy Days. Cover.

THEATER
 "Inherit The Wind" Robinson Theatre at 8 p.m. \$4.50.
 "Tobacco Road" Oregon Repertory Theatre at 8 p.m. \$6.
 "Chapter Two" Very Little Theatre at 8:15 p.m. \$4.

MISCELLANEOUS
 "Star Wars" Episode I on KWAX (91.1 FM) at 8 p.m.

Maude I. Kerns 30th Anniversary at Maude Kerns Art Center at 8 p.m.

Sunday

FILM
 "City of Women" Bijou Theatre at 7 and 9:30 p.m. \$2.50.
 "Moscow Does Not Believe In Tears" Cinema 7 at 2, 7 and 9:45 p.m. \$3.
 Teleprompter Movie Special on KOZY-TV, Cable 11, 2:30 p.m. - midnight.

MUSIC
 Laura Poulin (master's recital on clarinet). Room 198, Music Bldg. at 4 p.m. Calliope and John Workman & Philip Curtis. Dance Works at 8 p.m. \$3.

THEATER
 "Tobacco Road" Oregon Repertory Theatre \$5 at 2 p.m., \$6 at 8 p.m.

Monday

FILM
 "City of Women" Bijou Theatre at 7 and 9:30 p.m. \$2.50.
 "Moscow Does Not Believe In Tears" Cinema 7 at 7 and 9:45 p.m. \$3.

MUSIC
 "Patience" by the Eugene Opera, Sheldon High School at 8 p.m. \$9, \$7.50 and \$5.50 with discounts for students and seniors.

Tuesday

FILM
 "City of Women" Bijou Theatre at 7 and 9:30 p.m. \$2.50.
 "Moscow Does Not Believe In Tears" Cinema 7 at 7 and 9:45 p.m. \$3.

Wednesday

FILM
 "City of Women" Bijou Theatre at 7 and 9:30 p.m. \$2.50.
 "Moscow Does Not Believe In Tears" Cinema 7 at 7 and 9:45 p.m. \$3.

MUSIC
 "Patience" by the Eugene Opera. Sheldon High School at 8 p.m. \$9, \$7.50 and \$5.50 with discounts for students and seniors.

Continuing

University Museum of Art: A Frieze of Ceramic Masks (see page 2B). Shows Oct. 4 - Nov. 8.
 Maude I. Kerns: 30th Anniversary Retrospective Exhibit. LCC: Art Faculty Exhibit through Oct. 20.
 Blair Island Restaurant: Surrealistic paintings by Carol Connett through Oct. 20.

Campus Information:
 686-INFO, ask for tape 651

The Very Little Theatre
 presents

CHAPTER TWO

A Comedy by Neil Simon
 Directed by Karen Saddington

SEPT. 24-26 OCT. 1-3 & 8-10

CALL 344-7751



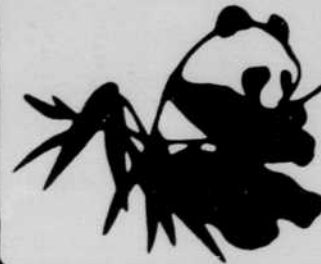
BOX OFFICE OPEN 2-7 TUES-SAT 2350 HILYARD ST.

CHINA BLUE RESTAURANT

BEAN CURD SZECHUAN STYLE

Tofu cooked in special hot sauce;
 a real Chinese Dish

\$4.75



China Blue
 879 E. 13th Ave.
 343-2832

Hours
 Mon thru Fri
 11 am-10 pm
 Sat 5-11 pm
 Sun 5-10 pm

David Lunney,
 Producing Director

ORT on BROADWAY!

Erskine Caldwell's

Tobacco Road

Sept. 13 - Oct. 4

Sun. Dress \$3.50. Mon & Tues. Previews \$4. Wed. Gala Opening \$6. Wed. & Sun. Mat. \$5. Thurs. & Sun. \$6. Fri. & Sat. \$7. Actor's Benefit Performance, Oct. 5 \$5.

Senior Discount \$1 off
 Student Rush. All tickets - price 15 min. before show.
 Curtain Time - 8 p.m.
 Sun. Mat. - 2 p.m.

MIDNIGHT M*A*F*1*A

YANKS 3, DETROIT 0

by Jonathan Reynolds

September 25, 26, October 2, 3, 9 & 10 at Midnight
 October 7, 10 at 9 p.m.
 Tickets \$3.50
 Student Rush \$1 off all tickets 15 min. before show

CELEBRATE ORT'S MOVE TO BROADWAY!

OREGON REPERTORY THEATRE 222 E. BROADWAY 485-1946

Imported

Coffee & Tea

by the pound or by the cup

Kinko's

344-7894 764 E. 13th



Bean of the Month

Brazil Santos

\$4.40 lb.

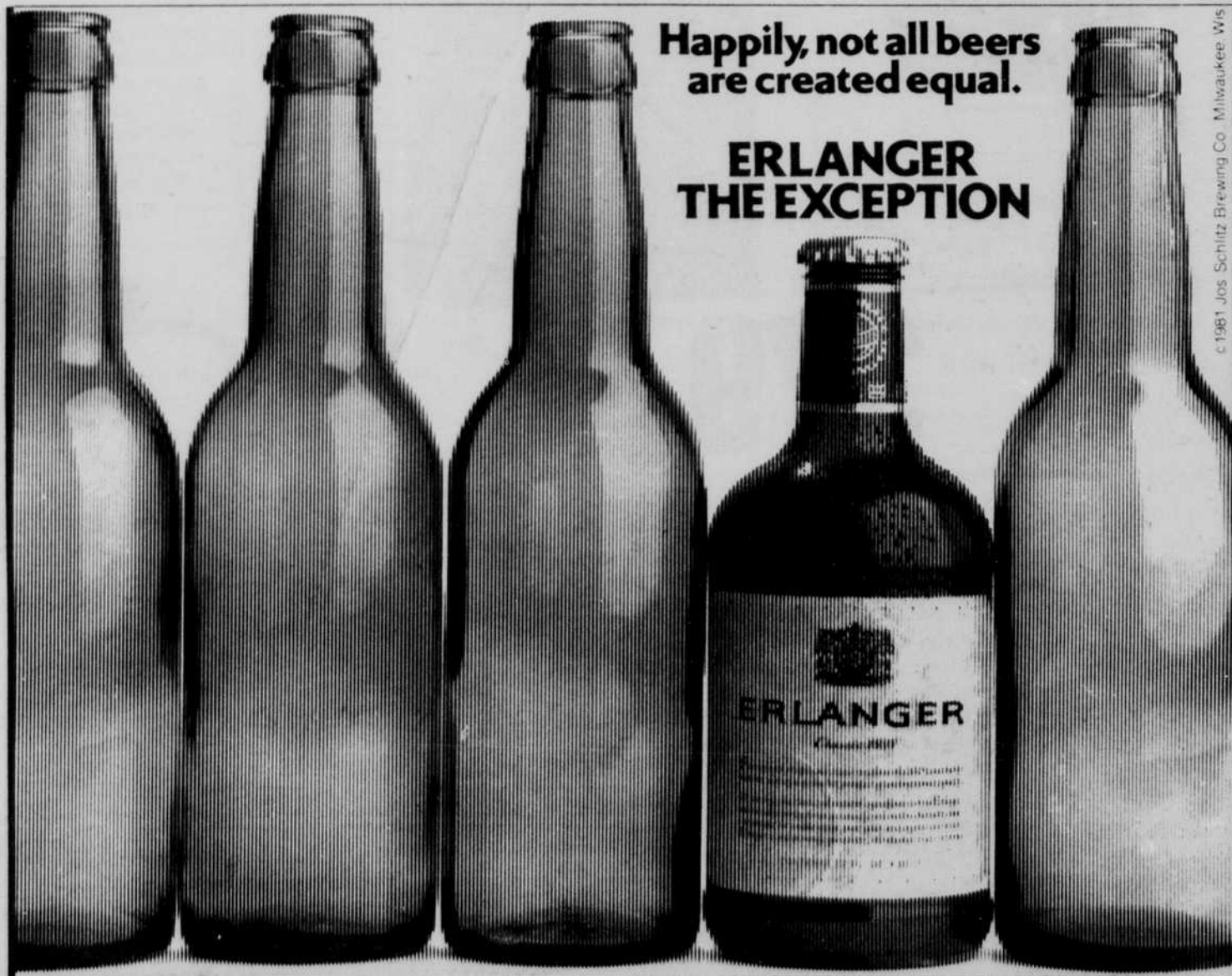
Compare our Prices

Looking for a place to live?

Check the ODE Classifieds

Happily, not all beers are created equal.

ERLANGER THE EXCEPTION



© 1981 Jos. Schlitz Brewing Co. Milwaukee Wis.