

Biologist will discuss genes

The Yale University biologist whose research team was the first to define the location of a human gene on a chromosome will speak April 6 at the University.

Francis Ruddle, professor of biology and human genetics, will give the 1981 Condon lecture at 8 p.m. Monday in Room 150 Geology. He will speak on "Manipulating and Cataloging the Genes of Man."

While in Eugene April 6 and 7, Ruddle also will meet with students in a genetics class, give a biology department seminar and consult with faculty members and graduate students.

The human genetics class meets at 9:30 a.m. Monday in Room 177 Lawrence Hall. The seminar,

entitled "Gene Transfer in Eukaryotes," is at 12:30 p.m. in Room 331 Science II.

"In order to better understand how our genetic library functions, it is important to know where individual genes are located on the chromosomes, and how they are organized in relation to one another," Ruddle says. "The new techniques of somatic cell genetics make this possible."

He indicated that these procedures, popularly known as genetic engineering, allow researchers to clone, or reproduce asexually, human chromosomes and parts of chromosomes in rodent cells to determine their genetic contents.

Mixed Nuts®



briefs

SPEAKERS

Paul Lefebvre of the Massachusetts Institute of Technology biology department will speak on "Expression of developmentally regulated sequences in Dictyostelium" today at 12:30 p.m. in Room 331 Science II. "Cults in America" will be the topic of a Newman Center lecture tonight at 8 p.m. in the EMU Forum Room.

MEETINGS

The Hawaii Club will meet tonight at 7:30 p.m. in the EMU, room to be posted. All those

interested in helping with the luau should attend.

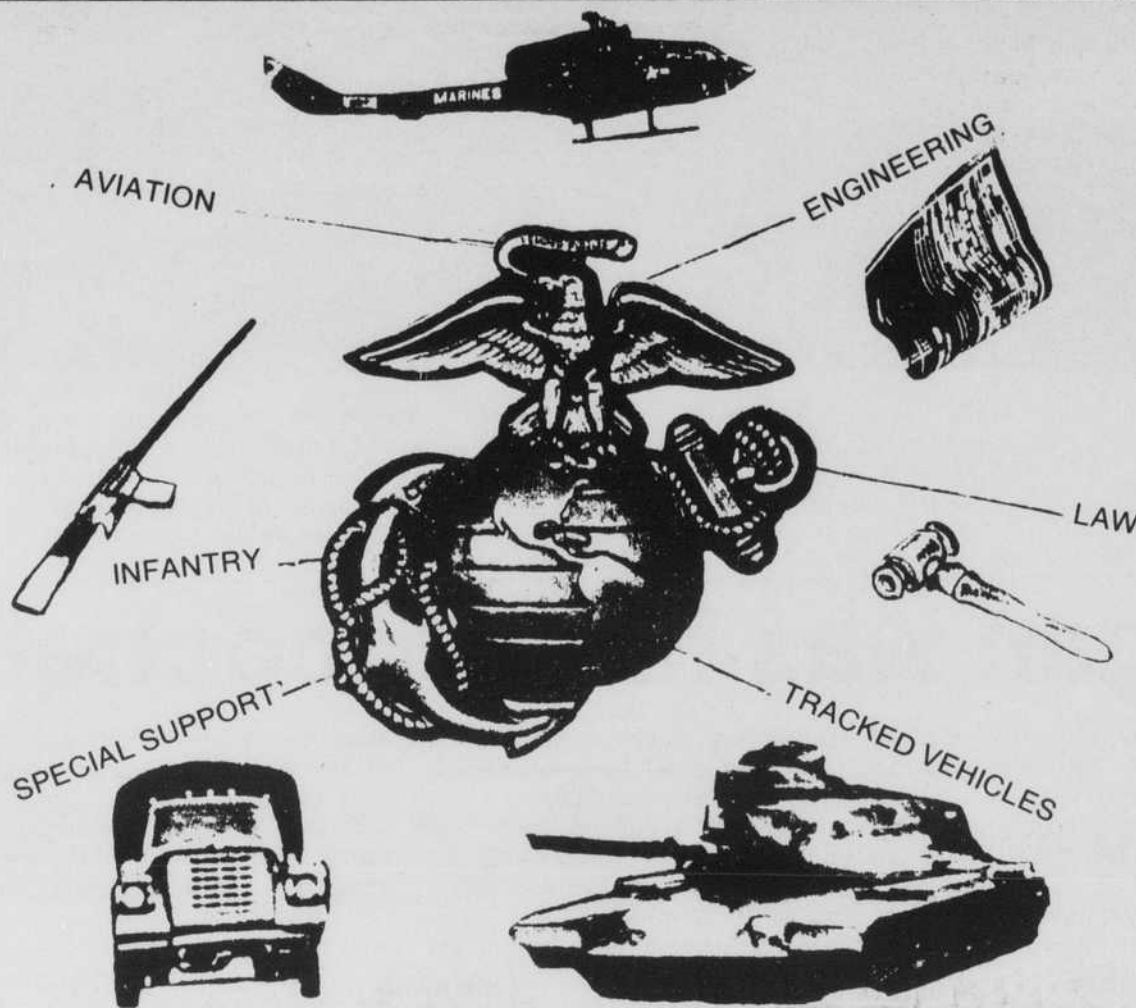
NOTICES

The weekly wildflower walk will leave from the north end of the Autzen Stadium footbridge today at 12:30 p.m. The event is sponsored by the University herbarium.

The Cordoba High School band will perform today at 12:30 p.m. in Beall Hall.

The winners of Switchboard's April Fools riddishare raffle are: first prize of a \$100 gift certificate to the University Bookstore to Paulette Thompson, second prize of a \$50 gift certificate to Evelyn McConnarghey and third prize of \$25 gift certificate to Dennis Pfaff. For more information call Switchboard at 342-HELP.

Faculty Fellowships:
Visiting Professorships for Women in Science and Engineering, Women in Science Program, National Science Foundation, 1800 G Street N.W., Washington, DC 20550. Funds are available from the National Science Foundation to provide visiting professorships for female scientists and engineers at academic institutions within the United States. Applicants should not be currently affiliated with the host institution at the time of the award. Institutions may invite eligible candidates to apply, or contact with prospective host institutions may be initiated by the candidate. Awards usually are for 12 months. Deadline is April 15.



CAREER OPPORTUNITIES CHALLENGE-MANAGEMENT EXPERIENCE

In Ground, Legal & Aviation

SEE THE OFFICER SELECTION TEAM ON CAMPUS:

APRIL 2-3
10 am - 2 pm
ERB MEMORIAL UNION

oregon daily emerald

The Oregon Daily Emerald is published Monday through Friday, except during exam week and vacations, by the Oregon Daily Emerald Publishing Co. at the University of Oregon, Eugene, Oregon 97403.

The Oregon Daily Emerald operates independently of the University with offices on the third floor of the Erb Memorial Union and is a member of the Associated Press.

News and Editorial 686-5511
Display Advertising and Business 686-3712
Classified Advertising 686-4343
Production 686-4381
Circulation 686-5511

Editor Ken Sands
Managing Editor Sally Hodgkinson
News Editor Glenn Boeltcher
Assistant News Editor Jeff Baker
Photo Editor Steve Dykes
Graphics Editor Sioux Anderson

Editorial Page Editor
Sports Editor
Associate Sports Editor
Entertainment Editor

Associate Editors
ASUO
Community Departments and Schools
Environment
Features
Politics
State Systems
Night Editor

General Staff
Advertising Director
Ad Services
Classified Advertising
Controller
Production Manager

Mark Matassa
Tamara Swenson
Jody Murray
Erzsi De'ak

Paul Telles
Richard Wagoner
Marian Green
Leslie Farris
Jim Gersbach
Mike Rust
Bill Manny
Mike Lee

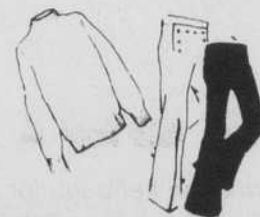
Darlene Gore
Ann Peterson
Sally Oljar
Jean Ownbey
Sandra McMullen



ACTION SURPLUS

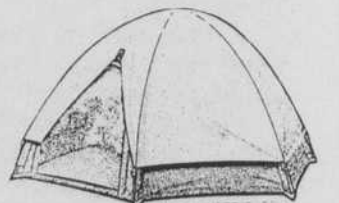
Lane County's Surplus and Outdoor Store

Stop by and see our wide selection of outdoor supplies.



20% off all 100% wool sweaters, pants and shirts.

Pup Tents - Dome Tents - Caddis, Hexagon and Geodesic Tents



Rubber Rafts - 2, 4 or 6 man

Also a shipment of new fatigues and cargo pants just arrived.

We're open 7 days a week!
Mon.-Sat. 9:30-6:00 Sun. 11-4
4251 Franklin Blvd. on the Glenwood strip
just before the Springfield Bridge.

746-1301

Layaways