

HOT WHACKS

is at

DUFFY'S

Friday & Saturday Nite

9-2

Live Music at DUFFY'S Famous
FRIDAY AT 4 Pitcher Sale

Featuring

STEVE MYERS

A Great Way To Prepare For Finals!

Mixed Nuts®



Adams exhibit begins March 22

More than 100 original prints by world-renowned photographer Ansel Adams will be exhibited beginning March 22 at the Museum of Art.

Paintings and prints by a South African artist also will be

featured in the museum's main galleries, a series of lithographs by a University art professor will be displayed in the mezzanine gallery, and two portfolios by a French photographer will be exhibited in the photo gallery.

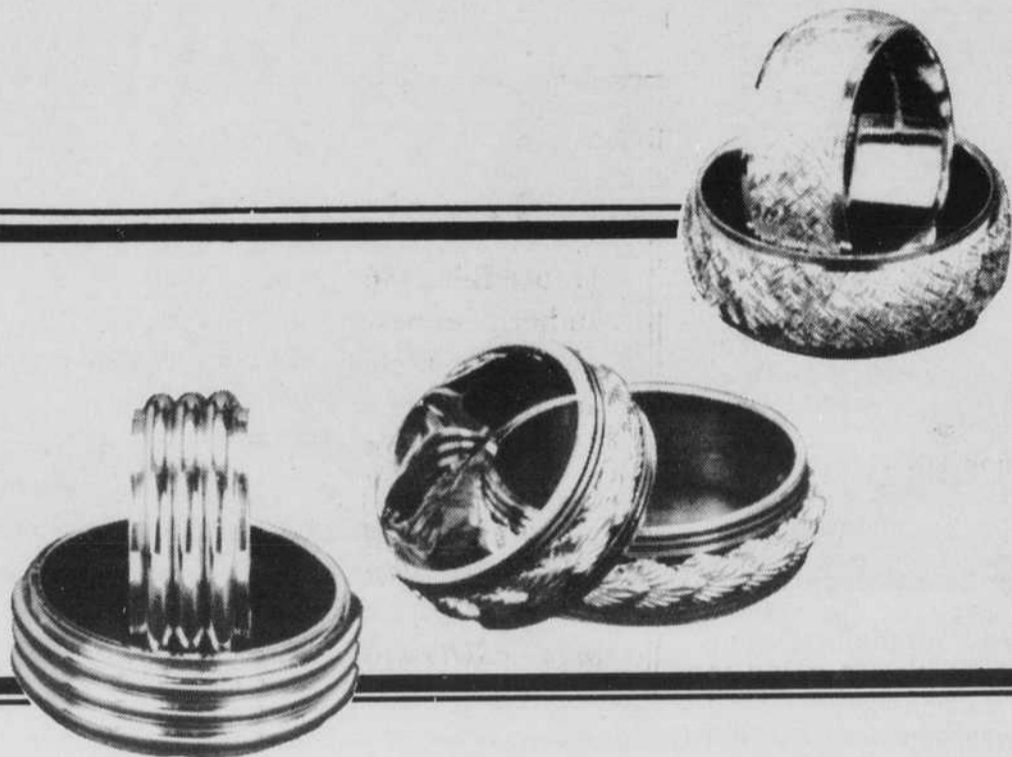
The Adams exhibition, titled "Ansel Adams: Photographs of the Southwest, 1928-68," documents the photographer's 40-year love affair with the people and landscape of southwestern United States. The exhibit, which will be displayed through April 19 in the first floor gallery, includes many of Adams' most famous photographs.

"Ansel Adams, who is now 79 years old, is perhaps the most revered of all living photographers," said Ben Kerns, committee chairman of the "Photography at Oregon Gallery," the exhibition's sponsor. "The Oregon showing is con-

sidered a major chronicle in his life's work."

The work of Thirza Kotzen, a visiting University art instructor from Johannesburg, South Africa, will be exhibited through April 19 in the first floor main gallery. Commenting on her oil paintings and prints, Kotzen says "having lived in and experienced many different environments and cultures throughout South Africa, England, Europe and the United States, I depict my environment in my work by placing everyday objects in symbolic relationships."

A \$1 admission fee will be charged for the Adams' exhibition only. All proceeds will go to the "Photography at Oregon Gallery" committee to help defray costs, with any profits raised set aside to help bring photography shows to the museum in the future.



GOLD WEDDING BANDS

As traditional as the wedding cake, these gold wedding bands for bride and groom symbolize your marriage. Choose one to suit your life-style from Skeie's exceptional selection of traditional and contemporary designs.

Skeie's
Jewelers

1027 Willamette • 345-0354



Valley River Center • 342-4496

daily oregon emerald

The Oregon Daily Emerald is published Monday through Friday, except during exam week and vacations, by the Oregon Daily Emerald Publishing Co. at the University of Oregon, Eugene, Oregon 97403.

The Oregon Daily Emerald operates independently of the University with offices on the third floor of the Erb Memorial Union and is a member of the Associated Press.

News and Editorial 686-5511
Display Advertising and Business 686-3712
Classified Advertising 686-4343
Production 686-4381
Circulation 686-5511

Editor Ken Sands
Managing Editor Sally Hodgkinson
News Editor Glenn Boettcher
Assistant News Editor Jeff Baker
Photo Editor Steve Dykes
Graphics Editor Sioux Anderson

Editorial Page Editor
Sports Editor
Associate Sports Editor
Entertainment Editor

Associate Editors
ASUO
Community Departments and Schools
Environment
Features
Politics
State Systems
Night Editor

General Staff
Advertising Director
Ad Services
Classified Advertising
Controller
Production Manager

Mark Matassa
Tamara Swenson
Jody Murray
Erzsi De'ak

Paul Telles
Richard Wagoner
Marian Green
Leslie Farris
Jim Gersbach
Mike Rust
Bill Manny
Ken Sands

Darlene Gore
Ann Peterson
Sally Oljar
Jean Ownbey
Sandra McMullen

B.J. KELLY'S
TONIGHT & SATURDAY
SLOWTRAIN
\$2.50 cover
Friday the 13th
Celebration
HAPPY HOUR 4-7

briefs

SPEAKERS

Rep. Margie Hendricksen, D-Eugene, will hold her second no-host constituent brunch and legislative discussion Saturday at 11 a.m. in Room 112 EMU.

MEETINGS

The International Christian Fellowship will meet tonight at 7:30 p.m. at the Way Inn, 1332 Kincaid St. A film on Wycliffe Bible translators will be shown. Interested students are invited to attend.

NOTICES

The Baha'i Campus Association will hold a study seminar today at 4 p.m. in Century Room E EMU. Rod Olson will lead the seminar. They also will have a table in the EMU from 9 a.m. to 3 p.m.

GOOD YEAR SERVICE STORES

'10'

SALE ENDS MONDAY

AMF

Men's or ladies' styles

\$89

1610 men 1620 women



Save now on a 10-speed bike for spring. Even looks good sitting by the stereo. Lightweight 21" frame. Easy-reach dual shifters. Side pull brakes.

CHARGE IT!

Goodyear Revolving Charge Account

use any of these other ways to buy:

Our Own Customer Credit Plan
• MasterCard • VISA • Diners Club
• American Express • Carte Blanche

164 W. 7th at 7th & Charnelton
Open Mon.-Fri. 8-5:30 Sat. 8-5

Downtown Eugene
343-2501