

Calendar

Compiled by Bob Webb
Campus Information: 686-INFO

Thursday

FILM
"Don Giovanni" Cinema 7. 8 p.m. \$3.50.
KOZY-TV, Cable 11: "Night Gallery" at 8 p.m. "Double Indemnity" at 10:30 p.m.

Friday

FILM
"The Kids are Alright" 150 Geology. 7 and 9 p.m. \$1.25.
"Jungle Book" 180 PLC. 6:30, 8:45 and 10:30 p.m. \$1.50.
"Don Giovanni" (See Thursday's listing)
KOZY-TV, Cable 11: "Earthquake" at 8:30 p.m. "Psycho" at 11:30 p.m.

MUSIC
Jazz Revisited: Studio vs. Carnegie Hall. KWAX-FM, 91.1. 6:30 p.m.

Jazz Alive: The Chicago Jazz Festival, Part I. KWAX-FM, 91.1. 9 p.m.

MISCELLANEOUS
Winds of Change: self defense and rape prevention. KOZY-TV, Cable 11. 7 p.m.

Saturday

FILM
"Annie Hall" 180 PLC. 7 and 9:15 p.m. \$1.50.
"Richard Pryor Live in Concert" 150 Geology. 7:30 and 9 p.m. \$1.25.
"Don Giovanni" Cinema 7. 2 and 8 p.m. \$2.50 matinee, \$3.50 evening.
KOZY-TV, Cable 11: "Spartacus" at 10 p.m.

MUSIC
The University Consort. Beall Hall. 8 p.m. Free.
The Western Regional Folk Festival, Part I. KLCC-FM, 89.7. Noon.

THEATER
Wisconsin Playwrights. KWAX-FM, 91.1. 8 p.m.

Sunday

FILM
"A Slave of Love" 180 PLC. 7 and 9 p.m. \$1.25.
"Don Giovanni" Cinema 7, following a Champagne Brunch at 11 a.m. in DeFris-

co's. \$15 singles, \$25 couples. Benefit for Eugene Opera. Call 485-3985 for reservations.

KOZY-TV, Cable 11: "The Ghost and Mr. Chicken" at 4 p.m. "The Incredible Shrinking Man" at 10 p.m.

MUSIC
Faculty Artist Series: Neil Wilson, baritone. Beall Hall. 8 p.m.
Big Band Bash: Benny Goodman, Part I. KLCC-FM, 89.7. Noon.

Sunday Afternoon Jazz: Milt Jackson. KLCC-FM, 89.7. 3 p.m.
Album Preview, classical. KWAX-FM, 91.1. 6 p.m.

THEATER
"Misalliance" dress rehearsal. Oregon Repertory Theatre. 8 p.m. \$2.50. Written by Geroge Bernard Shaw. Directed by Will Emery. Call 485-1946 for reservations.

Monday

FILM
"Don Giovanni" (See Thursday's listing)
KOZY-TV, Cable 11: "The Virginian" at 8 p.m. "Artist and Models" at 10:30 p.m.



Walt Disney's animated "Jungle Book," based on the Rudyard Kipling stories, plays on campus Friday.

MUSIC
Piano Jazz: Earl Hines. KLCC-FM, 89.7. 1 p.m.
From the Leftside: Joan Baez. KLCC-FM, 89.7. 7:30 p.m.

Album Preview, jazz. KLCC-FM, 89.7. 10 p.m.

THEATER
"Misalliance" preview. \$3. (See Sunday's listing)

Tuesday

FILM
"Don Giovanni" (See Thursday's listing)

Jan. 9 to Jan. 15

KOZY-TV, Cable 11: "Sirocco" at 8 p.m.
"The Gracie Allen Murder Case" at 10:30 p.m.

MUSIC
Night Jazz. KLCC-FM, 89.7. 10 p.m.

THEATER
"Misalliance" preview. \$3. (See Sunday's listing)

MISCELLANEOUS
Winds of Change: Alan Saporin, director of CORD. KLCC-FM, 89.7. 7 p.m.

Wednesday

FILM
"King: Montgomery to Memphis" 101 EMU. 7:30 p.m. Free.
"The Chant of Jimmie Blacksmith" Cinema 7. 7:30 and 9:35 p.m. \$3.50.
KOZY-TV, Cable 11: "The Black Book" at 8 p.m. "Lone Wolf in Paris" at 10:30 p.m.

MUSIC
Paillard Chamber Orchestra. Beall Hall. 8 p.m. Call 686-3761 for ticket information.
Jazz Alive: The Chicago Jazz Festival, Part II. KLCC-FM, 89.7. 8 p.m.

THEATER
"Misalliance" \$4. (See Sunday's listing)

Continuing

Museum of Art: "Jade, The Stone of Heaven" and oil paintings by Kay Buckner. Main Galleries. Jan. 11-Feb. 8.
"Return of the Manchu Court" Second Floor Gallery, South. Through Jan. 25.

Art and Applied Design Dept., Lane Community College: Mixed Media Sculpture by Mike E. Walsh. Through Jan. 28.

Maude Kerns Art Center: Paintings by Margaret Goodwill. Main Gallery. Through Jan. 31. Photographs by Nancy Jones. Mezzanine Gallery. Through Jan. 29.

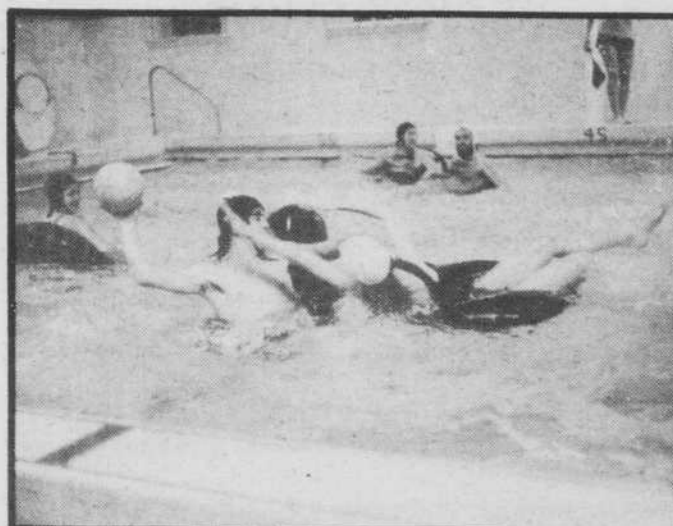
Kairos Gallery: Abstract Landscapes by Margaret Coe. Through Jan. 31.
Opus 5: Raku and stoneware by Ron Weil. Through Jan. 31.

Visions and Perceptions: Serigraphs by Nancy Denison and Jim Boutwell. Through Jan. 31.

Oregon Repertory Theatre Noon Time Gallery: Tapestries by Mina Degifis. 11 a.m.-2 p.m. Monday-Friday. Through February.



FOR ALL THAT YOU DO THIS RIM NEWS IS FOR YOU



Inner Tube Water Polo Action

Welcome back to campus. A wide variety of recreational activities are available to students, faculty and staff. You are invited to get involved now. Check the enclosed box on this page for specific sport deadlines.

Inner Tube Water Polo For a game you can quickly become addicted to try this wild water sport. Easy to learn and a lot of fun. Games are played on Mondays between 5:00 p.m. and 9:00 p.m. at Gerlinger Pool.

Handball Men's handball is played as a team event. Regulation handball rules apply. A team consists of 1 doubles and 2 singles matches. Matches are scheduled Monday through Friday at 3:35. A single elimination tournament is set up for this event.

SCHEDULE OF ACTIVITIES Winter of 1981				
Intramurals	Division	Minimum # Plays	Entry Deadline	Starting Date
Basketball	M-W	5	Noon, Jan. 12 **	January 14
Handball	M	4	5 pm, Jan. 12 **	January 14
Soccer	M	9	5 pm, Jan. 14 **	January 17
Soccer	W	6	5 pm, Jan. 14 **	January 17
Inner Tube	C	6	5 pm, Jan. 14 **	January 19
Water Polo				
Racquetball	M-W	3	5 pm, Jan. 26	January 28 (tentative)
All Campus Championships				
Tennis Doubles ***	M-W	2	January 23	January 24
Inner Tube Race ****	M-W	1	February 2	February 2
(Super Stars)				
Racquetball Mixed	C	2	February 6	February 7
Doubles ***				
Free Throw Contest ***	M-W	1	February 12	February 12
(Super Stars)				
Scotch Doubles	M-W	2	TBA	TBA
Bowling ***				
Fun Runs ***	M-W	1		January 28, February 10, February 25
Special Events				
Sports Photography Contest	M-W	1	TBA	
Jujitsu	M-W	1		TBA
Circus Sports	M-W	1		TBA

Soccer Games are scheduled on Saturday and Sunday between 10:30 a.m. and 4:00 p.m. at Autzen Stadium. Leagues include a 9 player game for men in Division I and II and a 6 player game for women. The season begins January 17 and ends March 14.

Basketball Play will begin on January 14 — don't delay enter now. There are team limitations. League's include Men's I and II, Women's I and II, Co-ed I and II. All of these divisions include league games leading to play-offs. Divisions III (men, women, co-ed) provides an opportunity to play in the true recreational sense — games are unofficial.

Racquetball Women's and men's racquetball is played as a single elimination team event. A team consists of 3 singles events. Matches are scheduled to begin January 28 (tentative). Matches are scheduled on the outdoor courts Monday through Friday at 3:35 p.m.

Entry Forms for winter activities are available at 103 Gerlinger in the RIM office. Also available is the winter term information and forfeit deposit flyers.

Players Without Partners is a service for tennis, racquetball and squash players. People wishing to register on the list may then use the list to find others who are seeking partners. Lists are kept for beginning, intermediate and advanced players.

Joggers Service Looking for someone to jog/run at your pace and at a time that is convenient? Register at the RIM office indicating your preferences. You may then use the registration list to find a jogging partner.

Budweiser and Western Beverage Company presents this page as a service to students interested in recreation and intramurals. Publication of RIM Highlights should not be interpreted in any way as endorsement of the sponsor's product by the University of Oregon.

DUFFY'S JANUARY EVENTS

SUNDAY	MONDAY	TUESDAY	WEDNESDAY	THURSDAY	FRIDAY	SATURDAY
4	5	6	7	8	9	10
Duffy's Pool Tourney 4:00 pm	PAC 10 Game of the Week 65c Pounders Duffy's Pool Tourney 8:30 pm	RON LLOYD	RON LLOYD	Live Music Hot Whacks 9-1	DUFFY'S Friday at 4 \$1.75 Pitchers Free Popcorn Hot Whacks 9-2	Live Music Hot Whacks
11	12	13	14	15	16	17
Duffy's Pool Tourney 4:00 pm	PAC 10 Game of the Week 65c Pounders Duffy's Pool Tourney 8:30 pm		DUFFY'S Ladies Nite Ladies Drinks 1/2 Price 9-11	DUFFY'S Friday at 4 \$1.75 Pitchers Free Popcorn LIVE MUSIC STODDARD & COLE	DUFFY'S Friday at 4 \$1.75 Pitchers Free Popcorn LIVE MUSIC Hot Whacks 9-2	Live Music Hot Whacks 9-1
18	19	20	21	22	23	24
SUPER BOWL PARTY Duffy's Pool Tourney 4:00 pm	PAC 10 Game of the Week 65c Pounders Duffy's Pool Tourney 8:30 pm		DUFFY'S Ladies Nite Ladies Drinks 1/2 Price 9-11	Live Music Hot Whacks 9-2	Duffy's Friday at 4 \$1.75 Pitchers Free Popcorn Hot Whacks 9-2	Live Music Hot Whacks 9-2
25	26	27	28	29	30	31