

# City tax base clears while county's fails

Lane County voters overwhelmingly defeated a proposed \$5-million tax base increase, while Eugene residents narrowly favored a \$21.25-million tax base in primary voting on Tuesday.

Eugene voters also approved a charter amendment that will limit the amount the city can levy without voter approval to \$14 million in 1980-81, \$16.5 million in 1981-82 and \$19 million in 1982-83. In 1983 the city will be able to use the entire tax base.

The tax base and charter amendment, called the "Eugene Plan" by city officials, represented the city's separation of the "needs" from the "wants."

Taxpayers will receive tax breaks on both sections of the plan under Ballot Measure 5, which continues the 1979 Legislature's property tax relief plan indefinitely.

City Manager Charles Henry says even the 1980-81 limitation will be inadequate to completely fund city services because of inflation.

To further offset the lack of funding, the city has placed a measure to provide an additional \$1.4 million on the June 24 ballot which would both restore services to the present level and make a few additions.

By refusing the proposed \$5-million Lane County tax base increase, voters are testing the predictions of county officials, who foresee severe cutbacks of services that may considerably reduce the quality of life in the county.

Commissioner Otto t'Hooft says elderly and low-income people who rely on government services will be hurt most as a result of the defeat.

Among those services targeted for possible reduction are mental health, law enforcement and judicial services. Funding for the Glenwood Solid Waste Disposal Site and road-related services also were included in the proposal.

The tax base proposal would have meant a 100-percent increase in property taxes.

# Paulus takes race for state secretary

Norma Paulus swept the Republican field in Tuesday's primary election for the secretary of state nomination.

With 100 percent of the votes in, Paulus commanded 199,721 votes to easily outdistance opponent Harvey Forester.

Paulus has been secretary of state since 1976, supervising state elections, overseeing state audits and holding a seat on the state land board.

During Paulus' current term of office, she limited Oregon elections to six possible dates in a year. She said the previous system, under which local legislative districts could call elections whenever needed, was too costly and allowed local officials to manipulate turnouts.

Paulus also redesigned the state voters' pamphlet and hired Eugene "Ungreeting Card" cartoonist James Cloutier to illustrate it with humorous drawings that urge voters to the polls.

In addition, Paulus organized a cooperative get-out-the-vote effort with both merchants and media.

Paulus said she has one of the best environmental voting records in the state, with her efforts on the Land Board help-

ing that committee accumulate a \$100-million revenue surplus from state lands management.

She said she supports the preservation of submersible lands along Oregon rivers, even though the state must intercede as lessee for those residents who already have property rights on those lands.

Her opponent, Harvey Forester, 52, ran for secretary of state to "reform administrative policy and procedure and make bureaucracy conform to the Constitution as an honorable civil servant rather than as our oppressor and would-be master."

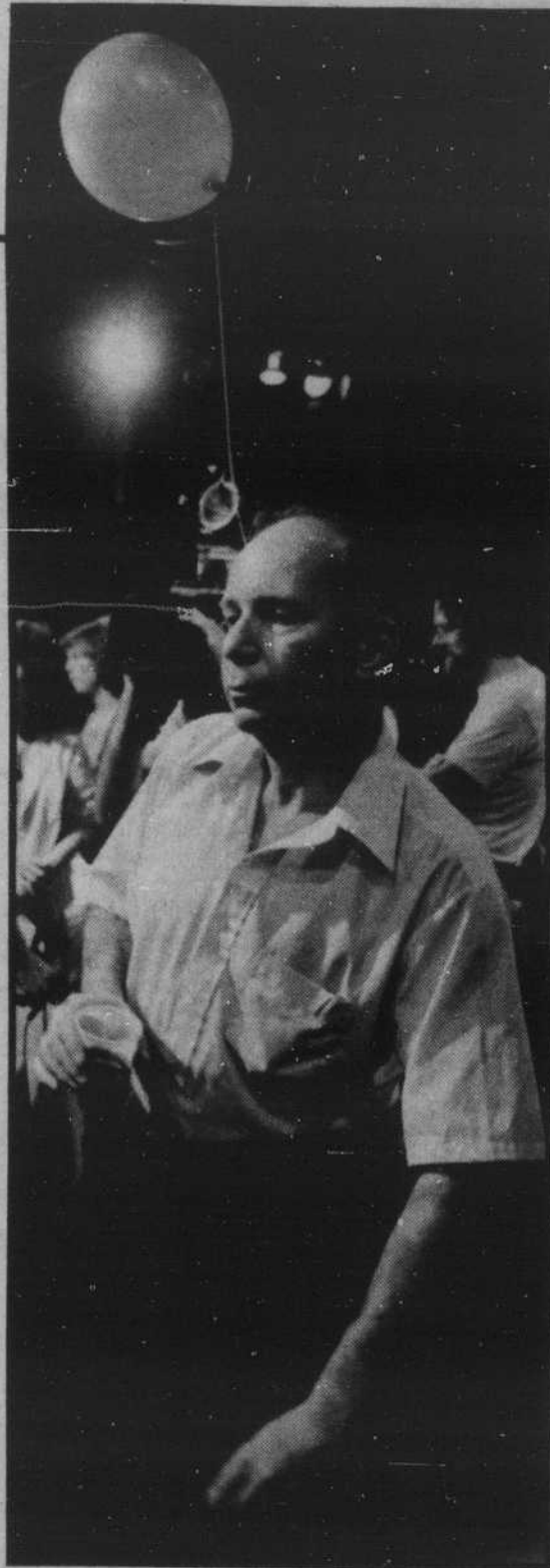
Forester said he wanted to "abolish the income tax, establish real money, (and) end the energy waste crisis."

In the Democratic field, John Powell won an uncontested race.

While serving six years in the state senate, Powell sponsored legislation that allowed for voter registration by mail.

Critical of low voter participation in Oregon, Powell said he will propose legislation allowing a direct mail-ballot system in Oregon.

Powell also favors legislation curbing the campaign spending by state candidates.



# PRIMARY PARTY TIME

Democratic and non-partisan candidates, along with supporters and spectators, crowded into the Oregon Repertory Theatre Tuesday night to stage their own gala production. Bright lights glared and TV cameras rolled to capture election night festivities.

A local band playing Irish folk music accompanied back-slapping and foot-stomping as beer and wine soothed the losers and loosened up the winners. The theater was the "hot spot" primary night as political party-goers and media people chased candidates and each other between traditional election night hangouts such as Perry's and the new Eugene Quality Inn.

Election photos by Keith Allen and Steve Dykes



Open 7 Days

## Kinko's

4¢ and less

### Copies

- Reductions
- Two-sided copies
- Binding

344-7894 764 E. 13th

## UNIVERSITY MANOR SOUTH

Apartments to sublet for Summer  
745 E. 15th Ave.

- Two Blocks from campus
- Courtyard & Deck
- One & two Bedroom Apts.
- Laundry & Off street Parking

For more information, call or stop by during the hours of 8 to 10 am or 6 to 9 pm; other times by appointment.

Manager 21A 484-0251

UNIVERSITY TRAVEL

Our Speciality

## "Scheduled Air Service at Charter Rates"

Please come see us at UNIVERSITY TRAVEL in the Smith Family Book Bldg. next to the Excelsior. Or call 683-5577.