

Local polling sites listed for primary

By RICH BRUER
Of the Emerald

The first phase of Oregon's election year comes to an end Tuesday when voters throughout the state go to their local polling places to determine primary election winners and losers.

Voters in recent years have been criticized for neglecting the primary elections, many of which draw a turnout of fewer than 25 percent of the eligible voters. However, voter turnout during presidential primaries elsewhere in the country has been stronger this year.

In Eugene, the primary election not only includes the presidential race, but also races for the U.S. Senate and House of Representatives; for a host of state legislative and administrative seats; for Lane County commissioners, sheriff and district attorney; for Eugene mayor and city council; and for the Eugene Water and Electric Board.

The ballot also will include a number of state measures and area tax base proposals.

Any candidate in the nonpartisan Lane County and Eugene elections who gains a majority of the vote will be technically the winner of the contest, although he or she will be listed as running uncontested on November's general election ballot.

The following is a list of campus-area polling places:

- Wesley Foundation Building, 1236 Kincaid St. (University Inn, Beta Theta Pi, Chi Psi, Kappa Sigma, Phi Kappa Psi, Sigma Nu, Sigma Phi Epsilon, Alpha Phi and Gamma Phi Beta residents will vote at the Wesley building).
- First Christian Church, 1166 Oak St.
- Central Presbyterian Church, 1475 Ferry St.
- South Eugene High School, 400 E. 19th Ave. (Parr Tower, Campbell Club and Alpha Omicron Pi residents vote at this location).
- Grace Lutheran Church, 710 E. 17th Ave. (Phi Delta Theta, Phi Gamma Delta, Pi Kappa Alpha, Sigma Alpha Epsilon, Alpha Chi Omega, Chi Omega,

Delta Gamma, Kappa Kappa Gamma, Pi Beta Phi and Sigma Kappa residents will vote at Grace Lutheran).

- EMU (University dorm residents, except University Inn, may vote in the EMU).
- Roosevelt Jr. High, 24th Avenue and Hilyard Street (Amazon housing residents will vote at Roosevelt).
- Edison Elementary School, 1328 E. 22nd Ave. (Philadelphia House, Alpha Tau Omega, Alpha Delta Pi, Delta Delta Delta and Kappa Alpha Theta residents will vote at Edison).
- Congregational Church, 1050 E. 23rd Ave. (Delta Tau Delta, Sigma Chi and Theta Chi residents vote here).

• Scottish Rite Temple, 13th Avenue and Chambers Street (Westmoreland housing residents vote at the temple).

For people unsure of where to vote, voter registration cards include poll locations. Voters can still register downtown at the Lane County Elections office, 175 W. 8th Ave., until 5 p.m. election day if you aren't already registered in the Eugene area. If registered elsewhere, you must re-register, because it's too late to send for an absentee ballot.

For other polling places, voting and ballot information, go to the Student University Affairs Board desk in the EMU lobby or phone Lane County Elections at 687-4234.

Relax!
Revitalize!

Experience
Polarity Therapy

A way to keep the mind clear, the body toned and relaxed. A self-discovery process, using diet, polarity yoga, body work and awareness to bring balance.



Please call Mary or
Kathleen
485-6095

Porter denounces Packwood's record

Money is at the root of the two main problems facing Congress, Charles Porter, Democratic candidate for U.S. Senate, told an audience of about 30 people Friday afternoon.

The economy and political corruption were the themes of Porter's speech in the EMU Courtyard.

"Many people are out of work or can't find work," Porter said. "We must make sure that we have low interest rates so these people can afford to buy homes. Congress has the responsibility to enact legislation to keep interest rates low."

As for corruption, Porter said the government has proved it's not trustworthy.

"We wouldn't be in this situation if Congress didn't have to answer to so many special interest groups," he said.

Porter is critical of incumbent Sen. Bob Packwood, a Republican, seeking his third term.

"Packwood is sort of the quintessence of the 1970s Congressman," Porter said. "He

knows how to get the money, but where did he get it and what price did he pay?"

Packwood raised a large portion of his campaign money using a letter signed by Gloria Steinem which said an anti-abortion movement had earmarked \$200,000 to defeat Packwood, Porter said, adding, "He got one-half of a million dollars from that letter."

The law "draws a line between ambiguity and making false statements in your campaign," Porter said. "That's what he (Packwood) did."

Porter has filed a suit in Multnomah County Circuit Court against Packwood.

A Eugene lawyer, Porter served two terms as a U.S. Representative from the 4th District in 1957-1960.

JOHN STEWART
new energy for
EWEB

Pd. John Stewart

Attention Student Nurses

Saint John's Hospital & Health Center, located in Santa Monica, California, is now accepting applications for:

Summer Employment
All Shifts Available

For further information please contact:



Jeannine Stadler, RN
Nurse Recruiter
(213) 829-8309
1328 22nd Street
Santa Monica, CA 90404

An Equal Opportunity Employer

emu Cultural Forum

presents Portland artist

TAD SAVINAR

Tad is the only Oregon artist chosen to install a permanent work in the forthcoming Eugene Performing Arts Center. His work is about large scale constructed environments. He will give a slide lecture about his work.



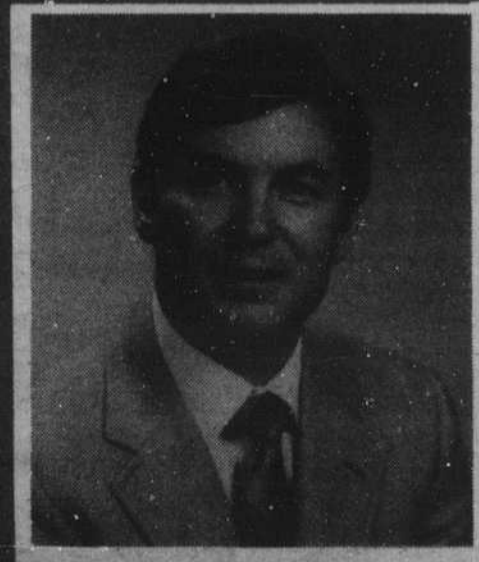
THURSDAY, MAY 22

8 PM Room 107

Lawrence Hall (School of Architecture and Allied Arts)

Admission Free

Pat Horton District Attorney



OPENNESS IN GOVERNMENT: Pat Horton is accessible to all citizens at all times. His attitudes of openness and candor are unexcelled by other public officials.

STRONG & FAIR: "...Horton has never abused his power by playing favorites for political or personal reasons. He is strong and fair; those are valuable attributes for this important office..."

(Register Guard — 5-30-80)

RAPE: Pat has pioneered the reform of Oregon rape laws, and continues to be the rape victim's advocate. He conceived of, and implemented the Lane Interagency Rape Team.

PROFESSIONALISM: "...Horton can point to a number of accomplishments in office. His advocacy of tougher prosecution of career criminals and his support of increased interagency police cooperation are two examples..."

(Springfield News — 5-10-80)

Paid for by J. PAT HORTON FOR DISTRICT ATTORNEY
David Nisaman, Treas. 52722 Govern Lane, Junction City, OR 97448 May, 1980