

et al

peanuts®



Gerontologists host trip

The Gerontology Association will be coordinating travel to the Oregon Gerontological Association's first conference, "Choosing the Issues and Pointing the Way," to be held Oct. 21-22, at the Inn of the Seventh Mountain, Bend, Ore. The ASUO-sponsored student organization has arranged for lodging and travel accommodations.

The Oregon Gerontological Association recently formed to provide leadership in profes-

sional service, advocacy and training for gerontologists who work with the elderly.

For the first conference in Bend, the OGA will offer a diverse program which includes 11 workshops, including issues for Oregon Seniors, Professionals, and Service Providers; the Good and Bad of Drugs for Elderly Oregonians; Living with, Working with Depression; Health Care As We See It; In Home, Institutional Issues; and

many more.

Dr. Robert Zeigen, administrator, State Office of Elderly Affairs, will be a featured speaker at the conference. The Gerontology Association invited all students who wish to attend the conference to inquire about necessary travel details by calling Michael Ego, director, at 686-3749 or by stopping at Suite 3, EMU. For additional information call Linda Meier of the Oregon Center for Gerontology at 686-4207.

City offers bicycle trips

The Eugene Parks and Recreation Department is offering bicycle tours for beginning and intermediate cyclists this fall.

Eugene Sampler Rides journey to various places in the Eugene metropolitan area each Tuesday through Nov. 2. The rides are leisurely and last three to four hours including a lunch stop at a local restaurant. The cost is \$1 excluding lunch. Tours leave the east Skinner's Butte parking lot (near Campbell Senior Center) at 10:00 a.m.

All-day bicycle tours are scheduled for Saturday Oct. 13 and Oct. 27. Upcoming tours include trips to Oxbow Burn,

Suislaw Falls and Buena Vista Ferry. Tours leave the River House, 301 N. Adams, at 8:30 a.m. The cost is \$1.50.

Sunday rides offer a chance to explore the countryside outside of Eugene. Rides average 35 miles or less and last most of an afternoon. Sunday rides this month include a trip to Detering's Orchard, Oct. 28. Cost of the tours is \$1. The group leaves River House at 1:00 p.m.

An experienced leader accompanies all bicycle rides and tours. Helmets are also provided. No registration is necessary. For further information, call 687-5329.

briefs

MEETINGS

Students for a Nuclear-Free Future will hold an organizational meeting this afternoon at 5 p.m. to discuss projects for the coming year. The room number will be posted outside the Survival Center, in the EMU basement. For further information, call 686-4356 or come to the SNUFF office in the Survival Center.

The University YWCA is kicking off its Women/Speak Brownbag Lunch Series today with "Her Soul Lives On: A Multimedia Presentation on Violence Against Women," with slides, music, readings and drama. Women/Speak is open to the public and free every Wednesday from 12:30-1:30 p.m. in the EMU from Oct. 10 until Nov. 14. The room number will be posted.

"Gay Rap," an informal discussion group for gay women and men discusses the joys and problems of gay life. It meets at 7:30 p.m. every Wednesday. Tonight's topic: "Dealing with Family and Friends." For more information call 686-3360.

Parents who want to learn to encourage their children to be more responsible and self-confident can participate in a discussion group Wednesdays, 9:30-11:30 a.m., Oct. 10 through Dec. 6, at the Central Presbyterian Church, located at 1475 Ferry St.

In the group, parents will consider ways to understand children's misbehavior, improve communication, offer encouragement, set reasonable limits and develop family cooperation. For further information, call the Community Center for Family Counseling, 686-5501.

The Oregon Student Public Interest Research Group will hold local board elections and have a general meeting at 4 p.m. today in the EMU, room to be posted. For more information, call 686-4073.

Are you interested in Social Services? Come to the Social Work Interest Group meeting tonight at 5:15 p.m. at the EMU. Room number will be posted.

MISCELLANEOUS

(Ed. Note: The following information was inadvertently left out of a story appearing on Page 6 in Monday's issue of the Emerald.) Applications to the ASUO Pre-medical Preceptorship Program are limited to students who have completed at least one term of organic chemistry. Additionally, evidence of successful academic work must be presented. Applications are available in the Pre-health Science Center, Room 164 Oregon Hall. The first rotation with a Physician will start at the end of October and applicants will be notified of their acceptance into the program within one week of receipt of an application.

Applications are being taken for physical education proficiency exams in the main office, 161 Gerlinger Annex. The deadline is Friday, Oct. 12 at 5 p.m.

Male voices are needed for "Celebrate," a music group for leading Christian worship sponsored by Campus Interfaith Ministry. Call 344-4219 for more information. Rehearsals are at 7:30 p.m. on Wednesdays at the Wesley Center.

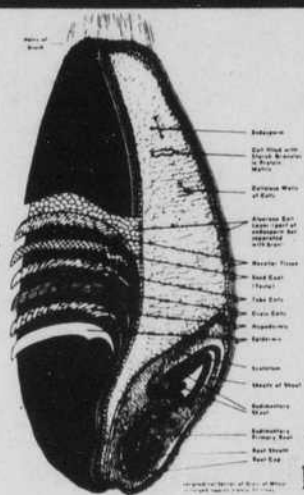
SCHOLARSHIPS

Deadlines for the following grants and fellowships are approaching:

Fellowships for Canadian citizens or those with landed immigrants status. Deadlines: Vary but begin about Oct. 15. Write Social Sciences and Humanities Research Council of Canada, 255 Albert St., Box 1610, Ottawa, Ontario, Canada K1P 6G4.

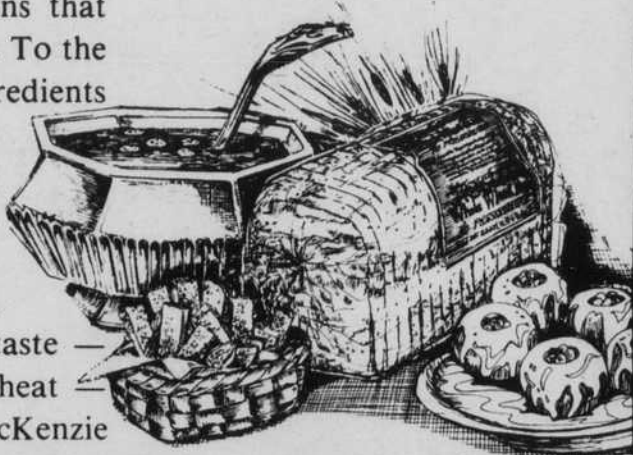
Funding for student research in the areas of curriculum development, educational programming, research dissemination, etc., in the area of handicapped children and adults. Deadlines: Oct. 12 and March 17, 1980. Write Handicapped Student Research, Research Projects Branch, Bureau of Education for the Handicapped, U.S. Office of Education, 400 Maryland Ave. SW., Washington, D.C. 20202.

For more information on the above grants and fellowships call 686-5132.



At the heart of every loaf of Stone Ground whole wheat bread . . . a kernel of nutritious wheat

There is a storehouse of nutrients and natural goodness in the stone-ground whole wheat flour we use at McKenzie Farms. The flour is carefully milled — retaining all of the bran, fiber and vitamins that are lost in clear white flour. To the flour we add natural ingredients like honey, molasses, and butter. The result is a bread that's full of robust whole wheat flavor—with NO PRESERVATIVES! For a high fiber, nutrition, and taste — try Stoneground Whole Wheat — the natural bread from McKenzie Farms.



McKenzie Farms Bakery . . . A Natural

oregon daily emerald

The Oregon Daily Emerald is published Monday through Friday, except during exam week and vacations, by the Oregon Daily Emerald Publishing Co. at the University of Oregon, Eugene, Oregon, 97403.

The Oregon Daily Emerald operates independently of the University with offices on the third floor of the Erb Memorial Union and is a member of the Associated Press.

Emerald subscriptions are \$7.00 per term and \$20 per year.

News and Editorial 686-5511
Display Advertising and Business 686-3712
Classified Advertising 686-4343
Production 686-4381

Editor Kathleen Monje
Managing Editor Sally Oljar
News Editor Dagmar Obereignor
Assistant News Editor Stephen Myers
Photo Editor Keith Allen
Assistant Photo Editor Jimmi Harris
Graphics Editor Tom Ettei
Editorial Page Editor Paul Yarnold
Sports Editor John Healy

Associate Sports Editor
Entertainment Editor
Wire Editor
Senior Copy Editor

Associate Editors
ASUO
Community
Environment
Features
State Systems and Student Services
Night Editor

General Staff
Librarian
Classified Advertising
Production Manager
Sales Manager
General Manager
Advertising Manager
Ad Services
Controller

Steve Spatz
William Kogut
Tamara Swenson
Yvonne Beasley

Mark Matassa
Lorraine Nelson
Glenn Boettcher
John Crowley
Sally Hodgkinson
Tamara Swenson

Jim Wechsler
Karen Hartman
Sandra McMullen
Caroline Connolly
Greg Howard
Dave Lindstedt
Jerril Nilson
Jean Ownbey

SALE
on downhill
equipment
and clothing
Hurry for great values!

DOWNHILL
13th & Lawrence St. 683-1300

CROSS COUNTRY
Corner 11th & Mill • 683-1100

Hours: 10 a.m. to 6 p.m. daily

Berg's Ski Shops