

Chemists research drug

Two University chemists are shooting blue and green beams from an argon gas laser at a platinum drug used in chemotherapy to study the drug and try to improve its effects on cancer patients.

Chemistry professor Warner Peticolas, visiting professor Dennis Strommen and several graduate students are working with the help of a \$370,570 five-year grant Peticolas received from the National Institute of General Medical Sciences.

According to Peticolas, very little is known about the mechanics of this cancer drug containing metal platinum.

To begin their experiments, the researchers first inject the genetic material DNA into the drug.

The researchers will send laser beams through the substances to observe the changing vibrations, which are indicated by changes in color of the laser beams.

There are several problems with the platinum chemotherapy drug that the researchers hope to change. For example, the drug only extends the life of a terminal cancer patient from a few months to a few years and the drug has some bad side effects.

YMCA needs camp aides

The Eugene Family YMCA is looking for summer camp leaders.

A minimum age of 15 years is required; positions will run from June 11 to August 31. Weekly positions are also available.

Camps are located in Lane County and all positions are volunteer. Compensation is given with training, camp experience, some meals and transportation at camp.

For more information, call the YMCA at 686-9622.

Historian will lecture

Cultural historian Elizabeth Eisenstein is this year's speaker for the University history department's annual Quirinus Breen Memorial Lecture.

The University of Michigan history professor will deliver the lecture tonight at 8 in the EMU, room to be posted.

The topic of Eisenstein's lecture will be the effects of printing on society, especially the shift from script to printing and Protestantism, using material from her most recent book.

Draft is focus of YWCA project

The YWCA has established a draft and registration information project. In addition to a calendar of events, a bulletin board, and a literature table, there is a resource person (Catherine Johnson) available from 3 p.m. to 5 p.m. Mondays, Wednesdays and Fridays to answer questions.

Call 686-4439 or come by the YWCA, located in the basement of the University Student Health Center, for more information.

Peer advising service offered

Sociology majors who have problems planning schedules, meeting University and department requirements, and finding campus resources can now find help through peer advisers.

The Sociology Peer Advising service also offers information on graduate and professional schools and career options for sociology majors.

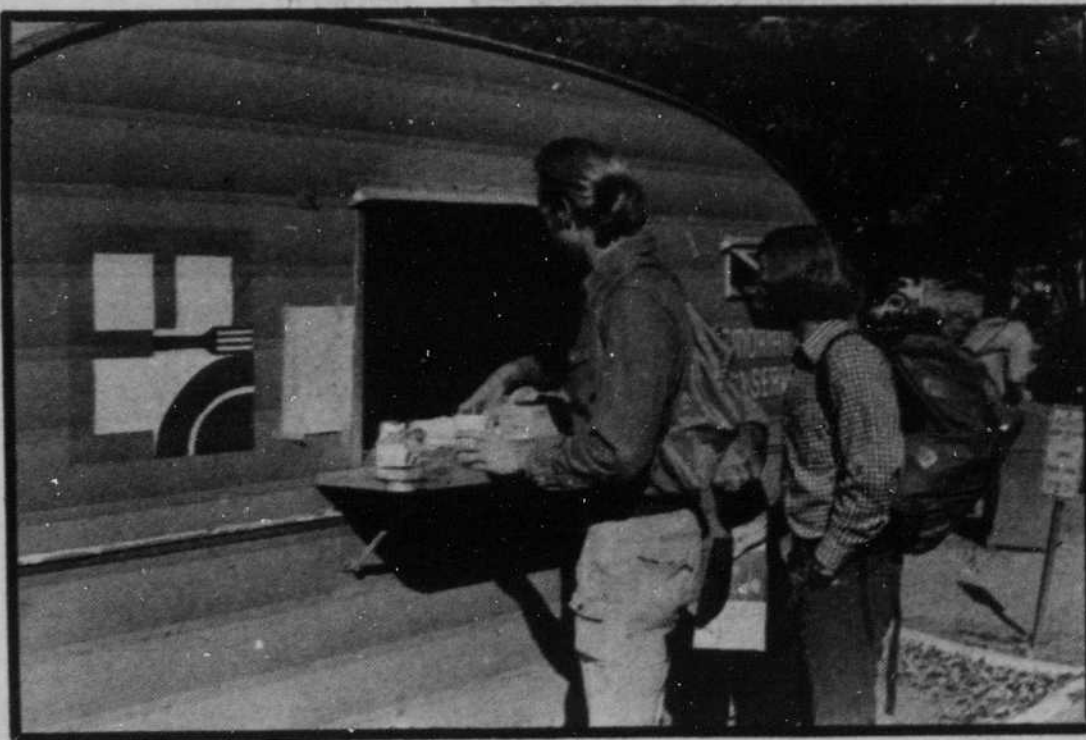
To use the service call 686-5012 or stop by 639 PLC Mondays noon to 4 p.m., Wednesdays 1:30 p.m. to 3:30 p.m. or Fridays from noon to 3 p.m.

peanuts®



emu Food Service

GRAB LUNCH ON THE RUN



EMU Food Service Trailer

9:30-2:00 Library Turnout

- | | | |
|------------|--------|--------------------------|
| sandwiches | donuts | juice |
| yogurt | fruit | milk |
| soda | candy | bagels with cream cheese |

briefs

MEETINGS

The Native American Student Union will meet tonight at 6 in the Long House, 1606 Columbia St.

There will be a meeting of the Outreach task force of the Coalition Opposing Registration and the Draft at 6:30 p.m. tonight in the Koinonia Center, 1414 Kincaid St.

LECTURES

Lazell Johnson, regional administrator of the Women's Bureau, will speak tonight at 7 in 337 Gilbert.

Mohammed Abdulatif, graduate student in linguistics, will speak on "Emphatics in Arabic" today at 3:30 p.m. in 159 Straub.

WORKSHOP

Delegates to the recent Model United Nations of the Far West Conference will conduct a workshop this evening at 7 in the EMU Forum.

INTERVIEWS

Signup sheets will be posted in 246 Susan Campbell Hall at 8:15 a.m. Wednesday for the following interviews:

- May 21 - Columbia Hardware & Moulding Company (business and forestry background preferred, sales positions).
- May 22 - Investment Advisory Services Corporation (real estate or finance majors).
- May 23 - Estacada Schools (education majors for instrumental music, English-journalism/yearbook).
- May 25 - Portland Public School District (group meeting at EMU, 10-11 a.m.).
- May 30 - Nome, Alaska School District (education majors, specialties not yet specified).

oregon daily emerald

The Oregon Daily Emerald is published Monday through Friday except during exam weeks and vacations, by the Oregon Daily Emerald Publishing Co., Inc., at the University of Oregon, Eugene, Oregon 97403.

The Oregon Daily Emerald operates independently of the University with offices on the third floor of the Erb Memorial Union and is a member of the Associated Press.

Emerald subscriptions are \$7 per term and \$20 per year.

News and Editorial 686-5511
 Display Advertising and Business 686-3712
 Classified Advertising 686-4343
 Production 686-4381
 Editor Tom Wolfe
 Managing Editor Melody Ward
 News Editor Marv Fjordbeck
 Photo Editor Patrick Sullivan
 Graphics Editor Tom Ettel
 Editorial Page Editor Glen Gibbons
 Sports Editor Ken Sands

Associate Sports Editor
 Assistant Sports Editor
 Entertainment
 Wire Editor

Associate Editors
 ASUO
 Community Departments and Schools
 Environment
 Features
 Local Politics
 State Systems and Student Services
 Librarian
 Night Editor
 Asst. News Editor
 Production Manager
 Advertising Manager
 Sales Manager
 Controller

Sally Hodgkinson
 Lorraine Nelson
 Glenn Boettcher
 Catherine Siegner
 Jock Hatfield
 Kevin Harden
 Keli Osborn
 Jim Wechsler
 Robin Dorothy
 Yvonne Beasley
 Sanora McMullen
 Carl Bryant
 Tracy Simpson
 Jean Ownbey

Jim Allen
 Tamara Swenson
 Bill Kogut
 Kathleen Monje

CHINA BLUE RESTAURANT

KUY POA SHRIMP

\$5.50

Shrimp sauteed with black mushrooms, vegetables, cashewnuts and in special spices



China Blue

879 E. 13th Ave.
 343-2832

Hours
 Mon thru Fri 7am-10pm
 Sat 5-11pm
 Sun 5-10pm