

THE 1¢ OFFSET PRINTING SPECIAL

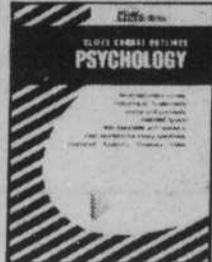
for 500 or more of an original printed on white 20lb. or 100% recycled

Campus Copy 762 East 13th

If you liked Cliffs Notes, you'll love these other study guides!



Catch up fast with Cliffs Keynote Reviews
Available in over 24 subject areas. Unique programmed format pinpoints your weak areas, leads you right to the facts without wasting time. Includes self-tests and a Dictionary-Index of Terms.



Keep up with Cliffs Course Outlines
They're keyed to major texts and include suggested objective and essay questions. Great for pre-exam review.

Here... Tradebook Dept.
UO BOOKSTORE
Erb Memorial Union
Eugene, OR 97403

Recall study finds Archie ignored students

By KEVIN HARDEN
Of the Emerald

University students who voted for Lane County Commissioner Archie Weinstein two years ago may have gotten less than they hoped for, says a member of the Citizens Cooperating to Recall Weinstein.

David Straton, a University graduate working with the CCRW, says Weinstein used new student voters to get into office. Once he was elected, Weinstein turned his back on the students and has since complained because many of them are involved in the recall effort, Straton says.

Straton and the CCRW began looking into Weinstein's record of service to the county two weeks ago after the recall measure was placed on Tuesday's ballot.

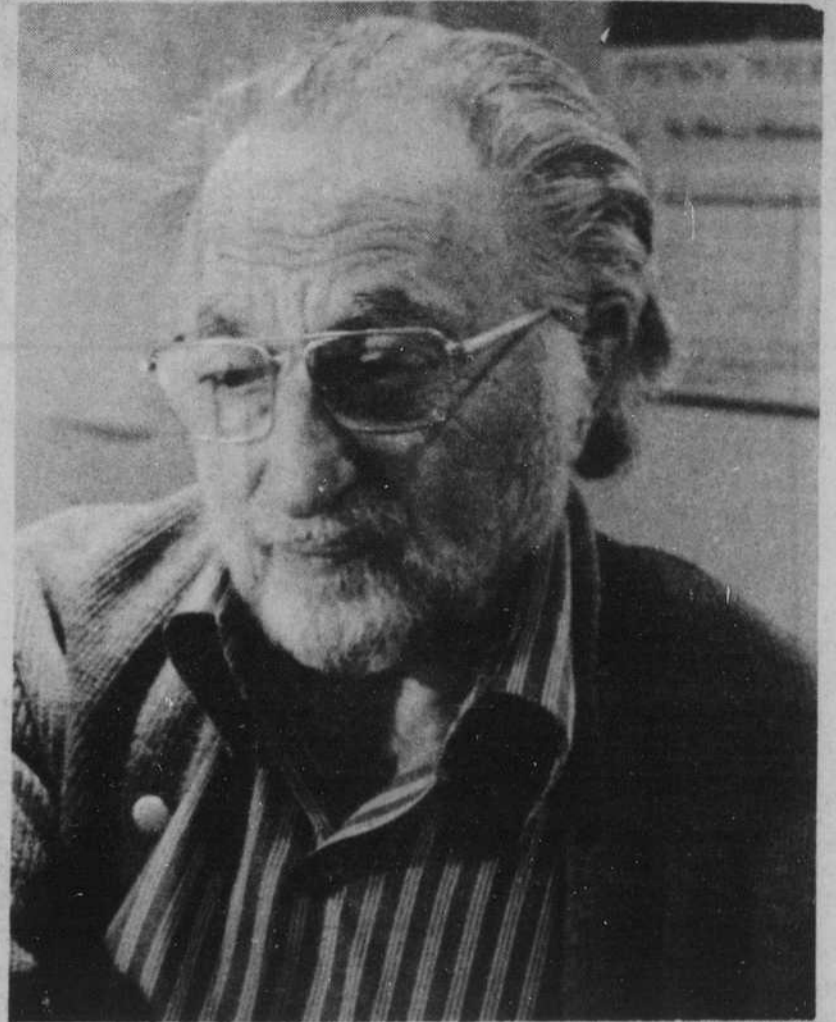
During the research, Straton discovered that Weinstein had not represented students' views as much as he promised during the 1976 campaign.

In his campaign, Weinstein met several times with students on campus and offered many "open-ended statements" that encouraged the student vote, Straton says.

Although Weinstein supported recycling programs and alternative energy projects two years ago, he has since changed his stand, Straton explains.

"He kind of played right up to the students without hurting his conservative support," he says. "Weinstein came to campus sounding like a progressive, but he chucked it all after the election."

Much of Weinstein's student



Commissioner Archie Weinstein

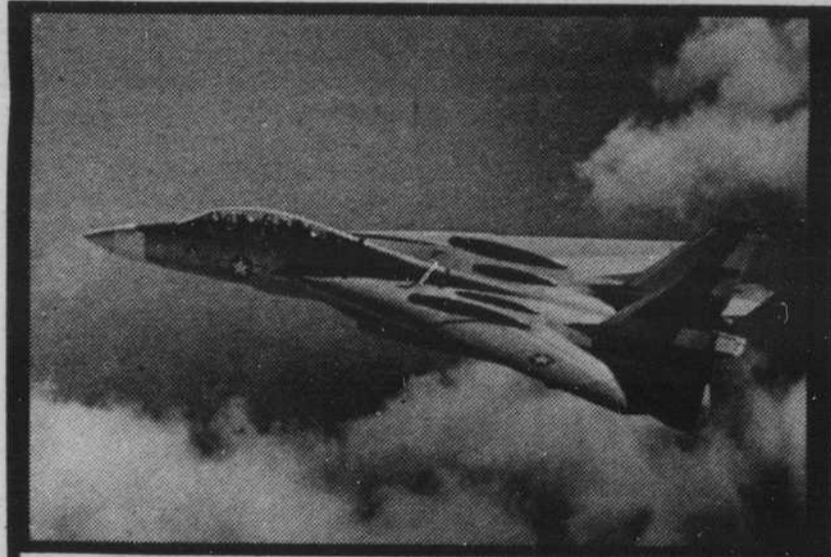
Emerald photo

support during that election came from new students who were voting for the first time, Straton says. Rumors about questionable political practices of Weinstein's Republican opponent also aided his election.

Most of the University student-dominated precincts voted heavily for Weinstein. Students who knew about Weinstein's past didn't vote

at all, Straton says.

Until the recall effort began gathering student support, Weinstein ignored students, Straton says. Since then, Weinstein, who could not be reached for comment, has argued that students should not be allowed to vote on the recall measure because they are not permanent residents of Lane County.



SOPHOMORES!!! JUNIORS!!!

Train for the Navy's Sky now!

How would you like to be guaranteed flight training upon graduation...but have no obligation to the Navy until you finish the initial phase of training?

By being accepted into the Navy's AVROC (Aviation Reserve Officer Candidate) program you will be at the controls. When you graduate, if you still want to fly, continue the program...if you've found something better, drop from the program. It's risk-free. Honest.

See your Navy Officer Representative on campus:

Nov 6, 7, and 8
ERB Memorial Union
or
Placement Office (by appt)

Where do your legislators stand?

The scores below are based on the interest group vote analyses, re-computed in some cases for ease of comparison and clarity. Each score indicates the percentage of floor votes in agreement with the group's position.

We suggest you first read down each column, comparing the scores of each legislator with the median score. Then read across the columns, comparing his or her scores with all the median scores.

C.D.

LEGISLATOR	OEC	OCL	Seniors	ACLU	Labor	C.Cause
House Median Score (%)	75	70	92	63	72	37.5
Rep. Mary Burrows R-Eugene, Dist. 41	100	85	100	100	72	100
Rep. Nancie Fadeley D-Eugene, Dist. 42	100	90	100	92	78	100
Rep. Dave Frohnmayer R-Eugene, Dist. 40	100	85	100	46	72	75
Rep. Grattan Kerans D-Eugene, Dist. 39	100	100	94	92	100	100
Rep. Ted Kulongoski* D-Junction City, 43	95	80	100	58	67	100
Rep. Bill Rogers R-Vida, Dist. 44	40	20	88	18	44	25
Senate Median Score (%)	81	76	86	—	89	75
Sen. Edw. Fadeley D-Eugene, Dist. 21	90	85	93	—	78	75
Sen. Geo. Wingard, R-Eugene, Dist. 20	90	75	94	—	83	100

*House record. Kulongoski now is seeking the Dist. 22 Senate seat to which he was appointed following Sen. Browne's resignation.

†Not seeking re-election.

‡Not up for re-election this year.

Sponsored by ASUO State Affairs
Courtesy Willamette Valley Observer