

Legislative candidates favor OSL package

All five legislative candidates who responded to an Oregon Student Lobby questionnaire favor public release of faculty evaluations, a merit rating system for determining auto insurance premiums and creating a student seat on the Oregon Educational Coordinating Commission.

The OSL plans to lobby for each

of the supported measures.

Seventeen candidates were polled and no replies were received from 12 by the OSL's Oct. 22 meeting.

The OSL designed the questionnaire to inform students about issues and candidates' positions and "to determine attitudes of legislators the OSL may have to

deal with during lobbying efforts," says Dan Garner, executive coordinator of the OSL.

House District 41 candidates Tom Fagan, D-Eugene and Mary Burrows, R-Eugene, and Senate candidates Edward Fadeley of District 21, James Pack, running for District 22 and George Wingard of District 20 responded to the

survey, which polled candidates in House Districts 39-44 and Senate Districts 22-24.

Garner says he is pleased to see support for a student seat on the Oregon Educational Coordinating Commission, a council he says is "sorely lacking in students' concerns."

All the respondents expressed reservation about linking increased tuition to ability to pay or to the consumer price index.

With the favorable response

from candidates concerning the release of course evaluations, the OSL has decided to again introduce a bill in the Legislature requiring the evaluations to be released.

A unanimous response from the candidates favoring use of a merit rating system for determining auto insurance payments also supports OSL efforts to use driving records rather than demographics to determine driver insurance premiums.

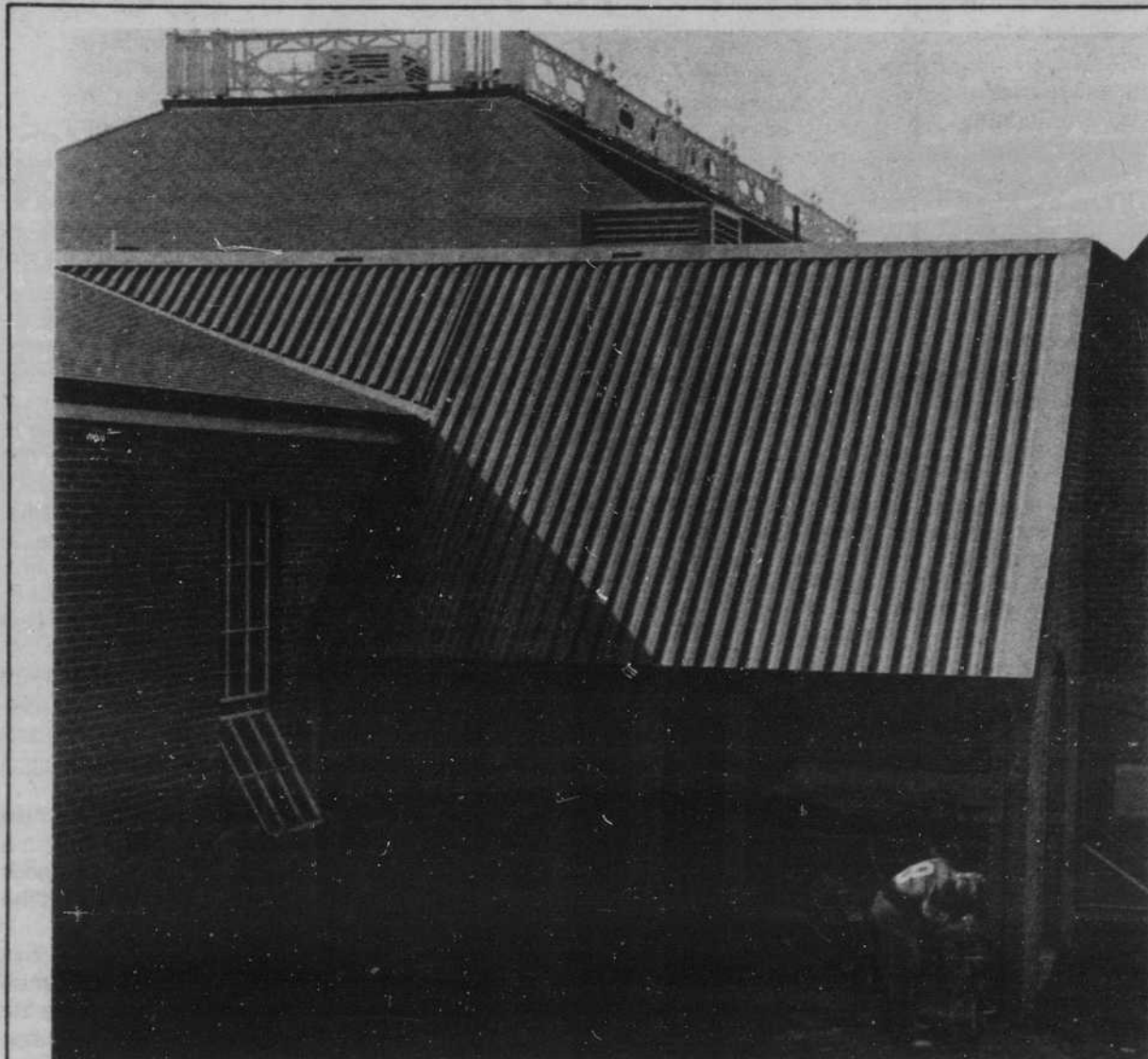


Photo by Dennis Hickok

A \$2 million renovation of the University music school has helped turn that program from one of the worst in the state to one of the best, says Morette Rider, music school dean.

Rider made the remark before several hundred people Saturday at Beall Hall during a dedication ceremony for the school's new North Hall.

University Pres. William Boyd and Roy Lieuellen, chancellor of the Oregon State System of Higher Education, spoke at the ceremony emphasizing that teachers, not the building, will determine the quality of music education at the University.

Dean Rider says the project presents students and faculty with a new challenge to live up to the full potential of the school's new facilities.

The North Hall provides 15,000 square feet of space and houses 28 practice rooms and 11 faculty studios.

Faculty dedicates Beall Hall

Hannum Motors, Inc.

**SERVICE DEPARTMENT
2060 CENTENNIAL BLVD.
PHONE 686-2211**

STUDENTS AND FACULTY

Now you can get a 10% discount on all service and repairs on any Datsun, British Leyland, or Peugeot automobile with your U of O I.D. card

- * FACTORY-TRAIN SERVICE TECHNICIANS
- * COMPETITIVE PRICING
- * ALL REPAIRS GUARANTEED 90 DAYS OR 4,000 MILES WHICHEVER OCCURS FIRST
- * FACTORY PARTS

HANNUM DATSUN R & H AUTO IMPORTS

2060 CENTENNIAL BLVD.
686-2211

OPEN PEOPLE HOURS 7:30 a.m.-6:30 p.m. Monday-Friday
"OUR REPUTATION RIDES IN EVERY CAR WE SERVICE"

offer expires 12-31-78

HAIR TODAY

Downstairs in the EMU
close to the Recreation Center
687-1347

40 E. 10th Ave.
Downtown
484-1200

561 E. 13th Ave.
Across from Max's
485-4422

NATURAL HAIR DESIGNS FOR WOMEN & MEN!

\$6.50

Dry cut designed for your hair and you, for those on a tight schedule.

\$9.00

Wet style designed for you and your hair for easy care and the air-waved style. A completed style to go anywhere.

\$12.00

Includes shampoo, moisturizing conditioner, blow dry and a hair cut designed for you. A completed easy care style.

Remember: we carry the finest of professional hair care products for you to use.

Your input is still in Demand!

Apply for a Student/Faculty Committee and express your views.

Advising Committee

2 openings

Assembly and University Lectures

1 opening

Campus Planning

2 openings

Ethnic Studies

5 openings

Failing Distinguished Lecture Series

1 opening

Festival of Arts

2 1 yr. openings

3 2 yr. openings

Minority Education Council

4 openings

New Student Orientation

1 graduate opening

Safety Advisory

2 openings

Scholarships

1 opening

Scholastic Deficiency

2 openings

Student Conduct

3 openings

Traffic Appeals Board

1 opening

University Appeals Board

3 openings

Women's Studies Council

2 openings

Information & Applications
are in Suite 4, EMU