

Stove rules may burn holes in pockets

By KEVIN HARDEN
Of the Emerald

Industry group says inspector unfair

A fight by Eugene-Springfield wood stove manufacturers to establish a uniformly enforced set of stove regulations may be hurting many of those manufacturers financially, seven members of the wood stove industry said Tuesday.

Those members, Mike Duval of J & J Enterprises, Ken Hussey

and Doug Johnsan of Mannan Building Supplies, Thomas Lichty of the Oregon Woodstove Company, John Orlando of Oregon Steel Fabricating and Fred Wingham, Radke Stove distributing of McCormack Consulting Engineers and Fred Wingham, Radke Stove distributor, made public information on a year-long

fight between themselves and the city's mechanical inspection division of the Public Works Department at a news conference Tuesday morning.

Because of the lack of enforced regulation, nearly eight of every 10 wood stoves installed in area homes are installed without the proper permits, the group said.

Claiming the wood stove industry has been subjected to "unreasonable and capricious action," by the inspection division, the groups said several inconsistencies in inspection procedures and wood stove installation permits have caused them to lose business and caused some residents to install wood stoves without permits.

The fight began over a year ago after several stove manufacturers were told they would have to conform to new standards set by the city's mechanical inspection department. While those standards have been applied to most wood stoves made in the Eugene-Springfield area, not all stoves have been tested or approved.

According to McCormack, the group's spokesman, several untested and unapproved stoves have been sold without any problem with the inspection division. Other stoves, mainly those made by Frontier Stoves and Pioneer stoves, have been tested and have run into trouble with the inspection division.

The group submitted complaints to the Public Works Department and the city council last October concerning the inspection and installation permit procedures, McCormack said. Most of those complaints focused on one inspector who had been favoring certain models of wood stoves over others in his permit inspections, the group said.

That employee, Lyle Lamont, a mechanical inspector for the Public Works Department, has made misleading statements to several potential customers about insurance coverage of homes with wood stoves, the group said.

Citing several documented incidents of irregularities, the group said Lamont was attempting to "force local businessmen out of business by threats and malicious

statements."

Several of those statements include documentation of a refusal by Lamont to inspect a wood stove installed by the Oregon Woodstove Company and a \$50 payment from Oregon Steel Fabricating to Lamont for services he performed for that company during regular city business hours.

As a result of last October's meeting, the Public Works Department suspended Lamont for one week. Since that time, McCormack said, "his inconsistency (in inspection procedures) has increased."

According to the Public Works Department, Lamont is on a two-week vacation and cannot be reached for comment.

Some of those inconsistencies have caused most of the group to lose money on sales and manufacturing costs, McCormack said.

"We don't know from day to day what equipment we will have approved and what we won't," Ken Hussey said. "We never know if the stove (they sell) will be approved or not approved."

Although most cities in the Willamette Valley follow the Uniform Mechanical Code for wood stove inspection and permits, the Eugene City Council has looked to Lamont as an expert in that field, Duval said, which has hurt those manufactureres he may not like.

Despite the complaints about Lamont and the permit procedures, the group is very much concerned with public safety.

"We all agree that all stoves should be tested and approved for licensing in the area," Duval said. "But this (the documentation of Lamont's inconsistency) shows that it doesn't matter whether your stove is approved or not."

The charges against Lamont are under investigation by the city manager's office and the Police Department, according to Keith Martin, assistant city manager.

John Ashbery, recipient of several national prizes and awards for his poetry, read before a small but dedicated audience Tuesday night in 150 Geology. The wide scope of his selections dealt with everything from the pseudo-autobiographical to word fantasies.

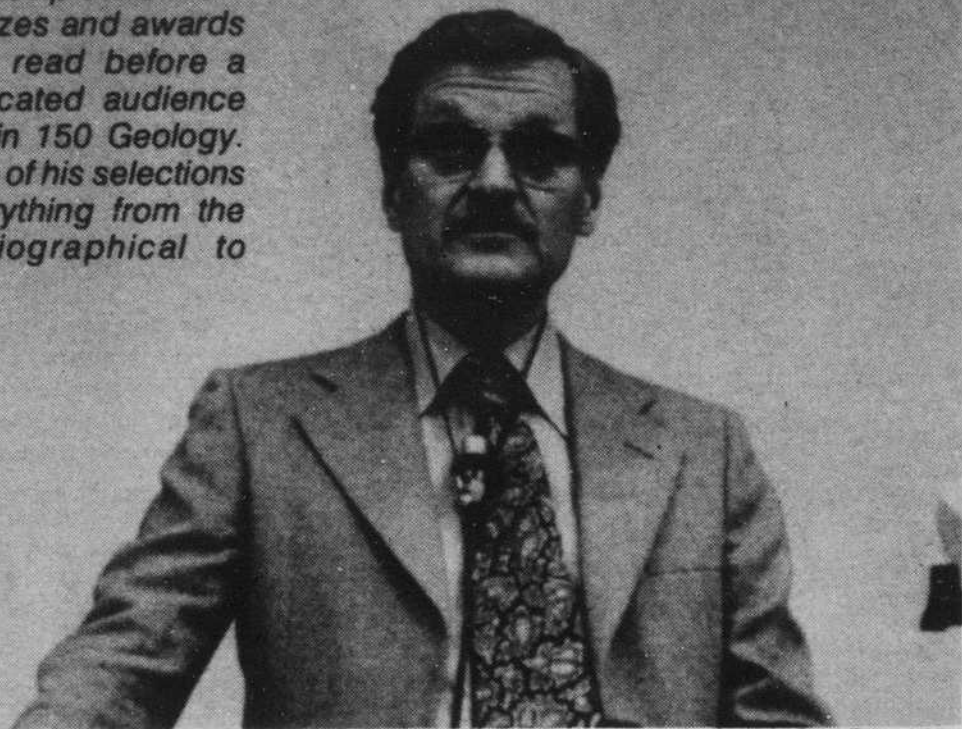


Photo by F.H.A.T. Axmacher

FREE CHOCOLATE FONDUE

Large Plate of bananas, apples, peaches, pineapple, pound cake, & chopped nuts served with creamy imported Swiss Chocolate!

Reg. \$3.55 - FREE with 4 dinners purchased together.

Offered Apr. 17 - 22 Only.



park place

756 W. Park (In Smeede Hotel) 343-9587

Serving: 6-9 pm, Mon. - Thur.
6-10 pm, Fri. & Sat.

Trip to Austria good for credit

A summer cultural encounter in Salzburg, Austria, will be presented by the University of Portland's Salzburg Extension for up to seven credit-hours from July 3-28.

Courses in art history, Central European literature, music history and performance and cultural field trips in Austria and Germany are offered for both upper division and graduate credits. Emphasis will be on the cultural history of Central Europe.

For additional information, contact Joseph Haley, Director of the Office of International Programs, University of Portland, Portland, Oregon 97203.

Foreign students wanted

This week foreign students will have a special opportunity to seek jobs in their home countries. Citibank of New York is sending a representative Friday to interview seniors and graduate students in business, economics and en-

gineering.

Citibank is a global corporation seeking foreign students studying from Asia, Africa, Europe, Latin America and in particular, the Middle East.

Selected students would first become management trainees, and then specialize in the particular demands of their country's economy.

Tom Mills, International Student Services director, stresses this kind of opportunity for job placement is unique.

Eligible students should sign up at the Office of Career Planning and Placement, 246 Susan Campbell Hall. Further questions can be directed to the Office of International Student Services in Room 172 Oregon Hall.

The Annual Undergraduate Art Show

April 24 - 28
12-4 pm 167 EMU

The Following Guidelines Should Be Followed When Submitting A Work:

1. Each artist may submit a total of two works. They may be drawings, photographs, paintings or self-standing sculpture. All pieces must be properly mounted, and 2-dimensional works no larger than 4' x 4'.
2. Each entry must have an entry card and jury card filled out; the entry card must be returned to the Forum by April 21 (Friday). Jury cards should be attached to the works. Cards are available in Suite 2, EMU.
3. Pieces must be brought to Room 167 EMU between 3 and 4 pm Saturday, April 22. The works will be juried and rejected works should be picked up between 5 & 6 pm Sunday.
4. The pieces may be picked up after the show on Friday evening, April 28, between 6:30 & 7:30 pm.

Complete Ice Cream Party
Items for All Occasions



Milk Shakes
Special Sundaes
Cones

1365 Villard St. 495 Coburg Rd.
484-1031 342-3462

EMU Breezeway

31 Delicious Flavors

THE UNIVERSITY OF OREGON COMPUTING CENTER
PRESENTS A
COMPUTER TERMINAL FAIRE

WED. APRIL 19TH 10:00 AM TO 7:00 PM
ERB MEMORIAL UNION U OF O CAMPUS

OPEN TO THE PUBLIC
CALL 686-4416 FOR INFORMATION