

Lane plan re-divides boundaries

By GREG HOWARD
Of the Emerald

The Board of Commissioners has adopted a boundaries plan which divides Lane County into five districts, each to be represented on an expanded board beginning in January, 1979.

Three new commissioners will be elected next year from Springfield, East Lane and West Lane districts. One present seat will be vacated by Commissioner Bob Wood who plans to run for governor when his term ends in 1978.

Commissioners Archie Weinstein and Jerry Rust will represent the North (which includes the University) and South Eugene districts, respectively.

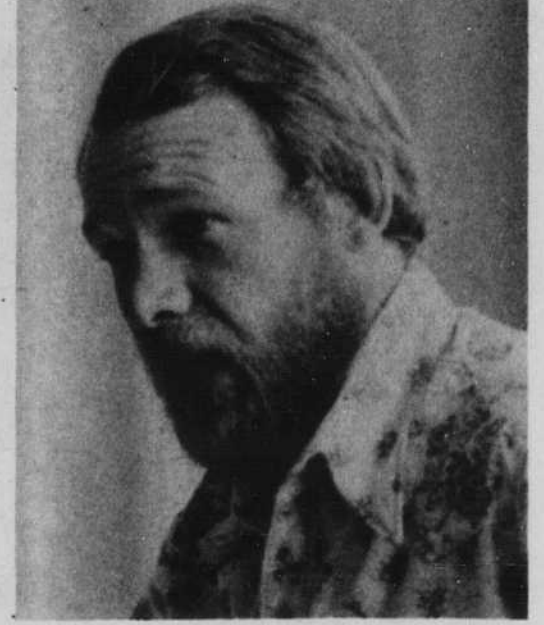
Rust, recalling that he was elected to an at-large position, said he plans to serve in that capacity until his term expires in 1980. "I don't know if I wish to run for a single-



Archie Weinstein



Bob Wood



Jerry Rust

district position. I am representing the people in South Eugene now as I represent everybody in the county," he said.

Although adoption of the boundaries plan was unanimous, Rust said he basically disagrees with that division. "Problems such as land-use planning and solid-waste disposal are affecting the whole county."

The commissioner explained that dividing the county into districts may create additional barriers to the solution of those problems. "If we start thinking in terms of parochial representation — with each district fighting against the other — then the county is in trouble."

Rust expressed hope that the Board will adopt a plan (similar to that used in Springfield city council elections) which will make commissioners accountable to the entire county electorate rather than the voters in a single district. Under such a plan, voters would choose two candidates from their dis-

trict by plurality during the primary election. Then, in the general election, voters throughout the county would select one of the two candidates in each of the five districts.

As adopted by the Board, Eugene is divided into two districts with 18th Avenue serving as the Mason-Dixon line. The North District extends to several precincts in the River Road and Santa Clara area.

While the Board was deliberating the proposed boundary plan, a group of citizens representing this area tried unsuccessfully to convince the commissioners to adopt an alternative proposal establishing a Northeast Lane District. These proponents sought to merge their district with several other outlying areas and break away from the city.

However, the commissioners abided by the plan developed and presented by a special county committee.

Rust commented that the ballot measure (passed last November) expanding the Board to five members was heavily favored throughout the rural areas. He said many voters saw a chance to have their special interests voiced with additional commissioners.

Rust added that because each district contains at least a part of the Eugene-Springfield urban area — with 80 per cent of the county population — city voters may still elect all of the commissioners.

The South Eugene District, where Rust currently lives, contains the rest of Eugene south of 18th Avenue. Springfield's district includes all of that city and branches out into parts of Eugene in the Coburg Road area.

The West Lane District consists of the area from the northern fringes of Eugene and Santa Clara to the coast. East Lane picks up the rest of the county including Glenwood, Creswell and Cottage Grove.

Local 'Town Hall' meetings to discuss welfare reform

By LAURENCE MAGDER
Of the Emerald

Tonight, citizens of Oregon will have a unique opportunity to express their political opinions. In 33 communities throughout Oregon, and in five different locations in Eugene, "Town Hall" meetings will be held to inspire public discussion and solicit public opinion concerning welfare reform.

A special PBS television program will be shown at each meeting. This will be followed by one-and-one half to two hours of

well-moderated discussion. Then, participants will have a chance to express themselves in writing on a prepared survey form.

The results of the survey will be sent to the Oregon Legislature and Governor; the U.S. Secretary of the Department of Health, Education, and Welfare; Congress; and the President of the United States.

The t.v. program, which starts at 7 p.m. records the highlights of a conference held in April in Portland entitled "Wages, Welfare, or

What?" At that conference, four basic issues were delineated. These will serve as the focal points of discussion at the "Town Hall" meetings. These are:

- Entitlement to Economic Security: Should entitlement be considered a Right or a Privilege?
- Eligibility for Economic Security: Should eligibility be open to all citizens as in universal approaches or only to the poor as in selective approaches?

- Responsibility for Economic Security: Should the responsibility rest with the public sector or the private sector of society?

- Form of Economic Security: Should benefits and services take the form of Employment or Income Maintenance?

A fifth issue has been added for the "Town Hall" meetings:

- Adequacy: How much income security is enough?

Each issue will be discussed for approximately 20 minutes following the show and each issue will be a subject of the survey.

The meetings are being sponsored by 23 diverse organizations under the leadership of the League of Women Voters and the American Association of University Women.

Peg Emery, president of the American Association of University Women, believes that the

meetings have value as educational tools and as public input into governmental decision. "For once, public opinion will be expressed while a new program is being drawn up, rather than after it is enacted" she said.

The meetings will start at 6:30 p.m. at the following locations in the Eugene area: Edison Community School, 1328 E. 22nd, Eugene, Laurel Hill Community School, 2621 Augusta, Eugene, Patterson Community School, 1510 W. 15th, Eugene, Springfield School Administration, 525 Mill, Springfield, City Council Chambers, Eugene City Hall, 777 Pearl, Eugene.

Child care will be provided. Transportation can be arranged by Mike Shelly of Family Shelter House (686-2654 or 484-1570). For further information call 343-8059, 345-1493, or 686-9250.

MEXICAN FOOD FOR PEOPLE WHO KNOW MEXICAN FOOD



Let's face it.

Most folks are either big on Burritos, tickled over Tacos or excited about Enchiladas.

At El Comedor, we think variety is the spice of life. You get to choose from a big selection of tasty Mexican dishes! Chili Rellenos. Quesadillas. Tamales. Tostados. Guacamole.

Tacos, Burritos and Enchiladas, too, because we know you love 'em.

Mexican food at its best.

Combination dinners at prices that make eating out affordable again.

EL COMEDOR MEXICAN RESTAURANT



on Oakway Road just behind the Oakway Mall.

Eugene. Phone 343-1788.

Open Daily 11 a.m. to 9 p.m. Sundays noon to 8 p.m.

Combination Plates from \$1.35. Mexican Beer. Bud. Michelob.

the **Hair Loft**
for Men and Women

Keep a cool head
this summer!

Let the Hair Loft give you an
easy-to-care-for, breezy
summer cut.

3 locations - relaxing atmosphere

walk in or call:

686-1496 2833 Willamette (across from the Willamette Plaza)	485-1202 1239 Alder (across from Sacred Heart)	484-2565 1461 E. 19th (next door to the Giant Grinder)
--	---	---