

Scholarships

Japan study grants offered

Four scholarships are again being offered by Waseda University to students who plan to study in Japan through the Oregon State System of Higher Education's Japanese Study Program. Each scholarship amounts to a \$600 reduction in the total cost of the study program.

The Japanese Study Program offers a year of study at the International Division of Waseda University in Tokyo. All classes except Japanese language are taught in English. There is no language requirement for the program. Participants earn regular academic credit at either the University of Oregon or Oregon State University while living with a

Japanese family. Financial aid awards apply to the program cost.

Applications for the Japanese Study Program are still being accepted. Further information on the program and the procedure for applying is available from International Student Services, 172 Oregon Hall, 686-3206, or the Office of International Education, Administrative Services Building, A-100, Oregon State University, Corvallis, 97331, telephone 754-3006.

\$\$ given for German study

Three to five cash scholarships worth approximately \$2,500 each will be available for students of the German Study Program at the University of Stuttgart during 1977-78. The German Study Program is sponsored by the Oregon State System of Higher Education.

Finalists to be recommended to the University of Stuttgart will be selected by the Executive Board of the German Study Program on

the basis of financial need, proficiency in the German language, scholarship and achievement and ability to adapt to new situations, as well as ability to meet criteria for acceptance into the German Study Program.

The German Study Program is a full academic year program which offers students the opportunity to earn University of Oregon or Oregon State University credit while studying at a German university in the state of Baden-Wurtemberg. Housing is generally in dormitories, although some students make individual arrangement. Financial aid awards can be applied to the total program cost.

Applications are now being accepted for the German Study Program. Further information and the procedure for applying is available from International Student Services, 172 Oregon Hall, 686-3206, or the Office of International Education, Admin. Services Building, A-100, Oregon State University, Corvallis, 97331, telephone 754-3006.

Fulbright posts open to teachers

The Council for International Exchange of Scholars has announced a few vacancies still exist for the 1977-1978 Fulbright-Hays Lecturing and Research Opportunities Abroad competition in the following fields: American history, literature and studies; business and economics; communications; engineering, library science; linguistics and English as foreign language; mathematics, computer science and music.

Most vacancies are in Europe and Africa with a few in the Far East and the USSR.

Basic eligibility requirements include U.S. citizenship, college of university teaching experience, a doctoral degree for research and some language fluency.

Additional information on particular countries available may be requested from Nick Tri, Office of Federal Relations, ext. 5132.

Aid available to campus females

Application deadlines for a scholarship which is awarded annually to a sophomore, junior or senior undergraduate woman is Wednesday, March 30.

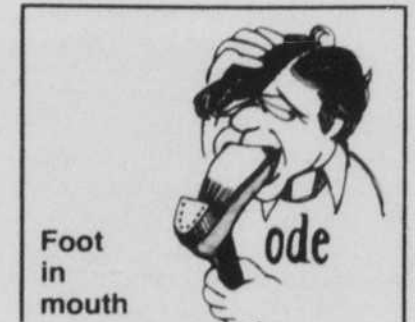
The Ella Travis Edmunson and Mercy Travis Davis Memorial Scholarship is awarded each year to a full-time woman student at the University who is in good academic standing and has demonstrated potential leadership capabilities. The scholarship is designed to help the recipient give service in an open community upon graduation.

Application and reference forms for the scholarship are available at the YWCA Lounge in Gerlinger Hall. Minority women are encouraged to apply.

Consumers get chance to voice insurance probs

A deputy insurance commissioner will be available at the Chamber of Commerce in the Eugene Hotel, Broadway and Pearl Streets from 9 a.m. to noon and from 1 to 4 p.m. on Tuesday to receive inquiries and complaints relating to insurance problems.

The appearance is part of the statewide "circuit rider" program, designed to make the services of the insurance commissioner's office more readily available to Oregonians.



Foot in mouth

A few errors slipped into Friday's IFC story. Lois Hill of the Off-Campus Housing Office requested a budget totaling \$240 to pay for work at the state Legislature. In addition, the funding requests presented Wednesday night were not tabled for further action. According to Paul Bartel of the IFC, the requests were heard for the first time last Wednesday and according to IFC practice, will not be acted upon until their second hearing this Wednesday.

Also, a segment of a quote by William Lamon, associate professor of teacher education, was omitted in Friday's story about drop-add deadlines. Lamon's quote should have read:

"The decision would now be in the hands of the instructor and the adviser instead of the administrator."

Briefs

MEETINGS

OSPIRG's local board meets at 4:30 p.m. today in the EMU, room to be posted.

There will be a meeting at 1 p.m. today at 1597 Agate St. for Leisure Studies students.

A general information meeting for the Women's Symposium will be held at 3:30 p.m. today in the EMU, room to be posted. All interested persons, both from the community and from on campus, are invited to attend.

LECTURES

Prof. William Parker of Yale University's economics department will speak on "What It Took to Develop the Industrial Revolution in Britain" at noon today in the EMU, room to be posted.

Parker is the former president of the Economic History Association and was editor of the "Journal of Economic History." He is presently chair of the Council of West European Studies at Yale, an organization which promotes interdisciplinary research.

Parker will discuss the balance of free enterprise and monopoly in pre-industrial Britain and the ways that balance led to the Industrial Revolution.

John Richards will speak on "Interior Structure and the Comparison of Visual Forms," at 4 p.m. today in Room 156 Straub.

AV FILMS

The following instructional rental films have arrived early. Faculty members may schedule them for classes with the Instructional Media Center before 2:30 p.m. the day before they are needed. Students or faculty members may request showings on a first-come, first-served basis Monday through Friday between 6 and 10 p.m. Films are not available after the showdate listed below.

For more information, contact the center, x3091.

Showdate	Title	Department
Feb. 21-23	Stories of Four Japanese	Japanese
Feb. 22	Classification: Piaget	Curriculum & Instruction
Feb. 22	Waves on the Water	Geology
Feb. 22	Bitter Harvest	Ethnic stud
Feb. 22-24	Distribution of Plants and Animals	Biology
Feb. 22-24	Evolution of Man	Biology
Feb. 25	Social Learning and Family Therapy	Psychology

MISCELLANEOUS

Students from the University's Health Sciences Center School of Nursing in Portland will have an informal question and answer session tonight at 7:30 in the EMU, room to be posted. Pre-nursing

students and other interested persons are invited to attend with questions on admissions, procedures, curricula, scheduling or anything else. The session is sponsored by the OAA and the PHSC.

CAMPUS INTERVIEWS

Orientation sessions explaining the services available to job seekers are held every Thursday at 3:30 p.m. in Room 246, Susan Campbell. Free workshops in resume writing, job interviewing and job search are also offered.

Special arrangements for workshop and interview sign-ups are available for handicapped students by calling x3235.

Interview sign-up sheets for the following organizations will be posted at 8:15 a.m. Wednesday.

March 1. Boise Cascade Corporation. Interviewing for administrative assistant to manager and assistant foreman. MBA with technical or analytical background required for administrative assistant to manager. Bachelors with analytical-quantitative background required for assistant foreman.

March 2. Union Pacific Railroad. Interviewing for corporate auditor and cost and profitability analyst. BS in accounting required for corporate auditor. MBA with undergraduate work in finance, accounting or operations research required for cost and profitability analyst.

March 3. Great West Life Assurance. Interviewing for sales representative, group accounts. Majors in business, commerce, communications, finance, insurance, marketing preferred.

March 3. Upjohn Company. Interviewing for sales agent and management. All majors.

March 4. Mennonite Central Committee. Interviewing for prospective voluntary service in teaching.

March 4. New York Life Insurance Company (Eugene office). Sales.

March 4. Andersen Windows. Interviewing for sales management. Architecture, drafting, building majors and others.

Feb. 28. University of San Diego, lawyer's assistant program. Group meeting, 9 to 10 a.m. Sign up in placement office.

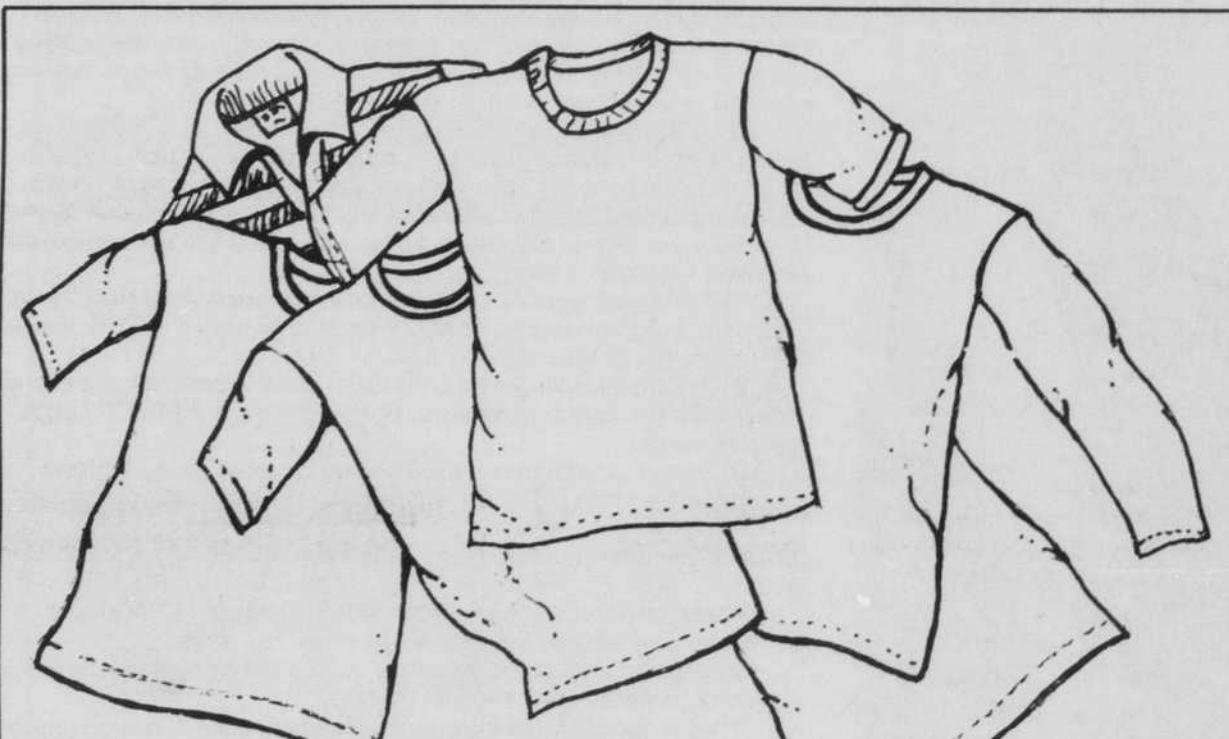
Feb. 28. Portland Public Schools. Group meeting at EMU.

Feb. 28 and March 1. Pottlatch Corporation. Positions for forest industry management, forestry and forest products research, management, computer science. MBA preferred for forest industries management. BA and MA preferred for wood science. MA preferred for industrial relations.

Feb. 28 and March 1-4. U.S. Action (Peace Corps and Vista). Interviewing for Peace Corps and VISTA volunteer positions. Degrees preferred: education, math, chemistry, biology, special ed., health ed., social science. Interviewing on Feb. 28 and March 1 at EMU. Interviewing on March 2, 3, and 4 at placement office.

March 1. American Graduate School of International Management. Will interview all disciplines.

The BULL SHED
853 E. 13th St.
NOW OPEN AT 7:00 A.M. FOR
BREAKFAST
MENU INCLUDES:
EGGS, HASHBROWNS, and TOAST 95c



T-Shirts Sale Up To 40% Off on Close-outs, discontinued styles.

T-shirts
Jackets
Rugby shirts

Robes
Gym Shorts
Jerseys

Official
Duck Blankets

Over 30 styles in all, all reduced up to 40%.

Also 1/2 Price on all lettering and transfers

U of O Bookstore 13th at Kincaid
Phone 686-4331

Open: Mon-Fri 8:15 a.m. to 5 p.m. Sat 9 a.m. to 1 p.m.

Oregon Daily Emerald

The Oregon Daily Emerald is published Monday through Friday except during exam weeks and vacations, by the Oregon Daily Emerald Publishing Co., Inc., at the University of Oregon, Eugene, Ore. 97403. The Oregon Daily Emerald operates independently of the University with offices on the third floor of the Erb Memorial Union.

The Oregon Daily Emerald is a member of Associated Press and College Press Service.

News and Editorial 686-5511
Display Advertising and Business 686-3712
Classified Advertising 686-4343
Production 686-4381

Editor Greg Wasson
Managing Editor Wally Benson
Asst. Managing Editor Martha Bliss
News Editor Lora Cuykendall
Graphics Editor Perry Gaskill
Asst. Graphics Editor Steve Sandstrom
Editorial Page Editor Jackman Wilson
Sports Editor Jeff Nielson

Asst. Sports Editor
Entertainment Editors

Wire Editor

Associate Editors:
Department and Schools
Features Tom Wolfe
Local Politics Nick Gallo
State Politics Tom Jackson
Community Mike McLain
State System and Student Services Heather McClenaghan
ASUO Lori Peterson
Environment Brenda Tabor
E.G. White-Swift

Night Editor

Production Manager
Advertising Manager
Classified Advertising
Accountant

John Henderson
Bob Webb
Peter Duryea
Paul Waldschmidt

Tom Wolfe
Nick Gallo
Tom Jackson
Mike McLain
Heather McClenaghan
Lori Peterson
Brenda Tabor
E.G. White-Swift

Wally Benson

Kate Seigal
Carl Bryant
Darlene Gore
Ted Johnston