

## emu craft center

You don't have to take a workshop to use it. The Craft Center is for all students, staff and faculty to use.

pottery—ceramics—photo darkroom  
jewelry—woodshops—graphics  
ground floor of emu 686-4351



New & Used Books  
Top Prices Paid  
For Your Quality  
Used Books  
Beautiful Selection Of Cards

**THE 2ND HAND BOOK MAN**  
BUY · SELL · TRADE  
342-2002 3101 W. 7th AVE.

## Oliver appoints IFC members

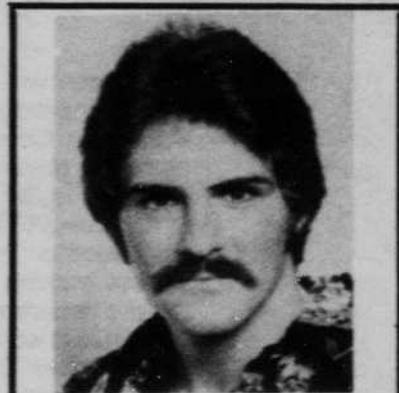
ASUO Pres. Jan Oliver has appointed Jetea Johnson, Mary Gillan and Doug Albares to fill the three Incidental Fee Committee (IFC) vacancies created when she, Jamie Burns and Tamanika Ivie vacated their positions on the committee.

Oliver resigned her IFC spot to assume her duties as president and both Burns and Ivie left their positions when Oliver chose them as vice-presidents.

Johnson, a junior in psychology, worked for the Center for Self Development during the past year.

Gillan is a graduate student in education.

Albares is a junior CSPA major.



## HAIR FAIRE

"for Guys too"

1410 ORCHARD  
Above Local Loan  
686-2544

## Wilson picked as acting dean

Shirley Wilson has been named Acting Dean of Students at the University for the 1976-77 academic year. Her appointment, announced Wednesday by Gerald Bogen, vice president for student affairs, becomes effective Thursday.

Wilson, the University's associate dean of students since 1969, will serve in the absence of Dean Robert Bowlin, who will be on sabbatical leave during the coming academic year. During his sabbatical, Bowlin will be a visiting scholar at Stanford University.

The acting dean will be responsible for coordinating University activities in lifelong learning, career planning and placement, counseling, international student service, orientation and student conduct.

## Special votes slated for today

Several special district elections will be held Tuesday. Among the local elections will be Lane Community College's operating budget, the city of Eugene's operating budget, and Eugene School District 4-J's operating budget.

Included on Eugene's ballot will be a measure to collect taxes from downtown businesses to continue free parking.

## briefs

### MISCELLANEOUS

The University YWCA is offering Assertiveness Training for Women beginning Wednesday to run for five weeks from 7 p.m. to 9:30 p.m. The course will be taught by Sue Betts and Molly Fox, and will include readings, group discussion, roleplay, and practice with videotape feedback. Tuition is \$15 for YWCA members, \$20 for non-members. Enrollment is limited to 20. For more information or registration call 686-4439, 9 a.m. to 3 p.m. weekdays.

White Bird Clinic will hold a 10 week growth and encounter group starting Wednesday. The leader is Douglas Parker, whose orientation and training is in Gestalt methods. Participants will be expected to attend regularly; the group will be closed after July 7. Meetings are every Wednesday, 6 p.m. to 8 p.m. For more information call 342-8255.

Recreational folk dancing happens every Friday and Monday nights in Gerlinger Gym. There is teaching from 7:30 p.m. to 8:30 p.m. and request dancing after 8:30.

The Survival Center is organizing a picnic lunch and outing for families on Saturday. Carpools will depart at 10 a.m. from Amazon Community Center. Bring recyclable plates, eating utensils, food and drink. The car pool and picnic will be held on Fairview Peak in the Umpqua National Forest near Roseburg. Contact Kurt Kutay at 686-5014 or 484-0978 for more information.

A variety of educational opportunities are offered throughout the summer in Newport at the Marine Science Center. A complete schedule of events is available from OSU's Summer Term "Seasqua '76" office.

"Aspects of Landscape," a photographic exhibit by Ruth Lefevre, a graduate student in geography, is being held through July 11 at the Brunier Gallery of Student Photography in the University Library. The gallery is open from 8 a.m. to 10 p.m., Monday through Friday.

# TOMORROW



Wed Only

## 1¢ BANANA SPLIT SALE

Buy one at the regular price  
get the second for 1¢

Dairy Queen

13th & Hilyard Store Only



Don't forget about  
**BICENTENNIAL FARES**  
save up to  
**30%**  
on round trip flights

**Eugene Travel** 687-2823

**UNIVERSITY PARK BAPTIST CHURCH**  
2520 HARRIS STREET ■ EUGENE, OREGON 97405  
Phone 344-3108

**WELCOME SUMMER STUDENTS**  
Attend Sundays  
Bible Study — 9:45 a.m.  
Worship — 11:00 a.m.  
Christian Training — 6:00 p.m.  
Evening Worship — 7:00 p.m.

## Oregon Daily Emerald

|                        |               |   |
|------------------------|---------------|---|
| Editor                 | Greg Wasson   | The Oregon Daily Emerald is published Monday through Friday during fall, winter and spring terms, except during exam weeks and vacation periods. During summer session the Emerald is published Tuesday during the eight-week term. |
| Mng. News Editor       | Rick Bella    | The Oregon Daily Emerald is published by the Oregon Daily Emerald Publishing Co., Inc., at the University of Oregon, Eugene, Oregon 97403.  |
| Asst. News Editor      | Martha Bliss  | The Oregon Daily Emerald offices are in the north wing of the Erb Memorial Union.   |
| Asst. News Editor      | Kathy Craft   | News/Editorial  |
| Graphics Editor        | Perry Gaskill | Display Advertising/Business  |
| Chief Night Editor     | Jerril Nilson | Classified Advertising  |
|                        |               | Production  |
| Production Manager     | Kate Seigal   | 686-5511  |
| Advertising Manager    | Carl Bryant   | 686-3712  |
| Classified Advertising | Bob Webb      | 686-4343  |
| Accountant             | Ted Johnston  | 686-4381  |

The Oregon Daily Emerald is a member of Associated Press and College Press Service.