

EMU: the amazing multi-maze

The EMU houses a number of student-run programs, recreational and food service operations and special services for the University student.

Most student-operated programs at the University have their offices on the lower level of the East Lobby. Suite 1 is operation center for PACE, SEARCH (a program which offers student-taught classes in unique and specialized areas such as juggling, recycling and carpentry, to name a few), Graduate Student Council, Women's Resource and Referral Center, Gay People's Alliance, the Gerontology Association and the Survival Center. The Cultural Forum, responsible for bringing good music and films to campus is located in Suite 2. Suite 3 is the Housing Office, where students can get help finding a place to live, renting their place out, or learning more about the Greek system on campus. Suite 4 contains the main offices of the student governance bodies such as ASUO, the Student Affairs Board, the EMU Board, the Elections Board and the Constitutions Committee. Housed in Suite 5 are the Incidental Fee Committee, Action Now, the Chinese Student Association, Alert, the University Food-Op and class officers.

Across the breezeway (and past a Baskin-Robbins store on the right), the lower left entrance leads to the EMU recreation center. The EMU Print Shop is located here, as well as photostat machine and a Xerox copier. The recreational area features several large pool tables, two bowling alleys, a shuffleboard, pinball machines and ping-pong tables. Past the tables and the bowling lanes are the Black Student Union, Native American Student Union, the YMCA and Footnotes. The Outdoor Resource Center, which sells hiking, skiing and climbing equipment, is located at the end of this hall.

On the other side of the Fish-bowl is a carpeted area where students can study in relative quiet. The stairs to the left lead to the International Lounge, another peaceful place to survey the textbooks. This tiny, secluded nook also has a practice room, furnished with a piano, and a music listening room with a wide selection of tapes from Coltrane to Chopin. Back down the stairs and

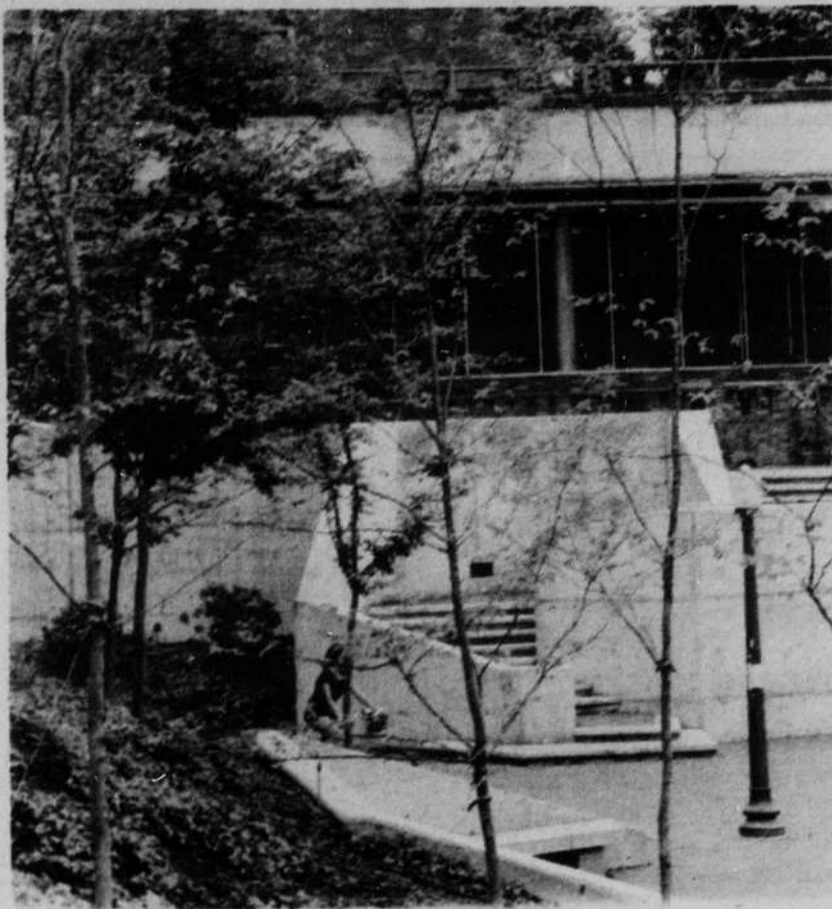


Photo by Perry Gaskill

around a corner to the left is a branch of the United States Post Office.

The EMU Main Desk is located in the heart of the building. If you need tickets for local or campus concerts or the Greyhound bus, if you have some film that needs developing, need to place an ad in the *Emerald* or to have a check cashed, the Main Desk is the place to go. Also located in this area is a student store which sells school supplies, magazines and candy.

Upstairs, the East Lobby houses the Skylight, a new addition to the EMU in the past couple years. Decorated in bright blue

and orange and furnished with comfortable booths and plenty of windows, the Skylight is a pleasant place to study or talk. The food service upstairs features vegetarian food and sandwiches at fairly low prices.

During summer session, the EMU will be open from 7:30 a.m. to 7 p.m. Monday through Thursday, and on Friday from 7:30 a.m. until 4 p.m. The recreation center will be open from 10 a.m. to 10:30 p.m. Monday through Thursday and 11:30 a.m. to 2:30 p.m. on Friday. The EMU will be closed on weekends through summer term.

by Patty Durocher

Of Grape And Grain

featuring a large selection of imported beer and wine plus sandwiches and deli items

49 W. 29th Ave. 686-9463

MAUDE KERNS ART CENTER

- PROFESSIONAL ARTISTS-INSTRUCTORS
- 2 BLOCKS EAST OF AGATE ON 15th
- SMALL INFORMAL CLASSES
- OPEN CERAMICS WORKSHOP
- FEES \$18-\$34

CERAMICS
WEAVING
JEWELRY
DRAWING
PAINTING
STAINED GLASS
PHOTOGRAPHY
BASKETRY
PRINTMAKING

SUMMER CLASSES

REGISTRATION

JUNE 14-25

345-1126

KAMPUS BARBER SHOP

CONVENIENT LOCATION
PERSONALIZED SERVICE

Latest Hair Care
Techniques & Styling
in an Atmosphere of
Nineties Charm
& Congeniality

We Use & Recommend RK
& Redken Products

OPEN TUES.-SAT.
8 AM TO 5:30 PM

343-7654

851 E. 13th




Eugene fibre company



1590-451 WERVING • SUPPLY HIGH 15711

sheepwool alpaca goat hair cow hair camel hair silk linen cotton jute sisal hemp palm

SPINNING • KNITTING • KNOTTING

EMU Check Cashing Information

The Erb Memorial Union Main Desk Store cashes checks as a service for students, faculty and staff of the University of Oregon. Students must present a **current certificate of registration and a plastic identification card with picture**; faculty/staff must present their plastic identification card with picture and current validation sticker.

There is a ten cent service charge per check. Make checks payable to the Erb Memorial Union and include Eugene address and phone number (or department and extension for faculty-staff) on the check. The limit on checks is \$5.00 until 4:30 p.m. weekdays and \$10.00 evenings and weekends.

When writing checks, double-check your bank balance. Make sure what you think will be a "good check" doesn't turn out to be a "bad check." If your check is returned, there is a service charge of \$3.00. This is in addition to any service charge charged by your bank. You will also lose the privilege of cashing checks at the Erb Memorial Union for the remainder of the year (July 1-June 30).

To abide by policies set forth by the banks: 1) We cannot accept counter checks, 2) There can be no alterations or changes made on checks, 3) We cannot accept personal second party checks and 4) If you do not have personalized checks additional I.D. must be presented.

I.D. FOR CASHING CHECKS PRIOR TO LAST DAY TO PAY FEES WITHOUT PENALTY.

New Students:

1. U. of O. statement of admission with student I.D. number
2. Valid I.D. with signature and description.

Returning Students:

1. Previous term's certificate of registration.
2. U. of O. Plastic I.D. card with picture.

Summer Session Only:

1. Validated certificate of registration.
2. U. of O. plastic I.D. card with picture or second piece of valid I.D.