

Outdoor, environmental activities . . .

(Continued from Page 16)

Transportation and lodging arranged. Participants are responsible for own food, equipment and lift tickets. (Chair lifts—\$6 day; Murray Meadow rope—\$2; beginner rope—free). Cross-country skiers welcome, too. Open to teens through adults. (Children may participate if accompanied by parent.) Dec. 27, 28, 29. \$23. Registration closes 5 p.m., Dec. 22.

Programs for children

+ **Exploring Ecology**—Hikes, field trips and films for boys and girls grades 2-6. Meet at Lamb Cottage in Skinner's Butte Park. Sept. 27, Oct. 4, 11, 18, 25, 3:15 p.m.—5 p.m. No charge.

+ **Outdoor-Environmental Camps**—Three overnight camps at Clark Creek for 5th and 6th graders. Campers leave Friday at 3:30 p.m. and return about 5 p.m. Saturday. Transportation by bus. Bring sleeping bag or blanket roll, warm clothing, rainwear, eating utensils, toilet items and flashlight. \$5 fee for each camp includes meals. Camperships available.

Camp I—Oct. 6-7. "Enjoying Nature." Explore the woods and creekbeds. Do your own thing in arts and crafts using natural materials. Leave from Sheldon Meadow Community Center. **Camp II**—Oct. 20-21. "Outdoor Living Skills." Practice setting up tents, build campfires and cooking meals in the out-of-doors. Leave from Washington Park. **Camp III**—Oct. 27-28. "Survival." Learn how to stay found, and what to do in case of outdoor emergencies. Learn to make your own shelter and build a fire even with wet wood. Leave from Echo Hollow Pool.

Rain or Shine Hike—Two to three miles round-trip for boys and girls grades 2-6. Meet at Washington Park at 10 a.m. on Oct. 13. Bring lunch, rain gear and 25 cents.

Urban renewal projects . . .

(Continued from Page 12)

127A—Eugene Mini-Mall Development. A three-story, enclosed mall building on the northeast corner of Olive and 10th for stores, shops, offices and professional suites. Estimated cost to exceed \$1,000,000.

116A—William and Ada Lee, Ming's Restaurant. A one-level building on the corner of 7th and Willamette. Estimated cost \$320,000.

116A1—Boehnke Printing Company and Keith Rodman, Attorney. A one-story building on the east side of Willamette in the 700 block. Estimated cost \$120,000.

116B—Unthank Seder Poticha Architects, and others. Rehabilitation of the Smeed-Baker Hotel in the 700 block of Willamette for office and retail rentals. Estimated cost \$206,000.

128A—Portland Federal Savings & Loan. A three-level building surrounding an open mall with space for office and commercial rentals and financial services on the southwest corner of Broadway and Oak. Estimated cost \$1,700,000.

122A—Johnson and Harrang Investment Company. A three-story building with basement on the northwest corner of Broadway and Oak for legal offices, other office, and retail rental space. Estimated cost \$1,300,000.

129C—E. B. Sahlstrom, Attorney. A three-floor building on the southwest corner of Broadway and Oak for legal offices, other office and retail rental space. Estimated cost \$525,000.

132A—11th & Oak Professional Building. A one-story building on the northeast corner of 11th and Oak for legal offices and other office rental space. Estimated cost \$300,000.

Completed

128B—The Broadway Department Store, \$475,000.

127C—Harry Ritchie's Jewelers, \$170,000.

Held

113A & 114A for auditorium-convention center.

115C & D for a motor hotel.

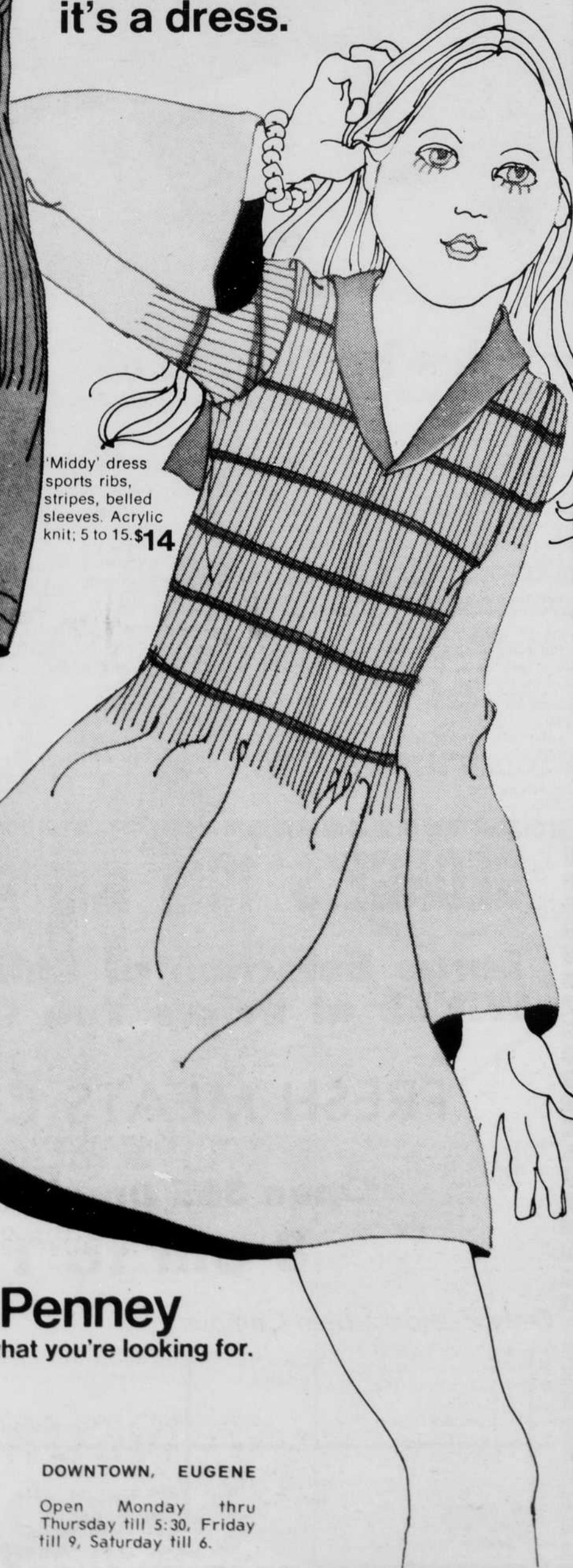
Every junior has a
favorite sweater.

This year,
it's a dress.



'Middy' dress sports ribs, stripes, belled sleeves. Acrylic knit; 5 to 15. \$14

Buttonfront dress has club collar and ribby sleeves. Acrylic knit in green, orange, purple or black. 5 to 15. \$18



JCPenney

We know what you're looking for.

VALLEY RIVER,
EUGENE

Open Monday thru Friday
till 9, Saturday till 6,
Sunday 12 to 5.

DOWNTOWN, EUGENE

Open Monday thru
Thursday till 5:30, Friday
till 9, Saturday till 6.