

Racket Men Meet Whitworth, WSU

Oregon's tennis team, coached by Vern Ball, has an opportunity to go two matches above the .500 mark this weekend when they travel to Washington for a pair of matches.

The Ducks, 3-3 on the season, face Whitworth at Spokane on Friday and then travel to Pullman to meet a weak Washington State team.

Last weekend the Ducks upset a highly rated Seattle team, then lost to Washington's young Huskies, 7-2.

The Ducks, favored in both matches will be using the matches and their meeting with Portland at Eugene Monday as tune-ups for their rematch with Ore-

gon State on May 3. The Beavers beat the Ducks 7-2 at Eugene in their first meeting.

Gundars Tilmanis will try and come back from two setbacks last week at the first singles spot and Beau Miller or sophomore Gerry Shaw will probably play number two or three. Jeff Lewis or Chuck Deardorff will play four or five and Barry Sterrett will play sixth.

Ball will probably go with his regular doubles of Tilmanis and Shaw, Deardorff and Miller, and Sterrett and Lewis, who lost their first match of the year to Washington.

Sterrett, a sophomore, has yet to be beaten in singles action this year.

To Upset Beavers?

Golfers Hoping for Big Day

Oregon golfers go into the weekend's final rounds of the Northern Division championships in third place, five strokes behind defending champion Oregon State, and hoping for a big swing of scores on their home course.

The third round will be played at 1 p.m. today at Oregon's home course, the Eugene Country Club, and the fourth will be played Saturday at 7:30 a.m. in Corvallis.

After last weekend's first two rounds in Seattle, Oregon State leads with a six-man total of 919 strokes. Washington is second with 923, Oregon third with 924 and Washington State fourth with 971.

"Oregon State has a definite advantage," Duck coach Jack Adler said, citing the fact that the Beavers play the final round on their home course.

"There is more of a local knowledge course than Eugene's. There are a lot more blind spots and blind pin placements," he said.

The Ducks hope to offset the Beavers advantage with a big day on their home course. "We'd like a 15 to 20 point swing," Adler said. "It can happen very easily."

In Seattle Washington had a 19-point lead over OSU after the first day, but lost it on the next. "Our kids haven't played up to their potential yet," Adler continued. "We could put it all together and if we do we'll be out in front by 15."

Going into Friday's round Oregon's Stan Smith is the leading individual golfer in the championships with a 144 on rounds of 71 and 73.

Adler is making one change in

his lineup by inserting Jim Taggard in the place of Bill DeBellis and he indicated he may make another change for Saturday's round by playing Steve Morrison if any of the other regulars show signs of faltering.

Rounding out the Duck team will be Mike Davis, Gay Davis, Don Morrow, and Ralph Schafer.

In preparation for Saturday's final round the Ducks spent a practice session at Corvallis Thursday and concentrated on the short irons which are necessary for the short Corvallis course.

Emerald SPORTS

Frosh Sports

For the first time in the spring season, all of Oregon's freshmen athletic teams are in action this weekend with the frosh track team holding its first dual meet of the season and the tennis team meeting rival Oregon State.

TRACK

Frosh track coach Jack Berg predicts an "easy win" when his Ducklings face Clark College in their dual meet opener Friday at 3:30 p.m. on Hayward Field. "They will be pretty weak," said Berg. "They usually aren't able to come with a full team."

The Oregon Frosh boast individual standouts Tom Smith, who has broad jumped 24-6 3/4, and half miler Jim Gorman who has run 1:55.

The Frosh will be strong in the distances with miler Gary Lineburg, 4:11, and Gorman, 4:14, and two-miler Terry Dooley, 9:07.

Mike Chaney and Warren Logan are both 14-foot pole vaulters, while Terry Beadle, 221 in the javelin, and Mike Gilmore, 180 in the discus, give the Ducklings good representation in the field events.

BASEBALL

Oregon's frosh baseball team will go after its seventh win Saturday when it meets Linfield's JV's in a 1:30 p.m. doubleheader at McMinnville.

The Frosh, 6-3-1, have been getting good pitching and defense but little hitting, according to coach Howard Fetz.

Fetz was unsure of who he would pitch Saturday but said that Dave Anderson, John Bodney and Larry Franek would see action since they are next in line in the pitching rotation.

TENNIS

The frosh tennis team, 8-1 victims to Roseburg High School Wednesday, meet arch rival Oregon State at Corvallis Friday in the first of three matches between the two teams.

Leading the Frosh is Ron Zielinsky, 1966 Washington State High School champion who was Oregon's only winner against Roseburg. Zielinsky will be favored over Oregon State's number one singles player who was the Idaho State High School champion.

Oregon frosh coach, transfer Dale Morse, will go with the same singles players he used against Roseburg but will change the doubles combinations.

Following Zielinsky will be Ron Selveira, Cardell Ho, John Lipke, Chris Zimmerman and Stuart Stout.

In the doubles Morse will likely combine Zielinsky with Ho in the first doubles. Selveira will be teamed with either Mark Conway or Lipke in second doubles and Stout and Zimmerman will play third doubles.

GOLF

The frosh golf team, undefeated in four matches, travels south for weekend matches against Medford High School Friday and the Grants Pass Country Club's men's team on Saturday.

Frosh coach Gary Wiren is juggling his line-up on the basis of play in the last two weeks. Mov-

ing up to number one is Mike Currie who shot a 71 last week against Eugene Country Club and a 74 two weeks ago against Lebanon.

Playing second will be Mike Bergstrom and third will be Fred Haney, 1966 Oregon State high school champ who had been playing number one. Fourth will be Rick Copping, fifth, Jud Guittau and sixth, Alan Mitchell.

Medford has one of the strongest teams in the state, Wiren said. Kent Clark leads the Medford squad which has not had a y team member shoot out of the 70's in the last three matches.

Want to really get results? Use Emerald Classified Ads



SYLVE HANSON

Panhellenic

Woman of the Month

will receive a

complimentary

dinner of her choice

at

BEV'S STEAK HOUSE

1905 W. 6th - 342-2332

Open 11:30 a.m.-12 Midnight

Sundays 5 p.m.-10 p.m.

by

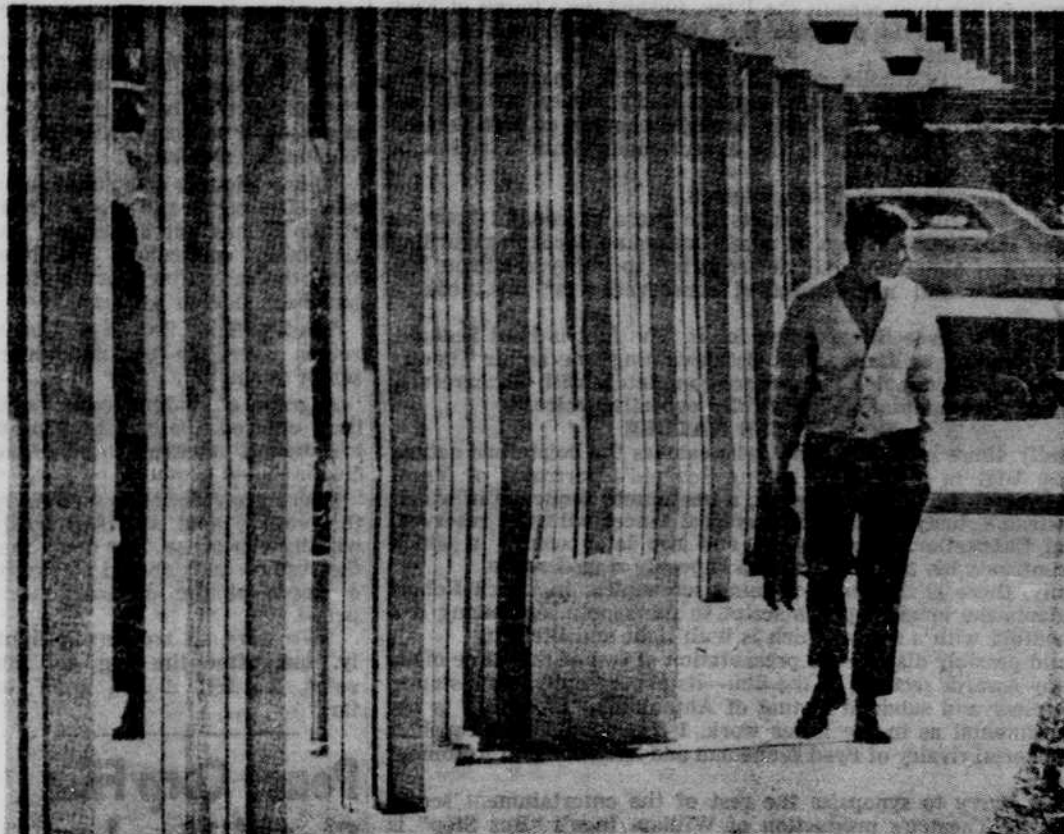


The College Plan for the College Man and Woman

Fidelity Union

Life Insurance Company

That Must Be The College Inn!



Who lives at The College Inns? Students. Girl students who like to kick off their shoes and walk on soft carpets. Men students who like three big meals a day—with seconds. Girls who like big closets for clothes and big beds for stuffed animals. Men who like cueing it up after class. Girls who like private baths, large mirrors and enough dresser drawers for 487 hair rollers. Men who like a place for concentrated study—alone. Girls who like moments of privacy for treasured letters. Men who like to pick a guitar now and then. Girls who don't like to walk far to class. Men who like to let the maid straighten up.

CHECK THESE OUTSTANDING FEATURES:

- Excellent food and diversified menus (20 meals a week—full seconds).
- Private and semiprivate rooms and baths.
- Comfortable, homelike furniture, designed exclusively for The College Inn.
- Wall-to-wall carpeting and double drapes.
- Private dining rooms.
- Recreational lounges with color TV, pool and ping-pong tables.
- "Quiet" lounges and study carrels.
- Close to campus.
- Large, private parking lot.
- Laundry facilities, maid and linen service.



1000 PATTERSON

MODEL ROOM OPEN 9-5