

Faculty Coming, Going Under Sabbaticals

A number of University faculty members will be returning to the campus this fall from sabbatical leaves and leaves without pay, and others will be leaving on their sabbaticals and leaves without pay.

Among those returning from sabbatical leaves are Lois Eaker, law librarian; Clifford L. Constance, registrar; Jack Wilkinson, professor of art and head of the department of fine and applied art; Jan Zach, associate professor of art; Charles Bryan Ryan, associate professor of art;

Richard W. Lindholm, dean of the School of Business Administration; Edward W. Reed, head of the department of finance and business environment, School of Business Administration; David A. Baerncof, associate professor of business statistics, School of Business Administration.

Adolf A. Sandin, professor of education; Vernon Stephen Sprague, professor of physical education and swimming coach; Exine A. Bailey, associate professor of voice; Christof A. Wegelin, professor of English;

John C. Sherwood, professor of English; Melvin Cohen, associate professor of biology; Sanford S. Tepfer, associate professor of biology; Richard M. Noyes, profes-

sor of chemistry and head of the Department of Chemistry; Ernest H. Lund, associate professor of geology; Clyde Patton, professor of geography;

Kenneth W. Porter, professor of history; Lloyd R. Sorenson, professor of history; Homer G. Barnett, professor of anthropology; and Theodore Stern, professor of anthropology.

Returning from leaves without pay are Hans Arthur Linde, professor of law; Robert Samuel Summers, associate professor of law; Paul H. Earls, assistant professor of music and music theory; Franklin W. Stahl, professor of biology; Terrell L. Hill, professor of chemistry;

Ivan M. Niven, professor of mathematics; Kenneth Allen Ross, associate professor of mathematics; Edwin R. Bingham, professor of history; Arnulf Zweig, assistant professor of philosophy; and Kenneth Polk, assistant professor of sociology.

Slated for sabbatical leaves are Donald L. Hunter, head of the audio-visual department, Library, summer; Eugene W. Dils, director of placement, fall term; Golda P. Wickham, dean of women, fall term; David J. McCosh, professor of art, 1965-66;

Roy J. Sampson, professor of transportation, School of Business Administration, 1965-66;

Raymond Lowe, professor of education, spring term; Paul Edward Kambly, professor of education, winter and spring terms;

Corlee Munson, assistant professor of physical education, 1965-66; Theresa Malumphy, assistant professor of physical education, 1965-66; R. Max Wales, professor of journalism, fall term; Carl C. Webb, associate professor of journalism, spring term; James M. Shea, director of University Relations, winter term;

Constance B. Bordwell, senior writing, 1965-66; Stanley B. Greenfield, professor of English, 1965-66; Carl L. Johnson, professor of Romance Languages, fall term; Richard H. Desroches, assistant professor of Romance Languages, 1965-66;

Elwood A. Kretsinger, associate professor of speech, fall term; instructor in English and legal Kirt E. Montgomery, associate professor of speech, spring term; Paul L. Risley, professor of biology, fall and winter terms; Arnold L. Soderwall, professor of biology, 1965-66;

LeRoy H. Klemm, professor of chemistry, 1965-66; Carl L. Johannessen, associate professor of geography, 1965-66; E. G. Ebbig-

hausen, professor of physics and astronomy, 1965-66; Francis E. Dart, professor of general science, 1965-66; Gustave Alef, professor of history, 1965-66; Paul S. Holbo, assistant professor of history, 1965-66;

Joseph R. Fiszman, assistant professor of political science, 1965-66; Robert W. Leary, associate professor of psychology, 1965-66; Guy Benton Johnson, Jr., associate professor of sociology, 1965-66; Herbert Bisno, associate professor of sociology, winter and spring terms; Robert E. Agger, professor of political science, 1965-66.

Taking leaves without pay will be Patricia A. Lawrence, assistant professor of history of art, 1965-66; Richard O. Carlson, associate professor of education, 1965-66; Silvy A. Kraus, associate professor of education, 1965-66; Dorothy Candland, associate professor of education, continuing, 1965-66;

M. A. Patricia Montgomery, assistant professor of physical education, continuing, 1965-66; Gabriel Chodos, instructor in music, piano, music theory and history, 1965-66; William E. Cadbury, associate professor of English, 1965-67;

Thelma N. Greenfield, assistant professor of English, 1965-66; Chandler B. Beall, professor of Romance Languages, half year; Emmanuel S. Hatzantonis, associate professor of Romance Lan-

guages, 1965-66; Bower Aly, professor of speech, continuing to January 1, 1966;

Bayard H. McConnaughey, assistant professor of biology, continuing 1965-66; Lucian Marquis, director of Honors College, 1965-66; Marshall D. Wattles, professor of economics, continuing 1965-66; Thomas Hovet, Jr., professor of political science, 1965-66;

Gene E. Martin, associate professor of geography, winter and spring terms; Thomas H. M. Rigby, research associate, educational service bureau, continuing, 1965-66.

Math Professor Publishes Work

Ivan Niven, professor of mathematics at the University, is the author of "Mathematics of Choice or How to Count Without Counting," just published by Random House/Singer.

Niven's monograph is the 15th in the series of the New mathematical Library. Niven also wrote the first monograph of the series, "Numbers: Rational and Irrational."

The New Mathematical Library, a project of the School Mathematics Study Group, consists of a series of expository paperbacks on important topics in mathematics. These are aimed at the improvement of mathematics education in the United States.

Business Dean Favors Lower Direct Taxes

A substantial reduction in the portion of U.S. federal government receipts arising from direct taxes was recommended by Richard W. Lindholm, dean of the School of Business Administration, in a paper delivered recently at a meeting at San Diego.

The meeting was held by the Western Economic Association at San Diego State College.

Lindholm said that economic growth of the free world would be well served by a basic change of the American Tax system toward the form used by the European Economic Community, which has a greater use of indirect taxes than the United States.

This would require legislation providing for the gradual introduction of a national value-added tax and to the exemption of low and middle bracket income receivers from the individual income tax, he said. It would also mean a sharp reduction of the corporate income tax on all distributed corporate profits, he added.

American tax legislation has not been aimed at a general harmonizing of the U.S. tax system with the tax system existing and evolving in Europe, he stated. The differences in the tax systems have placed a strain on the U.S. balance of international payments, Lindholm concluded.

Economics Prof Gets High Position

Paul B. Simpson, professor of economics at the University, has been elected president of the Western Economic Association, the official regional association for economists in the Western United States.

The Oregon Professor was elected to head the nearly 1,000 member association at its annual meeting August 26 and 27, at San Diego State College. He was vice president of the organization last year.

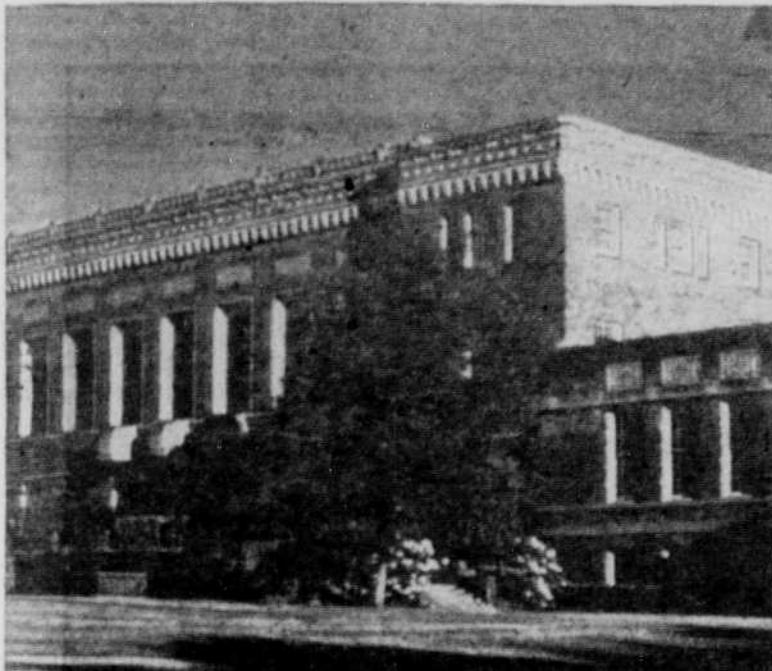
He also served as program chairman for the two day San Diego meeting.

Simpson holds a bachelor of arts degree from Reed College and a doctor of philosophy degree from Cornell University.

Before coming to the University in 1949, Simpson taught at the University of Delaware, Reed College, Cornell University, and Stanford University.

He was economist for the Federal Reserve Board from 1940 to 1943.

Use Emerald Classified Ads—



THE UNIVERSITY LIBRARY is the largest library in the state, housing nearly 800,000 volumes in the main library. Other specialized libraries bring the campus total to about 1 million volumes. Construction is under way on a 85,000-square-foot addition to the library, which will increase its space to over 200,000 square feet. The addition is due for completion in August, 1966.

First Congregational Church

UNITED CHURCH OF CHRIST

23rd Avenue East and Potter
(5 blocks south of campus)

SUNDAY SERVICES
9:30 and 11:00 a.m.

Ministers, Lloyd Stamp and
Wesley Goodson Nicholson

For Transportation call 345-8741

Central Presbyterian Church

15th Avenue and Ferry Street
(2 blocks off campus)

SUNDAY SERVICES
9:30 and 11:00 a.m.

EVERYONE WELCOME
Minister — Norman D. Pott

Student Fellowship — Westminster House
1414 Kincaid

1st Church of the Nazarene

8th and Madison

Sunday School—9:45 a.m.
Morning Worship—10:45 a.m.
Youth Hour—6:00 p.m.
Evening Evangelism—7:00 p.m.

W. Donald Wellman, Pastor

Phone 342-5211

1st Assembly of God

1330 Madison M. W. McLees, Pastor

9:45 a.m. — Sunday School

Attend Chi Alpha College Class — Les Binkley
Transportation Provided Phone 345-3303

11:00 a.m. — Morning Worship

Pastor McLees, Speaker

3:00 p.m. — Pastor's Study

KEZI-TV Channel 9

7:00 p.m. — Revivaltime

Grace Lutheran Church

(Missouri Synod)

17th and Hilyard Street 344-2361

Sunday Worship Services: 8:30 and 11 a.m.

Bible Class for Students: 9:45 a.m.

Harold J. Gieske, Pastor

Norman Metzler, Vicar

First Methodist Church

1185 Willamette 345-8764

9 and 11 a.m.—Dr. Norman Conrad

WESLEY FOUNDATION

Next to the Co-op Bookstore

Robert Kingsbury, University Pastor

9:30 a.m. Sunday Seminar

10:40 a.m. Rides to Church

1236 Kincaid

4:30 and 7:00 p.m. Classes

5:30 p.m. Supper

6:30 p.m. Vespers

First Baptist Church

Broadway at High

11:00 a.m.

Morning Service

7:00 p.m.

Evening Service



345-0341

Orthodox Presbyterian Church

(A Reformed Church)

3350 Willamette Street

Sunday School — 9:45 a.m.

Morning Service: 11:00 a.m.

Evening Service: 7:00 p.m.

Midweek Bible Study and Prayer Meeting — Wed., 7:30 p.m.

For information or transportation call 345-3638

Rev. Glenn T. Black, Home Missionary