

\$1 Million Infirmary Nears Completion

The Student Health Service, now housed in cramped quarters across 13th Ave. from the Student Union, will probably be moving to a building with twice the present space before fall term is over.

Dr. Russell Blemker, director of the Health Service (called just "the infirmary" by most students) hopes that he and his staff can move into the University's new \$1.2 million Health Service building by sometime in November.

The infirmary handles a massive case load—sometimes 200 or 300 students during peak hours, according to Dr. Blemker.

Record Year

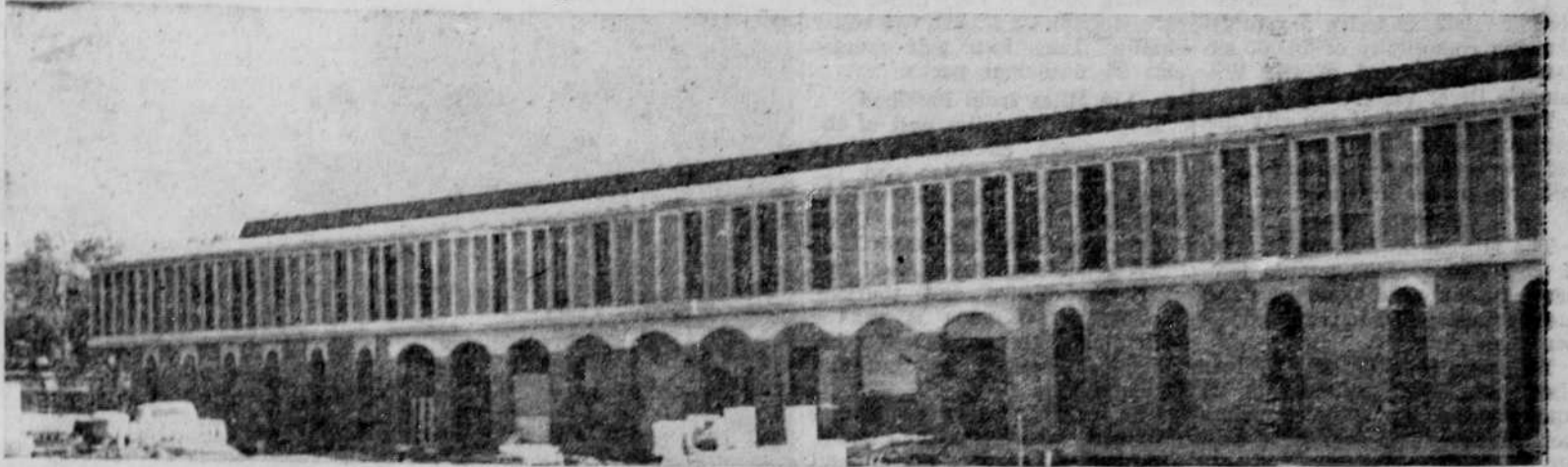
During the 1963-64 academic year, the Health Service set a record by treating 62,000 outpatient cases alone.

He acknowledged that things will be "mighty hectic for a while" during the first of the term when the hordes of new students file into the infirmary to make last minute additions to their health records, turn in physical exam slips and complete other registration duties.

This is not to mention those persons with illnesses who go to the infirmary for help.

Space Lacking

The present infirmary, like some other campus buildings, has been long since outgrown by the student population explosion. Because of lack of space to house needed equipment and treatment facilities, the Health Service has to send some student cases to Sacred Heart Hospital, which is also crowded as Eugene's largest hospital.



THE University's new 37,000-square-foot quarters for the Student Health Service will hold 44 beds, provide modern facilities for everything except surgery.

Dr. Blemker says that the new infirmary will be able to handle "everything but major surgery."

The 37,000 square-foot two-story concrete and brick structure is about double the size of the present building. It is located next to Carson Hall, on 13th Ave.

Built with Fees

Built entirely with student fees, the new infirmary will accommodate 44 beds to start, with room for expansion to hold 20 more. Most of the rooms will be two-bed wards, with four one-bed "isolation rooms" for serious contagious diseases.

The new infirmary will be staffed by eight full-time and two part-time doctors and 13 nurses.

In addition, new members of the staff will include a licensed physiotherapist, a pharmacist and a dietitian. Each will have separate quarters in the new building to offer services not now provided.

Dr. Blemker said that the building is being built to accommodate a student body of 18,000.

Doctors Get Three Rooms

Each full-time doctor will have a suite of three rooms—two examination-treatment rooms plus an office. These, plus the general offices and the pharmacy, are located on the first floor.

The second floor includes the hospital area, the kitchen cafeteria and one of the building's two minor surgery rooms. The structure also has an elevator, unlike the present two-level facility, plus an emergency entrance for ambulances.

Using New Design

Dr. Blemker said that the building is being constructed, using the "new designs" in hospitals—open construction and centralization of services, avoiding long passageways between areas.

Other new features will include equipment for electrocardiogram measurements, added X-ray and fluoroscope facilities, an expanded laboratory, pneumatic tubes to carry messages through the building, a sterilizing apparatus and a central oxygen supply to allow oxygen to be piped into the individual patient rooms.

The facilities of the Health Service are now available to all University students. Drugs, tests and other care is administered free when possible; at other times the charges are well below commercial rates.

After the Health Service moves to new quarters the present infirmary will be used as a facility for the science department. The basement now houses a \$300,000 atomic accelerator, acquired by the department last year.

Professor Writes About Discovery

Graham Hoyle, professor of biology at the University, has reported in "Science" magazine his findings on the nature of the coupling processes, one of the most important unresolved problems of muscle physiology.

The report appeared in a July issue of the weekly magazine published by the American Association for the Advancement of Science.

Hoyle is known for his work in fundamental muscle research. He is currently in Tokyo, Japan for a series of scientific meetings.

With his associates and graduate students, he has been doing research into the control of muscles by the nervous system and the biophysical and chemical processes which result in muscle contraction.

Since January, the scientists have been using the University's new electron microscope, which is 100 times more powerful than an ordinary microscope, to observe the muscle cells of invertebrates.

One basic concern has been to find how the nerve impulse is transmitted to the muscle fibers

of the invertebrates. To this end, Hoyle and his researchers have been observing two systems, the surface membrane and the sarcoplasmic reticulum.

The surface membrane makes pathways into the cells to carry impulses from the nerve ends, and the sarcoplasmic reticulum is a transport system within the muscle cell.

Scientists had previously noted that the surface membranes and the sarcoplasmic reticulum are often in close parallel proximity within the muscle cell. Some had thought that the membranes actually touched in some places.

However, Hoyle discovered something quite different. He found after observing thousands of their junctures, that while the distance between the elements is often very small, an extremely thin sheet of electron-dense material separates them.

Further research will attempt to discover the significance of the relationships among the newly-found electron-dense material, the two elements, and the muscle fibers, for determining how the fibers are stimulated to contract.

Advertisement

Baxter and Hemming of Eugene, Oregon . . . has been designated a GQ Campus & Career Fashion Center by Gentlemen's Quarterly, the fashion magazine for men. As a result of this designation they are in the recently published GQ Campus and Career Annual as an "established source for young men's fashions who stand ready to serve the wardrobe requirements for the young of all ages."

The Campus and Career Annual, out for the first time this month, tells what they'll be wearing at colleges across the country and in the young businessman's wardrobe: what it should include and how it should be worn. Look for a copy of G.Q. Campus & Career Annual in your living organization.

Baxter & Hemming
STORE FOR MEN

GQ / Gentlemen's Quarterly
488 Madison Avenue,
New York 22, N.Y.

Carlson Gets Ed School Post

Richard O. Carlson, associate professor of education at the University, has been appointed head of the Division of Educational Administration, Curriculum, and Supervision of the School of Education.

Paul B. Jacobson, dean of the School of Education, said Carlson would be succeeding Keith Goldhammer, who was recently appointed associate dean of the school.

Carlson will be assuming his new duties when he returns to the campus from Harvard University where he is spending the academic year as a visiting professor.

Carlson is also a research associate in the University Institute for Community Studies and a project director of the University's Center for Advanced Study of Educational Administration.

WELCOME TO DUCK COUNTRY

THERE'S A GREAT NEW YEAR AHEAD . . .
SO WHAT ELSE IS NEW?

The banking service First National offers to Oregon students may be new, especially to members of the Class of '69. We ask you to consider these points:

- Convenience. There is a banking office near you, offering drive-in service, free parking, and practical banking hours.
- Flexibility. Money may be deposited to your local account from any of First National's statewide branches, or we will gladly arrange for transfer of your funds from your home bank.
- Experience. Service to generations of students has made us expert in meeting your particular needs.

Stop in soon for a useful gift (It's a good ballpoint pen—we're not allowed to give away money samples) and a get-acquainted chat. Learning to handle money is part of your education—let us help you with your homework.

University Branch
1380 Villard
Eugene Main (downtown)
West Eugene Branch
Coburg Road Branch
18th & Oak Branch



Member Federal Deposit Insurance Corporation