

Stanford Sigma Chi House Suspended

By BOB CARL
Managing Editor

STANFORD (Special) — Suspended from their national fraternity for one year, Stanford University's Sigma Chi members are determined to sit out their suspension, comply with all of the rules, and live with the first Negro ever pledged by a chapter of Sigma Chi fraternity in its 110-year history.

The Stanford chapter was suspended in April, allegedly for failing to "comply with the ritual, and for not keeping the house clean," one Stanford member chortled.

"We're sure it's just because we pledged a Negro," another brother said, "But we intend to follow all of the stipulations, and see if we are taken off suspension after our one-year term is up next April."

The suspension, originally handed down by the national's executive committee, was ratified by the national convention in June.

Moral Support

John Hansen, dean of fraternities at Stanford and former assistant dean of men and Inter-Fraternity Council advisor at the University, told the Emerald: "The local chapter is not pressing the legal issue. The undergraduates consider it a racial problem and intend to bring it to a head next April."

Hansen said that Stanford Uni-

versity administrators and officials are offering moral support to the Sigma Chi's, but he said he wasn't sure if any financial support had been offered by the university.

He said that two other fraternities on the Stanford campus had "gone local, because of the race problem." Hansen said that Stanford University fraternity members "seemed more independent and more interested in the local chapters than in the national fraternities."

Federal Money

The reason the Sigma Chi chapter has been so strongly supported by Stanford officials is that under existing federal policies, any college or university that has affiliated housing on a discriminatory basis is in danger of losing all federal funds.

Local chapters of Sigma Chi Fraternity are being investigated on several campuses throughout the country, because the fraternity allegedly practices racial discrimination. However, officials of the national fraternity have steadfastly denied the allegations.

In fact, many universities and colleges, as does the University, demand that all Greeks, including Sigma Chi, turn in a written statement from their national offices that say the fraternity or sorority does not discriminate according to race, creed, or national origin. Sigma Chi chapters have cheerfully complied.

However, even as Sigma Chi and other Greek houses are under investigation on their local campuses, the entire system is slowly falling apart—apparently on most campuses in the country. For example, while the University's student population has been doubling since 1955, the number of Greek members has remained almost static.

The problem is even more apparent at other schools.

At the University of California at Berkeley, "the fraternities are almost empty," according to one university official. Only a very small number, about 340 girls, participated in sorority rush on the Berkeley campus this year, out of 27,000 students.

Oregon State University President Jensen admitted at a recent State Board of Higher Education meeting that "the fraternity system hasn't shown any marked growth," and University President Arthur Flemming concurred when talking about Greeks on his campus.

At Stanford, however, university officials appeared optimistic about the future of fraternities on campus. Hansen said that about 500 new men were pledged during last spring's formal rush.

There are no sororities at Stanford.

At San Jose State College, the largest of California's state colleges with 20,000-plus students, officials were not saying much about the Greek system. "We expect another good year," one person said, "but we have no idea whether or not the Greek houses will be full this year. They always hope so," she smiled. So, even though lack of hous-

ing is a pressing problem on most campuses, fraternity and sorority housing seems to be in less demand. As one Berkeley student said: "Fraternities are the only houses in town that are empty."

KEZI ABC TV

turn on the Sports

Cas' Corner is back for a 2nd big year. Get the inside story of DUCK FOOTBALL for 65-66 with Oregon Coach Len Casanova and Channel 9 Sports Director, Bruce King.

Tuesdays at 7 p.m. Ch. 9

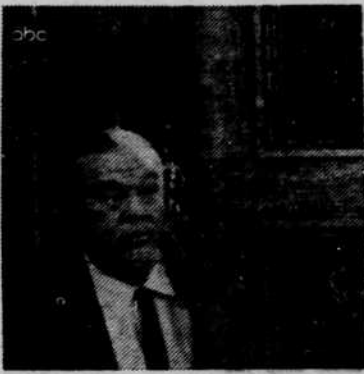


turn on the Hillarity

O.K. CRACKERBY! BURL IVES STARS AS THE RICHEST MAN IN THE WORLD, LISTED ON THE STOCK EXCHANGE, BUT NOT IN THE SOCIAL REGISTER. WHEN THIS DIAMOND-IN-THE-ROUGH SETS OUT TO CRACK HIGH SOCIETY, YOU'RE IN FOR A MILLION LAUGHS.

In Color

Thurs. 8:30 p.m. Ch. 9



turn on the Music

THE HOLLYWOOD PALACE HOST BING CROSBY OPENS ANOTHER EXCITING NEW SEASON OF TOP-NOTCH VARIETY ENTERTAINMENT! HEADLINERS TONIGHT ARE CATERINA VALENTE, TIM CONWAY, AND THE NITWITS.

In Color

Sat. 9:30 p.m. Ch. 9



turn on the Action

THE FBI SPELLBINDING STORIES BASED ON CASES IN THE FILES OF THE FEDERAL BUREAU OF INVESTIGATION, LINKED WITH THE PERSONAL DRAMA OF ITS AGENTS. STARS EFREM ZIMBALIST, JR.

In Color

Sun. 8 p.m. Ch. 9



Use Emerald Classified Ads—

IT'S STUPENDOUS

D.Q. 5c Sale

See Ad
Page 3

Why can't 1 full carat total weight diamond rings have sleek and trim settings like the modern, popular diamond styles of today?

They do at Zale's!



ONE FULL CARAT OF DIAMONDS TOTAL WEIGHT

Six bright diamonds total one full carat in this exquisite wedding set, mounting of 14K gold.

\$289



Slender, elegant styling combines with seven fine diamonds totaling one full carat in this 14K pair.

\$299

See our complete collection of "Tempo" contemporary diamond designs, starting with 1/4 carat at \$89. Convenient terms.

Prices plus tax

Illustrations enlarged to show detail

ZALE'S JEWELERS

110 West Broadway

Eugene

FABULOUS DISCOUNTS

ON YOUR FAVORITE

RECORDS

| | |
|--------------|-----------------|
| 3.98's | 2 ⁹⁸ |
| 4.98's | 3 ⁹⁸ |
| 5.98's | 4 ⁹⁸ |

Every Great Label Featuring All Top Artists

Why Pay More?



SHOP

The Old Mill Dept Store

and

Mark's Tradin' Post

303 S. 5th

Shop daily 9-9 — Sunday 11-6

Springfield