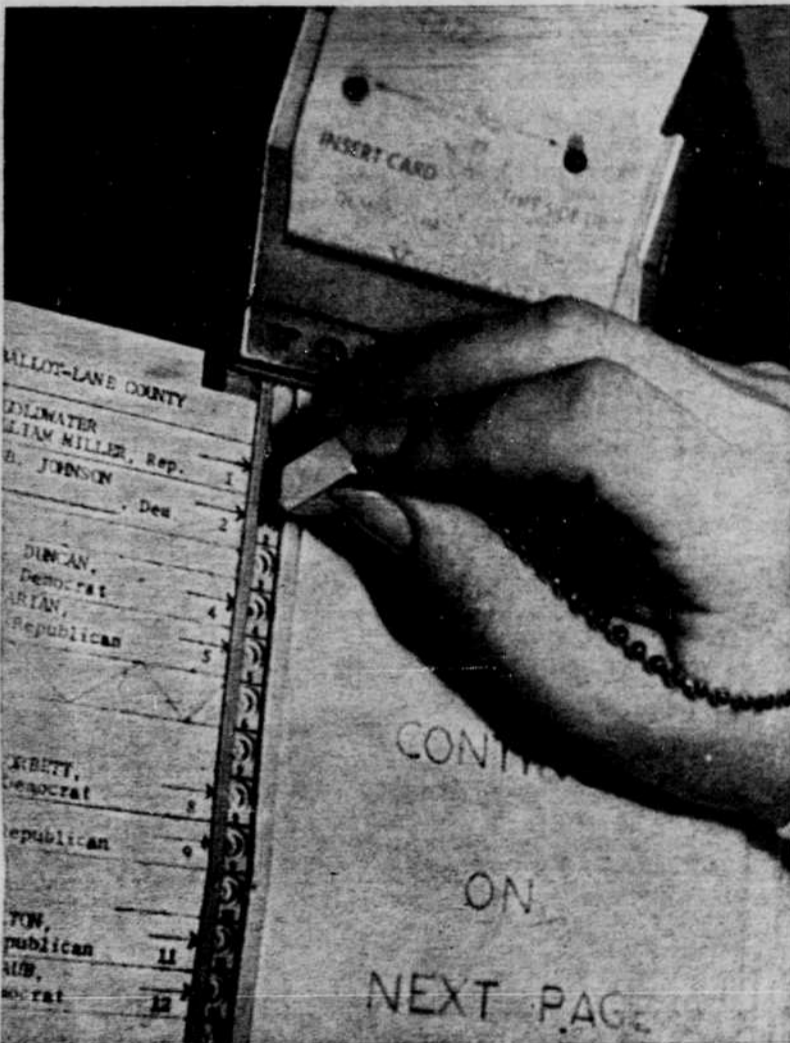


# Mock Presidential Election Set Today



STEP ONE—To vote on the Votomatic, insert the IBM card all the way into the new electronic device.



STEP THREE—Using the Votomatic stylus, vote for your choice by punching firmly the hole indicated. After you have voted, present your ballot to the inspectors, who will place it in the box.

## New Machines Used in Voting For First Time

The first day of the Oregon Daily Emerald — KUGN Radio mock presidential election commences at 8 a.m. today, when polls open at the Student Union. The election will be the first on campus to utilize the Harris Votomatic, a new voting device designed to simplify and speed-up the election process.

All faculty, staff and students will be eligible to register their preference in the mock election. There will be no requirement that the voter be registered. Students will present their student body cards for stamping, and faculty and staff members will have their names crossed off a personnel list to eliminate double voting.

The ballot will call for votes for President of the United States and for or against abolishment of capital punishment. The balloting will be secret, and conducted, for the most part, as a regular election.

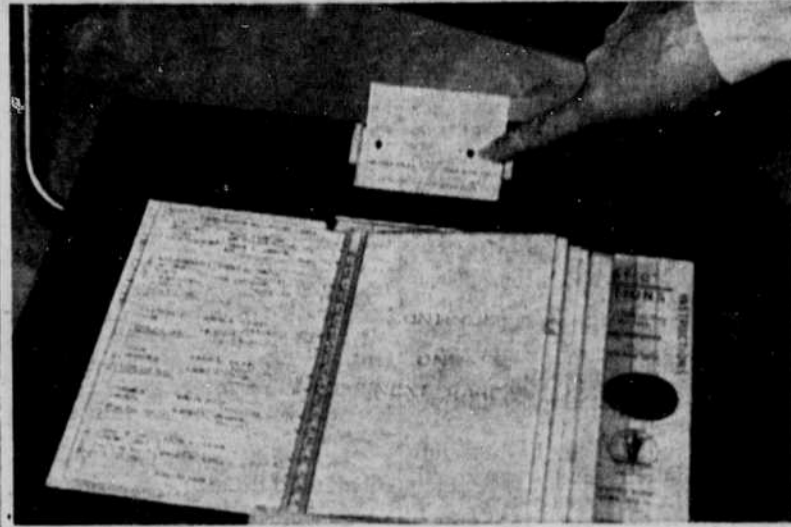
The new Votomatic, which will make its first appearance on campus, has received notice by several top Oregon administrators. This Nov. 3, the devices will be used in 10 Lane County precincts.

The Votomatic is based on an IBM card approach to balloting. Through the use of computers, these IBM Ballots can be processed immediately and provide almost spontaneous election results. In addition to cutting tabulating time and costs, the system eliminates practically all chance of error.

The mock election will be held from 8 a.m.-5 p.m. today, and 8 a.m.-4 p.m. tomorrow. Expected turnout is estimated at 3,000 voters. If this goal is reached, it will mark the largest Votomatic mock election use.

YR and YD members are asked to serve as poll inspectors. Any members not already scheduled may come to the polling place any time to make arrangements. Other interested students are needed to work.

Six voting devices will be used for the election.



STEP TWO—Make sure holes at top of IBM card fit over the two red prongs on the Votomatic. The IBM card indicates which side should be up.

## YM-YW Teacher Program Set

Students who have the desire to serve the community through the University YMCA - YWCA Teacher Aid Program are invited to attend a general orientation meeting at 7 p.m. Thursday in the YMCA office, 318 SU.

The Teacher Aid program, now in its second year, is designed to give those students interested in education the opportunity to use their talents in a productive manner even though they are not education majors.

The program will begin at Roosevelt and Wilson Junior High Schools. Four persons are needed to work in physical education with two classes for mentally retarded children at Wilson Junior High three times a week.

Roosevelt Junior High has indicated a need for assistance in the science, math, English (literature and writing) and reading

fields. Time loads will be determined by the volunteer and the participating teacher.

Those unable to attend the general meeting may make application at the YMCA office Thursday.

### STUDY MASTER PREPOSTEROUS PERSONALS

\$25 FOR EACH PREPOSTEROUS PERSONAL used in our advertising. Must be based on any of 93 Study\*Master titles. Open to students and faculty. Sorry, can't return unused entries. Send your entries to Study\*Master Publications, 148 Lafayette St., N. Y. C. 10013.

OFF-B'WAY GROUP wanted by Danish nobleman for personal dramatic production. Inquire Box H270, Elsinore Castle.

ACTION-PACKED VACATION for limited group young boys, 7-13. Small island, varied program, memorable experience. Write WTG, Box LOTF451.

STUDENTS find Study\*Master Critical Commentaries, Chapter Notes, Poetry Reviews and Drama Analyses valuable study aids. Study\*Master's clarify meanings, aid comprehension, speed report writing, supply meaningful reference, add to reading enjoyment and improve grades.

\$1 at your College Book Store.



**TYPE TODAY with the FAST Typing-Tutor System**

A new TEACHING MACHINE that is guaranteed to help you learn to touch type in amazingly LESS TIME. There are NO LESSONS to take—just fit the TYPING-TUTOR over ANY typewriter and IMMEDIATELY begin touch typing. This new teaching device makes certain each finger feels the correct keys to touch WITHOUT LOOKING. Begin typing lecture notes, reports, etc. IMMEDIATELY with the amazing TYPING-TUTOR. Excellent for students of all ages. \$2.95 ppd. TYPING-TUTOR, 639 Enchanted Way, Pacific Palisades, Calif. (TYPING-TUTOR pat. pend.)

## Death Penalty . . .

(Continued from page 1) the state supreme court and the governor.

A penalty of death would then only be accepted if a psychiatric examination and a probationary report indicated the criminal could not be rehabilitated. Such a system results in the execution of only one-third of the convicted murderers facing the death penalty, Pollit reported.

The panel also reached agreement that most murders are "crimes of passion" resulting in the death of someone dear to the criminal. "These criminals would not commit murder again if set loose immediately. It is only the cold-blooded murderers who are executed," Pollit remarked.

"The death penalty creates an allusion that we're dealing with a problem, which we're not," Clark stated in closing. "Capital punishment is not a major problem of criminal law. It is more darn trouble than it is worth and is expensive in the administering of justice."

He added that the burden of the problem should be put to the advocates of capital punishment, and to have them state why we should retain the death penalty.

## Letters . . .

(Continued from page 2) about only because of books. No, in his era where we are living, the Congo, Berlin, Vietnam, or any other place, has become more important for us, than Boston was to the inhabitants of the frontier in the 1770's. What I want is to live in a society that will flow freely, like the Moselle.

Raul Soto-Seelig, Senior in Economics.



We all make mistakes . . .

### ERASE WITHOUT A TRACE ON EATON'S CORRASABLE BOND

We can't be on perfect key every time, but typing errors needn't show. And won't on Corrāsable...Eaton's paper with the special surface that comes clean in a whisk with an ordinary pencil eraser. There's no smear or scar left in evidence when you type on Corrāsable.

Your choice of Corrāsable in light, medium, heavy weights and Onion Skin. In handy 100-sheet packets and 500-sheet boxes. Only Eaton makes Corrāsable.



A Berkshire Typewriter Paper

EATON PAPER CORPORATION PITTSFIELD, MASSACHUSETTS

BUY EATON PAPER at the CO-OP SUPPLY STORE



Come 'n Get It!

## ARCTIC CIRCLE SPECIAL

### NEW "T" BURGER

HERE'S WHAT YOU GET

- LETTUCE - TOMATO - DILL PICKLE
- OUR SPECIAL HAMBURGER SAUCE

Phone Ahead For Orders

ALL FOR ONLY

ARCTIC CIRCLE DRIVE-IN

19¢

ORDERS TO GO OUR SPECIALTY

Noma and Bob Smith Welcome You Just Phone 342-3524

Broadway at Ferry

Open 11 a.m. to 1 a.m. Fri. & Sat.