

# Means EXPANSION

## *Played an Important Part In the Rapid Build and Equip Your Dorms*

### MANLEY PLUMBING & HEATING

565 West 4th DI 4-9031

### COMMERCIAL TILE CO.

2450 Pacific Highway DI 3-6313

### JOHN WARREN HARDWARE, INC.

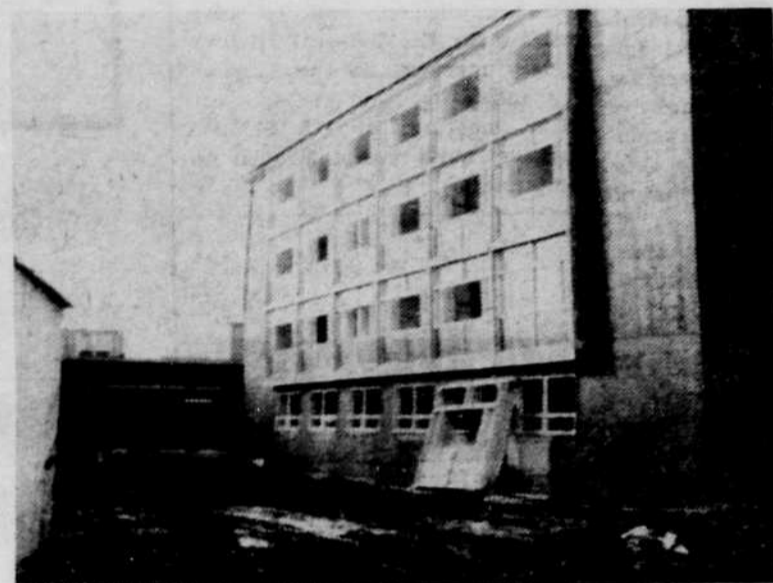
771 Willamette DI 5-3353

### WALDO S. HARDIE & SON

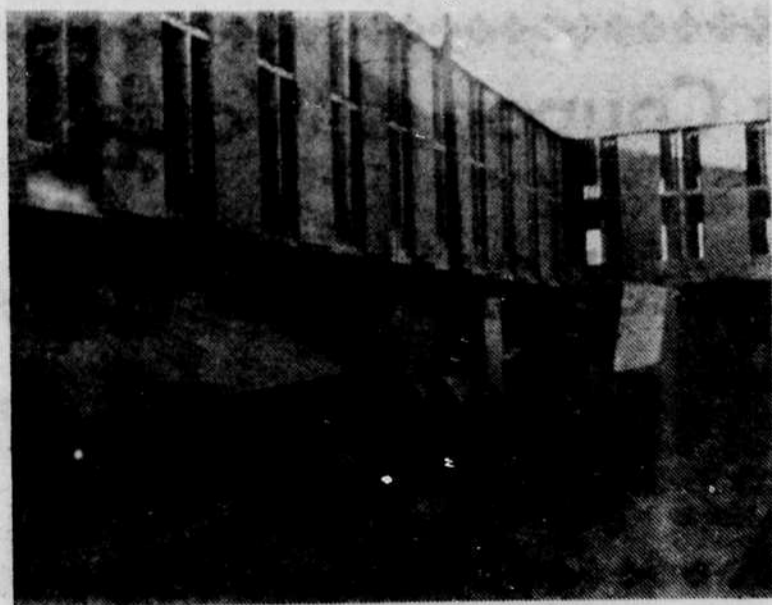
*General Contractors*

305 Taylor DI 4-5424

We just completed dorm 4 and we will complete dorm 5 in September



Second half of Hamilton nears completion.



Workmen carry fiberboard for another new University dorm.

### ATLAS EQUIPMENT COMPANY and ATLAS SHEET METAL

4215 West Willamette Ave. Portland

(STAINLESS STEEL CUSTOM BUILT EQUIPMENT)  
(WE ARE EQUIPPED TO HANDLE ANY SIZE JOB)

### EUGENE SAND AND GRAVEL

700 8th Ave. East

(WE APPRECIATE SUPPLYING MATERIAL FOR  
OREGON'S FINE NEW BUILDINGS)

### RUBENSTEIN FURNITURE

(FURNITURE SHOW-PLACE OF OREGON)

Phone DI 3-1621