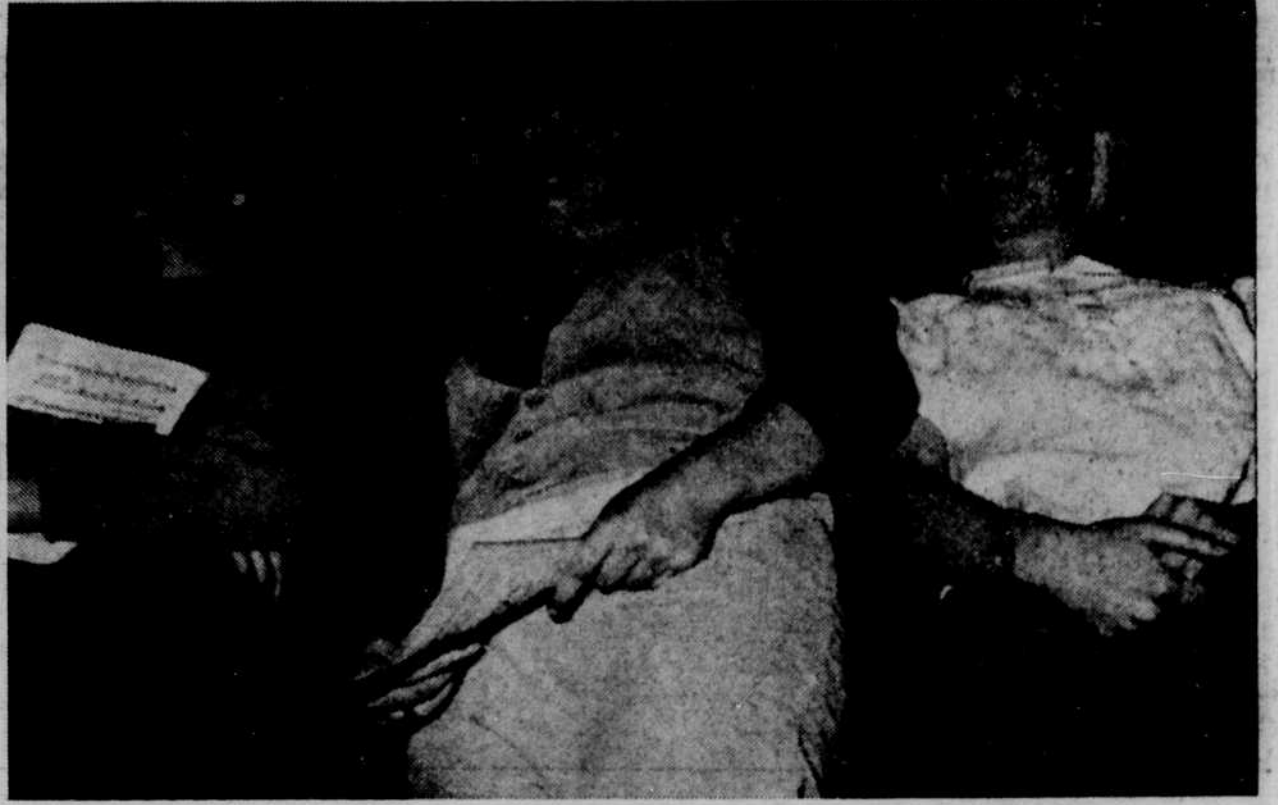




... props ...

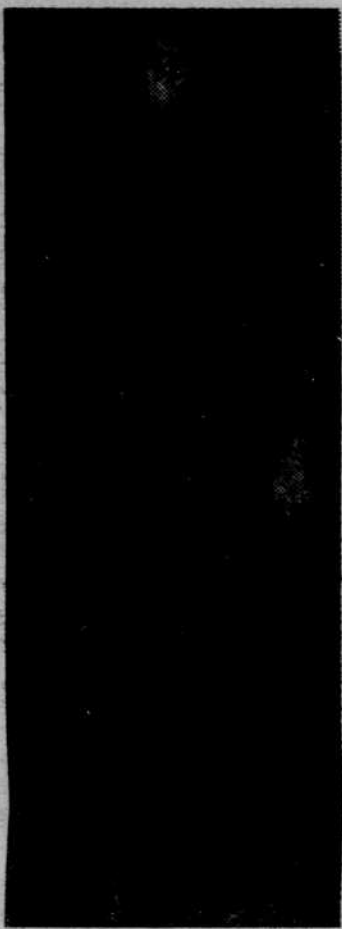


... Chorus ...

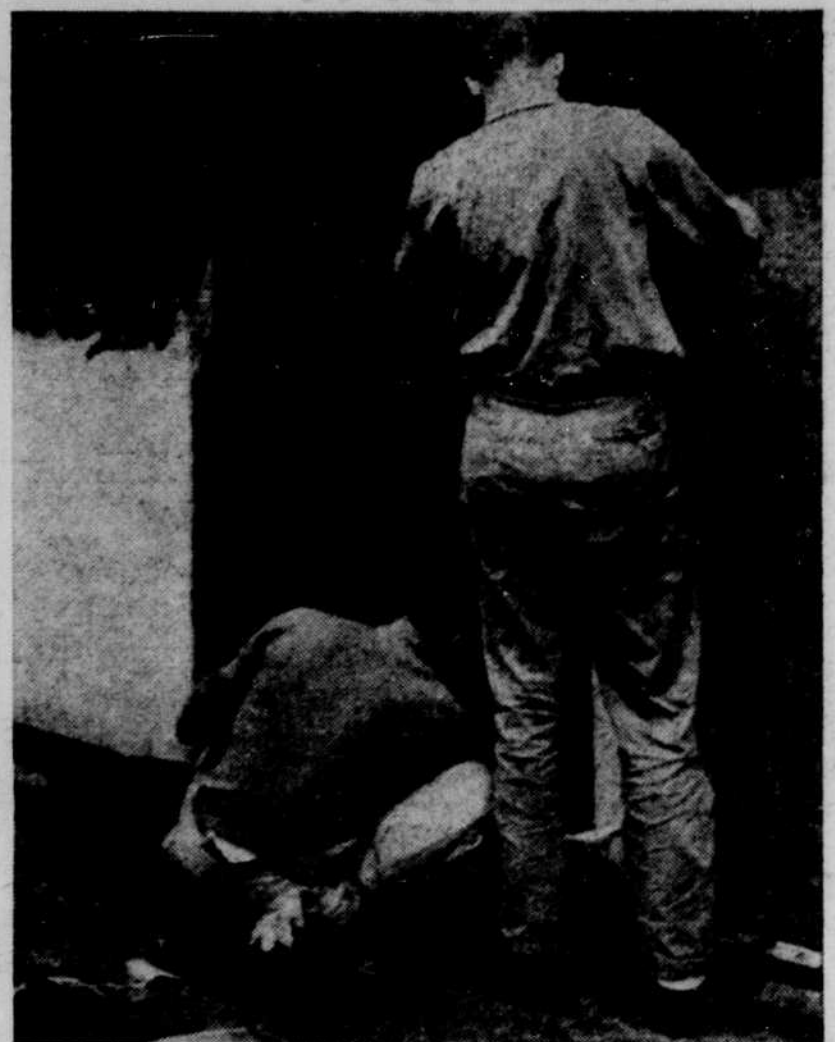
The Play's the Thing

Phots by GEORGE MOSHER
Emerald Photo Editor

With the opening night rapidly approaching, the cast and crew of "The King and I" are busy whipping things into shape. When opening night arrives the audience will see the show and leave filled with enjoyment from the performance. Many, however, will not realize that the cast and all-important back-stage crew have lived, breathed, and slept the play for weeks. Each day they have gone through a full day of classes and then trooped over to the UT to put in four or five hours of practice and work. Their efforts are the labors of love, for only a love of the theatre could induce these individuals to devote so many of their waking hours to the play. Ask any of them if it is worth all the trouble and they'll say the play means everything.



"Simon of Lagree"



... painting set ...



"Run ... Run ... Run"



Reward for sacrifices



Lines, Lines, Lines



Finals ??



"King's head must always be higher!"