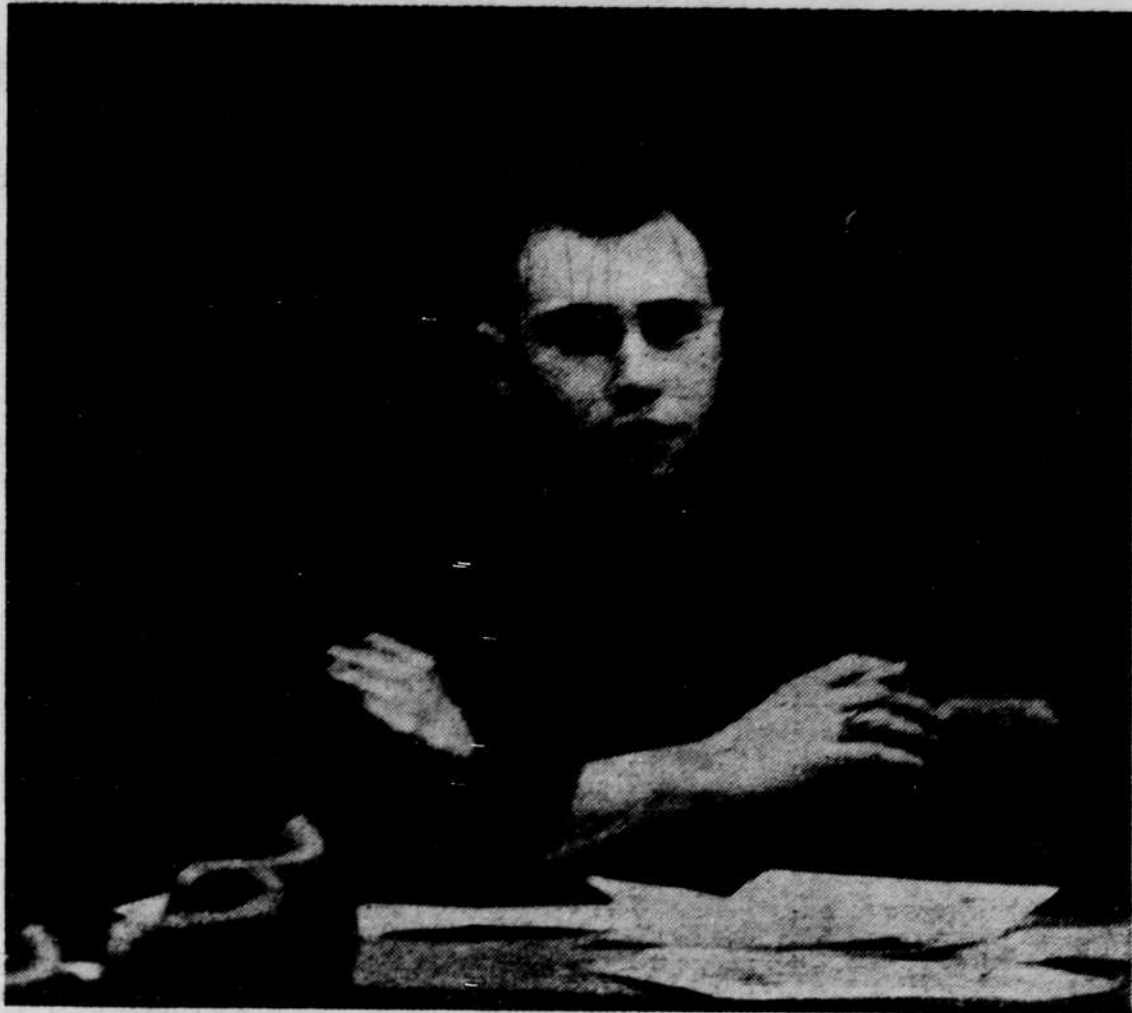


Index	
Campus grade list	3
Foreign student feature	6
Remember When	5

Grebe selected ASUO president



NEW ASUO PRESIDENT Walt Grebe will replace Gary Gregory as the University's student body leader. Grebe, the former senior class president, was chosen over ASUO Cabinet member Jim Ross by vote of the Senate.

Senate picks senior to replace Gregory

By SUE HUNTER
Emerald Staff Writer

Walt Grebe, senior class president, was named new ASUO president by the Senate Thursday night. Grebe, a member of Phi Gamma Delta, was chosen in secret ballot over Jim Ross, Inter-Fraternity Council Cabinet representative.

The Senate also discussed setting up a line of succession to the presidency, as well as official designation of a new Winter Carnival co-chairman, and voluntary ROTC.

The Senate, in selecting Grebe, acted on the opinion of the Constitutional Committee that it would interpret the

Constitution, Article V, Section III, Clause six, to "impose a mandatory, non-delegatable duty" on the Senate to fill the office.

The committee added that it did not feel that it was the intention of the drafters of the Constitution that the vice-president take over.

Peter Wengert, ASUO vice-president, had stated earlier that he would not take the presidency under any circumstances, and that if the Committee decided that he should succeed, he would resign.

THE SENATE voted unanimously that the president be selected from Senate or Executive Cabinet members nominated by the Senate. The motion was made by Kent Hughes, sophomore representative.

Alternatives included petitions from the student body, petitions from the Senate, leaving the office vacant, and establishing a logical line of succession to the presidency.

According to Wengert, the Constitution Committee would interpret a campus-wide election to

(Continued on page 5)

Simmons sets kickoff speech for RE week

Rabbi Marcus S. Simmons will discuss "The Solution to Man's Predicament" in the Student Union Ballroom Sunday at 8 p.m., to launch Religious Evaluation Week at the University.

SCHEDULED AS the keynote speaker in the annual R.E. Week, Simmons is the spiritual leader of Temple Beth Israel in Eugene.

He is a native of London and a graduate summa cum laude from the University of London and Oxford University. The rabbi has served as Rabbinic specialist and assistant to the professor of Hebrew and Semitic languages and literature at the University of South Wales.

He holds membership in the Oriental Society of Glasgow University in Scotland and the Central Conference of American Rabbis.

FOR 20 YEARS the rabbi led the interfaith Council of Christians and Jews in Glasgow. He has also headed congregations in the California cities of Fontana, Modesto and Chula Vista.

Simmons lectures on college campuses under the auspices of the Jewish Chautauqua Society, an organization which creates better understanding of Jews and Judaism through education.

Personal conferences with the rabbi may be arranged by contacting the co-chairman of R.E. Week, Karmen Dammrose or Mary Grinnell.

Music conference scheduled today

The ninth annual Conference on Music Education for Oregon high school and college teachers of music begins today at the University School of Music and runs through Saturday.

ALFRED DUFFY, of the Portland Symphony Orchestra, will head the cymbal and base drum clinic. "Enriching the Elementary Curriculum" will be presented by Louise Grast, composer and lecturer from Pasadena, Calif.

Milo Hovey, educational director of H. and A. Selmer, will speak on "The Motivation Factor in Developing School Bands." Oregon College of Education is

(Continued on page 3)

AWS Board explains definition of 'campus'

Recent ruling on the definition of a "campus" by the newly formed AWS Board of Reference was explained to the AWS Legislature Thursday by Board Chairman Molly Burke.

THE BOARD recommended that a "campus" be defined by house mothers and counselors as: "Confinement of a girl to her living organization from 7 p.m. until the following morning. She may not receive callers, or make or receive telephone calls unless they are long distance. Living organizations may supplement this ruling, but may not supercede it."

The chairman urged all living organizations and dormitories to comply with the definition because students have complained that a lack of a uniform campus oftentimes results in unfair punishment.

Miss Burke said the Board, in a future meeting, would discuss times for a campus, whether they can be taken during the week or limited to weekends.

THE REFERENCE BOARD also recommended to Junior Panhellenic that pledge classes be discouraged from planning slumber parties or large group gatherings in Eugene homes.

In other business, AWS discussed elections and set campaign rules for the forthcoming election.

The constitutional amendment that would merge AWS and Heads of Houses, plus election of a president, secretary, treasurer, editor, and historian of AWS will be put before all women on a campus-wide vote during "Women's Week" Feb. 22-26.

Also during Women's week, the YWCA and Women's Recreation

Association will elect new officers.

JANET LEWIS, chairman of the AWS Scholarship Board, summarized results of a recent grade survey. According to her report, women's grades average about the same as they did last year.

Last year 22 per cent of the total freshmen women were below a 2.0 GPA for Fall term. Fall term, this year, 27 per cent fell below a 2.0. Last year 14.4 per cent of all women were below a 2.0, as compared to 14.5 per cent this year.

According to the survey there was a .0003 variance in pledge class grades this year and last year.

PART OF THE TALK that women's grades were lower this year than in the past was a result of the extreme variance in high and low grades," said Miss Lewis.

Mrs. Golda Wickham, Dean of Women, backed Miss Lewis' comment by saying, "There were more high grades and more low grades than usual, but as a whole, the women did very well."

Student opera scheduled tonight

The opera "Hansel and Gretel" will be performed tonight at 8 in the School of Music auditorium by an all-student cast.

The three-act opera is an abridged version of the original and will be sung in English. Edward Zambara, head of the opera workshop, will direct the opera.

Roberta Clemens will take the role of Hansel and Anne Temple-

(Continued on page 6)

World News IN BRIEF

Rocket hits target

WASHINGTON (AP) — The Pentagon said today that "from information at hand, the Russian rocket apparently did fall within the impact area" the Soviet Union had defined in its advance notice of Wednesday's test firing into the central Pacific.

Missile Master ready

SEATTLE (AP) — The nation's first production model Missile Master went into operation at Ft. Lawton Thursday as the split-second control system for a dozen Nike batteries with the distant early warning DEW line in the arctic.

A-bomb site prepared

PARIS (AP) — The French government announced today a total ban on air flights over a big area of the Sahara — preparatory to the explosion of an atomic bomb — will go into effect immediately.

Smallpox hits Moscow

MOSCOW (AP) — Wholesale vaccinations against smallpox are under way in Moscow in the wake of the death of a Russian artist, A. A. Kokoryekin, from that disease.

Kokoryekin died in a Moscow hospital after returning from a visit to India. A number of other persons were infected before his ailment, evidently of a relatively virulent type, was diagnosed.

Frosh snowball slated Saturday

"Winterlude" is the theme for the frosh snowball, which will be held Saturday evening from 9 to 12 in the Student Union ballroom. The dance, an annual affair for freshmen and their dates, will be highlighted by the crowning of Jack and Jill Frost during the intermission.

WALLY HEIDER'S band will be featured at the dance and Cam Kleeb and Ed Collier will provide the entertainment for intermissions. Voting for Jack and Jill Frost will be from 9 to 10 at the dance. The finalists for Jill Frost are Lee Coffey, Jody Raymond and Connie Wilson.

Final candidates for Jack Frost are John Cavanaugh, Dick Pecie and Jeff Ward. Pictures of the finalists are posted in the SU.

KEN SMITH is general chairman of the dance. Co-chairmen for decorations are Mary Alden and Sally Peets. The dance is semi-formal. Bids are free and may be obtained from the dorm presidents. Women who are taking upperclassmen to the dance must get their own bids.

Freshmen are asked to help decorate the dance at 10 Friday evening and at 8 Saturday morning. Volunteers for cleanup from 9 to 12 Saturday morning are also being called for.