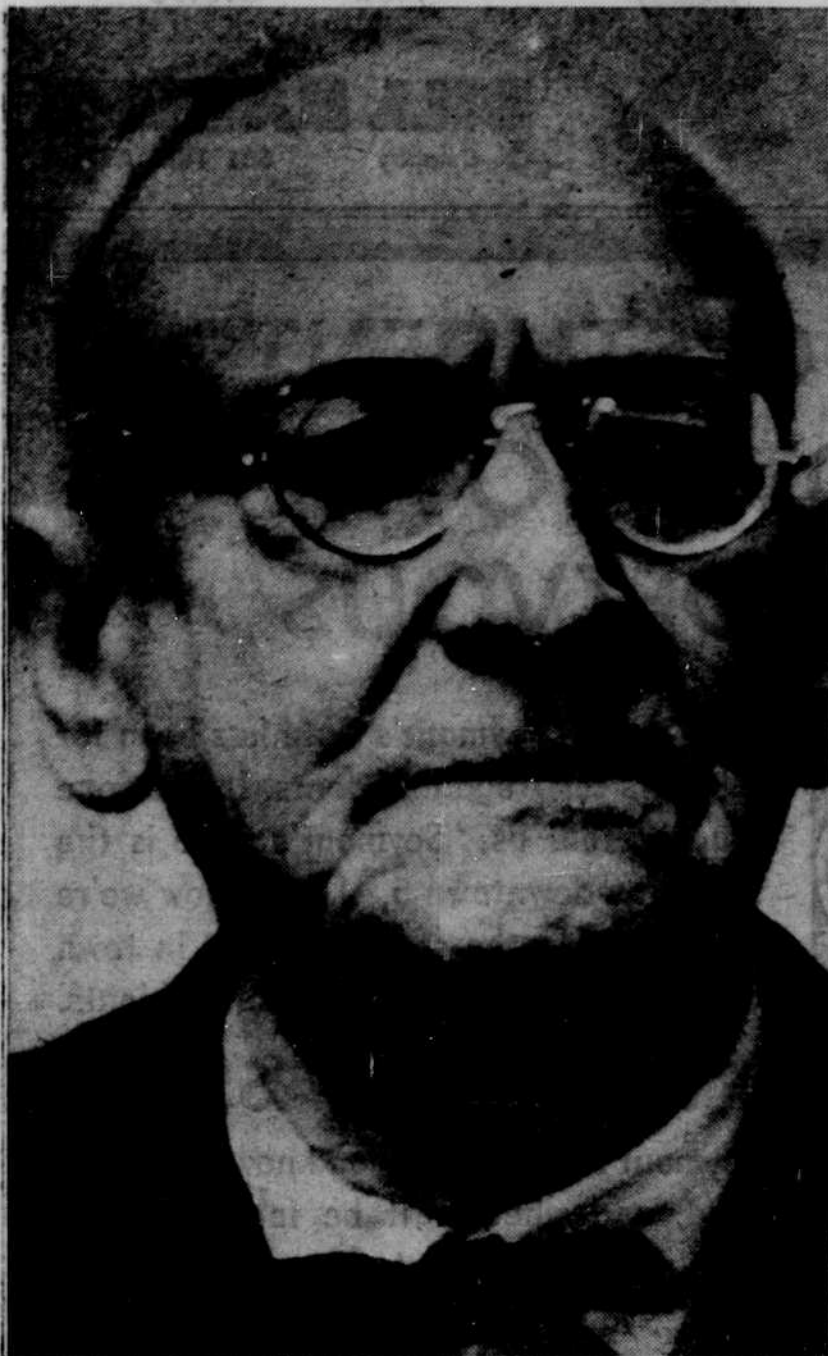


**RUDOLPH E. KLEINSORGE**  
 "His career has been an inspiration to fellow citizens"



**LAWRENCE THOMAS HARRIS**, University graduate in 1893 has been a member of the Oregon bar since 1896. He also served as speaker in the Oregon House of Representatives; Harris is to receive a Charter Day citation for outstanding service to Oregon.

### Charter Day . . .

(Continued from page 1)  
 Walter Gordon will present the citation.

Harris, a graduate of the University in 1893, has served as speaker of the Oregon House of Representatives and associate justice of the state Supreme Court. The graduate of the University of Michigan Law School is still practicing in Eugene. Harris' citation will be presented by Orlando Hollis, dean of the University School of Law.

Kleinsorge was a member of the State Board of Higher Education for 20 years before his retirement this year. He also served as president of the Board and was chairman of the group's building committee. Kleinsorge is known for his contributions to floriculture. Dean of Administration William Jones will present the citation.

The benediction will follow the "Oregon Pledge Song" by the University Band and Singers. The Reverend Clarence J. Forsberg of the First Methodist Church in Eugene will give the benediction. The recessional will be Mendelssohn's "March, Opus 103."

### Campus Briefs

- There will be a meeting of Homecoming Committee chairmen Wednesday at 4:00 in the SU. The room will be posted.
- The Recorded Classics Committee is sponsoring "An Evening of Music by Russian Composers," featuring the music of Moussorgsky, Rimsky-Korsakov, Tchaikovsky and Rachmininoff Thursday at 7:30 p.m. in SU 202.
- Mortar Board will meet in the lobby of the SU today at 2 p.m.
- All students interested in skiing will meet at 6:30 in 138 Comm. Movie will be shown.
- Petitions are due Friday for Homecoming music parade subchairman.
- Senators can pick up agendas for Thursday's Senate meeting in the ASUO president's office this afternoon.
- Ruth Havlik, national editor of the Mu Phi Epsilon magazine, The Triangle, will visit the University Thursday and Friday to meet with members of the local chapter, who present a short musical program. Mu Phi Epsilon is a national music honorary, which has been at the University since 1911.
- Due to Charter Day activities, women's recreational swimming will be from 7:00-7:45 p.m. only.
- Petitions may be filed for copy editor of the Oregana. They are due Monday at 5 p.m. in the SU box on the third floor. No freshmen are eligible. For questions call the Oregana office.
- "Frosh 100" will meet Thursday at 4:00 p.m. in the SU. Room will be posted.
- Reminder—televised Health 150 mid-term 7:30 p.m. Thursday in Villard 104 for textbook group.
- Askelpiads will meet Thursday at 6:30 p.m.

## Classified Ads —

### SERVICES

**PHOTOGRAPHS**—House groups and activities. The Feily Studio DI 4-3432.

### TUTORING

**HIGH SCHOOL MATH** and College Algebra. Limited. DI 5-4705.

### WORK WANTED

I will do typing in my home 3325 Kincaid. DI 3-3813.

### HELP WANTED

Skipworth Detention Home is recruiting for a "live-in" man. Compensations. Full room and board. No salary. Requires being on premises 5:00 p.m. to 10 p.m. Monday thru Friday to assist house parents vocationally as needed. Age 21 or over. Call Mr. Likowski. DI 2-1311, Ext. 394, 8:00 a.m. to 5:00 p.m.

### SKIPWORTH HOME

400 Patterson Rd. Eugene

You CAN Learn in Your Sleep. Retentive memory, concentration, self-confidence, physical well-being, languages, music, etc. Representatives wanted. Eric Allen. DI 4-5663.

\$75-\$150 a week being averaged by college men and women showing Winfield China by appointment. Nationally advertised. High consumer acceptance. Absolutely no canvassing. Thorough training and supervision. Reputable local concern. DI 4-1321.

### FOR SALE

#### PORTABLE HI-FI PHONOGRAPH

4 Speed, 3 Speakers. Made by Voice of Music, 1½ years old. Cost \$110, sacrifice for \$50. Excellent condition. Can see and hear at the Emerald, 301 Allen Hall.

Used Westinghouse electric range in good condition. Call RI 6-2168.

**GIBSON DELUXE** double oven electric range, excellent condition. Phone DI 4-8307.

### FOR SALE

1959 VESPA Motorscooter. 1561 Ferry Street, apt. 4. DI 5-8406 after 5 p.m.

AMERICANA Encyclopedia set with bookcase. \$99, or best offer. DI 5-9916.

Equity: 1955 CHEVROLET Tudor FULL HOUSE. Owner leaving for service. Call DI 5-0208 after 12 noon.

### VESPA SCOOTERS

Economy and convenience. As low as \$85 down. Windshields and canopies available plus a complete line of other accessories.

**ROBERTSON & PERRY CO.**  
 1265 Willamette  
 Volga - Vespa Sales - Service  
 DI 4-1334

1941 Chevrolet with '51 motor. \$150. DI 3-7464.

### AUTO REPAIRS

STAINLESS STEEL Chrome Face

## PISTON RINGS

- More Power
- More Gas Mileage
- 30,000 Mile Guarantee

INSTALLED as low as

**\$40**

(Labor)

Terms Loan Cars  
**THRIFTY AUTO REPAIR**  
 940 Pearl Street DI 3-7114  
 After 6 p.m. DI 3-5997

### ROOM & BOARD

AVAILABLE NOW — Single Board and Room for student. 1410 Moss St. DI 3-5987.

### RENTALS

TWO NICELY FURNISHED bedrooms in clean, quiet home. One single bedroom and one double. Call DI 3-7375.

SINGLE OR DOUBLE ROOM and board. New furnishings. 475 Sunnyside Drive.

## What's this push-button world coming to?

"I've always thought the service at the Anchorage was good . . . but NOW . . . with the new electronic ordering system it's twice as fast," says Jim Dutcher, B.B.M.O.C. (Big, Big Man On Campus). "Not only do you get fast service (just push a button and give your order) but you still get the same top quality food . . . burgers, fries, shakes, and so forth . . . that has made the Anchorage famous among the college crowd."

Why not join me this evening for a study break at

# The NEW ANCHORAGE Drive-In



Right across the highway from Villard Hall.

The Anchorage, giving you the best of service and food from 11 a.m. 'til midnight.

## SHISLER'S FOOD MARKET

OPEN 7 DAYS A WEEK—9 A.M. to 11 P.M.

- BEVERAGES • MIXERS • ICE CUBES
- MAGAZINES • MEATS • FRESH PRODUCE

13th at High Street

DI 4-1342