

Injuries worry Casanova as Webfoots await contest

By BOB MULLIN
Emerald Sports Editor

Len Casanova finished the work at his desk in his Athletic Department office. In a few moments he was to journey to the practice field to put his Oregon football team through its Thursday afternoon drills for the Oregon State game at Corvallis Saturday.

Before he left, however, he spoke shortly with this writer.

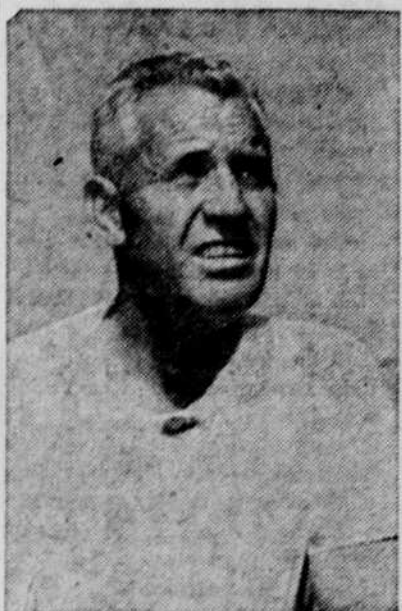
A grim look crossed his face when asked about the team's injuries. "(Charlie) Tourville is out for sure," he said, lifting his eyes from the papers in front of him on the desk. "(Ron) Stover says he wants to play; he's not in very good shape, but he'll see action."

Tourville had reinjured his leg in Oregon's 7-3 loss to UCLA last week and Stover hasn't played since the California game four weeks ago. Cas added that quarterback Sandy Frazer was doubtful and that guard Joe Shaffeld wouldn't be up to full strength.

Of Oregon State, Casanova noted: "They've been beating teams that have beaten us. And they've recovered from their injuries while we haven't."

The Ducks dropped Pacific Coast Conference games to California, Washington and UCLA. All three of these teams lost to the Beavers. And reports from OSC Publicity Director said that not one Beaver griddler was definitely not going to play.

"We're far below starting potential," the grey-haired veteran of eight Oregon seasons went on. "Stover's a threat when he's in there—even when he's not catching passes, he's a threat. And Tour-



LEN CASANOVA
"Injuries hurt us"

ville too. They added worries to opposing team."

When asked about the difference between this year's club compared to last year's squad that nearly upset Ohio State in a 10-7 loss in the Rose Bowl, Casanova said, "We've been an unfortunate team this year."

He rose from his seat. "Last year when we needed four yards, we just made it; this year we're getting three and a half. Last year we caught the important pass; this year we drop it."

"Of course we miss (Jim) Shanley and (Jack) Morris" in the backfield," he added. It was Shanley and Morris that combined to give the 1957 Webfoots the best one-two running combination in the school's history.

Cas noted that injuries have hurt this year's UO eleven too. "When we had everybody in

there, we did a good job, but we aren't deep enough to fill in for the injuries we've had this year.

"Many replacements didn't get the experience in Spring Practice this year," Casanova referred to the junior college transfers who didn't enter the University until this fall.

A grim look crossed Casanova's face. "The kids have really worked hard for this game," he said. And this in spite of the bad breaks.

One more question, Cas. Do you want to win this one? "You bet we do!"

GAS-TOONS



"I wonder what that attendant was yelling about as we pulled out of the station?"

The one thing you will take away from here is satisfaction with our service.

AL LINDLEY'S SHELL SERVICE

We give S&H Green Stamps
Phone DI 3-4214
Franklin & Walnut St.

SHISLER'S
FOOD MARKET
OPEN 7 DAYS A WEEK—9 A. M. to 11 P. M.
Beverages • Mixers • Ice Cubes
Magazines • Meats • Fresh Produce
13TH AT HIGH STREET DI 4-1342

NEW BROCHURE AVAILABLE 1959 HOWARD TOUR

To the University of

HAWAII SUMMER SESSION

56 days for only \$529 plus \$9 tax
Steamship travel included

ONLY \$25 deposit

Consult

Housemother Mrs. Jennie Stuart
Sigma Kappa
DI 5-5501

TOP TV—The Dinah Shore Chevy Show—Sunday—NBC-TV and the Pat Boone Chevy Showroom—weekly on ABC-TV.



Like all '59 Chevis, this Impala Sport Coupe is new right down to the tougher Tyrex cord tires it rolls on.



Walk around the car that's all-round new . . . then be our guest for a pleasure test—

DRIVE A '59 CHEVY TODAY!

One look at this '59 Chevy tells you here's a car with a whole new slant on driving. You see the transformation in its low-set headlights, the overhead curve of its windshield, the sheen of its Magic-Mirror finish—a new acrylic lacquer that does away with waxing and polishing for up to three years.

But to discover all that's fresh and fine you must relax in Chevrolet's roomier Body by Fisher (up

to 4.2 inches more room in front, 3.3 inches in back), feel the lounge-like comfort of Chevy's new interior, experience the hushed tranquillity of its ride (choice of improved Full Coil or gentler-than-ever Level Air suspension*). Once you're on the road you'll discover such basic benefits as bigger, better cooled brakes that give over 50% longer life, new easy-ratio steering and a Hi-Thrift 6 that gets up to

10 per cent more miles per gallon. And, of course, you find Safety Plate Glass all around in every Chevrolet. Stop by your dealer's and pleasure test the car that's shaped to the new American taste!

*Optional at extra cost.



Tight contests mark IM play

Tight contests highlighted intramural volleyball action Wednesday as two of the five sets played went the full three games.

In B action Hunter grabbed the first game from French, but faltered in the next day. The scores were 6-10, 15-2 and 10-2. Theta Chi racked up the only one-sided triumph of the day, topping Alpha Tau Omega 14-3 and 7-3.

Phi Delta Theta was pushed to the limit by Sigma Nu, but managed to come off the floor with an 8-6 and 10-8 triumph. The other B clash saw both Cherney and Young draw zeros—via the double-forfeit route.

In A action, Sigma Phi Epsilon edged a rugged Sigma Alpha Epsilon squad 11-9 and 8-5. Kappa Sigma won its second game in two days, coming from behind to whip Tau Kappa Epsilon 5-10, 7-4 and 11-8.

IM schedule

Friday, Nov. 21

Volleyball

- 3:50 McClure B vs. Morton B, Court 40; Stafford B vs. NWCC B, Court 36.
- 4:35 Sigma Alpha Epsilon vs. Delta Tau Delta B, Court 40; Sigma Phi Epsilon B vs. Phi Gamma Delta B, Court 43.
- 5:15 Kappa Sigma B vs. Tau Kappa Epsilon B, Court 40; Chi Psi B vs. Lambda Chi Alpha B, Court 36.

see your local authorized Chevrolet dealer for quick appraisal—early delivery!