

# OREGON NEEDS Mark Hatfield NOW

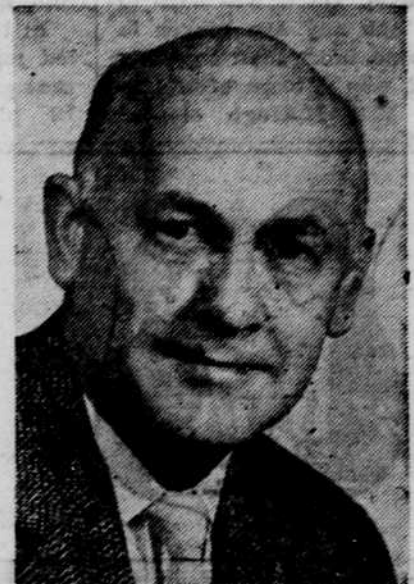
**Lyle E. McCauley**



For  
**Commissioner  
of the Bureau  
of Labor**



**Paul E. Geddes**



For  
**Representative in  
Congress, Fourth  
Congressional  
District**

## GIVE MARK HATFIELD A REPUBLICAN TEAM! VOTE NOVEMBER 4th FOR

### STATE AND DISTRICT

*For representative in congress, fourth  
congressional district*

**PAUL E. GEDDES**

*For governor*

**MARK HATFIELD**

*For commissioner of the  
Bureau of Labor*

**LYLE E. McCAULEY**

*For state senator, third senatorial  
district (vote for 2)*

**EDWIN E. CONE**

**DONALD R. HUSBAND**

*For state representative, fourteenth  
representative district (vote for 5)*

**CARLTON O. (Carl) FISHER**

**EARL H. HILL**

**STUART W. HURD**

**F. F. "Monte" MONTGOMERY**

**ERNEST E. SCHRENK**

### COUNTY

*For district attorney*

**EUGENE C. VENN**

*For county assessor*

**KENNETH E. OMLID**

*For county commissioner (vote for 2)*

**JESS HILL**

**KENNETH NIELSEN**

*For county treasurer*

**GAZELLE NIESPO**