

## Play the Congressional name game

(Continued from page 2)

White called "a deep skill in sensing what may and may not be done." It's too bad that the political labels are used so much, because they are frequently inaccurate, and misleading. In trying to figure out whether Sens. Morse and Neuberger have been "good" senators, one can look at their records in two ways.

From the standpoint of how much the two Democrats have done for the state, one can't deny that they have expended a great deal of effort to help the folks back home. Neuberger has especially been conscientious in regard to getting new projects, writing extensive newsletters, and both Morse and Neuberger are vigorous campaigners.

In addition, Neuberger was one of the few sensible senators when he opposed a measure to forbid the use of government funds to pay a person or institution who would ever propose or conduct a study regarding the surrender of the United States. Morse has many times been invaluable to the Senate in his position as "antagonist to practically everything." The man goes overboard frequently, but most senators consider him an asset to the Senate in his role as gadfly.

The other way in which one can appraise the two senators is to see how much influence they have in their party. White, in the same book, also describes the "inner club" of the Senate which is composed of those senators who decide the policies of their parties and have reached that position because of "concentration upon the coherent and important and an avoidance of the diffuse and doubtful." Also, the inner club member gets along with his fellow senators and has great respect for the Senate's traditions, White says.

Members of the inner club, Morse and Neuberger are not. Although Neuberger's crusade against squirrel-hunting on the White House lawn was humor-

ous, it was not an "avoidance of the diffuse and doubtful." Quite the opposite. His supporting Ike on foreign policy was mostly wise, but his pleas for other Democrats to do likewise is not something that an inner-club member ever does. His criticism of senators' deleting certain remarks from the Congressional Record was honorable, but a senator doesn't win the liking of his colleagues by telling them that they shouldn't do this or that.

Morse has lashed out at so many party members with his cat-calls of "phony liberal" and "impeach him" that he is not one of the "party regulars," let alone Vice-Presidential timber which he was recently reported to be.

Moderates like Lyndon Johnson and Richard Nixon are in positions of power now because they have always been aware of what could and should be done and because they will go halfway with their opponents. Morse and Neuberger have been political "loners" too much to become inner club members. This is not to say that they haven't been good senators for Oregon. It's just that they will probably never be very influential in their party.

## Career sessions slated by bureau

The newly instituted University Placement Service, in cooperation with the federal government, will present a "Federal Charter Day" Oct. 28.

Over ten percent of the nations working force is employed by the federal government, and Federal Career Day is designed to give University students an opportunity to investigate the employment possibilities provided by the federal service, according to Eugene Dils, placement service director.

The meetings will be held in the afternoon to avoid conflict with classes.

The first session at 2 p.m. will be designed to answer any general questions students may have on federal government service.

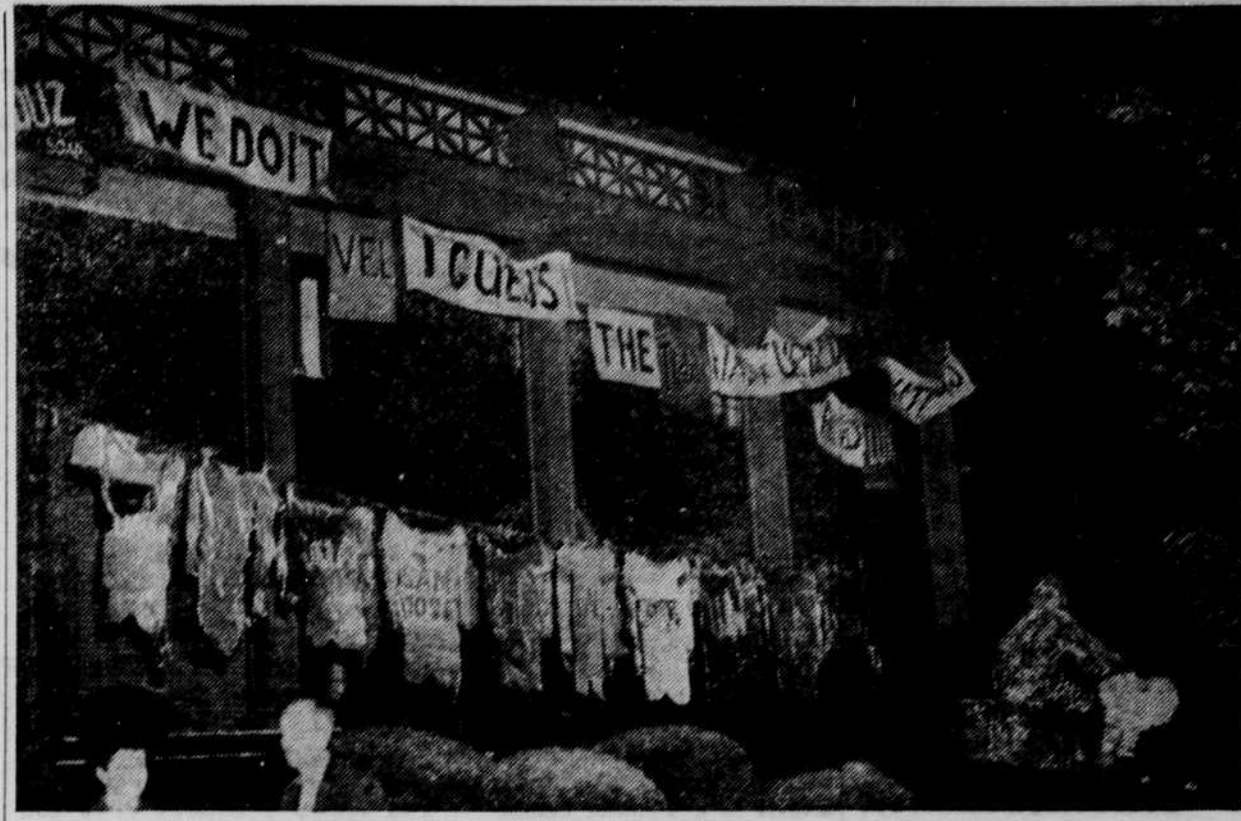
The meetings at 3 o'clock will be designed to introduce students to members of the federal service in various occupational fields and to answer any specific questions that students might have about work in these fields.

## Campus Calendar

Tuesday		
Noon	Pol Sci Dept	110 SU
	P.E. Grads	111 SU
	Rally Bd	112 SU
	Brees Luch	113 SU
	KRO	114 SU
	SU Creative Arts Com	302 SU
	SU Pubcty Com	315 SU
12:15	SU Cof Hr Com	313 SU
1:00	Brees Asbly	Ballrm SU
4:00	Brees Coffee Hr	
	Dadstrm	SY
	SU Direct	313 SU
	United Appeal	315 SU
6:30	Rifle Clb Org Meet	110 SU
	Cosmo Exec	YM SU
8:00	Charter Day Concert-Fac Trio	Ballrm SU

## KWAX

Tuesday		
5:55	Sign on, program rundown	
6:00	News	
6:05	Dinner Hour	
6:45	Campus News	
7:00	Perspectives	
7:30	Concert Hour	
9:00	President Reports	
9:15	Jim Dutcher Show	
9:30	Adven. in Progress	
10:00	World News	
10:15	Jim Dutcher (cont.) sign off	



ALMOST BUT NOT QUITE good enough to win first place in the women's division of the Homecoming sign contest last weekend was this effort by Alpha Chi Omega. Most signs had been taken down by Monday. (Emerald photo by Ken Tsukushi).

## Chemistry dept. to get new equipment soon

Purchase of an \$18,000 analytical ultracentrifuge by the chemistry department of the University will give the department the final piece of equipment needed to make it one of the best-equipped research centers in the Northwest.

The purchase is made possible through a \$25,000 grant from the National Science Foundation, according to Department Head Francis J. Reithel.

The grant has been made, Reithel explains, for research into the structure of molecules, a project for which the analytical ultracentrifuge is an essential piece of equipment.

There are only two other analytical ultracentrifuges in the Pacific Northwest, says Reithel. One is at the University medical school in Portland and the other in Seattle at the University of Washington medical school.

The analytical ultracentrifuge combines three essential properties for research into molecules. It produces a high centrifugal field, it can be evacuated to pro-

duce a vacuum, and it can be cooled to refrigerator temperatures.

The optical system of the equipment is designed, Reithel points out, so the behavior of the protein can be watched during the operation of the machine.

Under the new grant, Reithel and Raymond G. Wolfe, assistant professor of chemistry, will continue work which they began last year. At that time they were able to isolate and purify an enzyme, one of the special proteins which control the speed of activities in cells.

## Men's literary group plans first meeting

An organizational meeting of Ye Tabard Inn, men's literary society, is scheduled for 7 p.m. today in the Student Union. Room number will be posted in the main lobby.

Any male student interested in writing is invited to attend.

## HELP WANTED

to consume those tempting, terrific, titillating ice cream sundaes sold exclusively at DAIRY QUEEN, two blocks west of campus on 13th. If you can't finish it all yourself, bring along a friend to help!

## Letter to Editor . . .

(Continued from page 2)

played by a member of the Eugene Gestapo. Being told to move out of the aisles and into the rain was not too appreciated, but considering the fire laws we would have done so just on being asked. This Gestapo member however saw fit to bodily push us down the stadium stairs being very abusive as he did so. Were it not for the badge which this person had already proved he did not deserve, the three of us would not have stood for such actions. All it would take to make any college person conform to the rules of the stadium would be to inform them of such rules before resorting to police state methods.

Knowing others on the Eugene Police force and thinking very highly of the way they do their jobs, we can say with some justification that this person is not at all prepared to wear the badge and especially not at University of Oregon games where a person must have both a sense of humor and demand respect without using physical means.

We believe that this incident should be reported to the Eugene Police Dept. as an example of misuse of police authority. The officers badge number was 101.

This is consistent however with the general level of respect shown to students at their home games.

Larry Cole  
Senior in Psychology  
Jim Smith  
Sophomore in Pre-Med.  
Vic Katz  
Business

## Sig Ep announces ten semi-finalists

The number of hopefuls in the annual Sig Ep contest for "Swamp Stomp" queen was reduced to ten Monday when semi-finalists were chosen.

Contestants include Mary Duncan, Hendricks; Janet Glein, Chi Omega; Julie Hampton, Carson 5; Sandy Higgins, Delta Delta Delta; Sharon Huntley, Susan Campbell; Joyce Joseph, Alpha Chi Omega; Carol Lunday, Delta Gamma; Pat Rushton, Gamma Phi Beta; Stephanie Redlock, Kappa Kappa Gamma; and Sue Scales, Alpha Phi.

From these candidates, the field will be narrowed to five finalists prior to selection of the queen on October 25.

CHOOSE A CHARMER

# DAIRY QUEEN

## CHERRY SUNDAE



Get set for a happy eating adventure with DAIRY QUEEN in "cherryland." Cool, smo-o-oth DAIRY QUEEN topped with choice fruit flavor — what a dish! DAIRY QUEEN is a freshly frozen dairy food. You'll find DAIRY QUEEN Cherry Sundaes a real favorite at your nearest DAIRY QUEEN store.

Enjoy Genuine Dairy Queen in SUNDAES • CONES • MALTS & SHAKES • QUARTS & PINTS

As Advertised in POST & LOOK

© 1952, DAIRY QUEEN NATL. TRADE ASSN., INC.

2 Blocks West of Campus on 13th

## WHERE THE SEASHORE AND CAMPUS MEET!

# The Driftwood

MOST ATMOSPHERIC RESTAURANT SERVING THE CAMPUS

- BROILED STEAKS
- GOLDEN FRIED CHICKEN
- SEAFOODS OF ALL KINDS

5094 MCKENZIE HY., SPRINGFIELD RI 6-9207

