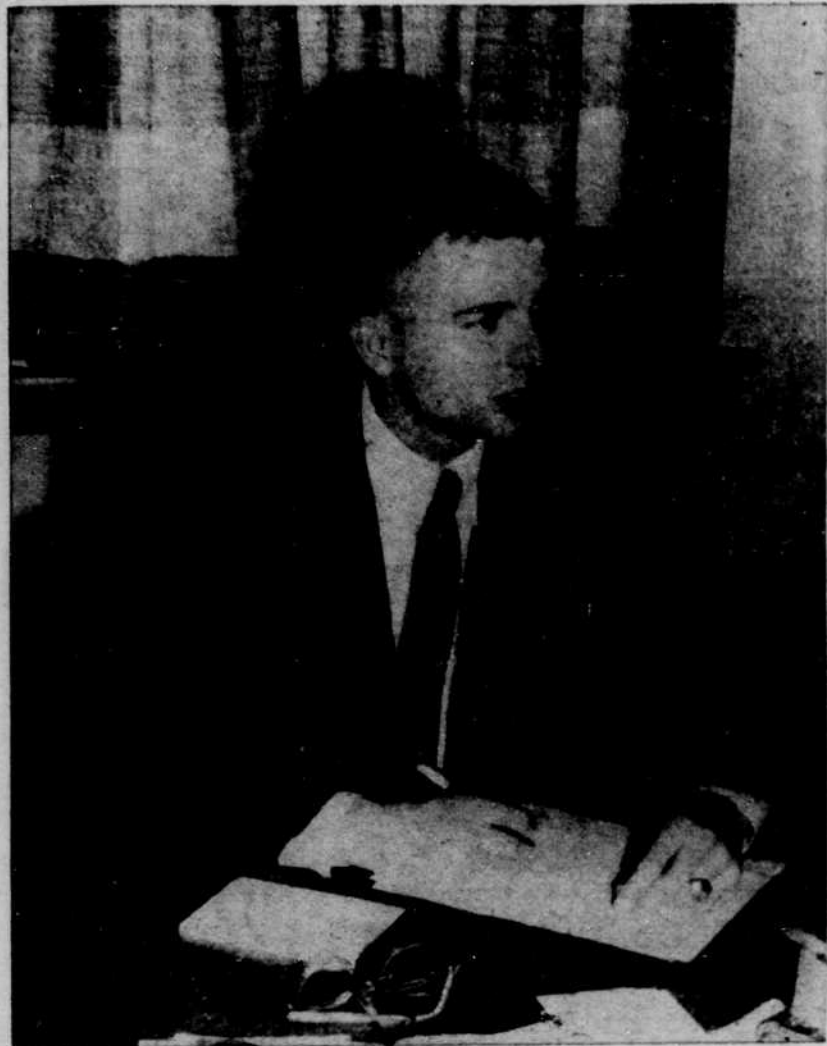


'Jack-of-All-Trades' Describes SU Official



JIM POND, the SU's assistant director, is in his third month at the new position. Last year Pond was head counselor at Morton Hall

By PHIL HAGER
Emerald Feature Editor

The University's new assistant SU director will be a sort of "jack-of-all-trades."

These are the words 26-year-old Jim Pond chooses to describe his 2½ months-old job, the job he's been on since July 1. He was appointed to the position just before school was out last spring. Pond, at that time, was head counselor at the Morton unit of Earl Hall.

His main duty will be advising campus publications: the Emerald, Oregana, Pigger's Guide, and Ore-Nter. In this capacity he will be a non-voting member of the publications board.

His other duties, he feels, are "hard to define." He's in charge of SU administrative offices, and in Director Si Ellingson's absence, Pond will run the SU.

This summer Pond helped coordinate SU facilities with the University's summer recreation program.

Leaves Iowa

Pond was born in Dubuque, Iowa. Later his surroundings changed from cornfields to palm trees—he moved to Beverly Hills, Calif.

After graduation from Beverly Hills High in 1947, Pond went to UCLA where he received a B.A. in history in 1951. His next four years were spent in the claims division of the Prudential Life Insurance corporation in Los Angeles.

Last fall Pond came to the University for graduate work in history, also taking the counselor's

job at Morton Hall. His work as head man at Morton undoubtedly was a push in the right direction toward his present job.

He himself says that the counseling job has helped him in working with the students and in getting better acquainted with campus organizations.

Works Easily

Pond's approach to dorm problems has been called "low-pressure." But "low-pressure" or not, he gets the job done.

University officials generally concluded that his counseling work was "outstanding." Dean of Men Ray Hawk said that he was "pleased and flattered" that a counselor was picked to fill a job that came with a change in the SU personnel and organizational set-up.

Pond says he's "well-pleased" with his new job. If this year goes as smoothly for him as his last one did, the people he works with will be "well-pleased" too.

Patronize Emerald Advertisers

You Need to Look Sharp
To Get the Ones You Want
Be Extra Sure This Week
Get a Cut in the
SU Barber Shop
Right Down Stairs
in the Student Union

Perry Announces Oregana Staffers

Jim Perry, Oregana editor, recently announced additions to the annual staff. They are the following: managing editor, Connie Kennedy; layout associate, Larrilyn Carr; photo associates, Sue Ryder and Jack Marsh; art editor, Barbara Bryan; index editor, Pat Cushnie; housing editor, Darlene Leland; and academics editor, Anne Mautz.

Also included on the list were events editor, Joan Rainville; personnel editor and correspondence manager, Mary Jane Alexander; sports editor, Tom Harding, and captions editor, Sue Kinser. An activities editor will be appointed at a later date.

Eleanor Whitsett, business manager, has also announced her business staff for the yearbook. Members of this staff are Jim Carter, sales manager; Nancy Hamilton, organization manager; Marcia Bishopric, executive secretary; and promotion, Norm Steen.

READ EMERALD WANT ADS

'Country Girl' Opening Set

"The Country Girl," a UT production that was first given during summer session, will open September 28, 29 and October 5 and 6 at the University Theatre.

Summer cast members will repeat their original roles in the revival of the production. Featured are Leroy Overen in the role of Elgin, an actor who has fallen from popularity, and Sally Moller Call as Mrs. Elgin. Paul Ward plays the director who has faith in Elgin and his ability to rise again to the top.

Ticket sales for the play will start Sept. 24 and the box office will remain open from 1 to 5 p.m.

daily. Reservations may be made during those hours by calling ext. 401. Admission is \$1.00.

Season tickets are available at the box office for \$5.00. These tickets, which will include "Country Girl," entitle the holder to \$6.00 worth of admissions and special bonus attractions. Former season ticket holders who wish to retain the same seat must do so by Oct. 6.

PATRONIZE YOUR ADVERTISERS

For Something Different Try

Moreno's Mexican Kitchen

Featuring authentic Mexican dishes from old family recipes

Osburn Hotel Basement
Pearl and 8th Streets

Phone DI 3-5612

New Standard plant foods help the West produce better meals at less cost



Broadcasting of Standard's new uniform chemically blended plant food by airplane can turn sparse hilly acres into rich pasture for livestock

RICHER SOIL means better crops, yet the West has never had enough soil-building fertilizer. To help meet farmers' needs, Standard opens a \$16 million plant next month which will produce petroleum-derived plant food* in pellet form for Western soils and crops.

This uniform blend of essential plant growth elements is so effective that 400 pounds on an acre of grassland often enables it to feed 3 to 5 times more livestock. On other crops, too, it increases profits per acre. With this better use of Western land, your family will get tastier, more nourishing meals for every budget dollar.

*One of many ORTHO PLANT FOODS, made and sold by Standard's wholly-owned subsidiary, California Spray-Chemical Corp.

STANDARD OIL COMPANY OF CALIFORNIA
puts petroleum progress to work for you

Progress in the West means...



1956

food production must increase 35% to feed the 26½ million people who'll live here by 1965



1965

The First National Bank of Portland Welcomes You

And Invites You To Establish Your Account With Them

- Low-Cost Check Plan Available
- Wide Experience With Student Accounts

EUGENE MAIN BRANCH
896 Willamette Street
Building Oregon for 90 Years