

ENTERING FRESHMEN found New Student Week complicated by numerous tests, many of which were taken in McArthur Court.

Millrace Facilities Open for Business

The boathouse on the millrace will be open today for canoe rentals, weather permitting, according to Louis Bellissimo, Student Union recreation manager.

Six canoes and one rowboat belonging to the University may be rented by students for afternoon and early evening rides down the millrace.

The boathouse will be open today from 3:30 to 7 p.m.; Saturday from 1 to 7 p.m., and Sunday from 1 to 7 p.m. Canoes and rowboat may be rented for 60 cents an hour.

The boathouse is located on the north bank of the millrace east of the road leading to the physical plant.

**PATRONIZE YOUR
• ADVERTISERS •**

Try taste-tempting creations from the
Rosebud Bakery
Pure Ingredients
Fresh Baked
Clean Baked
Cakes for Special Occasions
56 W. Broadway Ph. DI 4-8216

NOW IT CAN BE TOLD

Trophy Theft Mystery Solved by Confession

Editor's Note: This "expose" was tracked down by Emerald feature writer Bobby Harris, who got the story right from the horse's mouth—the horse in this case being Jack Socolofsky, last year's SU board chairman, who with Bob McCracken, one-time president of AGS, and a third party "Bill" have admitted the theft of a number of fraternity trophies last spring.

By JACK SOCOLOFSKY
as told to
Bobby Harris
Emerald Feature Writer

One morning last spring term the Phi Deltas, Sigma Chis, and the Pi Kappa Alphas awoke to discover the disappearance of some of the most cherished possessions of any fraternity—their trophies—and in the case of the Sigma Chis, their big cross of ever-honored memory.

Perfect? Crime Told

Events leading up to what was undoubtedly the perfect crime can now be related since the persons responsible have been graduated, and under the University of Oregon statute of limitations, graduation means relative freedom from capture.

Perhaps this cannot be considered a perfect crime since the desire to tell our guarded secret has finally overpowered us.

I think the initial blame for the entire episode can be placed upon the Phi Deltas themselves, for had they promptly given us the fried egg sandwiches they promised us on that fatal eve, we would never have had to look to trophy stealing to keep us busy.

Asked for Sandwiches

We had been asked to the Phi Delt house for fried egg sandwiches that night and since one of our group was a rather heavy eater, we were the first to arrive at the house. There were three of us, two leg men and Bill, who drove the car.

Quickly we selected trophies from the Phi Delt house and car-

ried them over to the Pi Kappa Alpha house by way of Chi Omega and Kappa Kappa Gamma. We took the crest from the Pi Kappa Alpha house and gave it to the Pioneer Father.

We then took the big snow-white-for-purity cross from the Sigma Chi house and presented it to the Pioneer Mothers who always wanted to be a Sweetheart of Sigma Chi, and had not been able to understand why they had overlooked her up to that time.

This all took quite a little bustling and my chubby accomplice, the rather heavy eater, was quite out of breath which came in short gasps between giggles.

Return for Sandwiches

Work completed, the three of us shook on a job well done and returned to the Phi Delt house for the fried egg sandwiches, which, I might add were about done by this time.

The next afternoon Rice (Emerald editor of last year) public servant soon to attack the evil AGS, carried the story on the front page of the Emerald and pledged a crusade to stop trophy stealing and advocated trophy cases as standard equipment.

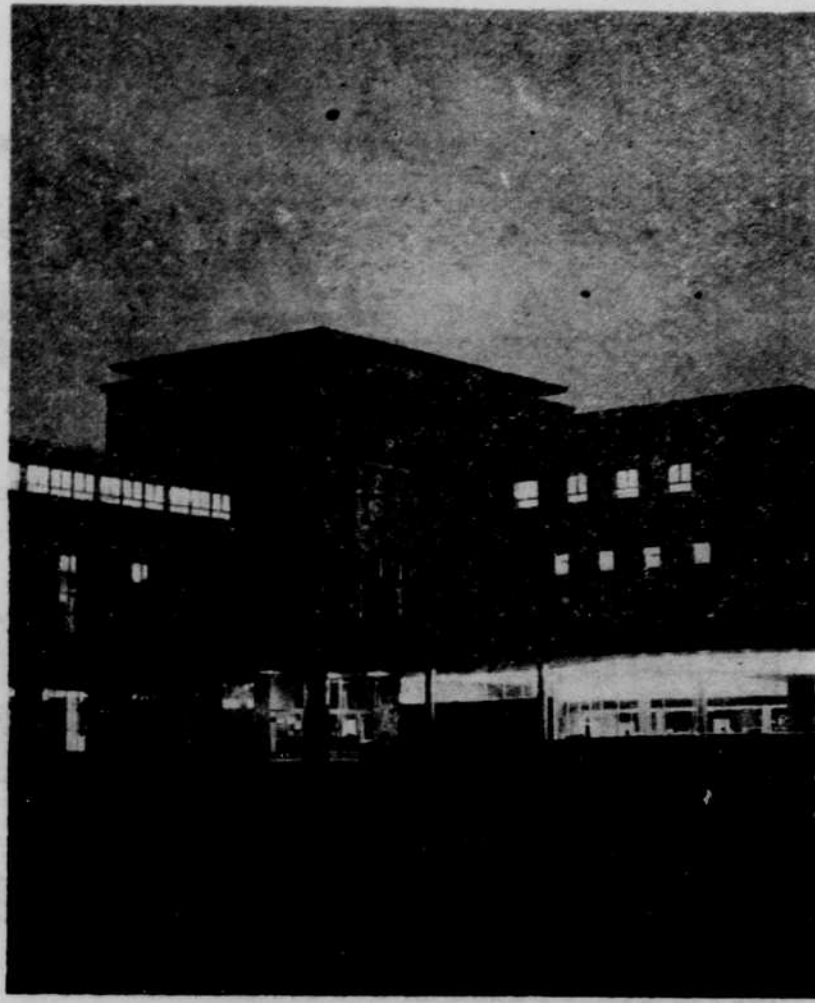
We sympathized with the presidents of the victim fraternities explaining that we too had been bothered with similar crimes in our own houses.

No one else paid too much attention to the incident except of course, the Sigma Chis who had lost the very bulwark of their organization.

File Stays Open

The file, however, remained open. I guess the Pi Kappa Alphas decided the Phi Delt trophies were a pretty good deal and looked better above their fireplaces than above the Phi Deltas. Anyways, they were missing for a long time.

The Pioneer father gave up the Pi Kappa Alpha crest, but the Pioneer mother will always be the Sweetheart of Sigma Chi and any other gathering that need "sweethearts" to make a go of it.



Erb Memorial Student Union

C.U.
at
the
S.U.

OUR SCHEDULE

BUILDING HOURS		
M, T, Wed, Th	7:30 a.m.—11:00 p.m.
Sun	7:30 a.m.— 1:00 a.m.
F, S	1:00 p.m.—11:00 p.m.
MAIN DESK		
M, T, Wed, Th	8:00 a.m.—10:00 p.m.
F, S	8:00 a.m.—11:00 p.m.
Sun	1:00 p.m.—10:00 p.m.
SODA BAR		
M, T, Wed, Th	7:30 a.m.—10:45 p.m.
F, S	7:30 a.m.—12:45 a.m.
Sun	1:00 p.m.—10:45 p.m.
CAFETERIA		
M, T, Wed, Th, F	11:45 a.m.—12:30 p.m.
	5:30 p.m.— 6:15 p.m.
RECREATION		
M, T, Wed, Th	12:30 p.m.—10:30 p.m.
F, S	12:30 p.m.—12:30 a.m.
Sun	1:00 p.m.—10:30 p.m.
CANOE HOUSE—open in good weather		
M, W	3:00 p.m.— 7:00 p.m.
T, Th, F, S, Sun	1:00 p.m.— 7:00 p.m.

For your convenience the administrative office will remain open during the lunch hour Tuesday through Friday.