

# Ex-Ducks Fly High in Pro Ball

READ EMERALD WANT ADS

By Jack Wilson  
Emerald Ass't Sports Editor

As the high-voltage grid machines of the professional football ranks get their regular season under way this weekend, talented ex-Ducks will be sparking several top clubs.

At the head of any list of ex-Oregon greats currently playing for pay must come the Los Angeles Rams' Norm Van Brocklin, top passer in the National Football League. Last year the Flying Dutchman again led the league by connecting for 139 completions and 2,167 yards. Thirteen of his pitches were for TD's.

### Lewis Rolls for Rams

With Van Brocklin on the Rams is his old Oregon teammate, Woodley Lewis, who is now primarily used as a kickoff and punt runback specialist. The fleet, fiery Lewis is always a hard man to bring down.

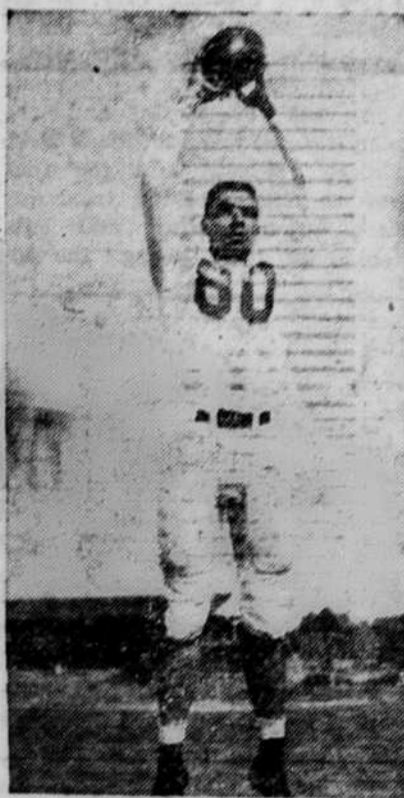
Newest star in the professional cosmos is George Shaw, the all-around athlete who left Eugene last spring as the bonus draft pick of the Baltimore Colts. Shaw will make his league play debut September 25 against the Chicago Bears, but he has several highly successful pre-league games under his belt already.

### Shaw Favored by Coach

Shaw, who led the nation in total offense during the '54 season, showed so much spark in his summer outings that Coach Weeb Ewbank has given him the nod over Stanford's Gary Kerkorian and Maryland's Jack



**JACK PATERA**  
Baltimore Blockbuster



**MONTE BRETHERAUER**  
Kicking for Colts



**GEORGE SHAW**  
He just keeps rolling

Scarbath for the starting QB role.

The Shaw-led Colts ran the top-ranked New York Giants into the ground during the first half of their exhibition game. Shaw sat out the second half as Ewbank tried to pick out his Number 2 quarter, and the Colts dropped a narrow 17-14 decision.

First of the long-awaited Shaw Van Brocklin duels will come off November 20 at Baltimore, with

the squads doing a repeat in LA December 4.

Back to the Colts from the service is Monte Brethauer, rugged Oregon end who was drafted by the Baltimore outfit in 1953. Brethauer is certain to see lots of defensive backfield action and is handling the Colt punting as well. Jack Patera, drafted along with Shaw, has seen summer action as an offensive guard. Patera will certainly have trouble breaking into the big, rugged Colt forward wall, which has yet to be pushed around by anyone, but the easy-going all-Coast selection has the stuff to make the grade in any league.

Hal Reeve, four-year letter

winner who teamed with Shaw and Patera in Oregon days, will play tackle and end for the Calgary Stampeders.

## Beavers' Coleman To Tour in Japan

Oregon State's baseball head man, Coach Ralph Coleman, leaves Friday for a month's tour of Japan to conduct baseball clinics for the Air Force.

Coleman, 1955 president of the American Association of College Baseball Coaches, made two similar trips to Europe for service clinics in 1945 and 1954.

# Oregon Grounded In New Grid Look

A return to ground power for offensive drive for a Shaw-less team is the key feature of the 1955 Oregon football outlook.

Coach Len Casanova and his assistants placed the accent on running plays after the departure of quarterback George Shaw created a large vacancy in the signal calling and passing department for the first time in some while at Oregon.

The brilliant Portland back held a tight grip on the Webfoot aerial reins his junior and senior

### THE SCHEDULE

- Sept. 23—USC at Los Angeles (night)
- Oct. 1—Washington at Portland (night)
- Oct. 8—Colorado at Eugene
- Oct. 15—California at Portland (night)
- Oct. 22—Arizona at Tucson (night)
- Oct. 29—Idaho at Eugene
- Nov. 5—WSC at Pullman
- Nov. 12—Stanford at Palo Alto
- Nov. 19—OSC at Eugene

years after playing defense and utility roles during his underclassmen seasons with Hal Dunham and Barney Holland quarterbacking.

Previously Duck football had been highlighted by the stellar passing play of Norm Van Brocklin and consistent work of Earl Stelle at the key T-formation slot.

With Shaw's graduation the quarterback mantle fell on John Keller and Wally Russell, neither outstanding passers, and the Webfoot brain trust began shopping for a new offensive emphasis.

A raft of speedy freshman and junior college halfbacks, plus a pair of busting fullbacks in Jack Morris and Fred Miklancic put Oregon in the rushing business, but the presence of one of the coast's top ends in Phil McHugh

has not ruled out the passing attack.

To handle the new look, Casanova chose Tom Crabtree, a halfback from Marshfield high with some play calling experience as a prep school freshman. Crabtree's performance in spring practice was a pleasant surprise, as the halfback convert made few false moves.

The addition of junior college transfer Jack Crabtree helped bolster the quarterback contingent when Keller married. Sophomores Jim Shanley Leroy Phelps and Jack Brown, plus junior Chuck Osborne rounded out the halfback group with veteran Dick James.

The line, however, was weakened by the loss of Jack Patera, Hal Reeve, Keith Tucker, Ron Pheister and Dick Mobley. Junior college transfers Bruce Brenn, George Slender and Bill Tarrow aided the end department where McHugh had been the only left-over.

Art Weber moved in at center after Pheister left, but will get stiff competition from Nick Markulis and an improving Norm Chapman.

Veteran Reaous Cochran anchored his old guard spot, and his high school teammate Spike Hillstrom took a hold on the other. Harry Mondale, a 1951 letterman, and Jim Jacques, who earned a stripe in 1952, are back at guard after service tours.

Season Captain Lon Stiner heads the tackle list, with letterman Chuck Austin and Harry Johnson returning also. Jerry Kerschner and John Raventos offer support from the 1954 Frosh ranks.

Final touches to the Oregon new look were the promotion of Bill Hammer from Frosh coach to-line mentor and the hiring of Jerry Frei to replace Hammer with the freshmen.

*Welcome Students*  
from "Brownie"

*Your friendly campus jeweler,  
who is ready to serve you.*

## University Jewelry

849 EAST 13th AVE.

**STUDENTS, REMEMBER**

- Open a low-cost check plan now!
- As little as \$1.00 opens your account.
- No monthly service charge.
- Buy a book of 10 checks for \$1.25.

Eugene Main Branch  
**First National Bank**  
Of Portland  
896 Willamette St.

**MAYFLOWER**  
ELEVENTH AT ALDER

TONITE THRU SATURDAY

A GREAT NOVEL BECOMES A SENSATIONAL FILM!

**NOT AS A STRANGER**

starring OLIVIA de HAVILLAND • ROBERT MITCHUM  
FRANK SINATRA • GLORIA GRAHAME  
BRODERICK CRAWFORD • CHARLES BICKFORD

RELEASED THRU UNITED ARTISTS

# Keep Up On Oregon!

Mail this coupon in today, all of you alums. And, students, an EMERALD makes a wonderful letter home.

**1 year \$5.00**

Oregon Daily Emerald,  
University of Oregon,  
Eugene, Oregon.

Please send me the Oregon Daily Emerald for one year.  
I enclose \$5.00  cash  check  money order.

Name \_\_\_\_\_  
Address \_\_\_\_\_  
City \_\_\_\_\_ State \_\_\_\_\_