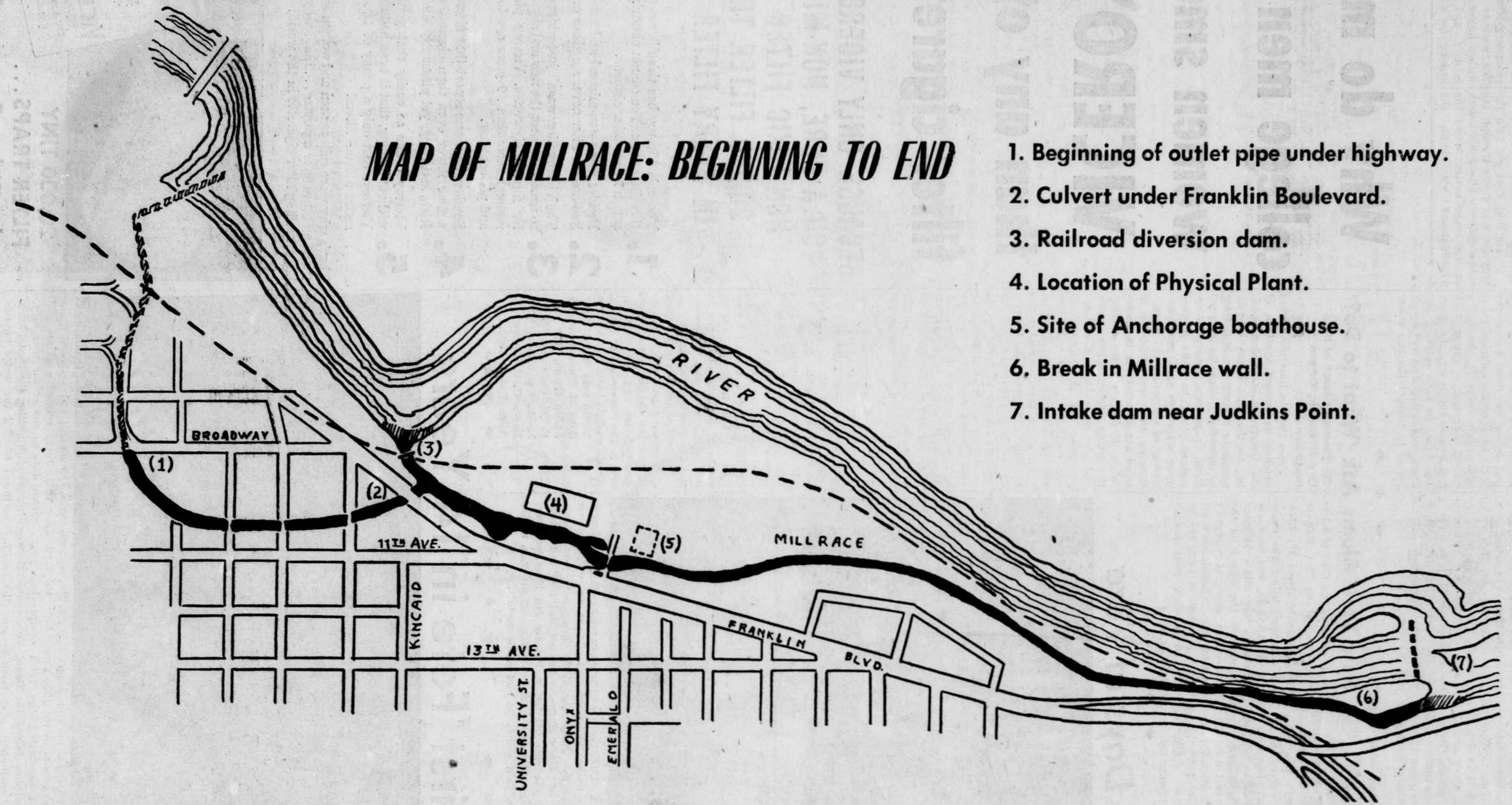


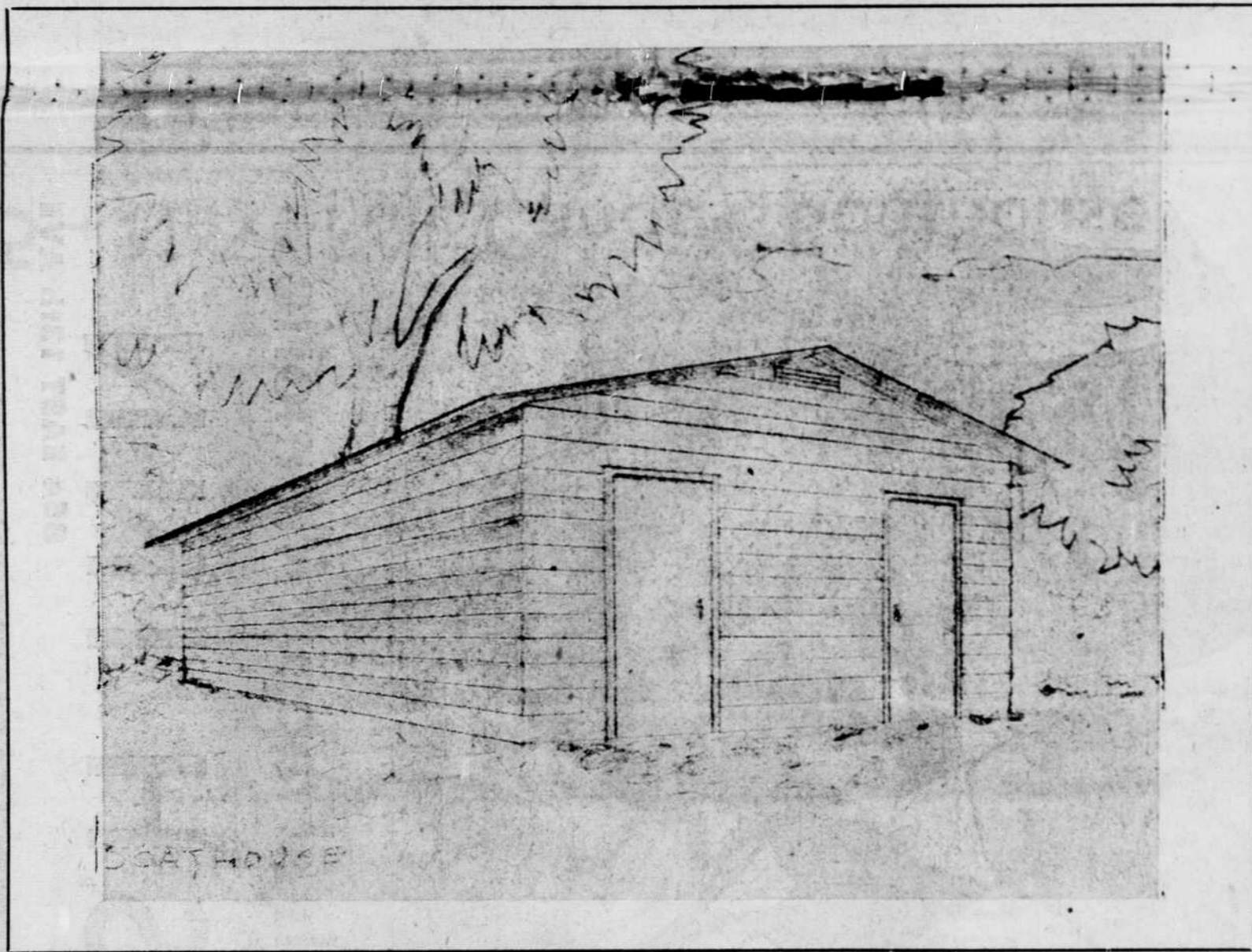
Washouts, Bottlenecks Slow Race Flow

MAP OF MILLRACE: BEGINNING TO END



1. Beginning of outlet pipe under highway.
2. Culvert under Franklin Boulevard.
3. Railroad diversion dam.
4. Location of Physical Plant.
5. Site of Anchorage boathouse.
6. Break in Millrace wall.
7. Intake dam near Judkins Point.

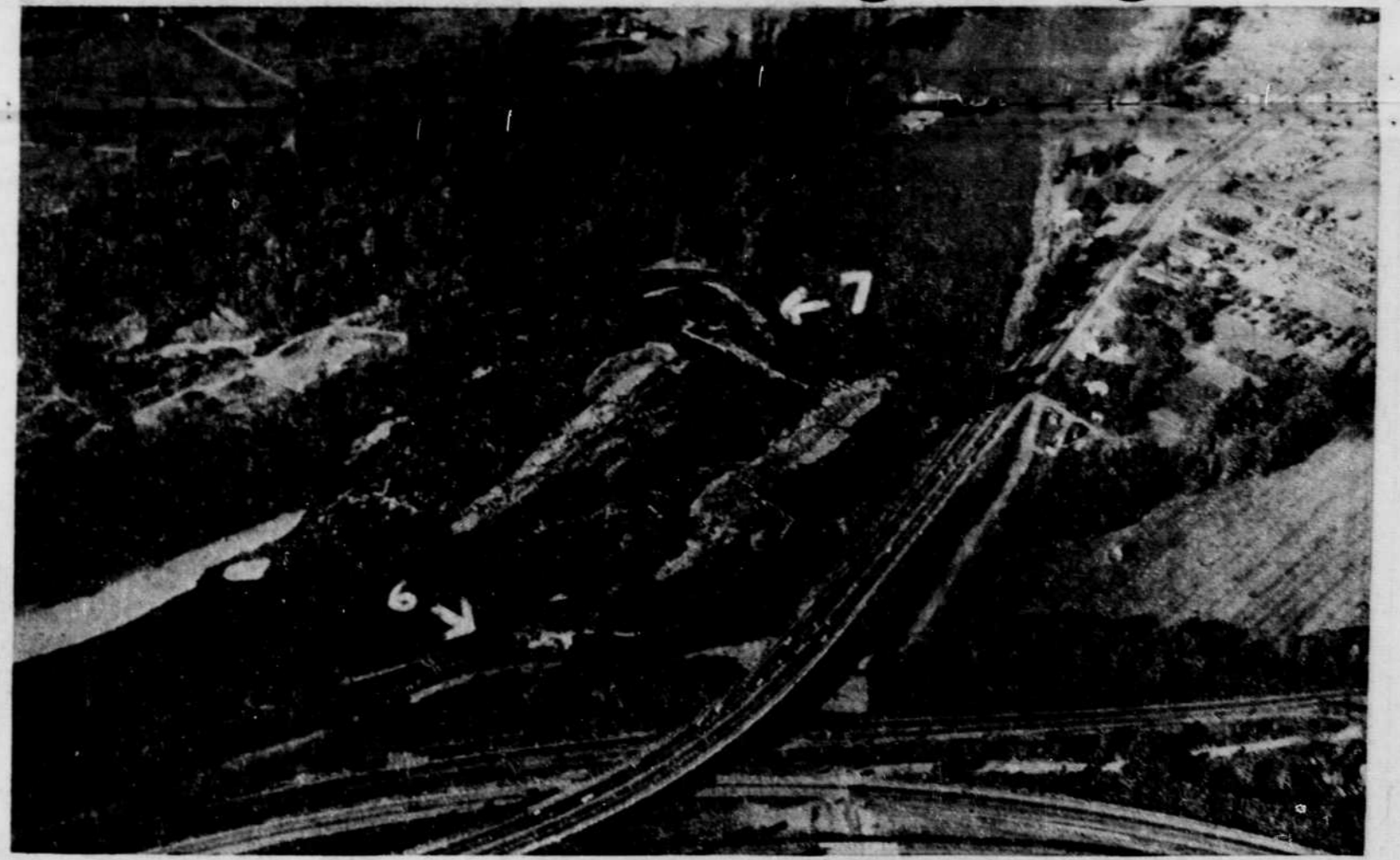
5 – Next Fall: Canoes, Boathouse



ROOM FOR ABOUT 20 CANOES will be provided in this boathouse, which is planned for a site east of the physical plant. Subject only to the approval of the budget board, it will be operating with canoes by fall term. The Student Union will operate the

canoe rentals. This is just one facility of a larger project "The Anchorage," which is planned for the future. The larger unit will include dining, dancing and other recreation facilities.

7 – The Dam Ain't Long Enough



THIS AERIAL PHOTO shows clearly two of the problems faced in restoration of the millrace. Arrow 7 points to the dam, showing how the river has washed around the north end. The city attempted to stop this bad flow by dumping rock and gravel from the north bank out to the dam. This did not stop the washing out, however, and now the river has gouged a large hole out of the north bank of the river, carrying away almost three acres

of city owned land. In addition to washing out the north bank, this current is directed to the south bank, where it is undermining the unprotected bank of the Millrace. Arrow 6 points to the break in the millrace canal which occurred in the 1940's. The canal was dammed up on both sides of the break, and a pipe carries the water from one side to the other.

1 – The Plug



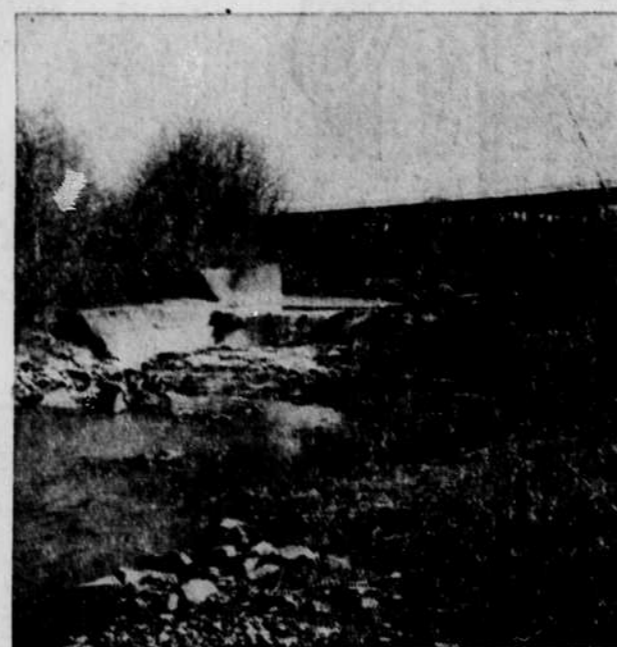
THIS IS THE LOWER OUTLET of the Millrace, after the stream has flowed past all the Millrace houses. From this point, the water flows through a 30 inch pipe for about 2000 feet underneath the highway, before finally emptying into the river again.

3 – The Outlet?



THIS DAM WHICH ALLOWS water to overflow the race into a channel which heads to the river, could be re-built, in order to provide for a much greater flow out of the millrace. Since engineers do not consider the outlet pictured at the left to be adequate if the flow would be greatly increased, this site would probably be used to get the water out of the millrace. Although it would not increase the flow past the Millrace houses, it would nevertheless provide a sanitary flow.

6 – The Bottleneck; Fore and Aft



THE TWO PICTURES ABOVE are different shots of the same site. The photo on the left gives a view of the washout from downstream; the right photo gives the upstream view. When the wall was washed out in the 1940's, the 'Race' was dammed up on both sides of the break, and an underground pipe was installed to



carry water from one side of the break to the other. The grill in the lower left hand corner of the right picture shows where the water enters the pipe. This pipe controls the flow of the millrace, since all millrace water must pass through it.