



LEFT

Donna Lory . . . smartly dressed for church in her costume tweed suit with black, white and pink flecks dotting her semi-box jacket and pencil line skirt. Her pure silk shantung blouse matches her jacket's lining . . . making her the picture of fashion for Spring term.

**\$75.00**

Suits . . . Second Floor



RIGHT

Cathy Newman models her princess-style wash-easy cotton dress . . . Just the thing for Spring term classes! The high empire waist gives that long look to this lovely dress which is available in Bermuda blue and sand brown.

**\$14.95**

Sportswear . . Second Floor

# 1955 College Board

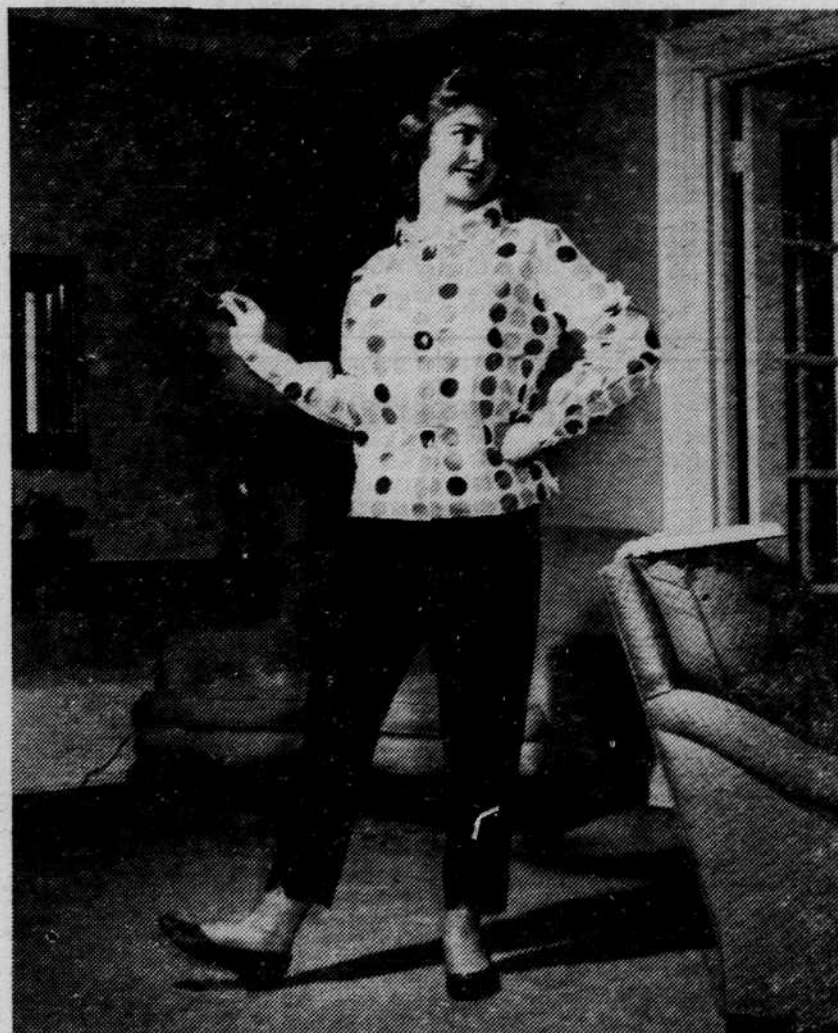
## "Long Look

# THE BON MARCHE

Eugene

## Takes a At Spring"

- JANE BERGSTROM ● BETTY FACKLER ● DONNA LORY ● JOYCE MEPPEN
- MARGARET TYLER ● JACKIE ROBERTSON ● CATHY NEWMAN ● BARB WILCOX



LEFT

Jackie Robertson is ready for an afternoon of studying at the river in her White Stag shirt-jacket of ice poplin.

**\$5.95**

Jackie is relaxed in her tapered black sailtone "crazy-pants."

**\$5.00**

Sportswear . . Second Floor

RIGHT

Barbara Wilcox displays her Spring date dress fashioned of that wonder-fabric . . . Celanese . . . which sheds wrinkles beautifully. This two-piecer in navy blue has a knife-pleated skirt and middy-style over blouse. The collar and taffeta bow accent this picture of fashion.

**\$49.95**

Better Dresses . . . Second Floor

