

# Casaba Squad to be Rebuilt; Borchner Faces Stern Test

Oregon's sophomore-dominated basketball squad raced through their third practice of the season Wednesday as Coach Bill Borchner gave the 22 varsity candidates a thorough workout.

Limited by PCC rules to a two-hour practice, Borchner is using his time economically in preparing the relatively inexperienced Ducks for their season's opener with Santa Clara on December 3. Wednesday the Oregon mentor spent considerable time in perfecting offensive plays with emphasis on working around the center post.

### Holland Assists

Assisted by Barney Holland, Oregon cage star of the 1952-54 seasons, Borchner must build a team from only four returning lettermen from the 1954 team plus a former cage letterman from the 1951 season. Expected to figure heavily in plans for the season are Max Anderson at center, Ray Bell at forward, and Jerry Ross and Howard Page at guards from last year's team.

A returnee from 1951 is Jim Losoutoff, a forward, one of the biggest men on the squad and a fine rebounder. Losoutoff broke the all-time school record for rebounds in 1951 with 398 for the 31-game season that year. He scored 318 points, including 163 in Northern division competition, and was named to the All-Northern division second team. Since then he has been playing AAU ball.

In his fourth season at the Oregon helm, Borchner faces a rebuilding job this year with 15 of the 22 hopefuls having no varsity experience. Only Losoutoff and Page are seniors in eligibility and much time will be spent with the first-year men in an effort to find replacements for five graduated lettermen.

### Reserves Report

Backing up the veterans in early practices have been 1954 varsity reserves Kent Dorwin, Gary McManus, Bill Sherman, and Rex Davis, all juniors, junior Denny Rapp, and sophomores Jack Sherman, Bob Wagner, Bob Anderson, Larry Barnes, Ed Bingham, Bergé Borevick, Rich Costi, John Lundell, Don McLain, Jerry Pool, Darrell Tyberg, and Frank Werner, most of them from the 1954 Frosh team.

Limited to four practices a week, the Frosh team did not work out Wednesday, but will resume drills this afternoon in the P.E. court under the watchful eye of Coach Don Kirsch. The team welcomed 23 candidates to its first practice Monday where Kirsch began conditioning drills which continued into Tuesday.

Those turning out for the Frosh included Bob Cellers, Drain; Bob Ayre, Marshfield; Dick Koford, Corvallis; Ron Dodge, Olympia, Wash.; Paul Tucharth, Westfir;

## Theta Chi Tops Bowling League

Despite a 4-0 shutout at the hands of Phi Kappa Sigma, Theta Chi remains atop the fraternity bowling league as a result of Tuesday night's action.

Theta Chi, with a 14-6 season's mark, leads Delta Upsilon with 13-7 and Tau Kappa Epsilon, 12-8.

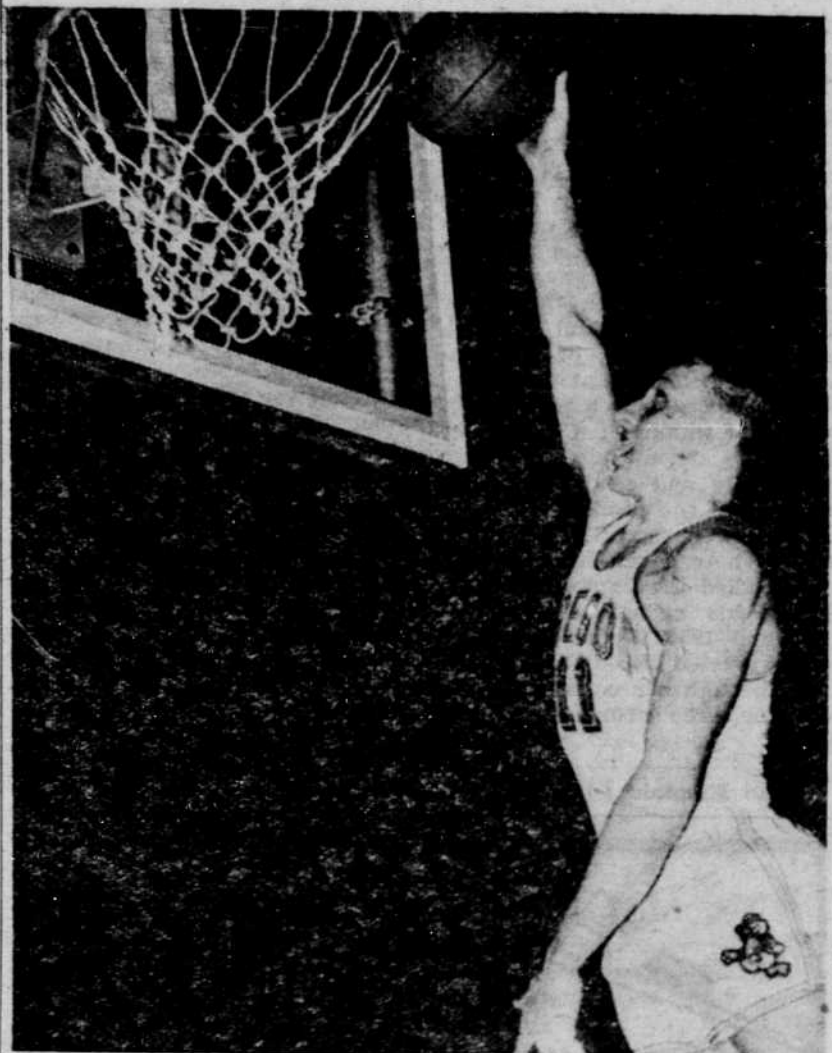
Other Tuesday results were Pi Kappa Alpha over Tau Kappa Epsilon 4-0, Alpha Tau Omega over Lambda Chi 3-1, and Delta Upsilon over Sigma Chi 3-1.

### League standings:

	W	L
Theta Chi	14	6
Delta Upsilon	13	7
TKE	12	8
Phi Kap	11	9
ATO	10	10
PiKA	10	10
Sigma Chi	9	11
Lambda Chi	1	19

Norm Willoughby, Wendy Raser, Lowell Slick, and Harley Sittner, Eugene; Dave Shelby, Albany; Don Delbon, San Francisco, Cal.; Denny Sperry, Springfield; Roger Diddock, Madras; Eli Morgan, Bill Seearce, and Dave Wanaka,

Portland; George Tidwell and Martin Swan, Vancouver, Wash.; Burt Williams, Medford; Wimp Hastings, Bandon; Don Lindland, Oakridge; Vinton Sommerville, Bakersfield, Cal.; and Bob Farries, Lakeview.



JERRY ROSS sparked Oregon as a sophomore last year and figures to do even better in the coming Northern division basketball campaign. Ross, 6'1", plays both forward and guard.

## Three Stars Dominate Conference Offense

LOS ANGELES-(Special)-The Pacific Coast conference's top offensive threesome of Duke Washington, Paul Larson and George Shaw maintained its leadership in the weekly statistics released today by the PCC commissioner's office, while a pair of UCLA backs has taken over top scoring honors.

Washington, speedy fullback for Washington State, was sidelined most of the game Saturday with an injury, but gained 44 yards in three carries to run his season rushing total to 507 yards and an average of 5.5 per play. Bill Tarr, Stanford, has 494 yards and Primo Villaneuva, UCLA, 426.

California T-quarterback Larson threatens to rewrite several conference season records with his throwing arm and last weekend set a new PCC one-game record of 25 completions. This topped the old mark of 23 completions set by his Oregon rival, Shaw, in the Oregon-Cal game two years ago. Larson has completed 93 of 142 passes for 1125 yards and a 65.5 percent completion mark. Shaw is next in line with 73 completions.

Shaw's 1068 yards passing and 177 rushing give him the total offense leadership with 1245 yards to 1117 for Larson and 705 for Villaneuva, who leads in touchdown responsibility with 11. The UCLA tailback has scored nine touchdowns for 54 points to share the scoring honors with teammate Bob Davenport. Jon Arnett, Southern California, and Dick James, Oregon, have eight tallies each.

California End Jim Hanifan has 30 receptions for 367 yards to lead the receivers, while John Stewart, Stanford, has 28, and Jim Carmichael, California, 22. Bob Iverson, Washington State, has intercepted the most aeriels, five, while Bruce Ballard, UCLA, has four.

Jim Withrow, Oregon State, has averaged 41.7 yards on 21 punts to lead the kickers while Bob Heydenfeldt, UCLA, and Jim Contratto, USC, also have excellent marks of 40.4 and 40.3, respectively. Sam Brown, UCLA, is the punt return leader with 235 yards and an average of 26.1, while Larson has the most yardage on kickoff returns, 244, and a 40.7 average.

### Statistics:

	TCB	YG	YL	Net	Avg
Washington, WSC	84	525	18	507	5.5
Tarr, Stanford	101	523	29	494	4.9
Villaneuva, UCLA	64	454	28	426	6.7
Davenport, UCLA	85	442	20	442	5.0
Arnett, USC	67	419	15	404	6.0

	PA	PC	PI	Yds	Pct	Td
Larson, Calif.	142	93	5	1125	65.5	6
Shaw, Oregon	150	73	8	1068	46.8	6
Brodie, Stan.	120	56	11	637	46.6	2
Cox, Wash.	93	47	7	677	49.5	3
Eidam, Idaho	115	43	11	346	37.4	2

	Total Offense	Plays	Rush	Pass	Td	Td
Shaw, Oregon	203	177	1068	1245	8	8
Larson, Calif.	208	8	1123	1117	10	10
Villaneuva, Ucla	102	426	279	705	11	11
Cox, Wash.	131	1	677	678	3	3
Contratto, USC	59	78	536	614	8	8

	Td	Att	Pg	Fg	Fp
Davenport, UCLA	9				54
Villaneuva, UCLA	9				54
Arnett, USC	8				48
James, Oregon	8				48
Larson, Calif.	4	18	12	1	39

	No	Yds	Td
Hanifan, Calif.	30	367	3
Stewart, Stanford	28	480	2
Carmichael, Calif.	22	281	2
James, Oregon	21	324	2
McHugh, Oregon	16	199	
Teverbaugh, Idaho	16	127	1

	No	Yds
Iverson, WSC	5	65
Ballard, UCLA	4	60
Debay, UCLA	3	73
Arnett, USC	3	44
Reeve, Oregon	3	40
Cox, Wash.	3	30
Gary, Idaho	3	6

	No	Yds	Avg
Withrow, OSC	21	873	41.7
Heydenfeldt, UCLA	18	729	40.4
Contratto, USC	19	767	40.3
Albrecht, Wash.	13	468	36.0
Larson, Calif.	18	627	34.8

	No	Yds	Avg	Td
Brown, UCLA	9	235	26.1	3
James, Oregon	12	132	11.0	
Bradley, UCLA	4	127	31.8	
Rath, WSC	6	86	14.3	
Larson, Calif.	9	82	9.1	1

	No	Yds	Avg
Larson, Calif.	6	244	40.7
Young, Stanford	6	160	26.7
James, Oregon	8	155	19.4
Rath, WSC	6	138	23.0
Williams, Calif.	7	129	21.5

# Phi Deltas Take Volleyball Win

Phi Delta Theta sailed easily through the first game and then fought off a second-game Phi Kappa Sigma rally to take 15-7, 16-14 victories in class A IM volleyball Wednesday afternoon.

An early one-point lead was the best the Phi Kap's could manage in the first game, as the Phi Deltas tallied five in one service to pull ahead to stay.

The Phi Delt's had to overcome a 9-4 lead before they knotted the score at 14-14 and collected two points in the overtime to win the finale.

### Theta Chi Nabs Win

Theta Chi rallied to snare the last two games, 15-5 and 15-6, as they handed the Sigma Phi Epsilon B's a defeat. The Sig Eps took the first game, 15-12.

Smooth serving and spiking gave Theta Chi their first win in short order, while the last tilt was highlighted by extended volleying and ended in a race against the clock.

The first game see-sawed back and forth, with neither squad gaining an advantage until the closing minutes.

## Washington Works On Pass Defense

SEATTLE-(AP)-Coach Johnny Cherberg and the Washington Huskies worked here on defending against the passes expected from California's Paul Larson in the Pacific Coast conference football game here Saturday.

Cherberg recalled Larson hit on 10 of 12 passes in the game with California a year ago, netting 240 yards.

"But I don't think Larson will be able to do that again," the coach commented.

### Ping-Pong Playoff Set

The deadline for the first round of the current ping-pong tournament is Thursday, November 4. Any games not completed on schedule must be forfeited. A check may be made at the YM-CA office concerning opponents' telephone numbers or addresses.

### Hale Kane Triumphant

Hale Kane showed up with enough men to play two volleyball games, but Philadelphia House, their opponents in the scheduled class B tilt, failed to field a team and forfeited.

### Sigma Nu Easy Victor

Sigma Nu had little trouble gaining an IM "B" league victory as they downed Delta Upsilon by 15-2 and 15-5 margins.

In the first set Sigma Nu played a good defensive game as Delta Upsilon put up a good battle. Although the score of the second set was somewhat closer, Sigma Nu won with little difficulty.

### Dorm Counselors Win

The Dorm Counselors racked up a win in A league action as they won by forfeit from Gamma hall, which failed to floor a team.

### Phi Psi's Take Forfeit

The string of forfeits which has plagued IM action was kept in tact by the Sigma Alpha Epsilon B team as they failed to show up for a game with Phi Kappa Psi. The Phi Kappa Psi team held a scrimmage with their A team instead.

**BRING THEM IN FOR REPAIR**

Expert Workmanship for Added Comfort and Longer Wear!

Quality Work!  
Fast Service!

**CAMPUS SHOE SHOP**  
843 East 13th Ave.

Tonight and every Thursday!

## "Duck Feats"

A TV Show Featuring Our Oregon U. Coaches and Players!

Thursday at 6:45—KVAL

Sponsored by **Fennell's Men's Wear** On the Campus

*Eugene's Most Modern Sandwich Shop*

**RUSH INN**

ON THE CAMPUS - 854 E. 13th