

Phi Deltas Down Betas In Volleyball Opener

Phi Delta Theta, after winning the IM football crown Monday, continued its dominance in IM action by coming from behind in the second game Tuesday to clinch two sets from Beta Theta Pi 15-4 and 15-12.

The Phi Deltas were completely in charge during the first game as their offense registered a stifling barrage of counters to padlock the tussle. After trailing in the second set Captain Bob Wagner led his team back to quell the Betas' rally.

Sig Eps Down Deltas

Sigma Phi Epsilon, after dropping the first set 15-8, opened the season by upsetting Delta Tau

Four Teams Win In Bowling Trys

In Inter-fraternity bowling action Tuesday night Pi Kappa Alpha tipped the Lambda Chi's, Alpha Tau Omega bowed to Tau Kappa Epsilon, Theta Chi rolled over Delta Upsilon, and Sigma Chi topped Phi Kappa Sigma.

The Pi Kap's with the aid of George Weber won 4-0 over Lambda Chi Alpha. High singles of 174 and 160 were rolled by Weber and Jerry Maxwell, respectively.

Alpha Tau Omega bowed to Tau Kappa Epsilon by a 4-0 score. High single for the Tekes was 166 bowled by Pat Eaton, while Scott Paige bowled 171 high single for the ATO's.

Theta Chi's strong bowling team won 3-1 over Delta Upsilon. A high single score of 203 was bowled by Art Weatherford of the winners.

Sigma Chi, with the help of Cece Hodges, beat Phi Kappa Sigma, 3-1. A high single of 200 was bowled by Sam Sorensen and a high single of 180 was bowled by Hodges for Sigma Chi.

UCLA Eleven Gets Vacation

LOS ANGELES-(AP) - Coach Red Sanders gave his UCLA squad a day off for their good 72-0 behavior against Stanford Saturday. Then he praised his boys in a way that won't inspire confidence in the teams his undefeated Bruin bonecrushers will be playing.

Sanders told football writers at Los Angeles Monday that UCLA put out one of "the greatest team efforts I've ever seen." He said it was remarkable how the Bruins changed from offensive to defense football "whenever we intercepted a pass or returned a punt. And the downfield blocking was tremendous."

Oregon State faces the Bruin onslaught in Corvallis Saturday, then California, Oregon and USC in order.

IM Schedule

Wednesday

- 3:50 Alpha Tau Omega A vs. Theta Chi A, court 40
- Phi Kappa Sigma A vs. Tau Kappa Epsilon A, court 43
- 4:35 Hale Kane A vs. League Eagles A, court 40
- Philadelphia House A vs. Campbell Club A, court 43
- 5:15 Nestor Hall A vs. Hunter Hall A, court 40
- French Hall A vs. Cherney Hall A, court 43

Sports Staff

Desk Editors: Don Lovett and Allen Johnson.

Staff: Jack Marsh, Elliott Carlson.

Delta in the final two sets 15-12 and 15-7. The Deltas, due to their win in the first frame, were in a position to defeat the Sig Eps in the second match as the lead wavered between the two teams. However, the Sig Eps were not to be denied and under Captain Donn Sullivan's leadership they went ahead in the third set and won by a commanding margin.

Lambda Chi Wins

Lambda Chi Alpha opened the intramural volleyball season Tuesday with two straight wins over Phi Sigma Kappa.

The Phi Sigs had only three men at the start of the first game, and trailed 8-0, when the rest of their team arrived. Lambda Chi went on to win, 15-0, and finished up with a 15-7 victory in the final game.

Sigs Top Phi Psis

Phi Kappa Psi recorded a 15-3 win over Sigma Chi in the first game of their set yesterday afternoon, but Sigma Chi came back strong in the final two games to win the set, 15-8 15-9.

The final game was very close until the last few points, when Sigma Chi rallied for their deciding game.

SAE's Score Triumph

Sigma Alpha Epsilon downed Phi Gamma Delta in the best two out of three in their volleyball openers Tuesday afternoon.

The Fiji's jumped ahead in the first game to record their only win 15-0. SAE came back strong with a 15-2 triumph. In the final game the Fiji's took an early 6-0 lead, but SAE rallied to tie the score at 8-8.

Spartan Boss Sees Victory

SAN FRANCISCO - (AP) - Coach Bob Bronzan says his San Jose State football team has a fair chance to beat Oregon at Eugene Saturday.

"We are beginning to click both in running and passing," he said. "Last week's open date gave us a chance to iron out a lot of rough spots. We've been concentrating on defensive moves against the good hook passes thrown by Oregon's George Shaw. If we come up with a top all-around team effort, I think we can win."

Because of a time limit, the game became sudden death at this point, with the first team to gain a two point advantage the winner. SAE took four of the next six points for its final 12-0 advantage.

DU's Win by Forfeit

Delta Upsilon was enabled to score a forfeit victory over Sigma Nu as the latter failed to appear for the opening of the IM volleyball season.

Frosh Gridders See Daily Action

Oregon's footballers of the future, the 1954 freshman team, continued its second week of workouts Tuesday afternoon under the watchful eye of frosh mentor Bill Hammer.

Scrimmage drills, calisthenics, punting, play-calling, extra-point kicking, kickoffs and passes were all a part of the session. Assistant coaches Tom Winbigler, Cece Hodges and Bob Baisch administered the practice.

Sixteen 1954 Shrine all-star players are in the Duckling camp. Quarterbacks Jack Henkel and Don Graham, halfbacks George Krupicka, Bob Woods, Jim Shanley, Jim Williams, and fullbacks J. C. Wheeler and Chuck Withers head the half-back parade.

In the line are Shrine representatives Milt Blevins, Steve Bigelow, Tom Hale, Norm Chapman, Bob Reiter, Vern Scott, Jerry Collins and Hal Duffy.

Duffy and Graham led the punters in action Tuesday, getting off consistent 40-50 yard boots.

Patronize Emerald Advertisers

Prouty's Shoe Service

- * Invisible Resoling
- * Refinishing
- * Repairing
- * Dyeing

K. B. PROUTY
970 Oak St.
Eugene, Ore.

Ducks Continue Daily Workouts

With the exception of Captain Ron Pheister, the Oregon Webfoots continued heavy workouts on the soggy practice field Tuesday afternoon.

Still suffering from a rib injury incurred in the USC contest, Pheister took a light, no-pad workout. Art Weber, junior center, filled in at the pivot spot on the front line.

Junior Guard Jim Potter, out Monday with an ailment, was back in full equipment for the hour-and-a-half session.

Line coach Vern Sterling ran his tackle and guard corps through blocking assignments and double-teaming techniques while the backfield men tuned up on running maneuvers.

Offensive dummy scrimmage

was the main order of the day as George Shaw directed the regulars against the Blue offensive eleven.

Backs Tom Crabtree and Larry Rose showed up well on the offensive side. Crabtree turned in some fancy runs from his half-back post and Rose drew praise from the coaches for his hard plunging.

For the most part, the lineup remained constant with Dick Mobley and Hal Reeve at ends, Keith Tucker and Lon Stiner at tackles, Jack Patera and Jerry Nelson at guards and Weber in the middle.

Crabtree, Rose, Dick James, Lloyd Powell and Walt Gaffney all saw action in the running department.

WHY

Pay a Penalty for Being Under 25?

If you are married, you can now have public liability and property damage auto insurance with one of the finest companies in the West for \$15.20 per 6 months.

You can also save up to 33% on collision and comprehensive.

Don't throw your money away. Get the facts.

Jerry Brown
Agent
Res. Ph.
4-2957

Mayflower

962 OAK, EUGENE

HOME OFFICE IN SEATTLE

PH. 4-9444

Like Plaids?

We've Scads!

all ARROW-labeled for comfort and style



Fall without a plaid shirt? Get off it, man! It's a basic item on every campus, and Arrow has plaids aplenty for every man... right now! They're bright, bold, neat or quiet. Why not fall into your campus dealer and slip on a new Arrow plaid shirt. They're good for the soul... and relaxing on the budget. Priced at \$5.00 up.

ARROW CASUAL WEAR

SHIRTS • TIES • UNDERWEAR • HANDKERCHIEFS

FENNELL'S



Only a
LEVI
for the
WHISKERINO!

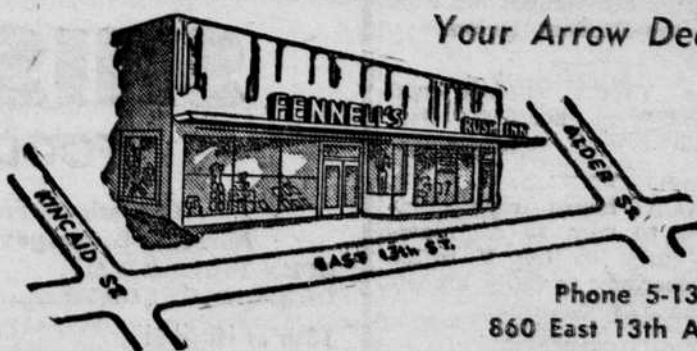
\$3.65

BIG SIZE SELECTION

FENNELL'S

ON THE CAMPUS

Your Arrow Dealer



Phone 5-1363

860 East 13th Ave