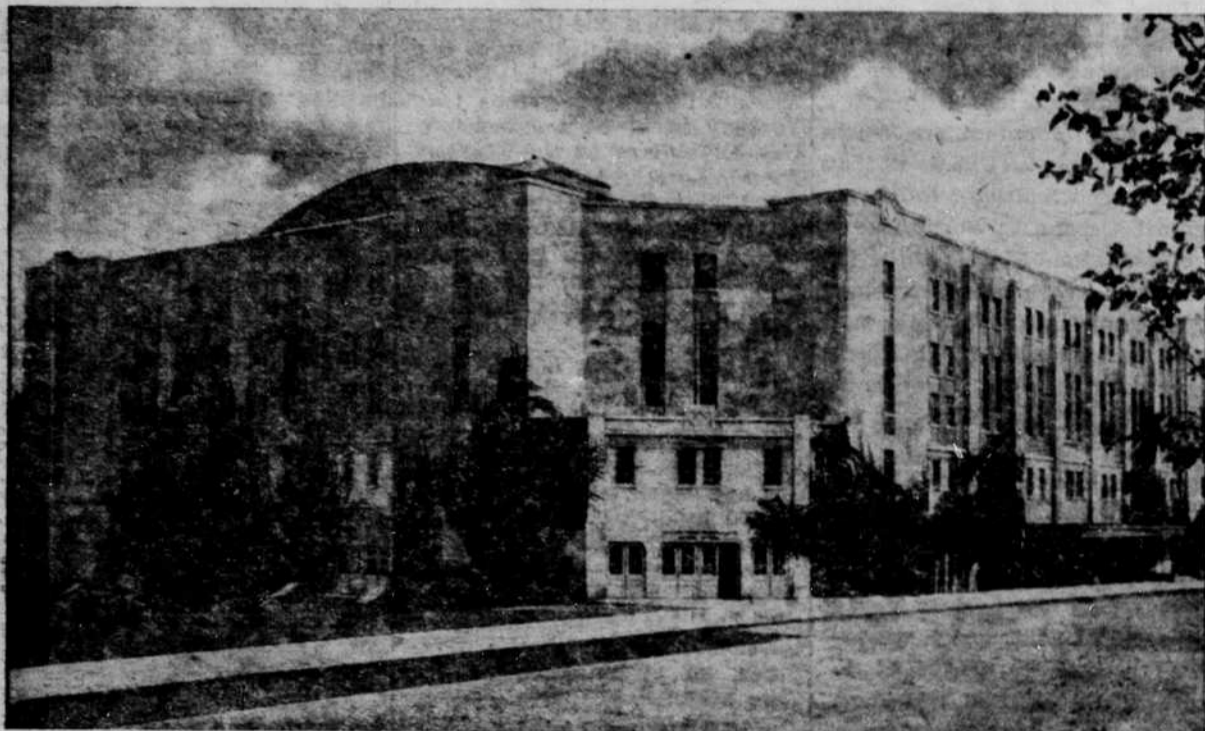


Remodeled Mac Court Sees Side Posts Out, Balconies In



OREGON'S McARTHUR COURT, currently undergoing extensive alterations, will seat 10,000 people when it is re-opened for the 1954-55 basketball season. The remodeling, which includes the addition of east and west balconies, will cost about \$230,000, or \$10,000 more than the original cost of the building. McArthur court is unique among college pavilions in that no tax funds were used for its construction.

By Jerry Claussen
Emerald Reporter

McArthur Court, Oregon's "Igloo" field house of the 1920's, will be fit for kings of the basketball court after its extensive remodeling and seating additions are finished in the near future.

Biggest improvement to the 27-year-old building is the addition of balconies at the east and west sides suspended above the old second-floor level seats. With two balconies, one above the other, added to each side of the playing floor, seating capacity in McArthur Court will be raised from approximately 8200 to 10,000. This will make it the tenth largest basketball court in capacity in the nation, rated right behind Oregon State's \$1,800,000 coliseum, according to athletic department officials.

In order to place the balcon-

ies above the second floor seats, some of the upper part of the building had to be almost completely rebuilt. To take the load of the balconies, two wooden trusses have been placed over each side of the building and attached to the old interior wood trusses. This takes the building weight off the side posts and puts it all on the corner posts of the building.

Good View From Sides

Removal of the side posts will give fans an unobstructed view from the side seats, an improvement long overdue for games and other events which attract nearly 500,000 spectators to McArthur Court annually. With the corners taking about 10 times more weight than prior to the building changes, concrete bases 13 feet square have been put in to help absorb the weight.

New stairs have been built from the main floor to the second floor with new steel towers on the four corners of the building to hold stairways to the outside and up to the new balconies.

Lower balconies will have six rows while the top balconies will contain four rows of seats which spectators may reach from an aisle along the rear of each balcony. The balcony angle will be quite steep and the view of the playing floor will be improved.

Cost \$13 a Seat

Cost of remodeling will be about \$230,000 or \$13 per new seat. Construction of the building was begun in the early 1920's. After several delays the concrete and steel structure was finally completed in 1927, at a cost of about \$220,000.

Since that time, only one major change has been made. Between 1949 and 1953, new roll-away bleachers were installed on the ground-floor sides of the playing floor and theater-type seats were put in portions of the balcony. All original costs of the building have come from student fees and donors, not one cent having ever come out of tax funds, according to Ted Bouck, athletic business manager.

Work Began April 1

Although the inside is nearing

completion, the outside stairways will still require another month of work in order to get the building completely done for the 1954-55 hoop season. Work was begun last April 1.

The revamped plant's first formal showing will be Oct. 19, during the inauguration of University President O. Meredith Wilson in conjunction with University Charter Day. Basketball action will begin Dec. 3 when Oregon plays Santa Clara and Oregon State meets California in a doubleheader.

Patronize Emerald Advertisers

Theater Announces Cast for 'Bernardine'

Scott Lehner, junior in speech, will play the leading role of Buford Weldy in the University theater's production of "Bernardine."

Frederick J. Hunter, assistant professor of speech, who will direct Mary Chase's latest work, has announced the rest of the cast for the show. "Bernardine" opens a six performance run on Oct. 29.

Lehner has been seen by University audiences in 11 roles since he came to Eugene in 1952. Last summer he played the likeable but lazy Ensign Pulver in "Mr. Roberts," Cato Dove in the period farce "Forbidden Fruit," and had roles in the other summer productions. Last year he played the sly and mischievous Joxer Daly in "Juno and the Paycock" and the year before he was Harry Beaton in "Brigadoon" and Tony Lumpkin in "She Stoops to Conquer."

Pat Johnson, senior in speech, will play Ruth Weldy. Miss Johnson was seen last year as Mercy Lewis in "The Crucible." Loretta Mason, junior in speech, will play Enid Lacy, the "Bernardine" of the show. Miss Mason played Penelope Toop in "See How They Run."

Other cast members include Bruce Holt as Arthur Beaumont, Gail Monte as Selma Cantrick, Gloria Begenich as Jean Cantrick, Sonja Dalton as Helen, Joe Malanga as Tub Griner, Darrell Keeney as Carney, Lowell Slick as Dink Olson, Allen Ward as Vernon Kinswood, Jack Baker as McElroy, Neil Cellers as Gibbs, Gordon Seiple as Fudge, and Denice Kenyon, Harvey Madding and Don Brown.

UO Mothers, Dads To Meet Jointly

The Mothers' Club and the Dads' Club of Eugene will hold a joint meeting Wednesday at 7:30 p.m. in Gerlinger hall.

Main speaker of the evening will be University President O. Meredith Wilson. Officials from the student affairs office will discuss scholarships and student life on the campus.

Mel Gustafson is president of the Dads' club, and Mrs. Paul E. Price is the president of the Mothers' club.

Portland State's Enrollment Up 743

PORTLAND (AP) - Portland State college enrollment at the close of registration is 2363, more than 44 per cent more than last fall's total of 1620.

The state board of higher education had expected an increase of only about 300 students. When the increase turned out to be more than 700, the board gave the college the equivalent of eight more fulltime instructors.

Whiskerino Ticket Sale Begins Monday Noon

Tickets for the Sophomore Whiskerino will go on sale at the Co-op and the Student Union, Monday at noon. They may also be purchased from freshman girls who will be giving flying speeches at men's living organizations during the dinner hour Monday through Thursday.

Campus Briefs

● Barbara Hogard, Carolee Witt, Gwendolyn Ellis, Joanne Burns, William Stoner, George Low and Elliot Carlson were confined to the infirmary Thursday, according to hospital records.

● Old and new members of the Student Union dance committee are to meet Monday at 4 p.m. in the SU, according to Don Paevk, chairman.

● There will be no Friday at Four in the Student Union fish-bowl today.

● "Ichabod and Mr. Toad," will be the movie shown at 2:30 and 5 p.m. Sunday in the Student Union ballroom. A Walt Disney technicolor production, the film has Basil Rathbone and Bing Crosby as narrators. Admission is 30 cents.

● Canterbury club, Episcopal student group, will meet in Corvallis Sunday at 5:30 p.m. with the OSC Episcopal group. Students wishing transportation are to call Father Ellis at 5-7908.

MAYFLOWER STARTS SUN.
ELEVENTH AT ALDER.
FLAMING PASSIONS and VIOLENCE IN LUSTY, LAWLESS ROME!
All hail the most honored picture of the year...
M-G-M presents William Shakespeare's
JULIUS CAESAR
Starring
MARLON BRANDO
JAMES MASON
JOHN GIELGUD
LOUIS CALHERN
EDMOND O'BRIEN
and
GREER GARSON
DEBORAH KERR
An M-G-M Picture
"YEAR'S BEST PICTURE!"
—National Board of Review
FIRST TIME AT REGULAR PRICES
THRU SAT. — "GLEN MILLER STORY"

HEILIG STARTS SUN.
LUSTY, ROUSING GIRL-STEALING MUSICAL!
CINEMASCOPE
SEVEN BRIDES FOR SEVEN BROTHERS
Starring
Jane Powell • Howard Keel Color by ANSCO
with **JEFF RICHARDS • RUSS TAMBLYN • TOMMY RALL**
FRI. & SAT.: "A Bullet Is Waiting"—Jean Simmons
"Coroner Career"—Randolph Scott

THE EUGENE DRIVE-IN THEATRE
Ends Sat.—Show Starts 6:30
Don't tell who is the "betrayer" in this fascinating mystery drama of the secret three!
CLARK GABLE
LANA TURNER
VICTOR MATURE
M-G-M's
BETRAYED
IN COLOR
2nd TOP HIT!
RIDE A RECKLESS MILE
TWO COLOR HITS
Sunday—Show Starts at Dusk
WARNER BROS. PRESENTS
WILLIAM A. WELLMAN'S
"THE HIGH AND THE MIGHTY"
CINEMASCOPE
WARNERCOLOR
STEREOPHONIC SOUND
STARRING
JOHN WAYNE • CLAUDE RAINS • LARAINE BENDIS • ROBERT TREVOR • PHIL BRUNSON • ROBERT DAVID
JAN STERLING HARRIS • NEWTON BROWN
with
PAUL KELLY • SIDNEY BLACKMER
and introducing
DOE AVEDON • KAREN SHARPE • JOHN SMITH
A WAYNE-FELLOWS PRODUCTION Screen Play by ERNEST K. GANN
Directed by
WILLIAM A. WELLMAN DISTRIBUTED BY WARNER BROS.
Music Composed and Conducted by Dimitri Tiomkin
2nd HIT in COLOR!
Captain
JOHN SMITH
and **POCAHONTAS**
in PRITTE COLOR
Released thru UNITED ARTISTS
2860 WILLAMETTE
EUGENE DRIVE-IN THEATRE Phone 4.4152

See The World Famous
OLYMPIAN
The typewriter with these special features:
● FOUR EXTRA CHARACTERS
● NEW HALF-SPACE FEATURE
at Eugene's Exclusive Dealer
Stevens Typewriter Co.
112 East Broadway Phone 4-9115