

Robinson Direct Miller's 'Crucible'

"The Crucible," the powerful drama by Arthur Miller which opens its six-performance run to-night at the University theater under the direction of Horace W. Robinson, will be shown for the first time to any West Coast audience.

Van Boskirk Heads Cast

Heading a large cast is Don Van Boskirk, senior in speech, who plays the role of John Proctor. During the course of the play, Proctor is accused and convicted of witchcraft.

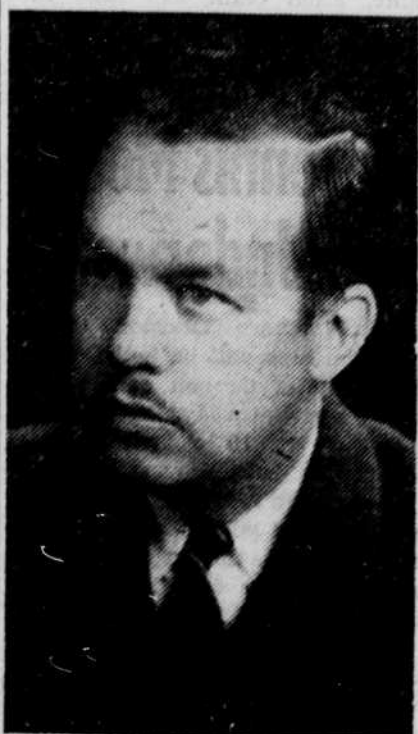
Abigail, the girl whose accusations are believed, will be played by Donna De Vries, freshman in liberal arts, who makes her theater debut with this role. Elizabeth Proctor, Sandra Price, senior in speech, tells her first lie to protect her husband, and in doing it condemns him.

Pearce Plays Judge

Other cast members include Gerry Pearce, as Danforth, the narrow-minded judge. Hale, the judge from a neighboring town who believes Proctor is innocent, will be played by Clarence Suiter, senior in speech. Mary Warren, Proctor's servant, who also turns on him during the climactic courtroom scene, will be played by Sally Mollner, junior in speech.

Completing the cast are: Joan Pearce, graduate in speech, as Tituba; Fred Whited, as Parris; Marilyn Stratford, sophomore in speech, as Betty Parris; Janet Kneeland, freshman in liberal arts, as Susanna; Joella Wood Cheek, sophomore in speech, as Ann Putnam, and Ben Schmidt, senior in speech, as Thomas Putnam.

Other cast members include: Pat Johnson, sophomore in speech, as Mercy Lewis; Otilie T. Seybolt, associate professor of speech, as Rebecca Nurse; Winston Rust, junior in speech, as Giles Corey; Tom Gaines, sophomore in speech,



HORACE W. ROBINSON
Directs "The Crucible"

as Francis Nurse, and Bruce Holt, sophomore in speech, as Ezekiel Cheever.

Rounding out the cast are: Joe Malengo, junior in speech, as John Willard; Bill Cheek, junior in political science, as Judge Hawthorne; Diane Swanson, sophomore in education, as Sarah Good; and Ula Mae Hostetler, freshman in liberal arts, as Martha Corey.

Students Design Settings for Play

The University theater's production of Arthur Miller's new drama of the Salem witch trial, "The Crucible," will feature the first student designed set of the current season. Paul Minty, junior in speech, designed the unusual unit setting.

Featuring two levels, the setting is bounded with realistic beams on three sides. An upper level, reached by a movable flight of stairs, affords another acting area for the production. The lighting, designed by Phil Sanders, senior in speech, is also a student project. Sanders has employed the use of pools of colored light and is using strong colors on the sky background, as well as some specially designed projections.

Crew for the show includes Helen Robertson, freshman in liberal arts, stage manager; Ron Morgan, junior in speech, properties, and Dalece Peterson, freshman in speech, electrician.

'Crucible' Represents Miller's Latest Drama

Arthur Miller, author of the University theater's final production of the 1953-54 season, "The Crucible," is a one-time winner of the Pulitzer Prize for play-writing and a two-time winner of the Drama Critics Circle award.

His most famous work, "Death of a Salesman," won for him the coveted Pulitzer Prize and Drama Critics Circle award. The play, a tragedy about the common man, was produced on this campus last year by UT.

Miller's first work to win public acclaim was "All My Sons," in 1947. This play won for the young American author the Drama Critics Circle award. It is the story of an American father who sold faulty airplane parts during the second World War. "All My Sons" was rooted in Miller's "conviction that social responsibility transcends self-interest."

Miller is regarded by critics today as the second hope for the survival of significant play-writing in America. Tennessee Williams, author of "Streetcar Named Desire," "The Glass Menagerie," "Summer

and Smoke" and "Camino Real," is listed as the first.

"The Crucible" represents Miller's latest dramatic effort. It played on Broadway with a cast headed by Arthur Kennedy, Beatrix Straight and Madeleine Sherwood. The play was runner-up to last year's Drama Critic award winner, "Picnic." "The Crucible," a factual presentation of the Salem witchcraft trials, was one of the most discussed new plays on Broadway. This University theater production will be the first production of "The Crucible" since its original Broadway run.

Classifieds

FOR SALE: Taylorcraft Airplane, 2 place; relicensed April, engine overhauled, good fabric. \$650. Ph. 5-9363 or 5-9366. 5-21

WANTED: Ride east (as far as possible) after exam week — will share expenses. Doug Lind, Rm. 3, Science bldg. 5-21

FOR SALE — New suit - light color - medium size. \$23.65. Sigma hall after 6:30 p. m. 5-24

FOR SALE — Electric organ, Estey make, good condition. \$400. Terms, apply 1240 Beech St. 5-25

HOUSING WANTED — Teaching couple, young child; desire rent or sub-let 2-bedroom furnished housing, near campus, summer session, June 17 to Aug. 21, to \$60. John Parker, Box 301, Chewelah, Wash. 5-25

Campus Calendar

Noon Larsen Lunch	110 SU
Ital Tbl	111 SU
Emer Staff	112 SU
4:00 Larsen Lect Brs Rm	SU
6:30 Amer Soc of Church	
Hist Din	113 SU
7:30 Amer Soc of Church	
Hist Meet	334 SU
8:00 Creative Arts Wrkshp	
Ballrm	SU

Best Freshman Named By Math Department

Bruce Bloomfield, freshman in liberal arts, has been selected by the University mathematics department as the outstanding freshman mathematics student.

In recognition he has been awarded a copy of the Chemical Rubber company mathematical tables through the courtesy of the Chemical Rubber company.

Air Force Officer Gets Reassignment

Maj. N. N. Mihailov, assistant professor of air science and public information officer for the University ROTC, has been reassigned to air force duty in the Far East, after four years duty at Oregon.

Besides his work here, Major Mihailov was adviser to the air force drill team, and this year founded the Oregon chapter of the Air Command Squadron, honorary for basic students in AFROTC.

Four other members of the AFROTC staff will end their ROTC tours of duty at the end of the academic year. They are Lt. Col. Sam E. Sheffield, Maj. Grant R. Smith and Capt. Robert A. Laurence, assistant professors of air science, and M.Sgt. J. O. Bateman, student records clerk.

Colonel Sheffield is detachment executive and Captain Laurence is the adjutant. They will handle the public information duties for the rest of the year. Next year the new adjutant will also be the PIO, according to Colonel Sheffield.

Colonel Sheffield and Sergeant Bateman are also completing four-year ROTC tours of duty; Major Smith and Captain Laurence will leave after a three-year tour. AFROTC duty was changed from four to three years this year.

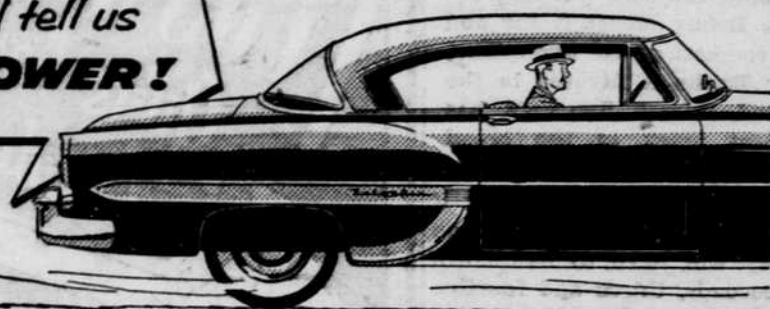
Math Professor To Lecture Twice

Professor M. A. Girshick of Stanford university will deliver two mathematics lectures this afternoon and Friday in Deady 102 at 4 p. m.

His topic for today's lecture is "Decision Theory," with "The Invariance Principle in Decision Theory" slated as his theme for Friday's lecture.

At the first touch of your toe...you'll tell us
IT'S THE NEWEST THING IN POWER!

Come drive it and you'll say—



Chevrolet

out-accelerates,

out-performs, out-saves

all other leading low-priced cars!

Come in and get behind the wheel of this great new Chevrolet. You'll soon be telling us that Chevrolet's new high-compression power—highest of any leading low-priced car—makes it far and away the top performer in its field!

Road-test it! Street-test it! Hill-test it!

Chevrolet is powered by the highest-compression engine in its field—an engine designed, engineered and built to deliver more performance with less gas.

And remember—Chevrolet gives you extra value as well as extra performance—for again this year it's the lowest-priced line of cars.

Come in . . . take the wheel of a Chevrolet at your earliest convenience.



GO CHEVROLET!
...and get the most advanced engine in the low-price field

Now's the time to buy! Get our BIG DEAL! Enjoy a New Chevrolet!
YOUR CHEVROLET DEALER