

# Ducks Head South For California Tilt

(Continued from page one)

Larson's counterpart at quarterback for Oregon will be George Shaw. General George has not set any passing records this season but he has been the Webfoots' leading player all year long and on several Saturday's has been nothing short of terrific.

In their final home practice session Thursday afternoon the Ducks worked mainly on sharpening up their offensive formations. Several players are reported on the injury list but most of them are expected to see some action against the Bears.

Casanova will probably open with the following line-up Saturday: John Reed, left end; Hal Reeve, left tackle; Ken Sweitzer, left guard; Ron Pheister, center; Jack Patera, right guard; Keith Tucker, right tackle; Dick Mobrey, right end; George Shaw, quarterback; Dick James, left half-back; Walt Gaffney, right half-back; and Cece Hodges, fullback.

# Campbell Club Scores Volley Win

Campbell Club's "A" team downed Philadelphia House Thursday in the only volleyball game played. The other two games ended in forfeits, with Hale Kane "A" winning over the Legal Eagles "A" won by a 15-11 score.

Campbell Club had to go to a third game to win their contest with the Phils, but they played very fine ball all the way. Jim Katakura and Larry Beckius were the individual stars for the Campbell Clubbers, Beckius being especially hot on his serving, and Katakura showing fine all around play.

The victors won the opening game easily, 15-8, but in the second game seemed to run into a solid wall, as Philadelphia House won by a 15-11 score.

The third contest cinched the match for Campbell Club, as they rolled over the Phils, 15-4.

## Sports Staff

Desk Editor: Bob Robinson.  
Staff: Sam Vahey and Bruce Tennant.

Team	W	L	T	Pct.
Stanford	5	1	0	.833
UCLA	5	1	0	.833
USC	4	1	1	.800
California	2	2	0	.500
Washington	2	2	1	.500
WSC	2	3	0	.400
Oregon	2	4	0	.333
Oregon State	1	5	0	.167
Idaho	0	3	0	.000

**CASANOVA**  
This week's guest selector is Head Football Coach Len Casanova. The guests still have the best advantage with a 51 right, 16 wrong record, a percentage of .761. Buzz Nelson boasts the best percentage for the sports writers with .747, compiled from a 56-19 mark.

## This Week's Predictions

GAME	Casanova	Nelson	Karr	White	Steen	Vahey
Percent	.761	.747	.720	.707	.682	.680
Oregon-Cal	Cal 19-13	Oregon 26-20	Oregon 26-20	Oregon 26-17	Cal 28-13	Cal 14-13
OSC-WSC	OSC 26-12	WSC 19-7	OSC 13-7	WSC 21-0	WSC 19-13	WSC 19-13
Wash-UCLA	UCLA 20-14	UCLA 28-13	UCLA 27-6	UCLA 21-7	UCLA 28-14	UCLA 28-14
Mich St.-Mich.	Mich. 21-7	Mich. St. 13-7	Mich. St. 22-6	Mich. St. 19-14	Mich. St. 19-12	Mich. St. 19-12
LSU-Miss St.	Miss. St. 13-7	Miss. St. 21-0	LSU 34-14	LSU 21-7	Miss. St. 21-7	Miss. St. 21-7
Army-Penn	Penn 21-20	Army 7-3	Penn 13-12	Army 14-13	Army 19-6	Army 19-6
N'West-Ind.	Indiana 27-26	N'West 14-7	N'West 27-7	N'West 29-13	N'West 14-0	N'West 14-0
Ill.-Wis.	Ill. 13-0	Ill. 27-14	Ill. 28-6	Ill. 21-7	Ill. 34-7	Ill. 34-7
Neb.-Colo.	Colo. 13-12	Neb. 19-14	Colo. 26-14	Neb. 35-14	Colo. 14-13	Colo. 14-13
Price-Yale	Yale 7-0	Yale 20-6	Yale 13-0	Princc. 14-13	Yale 7-0	Yale 7-0

## SPORTS FARE

Friday, November 13  
VOLLEYBALL

3:50, Court 40, Beta Theta Pi A vs. Chi Psi A, Court 43, Phi Delta Theta A vs. Sigma Chi A.  
4:35, Court 40, Alpha Tau Omega A vs. Pi Kappa Phi A, Court 43, Sigma Alpha Epsilon A vs. Tau Kappa Epsilon A.  
5:15, Court 40, Pi Kappa Alpha A vs. Delta Tau Delta A, Court 43, Sigma Nu A vs. Delta Upsilon A.

## NORTH END Drive in theatre

Sunday thru Tuesday

### 5000 Fingers of Dr. T.

with Peter Lind Hayes and Mary Haley

### plus Carson City

Starring Randolph Scott

Both Features in Color  
Show starts at 6:00 p.m.

## EUGENE DRIVE-IN

STARTS SUNDAY

UNIVERSAL-INTERNATIONAL Presents  
JEFF CHANDLER  
MARILYN MAXWELL  
ANTHONY QUINN  
SUZAN BALL

## "EAST OF SUMATRA"

JOHN SUTTON · JAY C. FLIPPEN

2nd TOP HIT

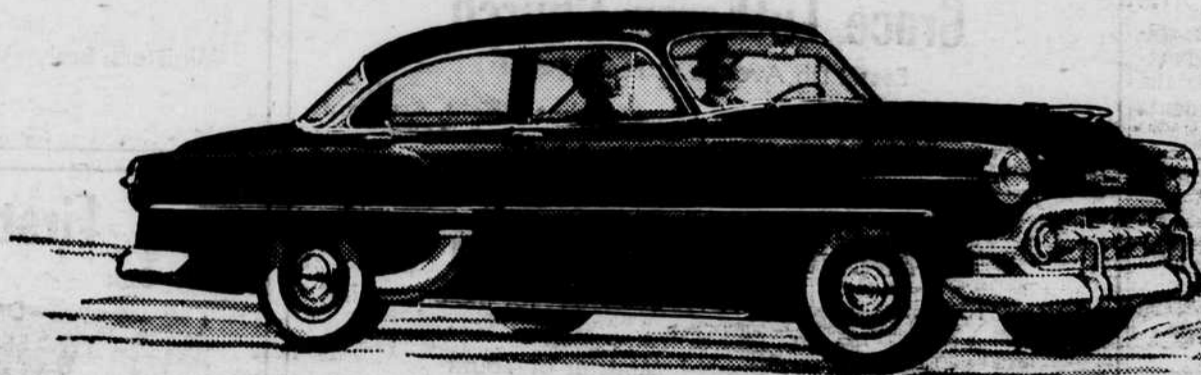
## M-G-M presents MAIN ST. TO BROADWAY

TOP STARS OF SHOW BUSINESS!

2860 WILLAMETTE  
EUGENE Phone 4.4152  
DRIVE-IN THEATRE

Here are two points to remember when you buy a car! . . .

**CHEVROLET VALUE** is the **HIGHEST**  
**CHEVROLET PRICES** are the **LOWEST**  
of any line in its field!



Chevrolet's thrilling "Two-Ten" 4-door sedan. With 3 great new series, Chevrolet offers the widest choice of models in its field.

See it, drive it, and you'll know that it alone brings you all these features of highest-priced cars at the lowest prices and with such outstanding gasoline economy!

Yes, you get more car for less money in Chevrolet!

More beauty, inside and out, with the widest choice of body-types and colors in its field.

More driving thrills, with either of Chevrolet's two great high-compression Valve-in-Head engines!

More riding smoothness, more road-stability and more safety protection with this stronger, heavier, longer lasting car!

More value throughout, when you buy, while you drive, when you trade!

Come in; confirm these facts; and you'll choose Chevrolet . . . America's finest buy, America's most popular car!

Combination of Powerglide automatic transmission and 115-h.p. "Blue-Flame" engine available on "Two-Ten" and Bel Air models . . . Power Steering and E-Z-Eye Plate Glass available on all models . . . at extra cost.



**MORE PEOPLE BUY CHEVROLETS THAN ANY OTHER CAR!**

**SEE YOUR CHEVROLET DEALER FOR ALL YOUR AUTOMOTIVE NEEDS!**

Conveniently listed under "Automobiles" in your local classified telephone directory