

Duck Tracks

By Sam Vahey
Emerald Sports Editor

Press releases from Oregon State College point out the fact that the Beavers will miss sorely next fall the services of six three year lettermen who are not around any more from last year's varsity football eleven. With the loss of these six, and eight other seniors who graduated, OSC will field, generally speaking, an inexperienced squad.

No longer around to pack the ball at the fullback slot is losing Sam Baker, considered one of the finest fullbacks in OSC history. Also on the missing list are Jim Cordial and Bill Story, two of the west coast's best defensive ends. Doug Hogland, Cal Moore, Clarence Womack and Fred Burri, are all regular linemen who will be sorely missed.

Still Fairly Well Fortified

But even though the graduation line has taken such a deep cut in the Beaver gridiron squad, the Orange and Black will still have a fairly well fortified eleven. John Witte and Bob Hartman could develop into two of the best tackles in the business on the coast. Bill Johnson and team Captain LaVerne Ferguson will be around to bolster the middle of the line at the guard positions.

In the backfield, the Aggies will have Jack Peterson, Jack Pinion, and Wally Jackson. Jim Withrow, who handled most of the quarterbacking duties for OSC in 1952 will also be back to fill the airways.

Although this isn't too impressive an array of returnees, the Oregon State spirit is reported to be high; and as John Eggers, OSC athletic news director, points out, "Kids who like to play football can sometimes surprise."

OSC's coaching staff will stay the same as last year. Kip Taylor is the head football man in Corvallis, assisted by Len Younce, line coach, and Ward Cuff, backfield coach.

An interesting event on OSC's fall football schedule, which, by the way, will be a tough one, is the dedication of the Beaver's new Bell field stadium during the Homecoming weekend when Washington State plays in Corvallis.

Idaho Coach Grooms 60

Elsewhere in the Northern Division, Idaho Coach Babe Curfman greeted somewhat like 60 prospects the first week of gridiron practice. Heading the list of veterans was Mel Bertrand, center and linebacker, and Bob Lee, fullback who was Idaho's leading ground gainer last year.

Coach Curfman came through with the usual comments about next year's team being better than last year's, and that a lot of Idaho's chances will depend on whether or not the reserves and inexperienced come through as expected. He did bring up an interesting point, that Idaho will not be hurt by the new substitution rule. The Vandals play in Eugene, November 7.

Down south, in UCLA, the Bruins started Spring practice a week later than Oregon. Six outstanding gridirers will be back under the guidance of Coach Red Sanders, including the Bruin's All-Coast tailback, Paul Cameron.

Besides Cameron, the Uclans will have Chuck Doud, tackle, Jack Ellena, tackle, John Peterson, center and linebacker, Jim Salsbury, guard, and Bill Stits, versatile back. These top six will all be seeing sixty-minute action under the new substitution rule. UCLA is the first big attraction on the Oregon 1953 football schedule. The Californians come all the way up to little Eugene, October 3, for their clash with the Webfoots.

Students Lose Seats

We'd like to make a little comment about the new seating arrangement that will go into effect next fall at Hayward field. The new ruling is that Oregon students will lose the seats from the 30 to the 50 yard lines on the south side of the field.

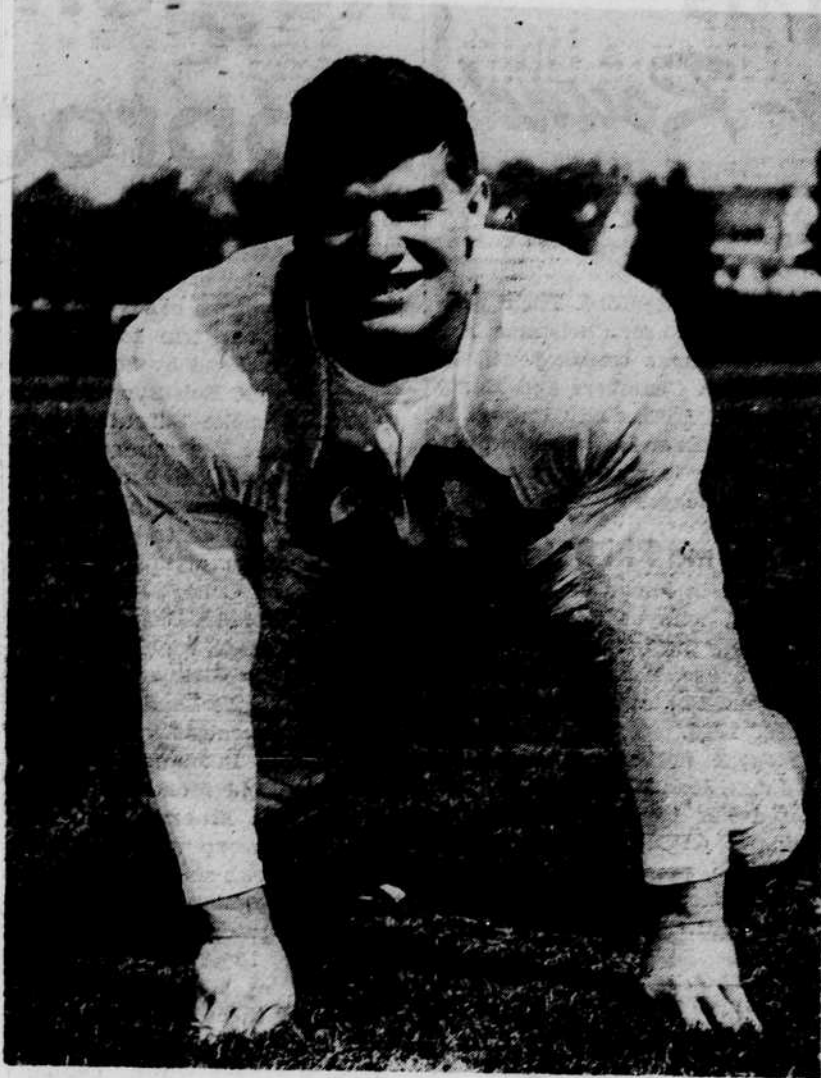
Now speaking for the students, we'd like to keep those seats. But speaking for the university as a whole, we think it's better that the seats be turned over to the preference of donors to the athletic department's grants-in-aid program. Reason is that better football teams will be the result. There's also the plan on the distant horizon that a new stadium will be built in the future. The donors can get a lot more donations to that fund, if the donors get better seats the Oregon home football games.

After comparing the 1952-53 intramural handbook to that put out in 1942-43, we find little, if any difference in the content. The handbook has made allowances for rules concerning freshmen and what house or dorm they should play for, but that's about as far as it goes.

We were a little disappointed at this at first, but now it comes to us that the mural rules should remain quite constant over the years. We've got one criticism, though. In Article I, Section 3, part c, it states that "Swimming, wrestling, golf and tennis shall be governed by..." This is all very well and good, except there was no intramural swimming or tennis this year.

However, this little slip is not important. We think Intramural Director Paul Washke and Assistant Director Gene Eyonuk have done a darn good job this year.

Leading Guard Candidate



HARRY MONDALE, stocky sophomore lineman, is one of the leading contenders for guard position on the Webfoot line of the football team. Mondale lettered at his line position in 1951 during his freshman year, but wasn't out for the squad last fall.

Spring Gridirers Sharpen Attack

(Continued from page four)
ground and aerial attack. John Woyat, another freshman, from Vancouver, B. C., was the most consistent ground gainer, running for one forty yard TD. Lloyd Powell and the two Barber twins, Merritt and Manning, also looked good in the practice.

On the defensive line, sophomore Hal Reeve and frosh George Mutchler came through with fine tackles. Frosh Larry Rose performed as linebacker.

Barney Holland's backfield took over later in the afternoon, and the veteran runners played their usual good game. Dick Mobley, Emery Barnes, and Chuck Greenley alternated at the end slots, each pulling down his share of Holland's throws.

Hodges Stands Out

Ceces Hodges came through with one of his better days at the halfback slot, ripping big holes in the line with his off tackle slants.

Decathlon Set For Next Week

Competition begins Wednesday and ends Thursday next week in the intramural decathlon track meet. Anyone who is not a track letterman is eligible for the event.

Each house will be represented by three men in the decathlon. Points toward the All-Intramural trophy will not be awarded, but individual and team trophies will be presented.

Eight events will be included in the competition. Each squad will enter the shot put, broad jump, high jump, discus, javelin, 100 yard dash, 90 yard hurdles, and three-quarter mile relay.

Action will begin at 3:00 p.m. both days.

Alpha Tau Omega Places 3 All-Stars

Alpha Tau Omega, intramural softball champion, placed three men on the intramural softball All-Star team, picked Wednesday. Hale Kane, Beta Theta Pi, and Phi Delta Theta each had two players on the squad.

A single representative was chosen from Sigma Chi, Kappa Sigma and Sigma Alpha Epsilon.

Player	Team	Pos.
Boehme	ATO	catcher
Lyon	Betas	1b
Takano	Hale Kane	2b
Ruhlman	Sigma Chi	3b
Wegner	ATO	ss
Kotoshirodo	Hale Kane	lf
Novikoff	Kappa Sig	cf
Dignan	SAE	rf
Altman	ATO	pitcher
Mickey	Betas	pitcher
Lewis	Phi Delts	utility
Farnam	Phi Delts	utility

Bob Altman, undefeated pitcher for Alpha Tau Omega, was the first choice among the hurlers. He pitched six straight wins for the mural winners and also was one of the champs' top hitters.

Mickey Other Hurler

Harlan Mickey, the other mound choice, lost two games for the Betas while hurling them to the IM semi-finals. He threw a no-hitter at the first of the season.

The infield consists of Tom Lyon, heavy hitting first baseman from Beta Theta Pi; little Bob Takano, Hale Kane's all-star second sacker; Doug Ruhlman, who paced the Sigma Chi batters to the finals round, at third base; and Kenny Wegner, shortstop from ATO.

Pitcher in Outfield

Because of the tendency of the IM teams to put all their top players in the infield, it was harder to pick three outstanding men for the outfield. Milt Kotoshirodo, Hale Kane slugger, was picked for left field; Tom Novikoff, a Kappa Sig pitcher who carried a powerful bat, was switched to the center field post; and Pat Dignan, top flight SAE player, was tabbed for right field duties.

Gene Lewis, another converted pitcher, and Keith Farnam, both Phi Delts, were chosen to fill the utility infield positions.

NEED PICNIC FOOD?

Seymour's Cafe makes a specialty of providing good food for picnics or parties and at reasonable prices. We prepare the famous "Chicken in the Rough" in individual boxes, or fried chicken in bulk. All kinds of sandwiches, potato salad, baked ham.

OUR PRIVATE DINING ROOM
We have a private room for parties or dinners, suitable for groups from 20 to 50. Ask for our menus and prices.

Drop in at Seymours whenever you are down town. We cash small checks and offer many services for your convenience. We also serve good food.

