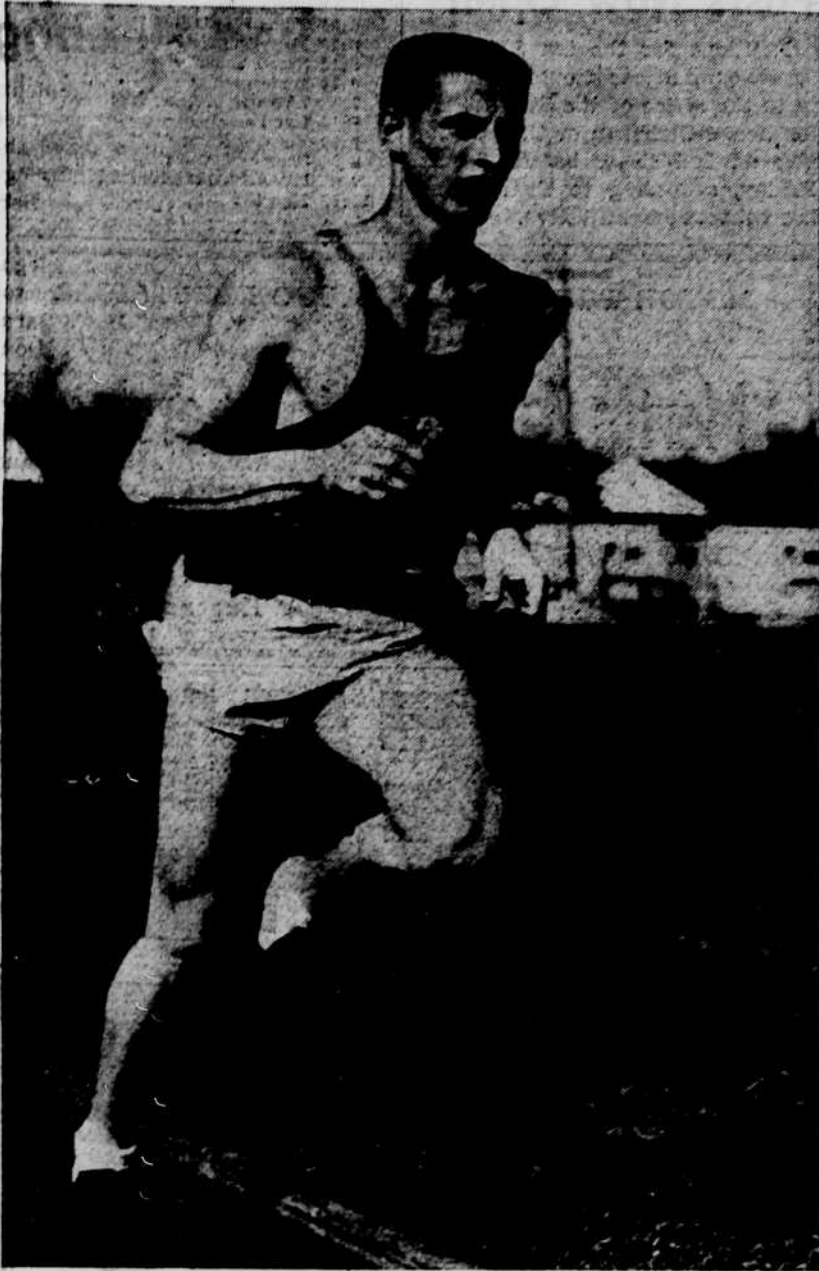


## Record Breaker



**DOUG CLEMENT**, sophomore from Vancouver, B. C., will lead the Oregon track squad into action against the University of Washington at Seattle, Saturday. Last weekend, Clement, a middle distance man, broke two meet records when the Webfoots outran Idaho.

## Oregon Cinder Team To Test Tough Huskies

By Jim White  
Emerald Sportswriter

If Oregon wins Saturday's dual track and field meet with Washington at Seattle they may be considered top contenders for a repeat championship in the dual meet race. The Ducks might provide interesting competition for the Huskies in some events but the outcome of the meet could be very dark for the Webfoot trackmen.

Judging from the amount of tears from Washington, they have a very strong team and the main reason for the sobbing is that they haven't been able to dig up a pole vaulter. Other than that, the Huskies are knee deep in good men for every event.

George Widenfelt, an exchange student from Sweden, who is more versatile than Idaho's Bruce Sweeney, can fill most gaps that may arise in Washington's cinder squad. Widenfelt can perform in the high hurdles, discus, javelin,

high jump, broad jump, 440, and pole vault but he will have competition in Darrold Skartvedt who also competes very well in most of the same events.

According to their records, the Huskies could well sweep the distance runs, javelin, discus, shot put, and high jump. They appear to be a little weak in the dashes, hurdles and pole vault but they have quantity in these events even though the quality may be missing.

The Ducks could show up quite well in the dashes and mid-distance runs with such top performers as Doug Clement, Ted Anderson, Bruce Springbett, Jerry Mock and Tom Swalm. Field competition will be stiff for Oregon except in the pole vault and possibly the broad jump.

## WIN IN TENTH

# Oregon Shades WSC

By Bob Cole

Oregon's Webfoot diamond nine scored in the bottom of the tenth inning to come from behind and edge Washington State, 7-6, in a wild three hour contest Tuesday afternoon.

Washington State tallied first in the opening inning. Stan Poppe, lead-off man, smashed a double into left field to open the game, and proceeded to score on two infield outs.

In the third inning the Cougars upped their lead to two runs as Bill Geppert pulled a tremendous

### ND BASEBALL STANDINGS

	W	L	Pct.
OREGON	3	0	1.000
Idaho	3	2	.600
Oregon State	1	1	.500
Washington	1	3	.250
Washington State	1	3	.250

### TUESDAY'S RESULTS

OREGON 7, vs Washington State 6.  
Idaho, 6, at Washington, 5

390-foot home run over the left field embankment.

The Ducks, not to be denied, bunched together three extra base hits in the fifth for three runs. After Jim Johnson had flied out to open the inning, Jim Livesay and George Shaw hit consecutive triples, and Don Siegmund followed with a double.

Two runs were in and when the Cougar's firstsacker dropped a pop fly, Siegmund raced all the way in from second base.

WSC rallied in the top of the

eighth to tie up the score on an error, a sacrifice, and a solid single to center by Rightfielder Joe Tremby. That set the stage for a wild ninth frame that saw both clubs cross the plate three times.

Geppert led off the Cougar half of the inning with a single. Then, after pinch-hitter Doug Bohlke had popped up and Lee Frank was walked, Webfoot Coach Don Kirsch replaced Norm Forbes on the mound with Lefthander Trent Huls.

Poppe, the first hitter to face Huls, lifted a high fly to left field which Ron Phillips lost in the sun. The ball sailed over his head, and Poppe scored with Geppert and Frank ahead of him. Huls then put out the fire but the damage was done.

Oregon's Livesay opened the Webfoot ninth with a walk, and advanced to second on an infield out. Siegmund drove him across with a single, his third hit of the day.

Earl Averill was hit by the pitcher, and both runners advanced a base on Phillip's ground out. With two men out Neil Marlett went to bat for Bernie Averill, and

sent an easy roller to the second baseman. The throw to first was wide, pulling Bob Burrows off the sack. Burrows turned to tag Marlett out and appeared to have him cold, but the umpire called the runner safe. Siegmund and Jim Archer, running for Earl Averill both tallied on the play to send the contest into extra innings.

With Bruce Boldt on the mound for the Cougars, Oregon loaded the bases in the bottom of the inning with one man out, and Siegmund cracked a sharp single into right field to score Jim Johnson with the winning tally. Blodgett was credited with the Duck win, and Boldt took the loss.

Washington State	AB	H	R	OREGON	AB	H	R
Poppe, lf 2b	5	2	2	Livesay, cf	5	4	2
Kranc, 2b, ss	5	0	1	Shaw, ss	3	1	1
Sparks, cf	4	1	0	S'gm'd, 1b	6	4	2
Tremby, rf	4	3	0	E. Averill, c	3	0	0
Burrows, 1b	5	2	0	Phillips, lf	4	0	0
Campbell, 3b	4	1	0	B. Averill, rf	2	0	0
Geppert, c	4	2	2	Williams, 3b	5	1	0
Williams, ss	3	0	0	Forbes, p	3	0	0
Frank, p	3	0	1	Johnson, 2b	5	2	1
Bohlke, lf	2	0	0	Huls, p	0	0	0
Rehder, 1b	0	0	0	Blodgett, p	0	0	0
Boldt, p	0	0	0	Marlett, c	1	0	0
Beckel*	0	0	0	Wagner, 1b	0	0	0
				Archer	0	0	0
				Murray***	0	0	0
Totals	30	11	6	Totals	37	12	7

Washington State	100	100	013	0-6	11-4
Oregon	000	030	003	1-7	12-2

## DU's Edge Betas In Mural Contest

Delta Upsilon edged out Beta Theta Pi, 2-1, in the lone intramural game yesterday. It was a make-up of the contest which was originally scheduled for last Friday, but which was postponed because of the Hayward relays.

DU's 000 20-2 6  
Beta's 000 01-1 3  
Johnson and McConnell; Mickey and Stout.

## SPORTS FARE

Wednesday, April 22

### SOFTBALL

3:50 North Field:  
Sitzer Hall vs Nestor Hall  
3:50 South Field:  
French Hall vs Merrick Hall  
3:50 Upper Field:  
Phi Gamma Delta vs Tau Kappa Epsilon  
4:55 North Field:  
Lambda Chi Alpha vs Kappa Sigma  
4:55 South Field:  
Susan Campbell vs Sigma Hall  
4:55 Upper Field:  
Delta Tau Delta vs Phi Delta Theta  
TENNIS  
French Hall vs Pi Kappa Phi  
GOLF  
Delta Upsilon vs Phi Kappa Sigma

## INTRA-MURAL STANDINGS

### LEAGUE 1

	W	L	Pct.
Delta Upsilon	4	0	1.000
Sigma Nu	3	0	1.000
Beta Theta Phi	3	1	.775
Phi Sigma Kappa	0	3	.000
Phi Kappa Psi	0	3	.000
Sigma Alpha Mu	0	3	.000

### LEAGUE 2

	W	L	Pct.
Hale Kane	3	0	1.000
Campbell Club*	2	0	1.000
Sigma Hall*	1	1	.500
Susan Campbell	1	1	.500
Philadelphia House	1	2	.333
Alpha Hall	0	3	.000

### LEAGUE 3

	W	L	Pct.
French Hall	3	0	1.000
Merrick Hall	2	1	.667
Sitzer Hall	1	2	.333
Nestor Hall	1	2	.333
Sherry Ross	1	2	.333
Legal Eagles	1	2	.333

### LEAGUE 4

	W	L	Pct.
Sigma Chi*	2	0	1.000
Kappa Sigma*	1	1	.500
Tau Kappa Epsilon	1	1	.500
Phi Gamma Delta	1	1	.500
Lambda Chi Alpha	0	3	.000

### LEAGUE 5

	W	L	Pct.
Alpha Tau Omega	2	0	1.000
Phi Delta Theta	2	0	1.000
Delta Tau Delta	1	1	.500
Theta Chi	0	2	.000
Pi Kappa Phi	0	2	.000

### LEAGUE 6

	W	L	Pct.
Sigma Alpha Epsilon	2	0	1.000
Chi Psi	1	0	1.000
Sigma Phi Epsilon	1	1	.500
Pi Kappa Alpha	0	1	.000
Phi Kappa Sigma	0	2	.000

**100% Nylon**

SHORT SLEEVE SHIRTS  
**2.99**

HAWAIIAN PRINT SHIRTS  
Seersucker or Rayon  
**2.98**

Blue 10 oz. Denim  
SLACKS  
**3.77**

**ALEXANDER'S**  
DEPARTMENT STORE  
Phone 7-2271  
538 Main

*Eugene's Most Modern Sandwich Shop*

**RUSH INN**

ON THE CAMPUS - 854 E. 13th

**Take it Easy**

Relax as you SEE  
As you SAVE ...  
by GREYHOUND

Here's travel that's easy on you and your purse ... comfortable, carefree travel to any place in America ... at low fares that mean EXTRA cash for EXTRA fun. On trips home, or anywhere, choose the best way, choose Greyhound!

**SEE HOW YOU SAVE!**

Corvallis	\$ 1.05	Portland	\$ 2.90	Seattle	\$ 6.20
Klamath Falls	3.95	Los Angeles	14.25	Coos Bay	2.85
Grants Pass	3.50	San Francisco	9.95	Salem	1.80

Return Trip 20% LESS ... on Round-Trip Tickets. Plus Fed. Tax

987 Pearl Street, Eugene  
Telephone 4-6265

**Take a Greyhound**