

# Oregon Daily EMERALD

The Oregon Daily Emerald published Monday through Friday during the college year except Jan. 5; Feb. 23; Mar. 2, 3, 5, 9, 10 and 11; Mar. 13 through 30; June 1, 2 and 3 by the Student Publications Board of the University of Oregon. Entered as second class matter at the post office, Eugene, Oregon. Subscription rates: \$5 per school year; \$2 per term. Opinions expressed on the editorial page are those of the writer and do not pretend to represent the opinions of the ASUO or of the University. Editorials are written by the editor and the members of the editorial staff.

JIM HAVCOX, Editor

RON BROWN, Business Manager

## Student 'X' Complains

Now and again, when we come to grips with something which affects students in a rather special way, we try to imagine ourselves talking to an "average" student. We let him (or her) take a seat in the office and start asking questions, always, of course, about this special problem.

Our most recent imaginary interview, for your information, was yesterday when student "X" walked in, slammed the door, crushed out his cigarette on the desk and bellowed:

"What, in the name of God, have you done to this paper? I remember last year when you had eight pages five times a week. And we used to get it in the morning, too. Now . . . it's a mess. And you don't get it out until half of us have gone back to bed for the night.

"Well, it's really not as bad as all that," we said.

"No, it's worse," he sneered. "What do you guys do over there? Feed dollar bills to the squirrels?" All of a sudden no money. Well, out with it. Who went to Mexico?"

"Look," we said, "nobody's gone to Mexico . . . yet. And nobody's to blame, either. We've been having financial difficulties, but it's no exception."

"Oh," he said, unconvinced. "Well, how long is this going to last anyway?"

"Near as we can tell we'll continue on as is to the end of this term," we replied. "It depends a lot on advertising."

"Clear as mud," he retort-

ed. "I'd still like to know just what happened."

"Well," we said, "it's this way. We have to make so much off advertising each day to keep within our budget. In a rough sort of way, if it costs \$100 to print one four-pager, about \$50 of it comes from student fees and the other \$50 from advertising. But we haven't been able to make that much for some time.

"Last term, for example, we went over \$600 in the hole. We made some of that up by cutting off issues near the last of the term — all but about \$250 of it. In the first two weeks of spring we lost another \$200. We just couldn't go on that way, losing money day after day.

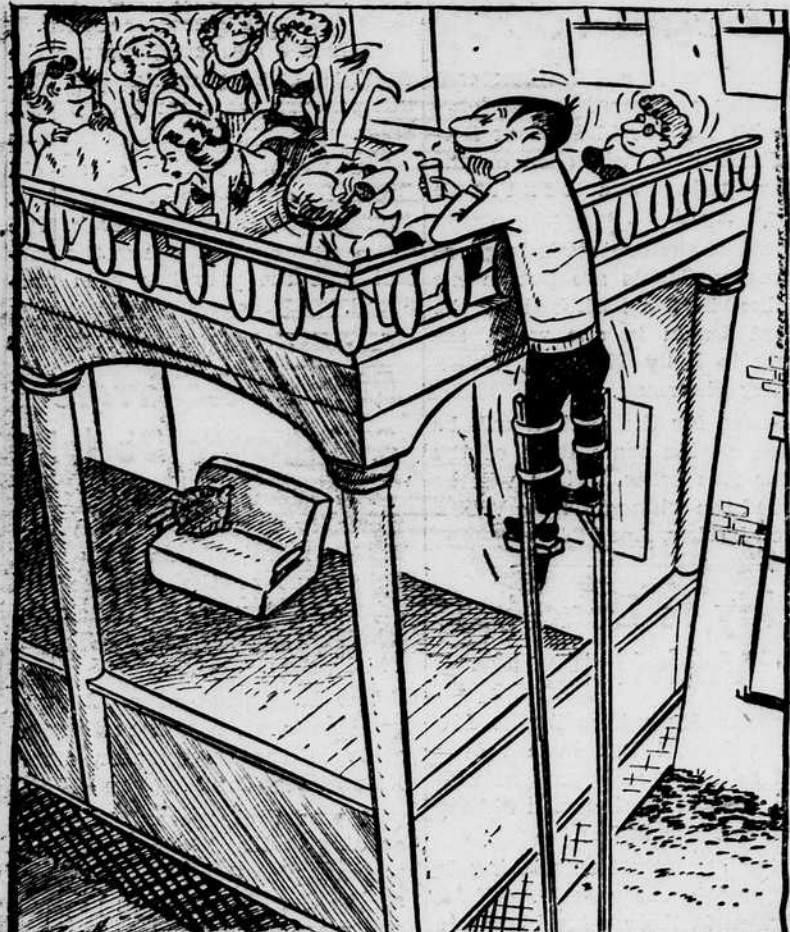
"But why the noon paper?" he mumbled. "Why didn't you put it out in the morning like you did before?"

"Simple," we said. "By putting it out in the morning, we think we'll be able to save about \$20 a day in printing costs. The situation was that bad . . . we had to make every saving possible. You'll notice we also cut off deliveries and cut our remaining 1952-53 budget to pieces. We had to do that."

"So we're stuck with it, I suppose," he said. "Well, I still don't like it."

"We don't either," we agreed, "but we'll live with it . . . and so will you. You've still got a paper, and that's the important thing. And as soon as we can see our way clear, we'll try to get back to the old system."

### Spring! When a...



"Lemonade! Why Worthal, how nice of you to think about ME on this hot ol' afternoon."

## ● Campus Briefs

● All members and pledges of Alpha Lambda Delta are to meet at 4 p.m. today in the Student Union, according to Sylvia Wingard, president.

● United Independent Students will meet today at 4 p.m. in the SU. Two representatives from each living organization should attend according to Don Collin, president. All off-campus students are also invited to attend the open meeting.

● A program entitled "The Abundant Life" will be presented by Roger Aiken, representative of the Campus Crusade for Christ, tonight at 6:50 at Phi Delta Theta. The meeting, open to all students, will feature a quartet, trumpet player and a talk by Aiken.

● A solicitors trainee meeting for the World Student Service Fund will be held in Friendly 105 at 4 p.m. today. Gladys Lawther, regional WSSF secretary, will be the guest speaker.

● A program of recordings, "Folkways and Music," will be presented in the Peter Benson Howard music listening room of the Student Union tonight at 7:30 p.m. by David Hatch, instructor in art.

● Junior Weekend promotion and float parade chairmen will meet today at 4 p.m. The promotion committee will meet at Phi Beta Phi, float parade group at the Student Union.

● Petitions for the entertainment committee for the Mortar Board Ball May 25 must be turned in to Jean Sandine at Carson hall by 5 p.m. Friday.

## Student Concert To Be Given at 8

Soprano Dorothy Anderson and bass-baritone Douglas Stobie will present a concert tonight at 8 o'clock in the music school auditorium.

Selections from Bach, Mozart, Schubert and Puccini will be included in the program, plus a duet, "The Telephone." Accompanists for the performance are Ruth Ownley and Joyce Sinner.

## Classifieds

Typing, 11c page, appointment; 8 a.m., 1 and 4:30 p.m., at Erb Memorial, main floor lounge. Bertha Vimont, phone 4-4010, 5:30 p.m.

WANTED — University girl to work part time as costume jewelry fashion show director. Must be able to speak before small groups of ladies. \$50 per week. Phone 4-8554.

## Spring formals..

- choose a dress
- with a lilting look
- romantic as spring
- from THE BONNET NOOK'S newest selection!

And...

If YOU'RE from the University, we'll have a GIFT to go with your formal! Come in today!

**the Bonnet Nook**

921 Willamette

## Sororities Set Sunday Rush

Sunday is "Drop-In Day" for all women interested in spring term rushing. Any women interested in visiting the sororities houses on the campus are invited to do so between the hours of 3 and 5 p.m., according to Sally Thurston, Panhellenic president.

The event, sponsored by Panhellenic, will provide an opportunity for women to become acquainted with the sororities, Miss Thurston said.

Eleven of the sixteen sororities will participate, the others already having filled quotas. Houses taking part are Alpha Chi Omega, Alpha Delta Pi, Alpha Gamma Delta, Alpha Omicron Pi, Alpha Xi Delta, Chi Omega, Delta Delta Delta, Delta Zeta, Gamma Phi Beta, Sigma Kappa and Zeta Tau Alpha.

Women are urged to go to all eleven houses in the two hour period, and must visit at least three, staying as long as desired in each place. Campus clothes will be in order, Miss Thurston added.

Rontgen rays are produced when cathode rays strike on the surface of a solid, as the wall of the vacuum tube.

## GAS PEDDLER

STUDENTS! EARN EXTRA MONEY! Students who want to earn a commission selling the PAMOSA SYSTEM on the campus, contact us.

## Campus Calendar

Noon	Em Sub Com	111 SU
	Phi Beta Cab	112 SU
	Phi Alpha Delta	113 SU
12:25	YMCA Town	
	Hall	Dad's Lounge SU
1:00	WSSF	110 SU
1:30	Stu Bus Conf Info	
	Desk	Lobby 2nd Fl SU
	Stu Bus Sched	
	Poster	Bd SU
3:00	AF-ROTC	110 SU
4:00	U I Meet	111 SU
	Alpha Lambda Delta	
		Dad's Lounge SU
	Jr. Wknd Float	
	Par	112 SU
	WSSF Sol	105 Fr
6:15	YMCA Cab	319 SU
6:30	Druids	111 SU
	IFC	214 SU
	ASUO Sen	334 SU
7:30	Chess Cl	113 SU
7:30	YMCA Inq Grp	315 SU
	Internat'l Rel Cl	
		Dad's Lounge SU

**Dr. Leland A. Huff**  
Optometrist  
13 W. 8th Ave Ph. 5-3725

## MOTOR-VU THEATRE

FRI.-SAT. APRIL 17-18

Ray Bolger  
"WHERE'S CHARLEY?"  
and  
"WOMAN OF THE NORTH COUNTRY"

SUN.-MON. April 19-20

"CLOSE TO MY HEART"  
Ray Gene  
Milland Tierney  
and  
"THE TURNING POINT"

1 mile E. Springfield  
Admission 65c Phone 7-2000

# ... at The Broadway

IT'S

# Catalina

LOOK FOR THE FLYING FISH

FINEST IN

# SWIMWEAR

... if it's packaged in pink, it came from

**The Broadway** 25 Years at 30 East Broadway