

# Duck Tracks

By John Whitty

Emerald Sportswriter

Tonight marks the first game in the four game series which the Oregon-Webfoots annually play against the Beavers of Oregon State, and to all appearances the contest should be a good one. Oregon currently is holding down second place in the Northern Division, while the Beavers are residing in the fourth slot. However, only one game separates the two squads, so a double win by OSC in the weekend's games would reverse the positions of the two perennial opponents.

In the season opener last December, the Staters won a non-league decision from the Ducks at Portland by a 72-68 score in an overtime following a one-point basket by Duck forward Ed Halberg. Due to an inadequate timing device, it was impossible to determine whether or not Halberg's bucket was made before time was up, so the official scorer gave him one point for the shot. This tied the game at 63-63, and in the overtime period the Beavers forged ahead and won.

Since that time, however, both teams have improved considerably, and only time will tell which has come the farthest. Slats Gill, now virtually a legend at the Corvallis school, has years of basketball experience behind him, and he can always be expected to field an alert, well-rounded quintet.

## Beavers Deep

This year's Beavers have an exceptionally strong reserve group, and often Gill has trouble deciding which of his combinations will fare the best. The tentative starting lineup for the game tonight has 6-foot, 6-inch Tex Whiteman in one of the forward slots and Ted Romanoff, a 6-foot, 8-incher, in the other. The guards will probably be Bill Toole, a sophomore speedster from Klamath Falls, and Johnny Jarboe, another sophomore from Franklin high in Portland.

At center, Gill will have 6-foot, 5-inch Tony Vlastelica, the sensational sophomore transfer from Grays Harbor JC in Washington. Big Tony dropped in 28 points in the Beaver victory over Idaho last weekend, and is always considered a scoring threat. He specializes in hook shots with either hand, and the word from Corvallis is that he has finally found himself in Northern Division competition.

Behind these five, the OSC mentor has one of the strongest second teams on the Pacific Coast. Among them are Reggie Halligan and Ron Robins, both of whom have seen considerable action for the Staters this season. All-ND guard Danny Johnston is another competitor who can always be counted on to give a creditable performance, although he has not yet approached his peak of last year.

## Same Starters

Oregon's head coach, Bill Borchert, will probably stick with the lineup he has been using for the last few games. Ed Halberg and Keith Farnam will probably open the game at the forward spots, with 6-foot, 7-inch Chet Noe holding down the center position. At guard, Ken Wegner and Barney Holland can be expected to start, but junior Bob Hawes, the sharpshooter of the Webfoot squad, will undoubtedly see plenty of action.

It was quite a surprise to many Webfoot fans last Friday night to see that Big Hank Bonnemman was starting the game at center, and that Chet Noe had been moved over to forward, but a few followers of Oregon basketball fortunes have been looking for such an occurrence all season. Hank has been showing steady improvement ever since the start of the year, and he is turning out to be quite an asset to the team.

We have watched Hank ever since his freshman year, and before this season, it always seemed to us as if the big boy was out of place on a basketball court, although we admired his hustle and efforts to do the right thing. But now, we are actually glad to see him take the floor. Hank's movements are much more coordinated, and he seems to have found himself at last.

## Fast or Slow?

To get back to this evening's contest, it will be interesting to see what Slats Gill will do to stop Oregon's smooth-working fast break. Will Oregon State run with the Webfoots, or will they try to slow down the pace of the game? Most of Gill's teams in years past have relied on a slow deliberate system of ball control, but when he has had the right material, Slats has not hesitated to field a fast breaking outfit.

With such speedsters and ball handlers as Toole and Robins on the roster, OSC could probably run with the Webfoots, and perhaps even run away from them, but whether they will try to or not is still a question. Usually, when a team tries to run with one of Bill Borchert's quintets, they find themselves trailing by a considerable margin at the end of the game, but with the material at his command, it seems as though Slats might at least experiment with the idea of trying to run away from the hard-breaking Ducks. Again, only time will tell.

# Stitzer Squad Bombs Merrick

Dick Barnard, with fourteen points, and Gary Newton, with twelve markers, paced Merrick as they registered a 33-29 victory over a hard fighting squad from Stitzer.

The lead changed hands nine times with the score by quarters running 7-7, 13-11, and 25-21 in favor of Merrick.

**Merrick (33)** (29) Stitzer  
 Newton, 12 ..... F ..... 9, Todd  
 Kramer, 0 ..... F ..... 8, Brandenfels  
 Barnard, 14 ..... C ..... 0, Bach  
 Heaberg, 3 ..... G ..... 4, Kam  
 Hammerstad, 4 ..... G ..... 8, Wald

## Sigma Stiffles Suzies

Sigma hall paced by Sam Duncan pulled away in the second quarter to defeat Susan Campbell 42 to 22. Duncan accounted for eight of his 14 points on fast breaking plays. Sigma gained 30 of their points by this style of offense.

The quarter scores were 6-4, 19-9, and 34-20 in favor of Sigma Hall.

The point summary:

**Sigma (42)** (22) Campbell  
 Kincaid, 0 ..... F ..... 0, Troxel  
 Dubbs, 8 ..... F ..... 6, Bogby  
 Wisniewski, 5 ..... C ..... 7, Froman  
 One, 7 ..... G ..... 5, Muira  
 Hall, 8 ..... G ..... 4, Parker  
 Sigma substitutes: Duncan 14.

## Sig Eps Bop Sammies

Dick Graham's push shots combined with Kee Briggs' tip-ins to

# Maritime Crew Tapers Drills For State Meet

Following stiff workouts this week, the Oregon swimming team will ease off today in preparation for the state AAU meet Saturday. The tournament, which will be held in Portland, will consist of entries from the various colleges, universities and clubs throughout the state.

Although Oregon State dropped its swimming team from the Northern Division conference one week ago, several Beaver swimmers are expected to compete in the meet.

Last year, Oregon won the men's division and coach Borchert is confident the team will repeat this year. "The team should pick up most of its points in the distance events," Borchert stated, since the swimmers in these events are in pretty good shape." Gordon Edwards, who showed mid-season form by swimming the 1500 meter in 20:01 Wednesday is tabbed to take the individual honors at the meet. Last year, Edwards was named to the Northern Division all star team after breaking the time in the 440 freestyle.

## Webfoots Boast Edge

(Continued from page four)  
 Gill will bring 12 players down for the opener. They are forwards Sugrue, Romanoff, Whiteman, Al Patsel and Reggie Halligan; centers Vlastelica and Bob Edwards; and guards Toole, Jarboe, Danny Johnston, Bud Shirtcliff, Ron Robins.

Reserve Forward Alex Byler of the Ducks voluntarily quit the squad Wednesday.

Gill will be honored for his 25th years of coaching Saturday at the coliseum.

**OREGON STATE** (No. 14) Romanoff (6-8) ..... F ..... (6-2) Farnam 21  
 20 Whiteman (6-6) ..... F ..... (6-5) Halberg 16  
 33 Vlastelica (6-5) ..... C ..... (6-7) Noe 26  
 34 Jarboe (6-2) ..... G ..... (5-11) Holland 25  
 17 Toole (5-11) ..... G ..... (5-10) Wegner 8  
 Oregon State roster—11 Sugrue, f; 14 Romanoff, f; 15 Robins, g; 17 Toole, g; 18 Halligan, f; 20 Whiteman, f; 21 Edwards, c; 22 Shirtcliff, g; 28 Johnston, g; 33 Vlastelica, c; 34 Jarboe, g; 37 Patsel, f.  
**OREGON** (No. 6) Stout, f; 12 Page, g; 14 Green, g; 15 Johnson, f; 16 Halberg, f; 17 Covey, g; 19 Bonnemman, c; 21 Farnam, f; 25 Holland, g; 26 Noe, c.

lead Sig Ep B to a 37-11 triumph over Sammy B Thursday. Graham and Briggs each accounted for ten points.

Stan Geffen, scoring a half dozen, led the losing five. Score by quarters went 3-2, 13-8, 21-11.

**Sig Eps (37)** (11) Sammies  
 Huls, 3 ..... F ..... 1, Davis  
 Bowden, 4 ..... F ..... 6, Geffen  
 Briggs, 10 ..... C ..... 4, Sherman  
 Graham, 10 ..... G ..... 0, Friedman  
 Eckstrom, 6 ..... G ..... 0, Nudelman  
 Scoring subs: Sig Ep—Allen, 4.

## Nestor Tips Sherry Ross

Thursday's closest contest saw Nestor edge Sherry Ross 17-16. The victors pushed to an early lead, but less than half-way into the second quarter Sherry caught and passed them.

As each quarter ended Nestor was on top. The scores read 5-0, 9-8, 14-11, and finally 17-16. Sher-

ry's Don Imbrie led the scorers with seven tallies, with his teammate Jack Sokolofsky and Nestor's Jim Massey following with four each.

**Nestor (17)** (16) Sherry Ross  
 Shultz, 0 ..... F ..... 2, Shaffer  
 Bowers, 2 ..... F ..... 0, Smith  
 Davis, 2 ..... C ..... 0, Lawson  
 Helliwell, 2 ..... G ..... 7, Imbrie  
 Sorensen, 2 ..... G ..... 0, Dalrymple  
 Scoring subs: Nestor—Massey, 4; McFerren, 3, Overhouser, 2.  
 Sherry Ross — Sokolofsky, 4; Grant, 3.

## Forfeits Mar Tilts

Philadelphia House won their game by forfeit when the frosh Counselors failed to appear by game time.

Chi Psi B settled for a practice tiff with a vagabond squad as Gamma B forfeited the scheduled contest.

# INTRA-MURAL STANDINGS

LEAGUE 1-A			LEAGUE 1-B						
W	L	Pct.	W	L	Pct.				
Sigma Alpha Epsilon	2	0	1.000	Theta Chi	2	0	1.000		
Kappa Sigma	2	0	1.000	Beta Theta Pi	1	1	.500		
Beta Theta Pi	1	1	.500	Phi Delta Theta	1	1	.500		
Delta Tau Delta	1	1	.500	Phi Kappa Psi	1	1	.500		
Pi Kappa Phi	0	2	.000	Lambda Chi Alpha	0	2	.000		
Tau Kappa Epsilon	0	2	.000	LEAGUE 2-B					
LEAGUE 2-A			Sigma Nu	2	0	1.000			
Alpha Tau Omega	2	0	1.000	Alpha Tau Omega	1	1	.500		
Pi Kappa Alpha	2	0	1.000	Sigma Alpha Epsilon	1	1	.500		
Chi Psi	1	1	.500	Sigma Chi	1	1	.500		
Lambda Chi Alpha	0	2	.000	Kappa Sigma	0	2	.000		
Sigma Phi Epsilon	0	2	.000	LEAGUE 3-B					
LEAGUE 3-A			Phi Gamma Delta	2	0	1.000			
Phi Gamma Delta	2	0	1.000	Sigma Phi Epsilon	1	0	1.000		
Phi Kappa Psi	1	1	.500	Delta Upsilon	1	1	.500		
Sigma Chi	1	1	.500	Sigma Alpha Mu	0	1	.000		
Phi Kappa Sigma	1	1	.500	Delta Tau Delta	0	2	.000		
Pi Sigma Kappa	0	2	.000	LEAGUE 4-B					
LEAGUE 4-A			Hale Kane	2	0	1.000			
Sigma Nu	2	0	1.000	Sigma Hall	1	0	1.000		
Phi Delta Theta	2	0	1.000	Chi Psi	0	1	.000		
Delta Upsilon	1	1	.500	Susan Campbell	0	1	.000		
Theta Chi	0	2	.000	Gamma Hall	0	1	.000		
Sigma Alpha Mu	0	2	.000	LEAGUE 5-B					
LEAGUE 5-A			French Hall	2	0	1.000			
Hale Kane	2	0	1.000	Stitzer Hall	1	0	1.000		
Susan Campbell	2	0	1.000	Merrick Hall	0	1	.000		
Alpha Hall	1	1	.500	Nestor Hall	0	1	.000		
Barrister Inn	0	2	.000	Sherry Ross	0	1	.000		
Gamma Hall	0	2	.000	LEAGUE 6-B					
LEAGUE 6-A			Phi Kappa Sigma	1	0	1.000			
Merrick Hall	2	0	1.000	Pi Kappa Alpha	1	0	1.000		
French Hall	2	0	1.000	Campbell Club	1	1	.500		
Nestor Hall	1	1	.500	Philadelphia House	0	1	.000		
Sherry Ross	0	2	.000	Counselors	0	1	.000		
Stitzer Hall	0	2	.000	LEAGUE 7-A					
LEAGUE 7-A			Campbell Club	2	0	1.000			
Campbell Club	2	0	1.000	Yeomen	1	1	.500		
Yeomen	1	1	.500	Philadelphia House	1	1	.500		
Philadelphia House	1	1	.500	Counselors	1	1	.500		
Counselors	1	1	.500	Legal Eagles	0	2	.000		
Legal Eagles	0	2	.000						

Friday, January 30

3:50 Court 40 Phi Kappa Sigma B vs. Pi Kappa Alpha B  
 3:50 Court 43 Delta Tau Delta A vs. Sigma Alpha Epsilon A  
 4:35 Court 40 Kappa Sigma A vs. Beta Theta Pi A  
 4:35 Court 43 Pi Kappa Phi A vs. Tau Kappa Epsilon A  
 5:15 Court 40 Hale Kane A vs. Alpha Hall A  
 5:15 Court 43 Barrister Inn A vs. Susan Campbell A

## DIAMOND - WATCHES SILVERWARE

HERBERT OLSON JEWELER

175 E. Broadway Eugene, Oregon

Expert Watch and Jewelry Repairing

Phone 4-5353

## 11 a.m. "Ho, Everyone That Thirsteth"

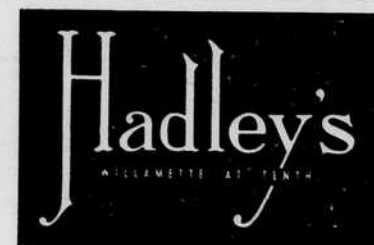
KASH Broadcast  
 February Goal for Sunday School is 1,300  
 Come at 9:45 a.m.  
 7:30 p.m.

## "WHAT IS YOUR NAME?"

University Fellowship Group at 6:30 p.m.

## FIRST BAPTIST CHURCH

Bdwy at High Dr. Vance H. Webster, Pastor



Watch!

## Next Thursday

for one of the New Year's Outstanding

## Wash Dress Event

Downstairs at HADLEY'S McDonald Theater Corner