

CLASSIFIED

Place your ad at either the Student Union main desk or the Emerald "Shack"; or call 5-1511, ext. 219 between 2 and 4 p.m.
Rates: First insertion 4c per word; subsequent insertions 2c per word.

● LOST

LOST AT CAMPUS LUNCHEON, gold bird pin with green stone. Please return to Marvin D. Eby, Sherry Ross Hall. 124

● FOR SALE

CONV. 1948 CHEV. All extras. Phone 4-1821. 123

FOR SALE: 3 formals, size 14; 1 black formal skirt, size 14. Ph. 5-0963. 123

PONTIAC convert. '41, good condition and r. & h. Ph. 4-6560, 976 E. 20th. 126

FOR SALE: 3 formals, size 14; 1 black formal skirt, size 14. Ph. 5-0963. 122

FOR SALE: LEICA BARGAIN, model IIIc (F.2 Summar) 6 months old—like new—\$116 off, only \$250. Cesarz, 5-9631. mwf

YWCA Sponsors "Ladies Night Out"

Plans have been completed for the YWCA sponsored "Ladies Night Out" to be held Friday beginning at 5:30 p.m. on Howe field. General Chairman Helen Wright has announced. In case of rain, it will be held indoors.

It is to be a combined fun night for all women's living organizations, Miss Wright said, and will be informal. Women will bring sack lunches and coffee, Coke and ice cream will be served. Entertainment will include softball, bridge, etc.

A charge of 15 cents will be made for all attending, money to go towards helping the YWCA budget for the year.

Monthly rental of trailer space in America's 7,500 trailer parks averages \$15 to \$30. The number of parks in which these mobile homes are sheltered is increasing at the rate of 1,000 a year.

One of the fastest-traveling stars known is a faint one designated by its catalog number as "Washington 5583." Its speed, as measured from the Sun, is about 370 miles per second.

Eliminations Set For Sweethearts

Eliminations for armed forces day sweetheart will be held at 7 p.m. today in the Student Union. Campus clothes will be in order. Joyce Jones, selection chairman, stated.

Eight candidates for the sweetheart had been turned in to Miss Jones by Monday night. They are Lou Ann Chase, Pi Beta Phi; Joan Skordahl, Chi Omega; Colleen Lee, Alpha Delta Pi; Bernice Gartrell, Sigma Kappa; Mary Preuss, Kappa Kappa Gamma; Joanne Lewis, Delta Zeta; Arlene Kennedy, Delta Delta Delta; and Roberta Matson, Alpha Gamma Delta.

Other names had not been turned in by 10 p.m. Tuesday.

Final selection of the sweetheart by a board of ROTC officers will be held Thursday night in the SU at 6:30 p.m.

The 15 tribes of Indians who inhabited what is now the Mexican state of Oaxaca believed at the time of the Spanish conquest that they were descended from trees. Many trees, particularly large or old ones, were held in veneration.

Honors Program Participation At Low Ebb Says Leeper

By Walt Wakefield

Participation in the honors program is at a low ebb, according to Robert W. Leeper, professor of psychology and chairman of the Honors council.

Object of the program is to provide superior students with an opportunity to carry on independent studies beyond the general requirements for graduation. Successful completion of the program earns for the student a bachelor's degree with honors.

Faculty Supervision

Courses designated "research," "reading and conference" and "thesis" are utilized for this purpose. Each student receives necessary supervision from a faculty member in his or her department.

To qualify for honors work the student must complete 93 term hours of study, including all lower division requirements, with a grade point average of at least 2.75 or obtain the approval of the Honors council on recommendation of a department head.

Begins Junior Year

The work generally begins in the first term of the junior year. The student must maintain a grade point of 3.0 or better while working for honors.

According to the catalog, the interested student must first register with the chairman of the Honors council. The tendency, however, has been to handle everything within the individual's school or department, Leeper said.

Only Six in 1951

In 1951 only six students were graduated with honors. This represented only .5 per cent of the 1197 baccalaureate degrees received, a 20-year low. A high point was reached in 1945 when 17 of the 317 degrees granted were with honors.

Leeper suggested that the lack of participation might be due in part to the increasing number of graduate students at the University. Figures from the registrar's office show an increase from 268 to 772 graduate students during the five-year period ending in 1951.

Cuts Down Time

Individual instruction of graduates cuts down on the time faculty members can spend supervising honor students, Leeper said. For this reason, students might not be encouraged to participate in the program.

Some departments feel that there is no place for the honors program at all, Leeper said.

Students Hesitate

Another possibility, he pointed out, is that students just hesitate to take on the added work. Also, there may not be sufficient awareness of the program.

For students who are willing to exert themselves, two types of honors are available. To earn general honors, the student must complete work in at least two departments. For departmental honors the work need not extend beyond a single department or school.

Honors work generally involves writing an essay or thesis. In addition, the honors student must pass an examination conducted by the school or department supervising his program. The words "with honors" then appear on his degree.

CAMPUS CALENDAR

| All Hours Daylight Time | |
|-------------------------|--------------|
| 11:45 Univ Theatre | 110 SU |
| Noon French Table | 111 SU |
| 1:30 Music Comm | 313 SU |
| 3:00 AF ROTC Intv | 112 SU |
| 4:00 Hoffman Asbly | Ballrm SU |
| Frosh Picnic | 113 SU |
| 6:15 Mu Phi Epsilon | 214 SU |
| Social Sci | 114 SU |
| 6:30 Kwama | 112 SU |
| 7:00 Inter-Varsity CF | 333 SU |
| Christian Sci | 113 SU |
| Newman Disc | 112 Friendly |
| Amed Force Queen | 315 SU |
| 7:30 Social Dance | 110 SU |
| NAACP | 1st Fr Gerl |
| 8:00 Kefauver Asbly | Ballrm SU |

Berlin, having regained its standing as a cosmopolitan city, attracted 865,000 visitors in the first eight months of last year, compared with 530,000 for the corresponding period in the previous year.

Fine Collection At Art Museum

By Helen Jones

One of the finest Oriental art collections on the Coast is kept on the campus, yet barely half the students have seen it.

The collection is housed in the Museum of Oriental Art, the "windowless building" facing the quad. Of the 50 per cent of the students who have been inside—and this is a generous estimate—few have done so more than once.

Original Donation in 1921

Mrs. Gertrude Mass Warner donated the priceless collection to the University in memory of her husband, Maj. Murray Warner, and to stimulate interest in the Far East. After her original bequest in 1921, Mrs. Warner made many trips to the Orient to augment the collection.

Included in the exhibits are Oriental handicraft, jade, screens, clothing and furniture. Many of the displays contain true objects d'art, from imperial palaces.

Old Chinese Paintings

There are Chinese paintings on silk dating back to 456 A. D. There is a roomful of Russian ikons (alterpieces). There are contemporary sketches by Westerners, showing their impressions of the Far East.

Visitors from all over the state come to the campus especially to see the Warner collection. Oregon students view it only on such occasions as Homecoming and Mother's Weekend when they usher visiting parents around the campus.

Windowless Building

The windowless building was designed to house the Murray collection. It was constructed in 1930 as a memorial to Prince Lucien Campbell, former president of the University.

Oregon citizens paid for the \$200,000 structure with a series of fund-raising campaigns during the 1920's. Ten thousand dollars was collected in a postal card drive in 1925. The same year a club was formed to solicit funds. Delta Gamma sorority donated \$1000 in 1929.

Sunlight Protection

Windows were omitted from the building to protect the exhibits from damaging effects of sunlight.

Lighting in the structure does not depend entirely on electricity, however. In the center there is an open court, the tile floor of which was designed by art school students. A covered corridor surrounds the court, and a pool and fountain are in the center. The fountain plays water into a basin, which cascades into the larger pool.

No Director

Mrs. Warner served as director of the museum until her death in 1921. No new director has yet been named. Mrs. Mabel K. Garner, the assistant director, is now in charge of the museum.

Ten Delegates

(Continued from page one)

large) who have petitioned (and who are considered pro-Robert Taft), the Eisenhower men chose ten of the filers, despite some complaints from unchosen filers who have also expressed partiality toward Eisenhower or for the state's choice.

A spokesman for the Eisenhower camp said it is unfortunate that the move had to be made—leaving some Ike supporters comparatively out in the cold—but the situation in Oregon which allows candidates to run unpledged necessitated the counter-tactic.



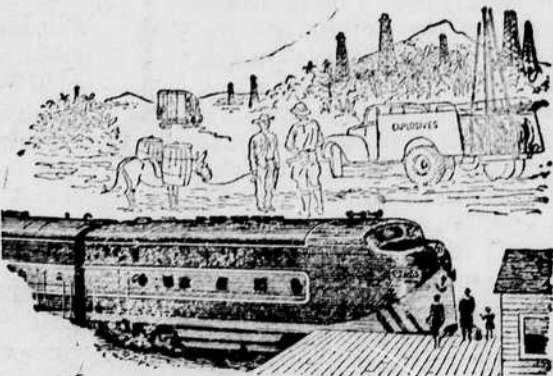
"Am I supposed to be glad you're big?"

Many people write us such comments as this: "I've heard people talk against big companies like you. Lately I've been reading your statements about bigness. Am I supposed to be glad you're big?"

The answer to this question depends on your answer to certain others. Some people have come to feel that bigness itself may be bad. Consider the good that comes from this same bigness.



Do you like new and better things? Standard has spent over \$35,000,000 on research and technical service in the last 5 years, developing new or improved products, and new raw materials for other companies. Yet only when allowed to grow big, by serving you better, can we take on the work and risk involved.



Are you glad you have the conveniences of this "machine age?" They depend heavily on oil. You're assured an ample supply of oil by the enterprise of big companies like Standard. We seek out new crude reserves, in this country and abroad, with exploration that may cost millions before the first gallon is found.



Do you like a bargain? You're getting one in gasoline. Except for taxes, gasoline today costs just about what it did in 1925. (And it's better gas; 2 gallons now do work that then took 3.) Why? Largely because of competition among big oil companies.



Do you want to keep your country strong? It takes big companies to back our fighting men and keep defense goods in full supply. Standard is at work for our government on aviation gasolines, atomic research, synthetic rubber, and other vital projects.

Obviously, there are countless ways to express the benefits you gain by our bigness... countless questions we could ask, to which you'd probably answer "yes" just as readily. And if you like the things that bigness brings, then you can be glad we're big.

STANDARD OIL COMPANY OF CALIFORNIA
 • plans ahead to serve you better