

# Book-Minded Houses Compete For Josephine Harpham Cup

The University of Oregon living organization which has stimulated the greatest interest among its members during the current year for the house library program as a mean to award and better will be awarded the Josephine Evans Harpham Silver Cup near the end of the school year.

The cup, which is now held by University House, a women's cooperative, was established by Josephine Evans (Mrs. Everett Harpham of Eugene), a graduate of the

University of Oregon and an active member in the Association of Patrons and Friends of the University of Oregon library. The award was suggested by the work done by Miss Bernice Rise with the house library program.

### Twelve Year Cycle

The current cup is to be awarded for 12 years, after which another member of the Harpham family is to provide a similar award. When the 12 years ends the cup will be given permanently to the living organization which has won it the most times.

Any living organization is eligible to compete for the cup if the house librarian attends all meetings of the house librarians association, keeps the record of the books read and the names of the students who read them, and has a reading program outlined that is approved by the library staff member in charge of the house library program. The houses must declare their intent to compete by Oct. 15 each year.

### Based on Five Things

The award is based on five things; the number of books borrowed per student in the house, quality of books borrowed, range of reading interests represented, the improvement in reading during the year in amount quality and range, and the grade point average of the house during fall and winter terms.

The contest will be judged by the member of the library staff in charge of the library program.

# Chase Top Man For Ugly Title

Neil Chase, Phi Sigma Kappa, took a commanding lead in the race for Ugliest Man on Campus Monday with \$5.02 to his credit. Chase led by more than two dollars over his near rival with two days remaining before the elimination— which cuts the field down to six.

In second place was Ulrich Trumpener, Sherry Ross and Omega halls, with \$2.40. Third, fourth and fifth places, in that order, went to Ray Karnofski, Sigma Alpha Epsilon, \$.56, and Al Barzman, Sigma Alpha Mu, \$.52.

## Preview Luncheon

(Continued from page one)

fairs, and Ray Hawk, director of men's affairs.

Approximately 40 minutes of the luncheon. The entertainment will be drawn entirely from campus sources.

### Choir to Sing

The program will be opened by the University Choir, which will present several numbers. The rally squad will then take over and will lead the group in a number of Oregon songs and yells.

Sheets of paper containing the songs and yells will be distributed to the high schoolers so that they can take part in the activity.

Sub-committee chairman for the event are: Barbara Keelen, speakers; Marilyn Patterson, entertainment; Betsy Thayer, tickets; Nancy Randolph, rally squad; and Ann McLaughlin, serving and clean-up.

# WSSF Brings Aid to Students In Greece Through Field Office

By Sally Thurston

Needs among the students of Greece remain many and great in spite of the fact that the civil war is over and conditions are becoming more stabilized.

At this stage it is still essential to maintain a World Student Service Fund field office in Greece for the present time, no alternative means of carrying out a program in this country has been found.

In the isolated situation of Greek students, field delegates form a positive link between them and the outside world and are able to stimulate a two-way flow of ideas and information. The presence of field delegates also stimulates fund-raising in Greece for Greek students from both governmental and private sources.

### Valuable Effect

One of the most valuable effects of the presence of field delegates has been the resulting "extra-budgetary" giving, especially in "gifts in kind," to an extent which more than doubles the budget allocation of WSSF.

The field delegates during the past year, have established contacts with the university people both in Athens and Salonika and they hope to establish a Greek committee in the not too distant future.

### Emphasis Is on Material Aid

This year, the principle emphasis in the field of material aid will be put on the granting of fi-

ancial assistance to needy students, the distribution of commodity gifts and assistance to student hostels as well as to the general field of student health.

The economic situation in Greece makes the distribution of food and clothing still an important means of assistance and these goods are usually provided by gifts in kind.

In addition, the scholarship scheme remains the most important and significant project now operating in Greece. It has the effect also, of being of considerable self-help value in inspiring assisted students to find other sources of income to enable them to continue their studies.

### Academic Merit Among Needy

More than 100 students were helped in the first nine months of the financial year 1950-51. Selection is made on the basis of academic merit among needy students by a special scholarship committee. This help takes the form of part payment of university fees

## Jones on WSSF

William C. Jones, dean of administration, made the following statement last week concerning the WSSF drive:

"The World Student Service Fund is the vehicle which is afforded to American students to extend a helping hand to students in other lands where war, social upheaval and famine, have deprived these students of the resources for the support of higher education. The University of Oregon has always been responsive to this opportunity of aiding in the building of nationality, race or creed. The WSSF drive has always found ready and generous support on this campus because it commends itself to our good sense and to our sense of humanity."

to gifted students without resources, or part payment of canteen fees in special cases where this type of help is needed.

All the hostels are badly in need of help, especially the men's hostels in Athens and Salonika. They are lacking such basic things as furniture and bed linen. And, in some cases, even chairs and tables for study rooms are required.

### What WSSF Can Do

A good example of what WSSF can do to ease the hostel situation is the case of the university girls' hostel in Athens.

Late in 1950 the hostel was in a financial crisis. At this time the WSSF field office arranged for a supply of coal for the winter. It also arranged to provide the hostel with powdered milk, sugar and cocoa to enable the hostel to serve breakfasts, and they were encouraged to make this a cooperative endeavor.

Now the field delegate is seeking to arrange for the electrification of the hostel kitchen to facilitate the preparation of the breakfasts, and it is later hoped that all the meals will be able to be prepared in this way. This will also enable the hostel to have cheaper electricity for all purposes.

### TB Rate High

One of the effects of war and deprivation in Greece has been the high rate of tuberculosis. It is estimated that three per cent of the population have the disease in active form. There are about 5000 beds for over 200,000 cases and all sanatoria have long waiting lists.

WSSF has distributed food packages to students suffering from malnutrition and adenitis, a pre-tubercular condition. Much time is spent in examining and investigating the applications of medical cases by WSSF in an effort to improve conditions.

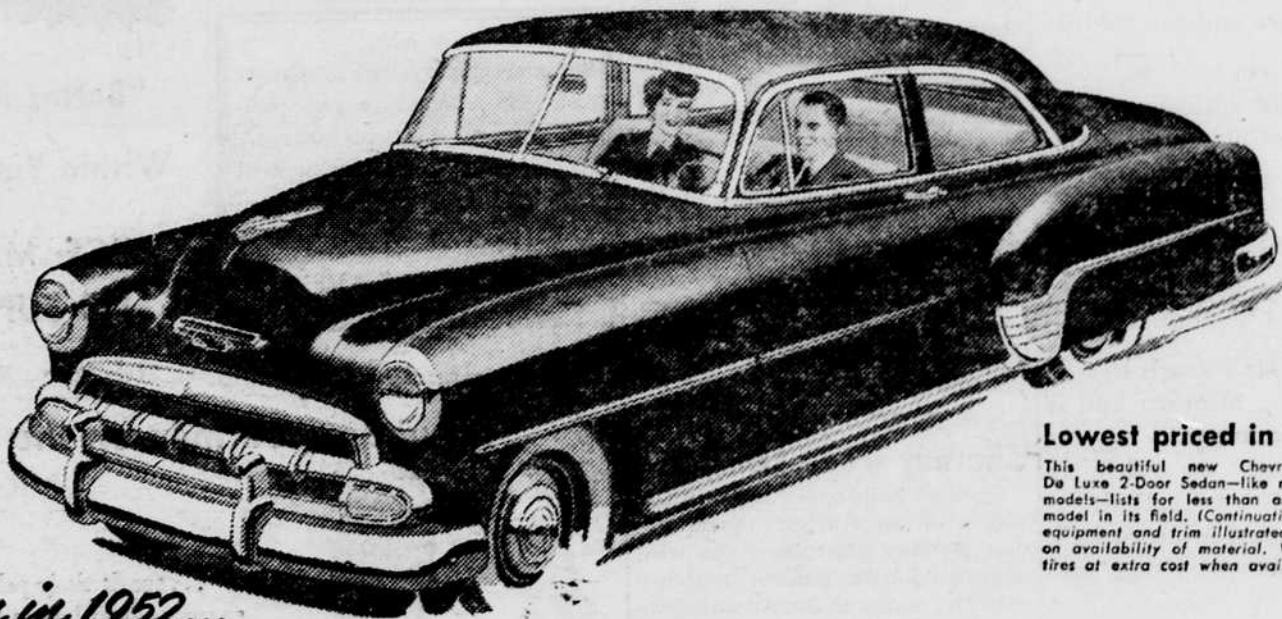
Now You Can Wear  
The official  
UNIVERSITY OF OREGON  
**RING**

This handsome ring was adopted officially by the ASUO and the Alumni Association in 1947, and is designed by the L. G. Balfour Company.

It comes with a variety of stones in either 10K Gold or Sterling settings containing high reliefs of the University seal and Deady Hall. Prices range from \$15.75 to \$29.50.

Fraternity letters can be added to stone top at small additional charge. Personal initials and class year engraved inside ring free.

Samples Now on Display  
**Alumni Office**  
Mezzanine,  
Erb Memorial Union  
—Place Your Order Now—

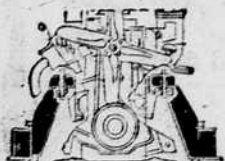


### Lowest priced in its field!

This beautiful new Chevrolet De Luxe 2-Door Sedan—like many Chevrolet models—lists for less than any comparable model in its field. (Continuation of standard equipment and trim illustrated is dependent on availability of material. White sidewall tires at extra cost when available.)

# Again in 1952... lowest-priced line in its field!

Yes, Chevrolet brings you lowest prices on model after model... as well as all these fine features found in no other low-priced car!



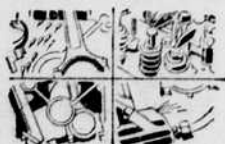
CENTERPOISE POWER



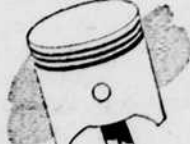
LARGEST BRAKES



WIDEST COLOR CHOICE



4-WAY ENGINE LUBRICATION



CAST IRON ALLOY PISTONS



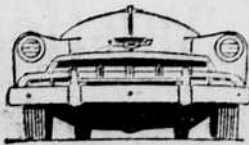
SAFETY PLATE GLASS ALL AROUND



POWERGLIDE AUTOMATIC TRANSMISSION\*



UNITIZED KNEE-ACTION RIDE



WIDEST TREAD



BODY BY FISHER



F-7-EYE PLATE GLASS



MOST POWERFUL VALVE-IN-HEAD ENGINE

\*Optional on De Luxe models at extra cost.

MORE PEOPLE BUY CHEVROLETS THAN ANY OTHER CAR!



The Only Fine Cars PRICED SO LOW!

## SEE YOUR CHEVROLET DEALER FOR ALL YOUR AUTOMOTIVE NEEDS!

Conveniently listed under "Automobiles" in your local classified telephone directory