

### CAMPUS CALENDAR

12 noon—Art Comm., 110 SU  
 3 p.m.—Faculty Wives Tea, Alumni Hall  
 4 p.m.—AWS, 315 SU  
 SU Rec. Comm., 313 SU  
 WAA Promotion, 112 SU  
 Foreign Students, 110 SU  
 USA, 113 SU  
 4:30 p.m.—SU Board, 337 SU  
 6:15 p.m.—Theta Sigma Phi, 333-334 SU  
 6:30 p.m.—WAA Officials, 113 SU  
 6:45 p.m.—Kellems House, 213 SU  
 7 p.m.—APO Pledges, 111 SU  
 Student Court, 315 SU

### Club to Sponsor Costume Party

A musical costume party for the Oregon State Cosmopolitan Club and Plymouth House, sponsored by the University Cosmopolitans will be held from 8 to 12 p.m. Friday at Plymouth House, 490 E. 13th Streets.

International records for dancing and unusual costumes will be the keynotes of the party, with a prize being offered for the best costume. Dorees Jeppeson, president, reported.

Membership in the club is open to all interested persons, foreign students in particular, Miss Jeppeson said. Members and their guests are welcome to the Friday party. Refreshments will be served.

### Game Causes Dance Cancellation Today

The regular Wednesday night square dancing session, usually held in the ballroom of the Student Union, has been cancelled this week due to the home basketball games.

Feb. 21 is the date set for the next meeting of square dancers, according to Miss Rosamond Wentworth, instructor.

### Art Exhibit Depicts Play Productions

A current art exhibit on display in the Student Union art gallery features photographs of play productions of various high schools, junior colleges, and universities on the west coast.

The exhibit was part of the program of the Northwest Drama conference that was held at the University last weekend.

The photos, which will be up until Friday, depict what other schools are doing in the field of drama.

### Preview Petition Deadline Extended

Deadline for petitions for Duck Preview chairmanships has been extended to 5 p.m. Friday, Chairman Georgie Oberteuffer announced Tuesday.

The weekend, set this year for Apr. 13 to 15, is designed to acquaint visiting high school seniors with the University.

Chairmen and workers are needed for 11 committees: registration, invitations and promotion work with high schools, publicity, transportation, hospitality (including welcome booklet and tickets)

### Advertising Jobs Open on Emerald

Workers with layout or art experience are needed by the Emerald advertising staff. Layout Manager Keith Reynolds announced Monday.

Working hours would be between 2 and 4 p.m. any afternoon.

Interested persons may contact Reynolds between 2 and 4 p.m. today at the Emerald shack.

dance, luncheon, housing, exchange dinners, educational tours, and special events.

Freshmen, sophomores, juniors, and seniors are eligible to petition.

### PE Club to Handle ASUO Sports Night

Phi Epsilon Kappa, men's physical education honorary, will handle the Sports Night to be held during Duck Preview Weekend, Herb Nill, ASUO vice-president, announced at Monday night's Executive Council meeting.

The group will submit three or four names to the council, one of whom will be chosen chairman. The council had originally asked for petitions but no one qualified to handle the job applied.

Nill also announced that R. W. Leighton, Dean of the School of Health and Physical Education, had approved plans for intramural boxing. Competitions will probably begin next April.

### EMERALD ADS BRING RESULTS



When the deep purple falls—over sleepy garden walls—the

### DUCK INN

On 11th by the Mayflower —is still open  
 1:00 a.m. WEEK NIGHTS  
 2:00 a.m. FRIDAYS  
 3:00 a.m. SATURDAYS

### MAYFLOWER TODAY

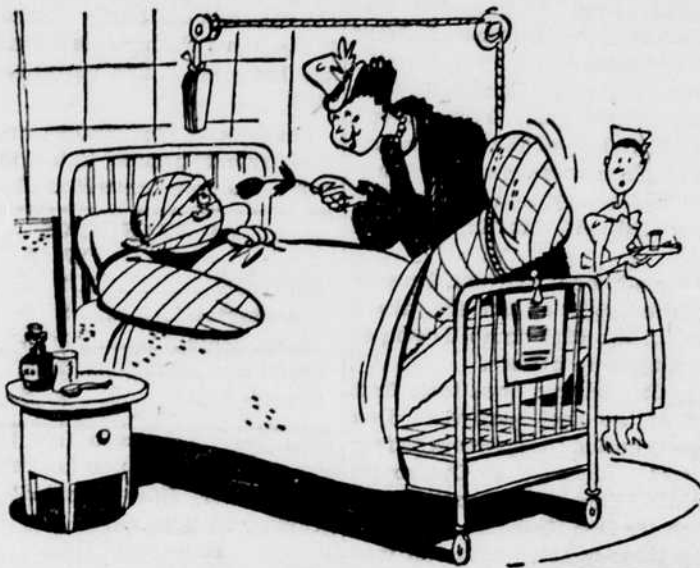
### "A REMARKABLE FILM!"

"Brilliant . . . Fascinating! . . . Superb! . . . moves with a triumphant pace . . . An outstanding job of film making!"  
 —Herald Tribune

"An arresting film by the extraordinarily clever Cocteau . . . filled with beauty and fascination!"  
 —PM



JEAN COCTEAU'S  
 Modern version of the Tristan and Isolde legend



"I TOLD YOU TO GET OUT OF THE WAY WHEN THEY HAVE A SPECIAL AT ERB SODA SHOP."

### SPECIAL!!

STUDENT UNION  
 SODA BAR

CHERRY-MARSHMALLOW  
 SUNDAE

\$ .23

OPEN

7:30 a.m.—10:45 p.m.

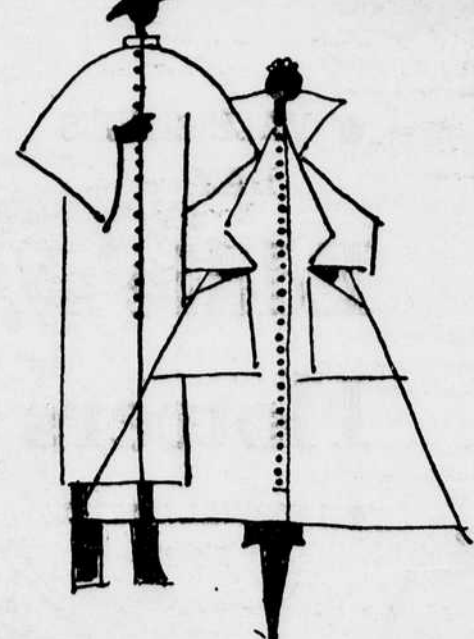


### Erb Memorial Building

SODA BAR

NOTICE... THIS SPACE RESERVED FOR

### "Fashion Forecast From Russell's"



### For The "Cotton Pickers Ball"

- Gay Cotton Skirts
- Peasant Blouses
- Cotton Dancing Dresses

Sportswear Main Floor