

More of the Same...

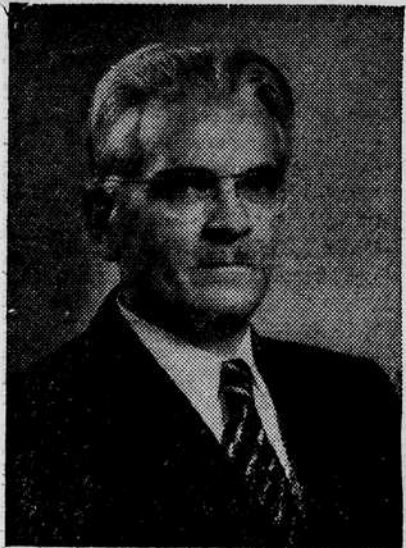
Mostly cloudy with scattered showers, rain late Tuesday night. High temperature 45 degrees; low 40.

VOLUME LII

Sasnett Handles Culture

J. Randolph Sasnett, and his wife, Mrs. Martena Tenney Sasnett will handle the cultural series of Religious Emphasis Week Jan. 21-24. Religious art, culture, and philosophy will be discussed by the Sasnetts.

Sasnett is executive director of the Religion in Education Founda-



J. Randolph Sasnett

tion in Los Angeles. He has been a leader and featured speaker in religious weeks all over the country.

A special lecturer on literature of the Bible, Sasnett has also lectured extensively on marriage and home problems and was director of the Wesley Foundation at the University of Washington for 10 years.

In 1936 he represented the United States at a world friendship through church work in England. In 1947, his book "Living Memorials" was published. He has written articles for religious journals and poems and sonnets in magazines and anthologies.

During U. of O. Religious Emphasis Week, Sasnett will be available for individual conferences in (Please turn to page seven)

'Earthshaking' Talk to Clarify Scientific Terms for Laymen

Pacific coast earthquakes will be discussed Jan. 30 and Feb. 1 in the Student Union by Perry Byerly, professor of seismology at the University of California and a member of the National Academy of Seismologists' Society.

The lectures will be the third and fourth of a series of six being delivered by Byerly. The first two will be given Jan. 23 and 25 at Oregon State College, and the last two, on Feb. 6 and 8 at Lincoln High School in Portland.

Byerly is the 1951 Condon lecturer, sponsored by the State Board of Higher Education to make scientific research more understandable to the layman.

Byerly's lectures will be concerned with the causes and geological distribution of earthquakes as well as their effects and mitigation. The talks are supported by the Geological Society of the Oregon Country and the Oregon Academy of Science.

A graduate of the University of

California, Byerly has spent his academic career as a seismologist. In 1924 he received the doctorate



Perry Byerly

in seismology from California. He also holds the bachelor of arts and master of arts degrees. He was awarded a fellowship by California in 1921.

In 1917, Byerly began working with the Office of Seismological Research and Development of the United States. He joined the faculty of the University of Nevada and was an instructor of physics until 1925. In that year he was in charge of the seismographic station at the University of California and obtained a full rank of professor of seismology in 1941.

He is a member of the National Academy of Seismological Societies, a Fellow in the Geological Society, a member of the Geophysicists Union, a member of the Society of Explorers and Geophysicists and of the California Seismologists Association.

Byerly's fields of research have been in earth structure, roots of mountains, and energy in earthquakes.

Free Doughnuts Given at SU Today

Free doughnuts will be given with each cup of coffee purchased in the Student Union Soda Bar from 4 to 5:30 p.m. today, reported Director Dick Williams.

Price of doughnuts in the SU has dropped from eight to five cents apiece, effective today, according to Williams.

Next Monday Blood Donation Day at Oregon

University of Oregon students will take part in the University's first blood donation drive one week from today in the Student Union.

With only a week remaining until the collection of whole blood (with 350 pints the assigned goal) campus Red Cross chairman Donna Mary Brennan urged students to get their pledge cards and parental releases for persons under 21 turned in by the deadline. Releases should be turned in with the cards.

Pledge Cards Due

The pledge card deadline for women's houses is 5 p.m. today, or before Wednesday at the latest. Parental releases for women 18 to 21 must be turned in by 5 p.m. Wednesday. Married women need not turn in releases. Pledge cards and releases should be given to house presidents, who must turn them in to Leslie Tooze at Kappa Alpha Theta by the deadline.

Men's house presidents must turn in pledge cards and releases for men 18 to 21 in Herb Nill by 5 p.m. Wednesday.

Off-campus students who have not obtained pledge cards should do so as soon as possible—in the Co-op or in the Student Union lobby. Their cards and releases may be dropped in one of the boxes in those two places. Faculty members should turn in their cards to Howard Lemons at Johnson Hall by today.

Jaundice Rule Changed

The parental release for persons 18 to 21 has been printed in the Emerald several times last week, and is again printed in this issue.

One change has been made from information which previously ap-

(Please turn to page seven)

Campus 'Dimes' Drive Starts Rolling Today

Class Office Petitions Due At 5 Today

Petitions to fill vacancies in three class offices are due at 5 p.m. today. The three positions will be filled by the Executive Council at its meeting tonight.

Vacated offices are senior class secretary, junior class president, and sophomore class vice-president.

Senior petitions may be submitted to Steve Church, Theta Chi; or Flo Hansen, Alpha Omicron Pi.

Petitions for junior class president are due in the ASUO president's office in the SU.

Sophomores may turn in petitions for the vice presidency to Helen Jackson, Highland House; Mary Gillham, Alpha Chi Omega; or Delores Parrish, Alpha Xi Delta.

The senior class office was vacated by Anne Goodman, who was married during Christmas vacation. Low grades were responsible for the vacating of the other two offices. Vern Beard became ineligible at the beginning of fall term for the junior class presidency to which he was elected spring term. He was succeeded by Willy Dodds, who resigned for the same reason at the beginning of winter term.

Helen Jackson, vice-president of the sophomore class, assumed presidency of that class when Joe Kiaser was declared ineligible because of low grades at the beginning of fall term.

SU Concert Tuesday

First Student Union record concert of the year will be held at 8 p.m. Tuesday in the SU music listening rooms. See story on page six.

1951's March of Dimes campaign gets underway at the University today with campus-wide contributions going toward fulfillment of Lane County's \$50,000 quota to fight polio.

Lillian Schott, junior in sociology, was named chairman of the drive Friday and immediately laid plans for placing "iron lung" containers in the various living organizations. Posters, pamphlets, and other materials also are being distributed among the student body. Envelopes addressed to the Eugene office of the March of Dimes will be made available to students who wish to mail in their contributions.

Appointments are being made of house representatives who will be in charge of collections for their individual living groups.

Miss Schott said that present plans call for a series of flying speeches, setting up of booths in the Co-op and Student Union, and special events which will be tied in with the drive as it progresses.

Campaign Ends Jan. 31

The campaign officially will conclude Jan. 31 but may be extended if necessary in order to put the University over the top, she stated.

Last year the local chapter of the organization ran out of funds and the National Foundation for Infantile Paralysis had to send \$14,000 to relieve the emergency, according to Mrs. C. A. Horton, Lane County campaign chairman. Half of the money raised annually goes to the local chapter and the other half to the national foundation for purposes of research, purchase of equipment, and epidemic relief.

More than \$21,000 was spent on polio care in Lane County during the first 10 months of 1950. Thirty-nine persons were hit by the disease during the year. In 1949 the total was 42.

Expense Breakdown

Of the 1950 expenditures, approximately \$12,000 went toward hospitalization fees, \$2,400 for doctor's fees; \$1,756 for crutches, braces, etc.; \$3,027 for physical therapy; \$1,048 for nursing fees; and \$390 for laboratory fees. Other expense items included ambulance, X-ray, medicinal, and transportation services.

In some instances polio patients require hundreds and even thousands of dollars worth of treatment and hospitalization.

Mrs. Horton commented that expenses are increasing every year. Funds are presently exhausted and she expressed the hope that the county would go over its quota this year.

The national March of Dimes campaign officially opened Sunday with a broadcast originating in Wytheville, Va. The town was hit hard by polio in 1950.

The goal set for the national drive is \$50 million.

Medford Attorney On State Board

The Oregon Senate Thursday confirmed the appointment of J. Van Dyke, Medford attorney, to the State Board of Higher Education, replacing Phil Metschan, Portland, who resigned because of ill health.

Van Dyke, a graduate of Willamette University's law school, served as speaker of the Oregon House of Representatives during the forty-fifth legislative assembly two years ago.

Van Dyke will serve on the State Board of Higher Education until 1953, when the term expires.

Dull, Strong Forum...

See page 7 for story of the Reed College discussion of "Crisis in the Far East" participated in by Paul S. Dull, and pro-communist Anna Louise Strong.

NUMBER 37

First Marriage Lecture Slated Tuesday Night

"Social Adequacy" will be the subject of the first Marriage and Family Series lecture at 8 p.m. Tuesday in 207 Chapman, which will be delivered by Dr. and Mrs. O. R. Chambers.

The remaining lectures will be on "Dating," Jan. 23; "Engagement," Jan. 30; and "Marriage," Feb. 6. The lectures are sponsored by the YW-YMCA.

Tickets at Co-op

Tickets for the lectures are available at the Co-op. The one ticket, at 50 cents, is good for the four lectures.

The Chambers' lecture Tuesday night will discuss the background of social relations preceding marriage, and how an individual's youth, his religion, family life, and social habits fit in to his selection of the right person to marry.

The lecturers, Dr. and Mrs. Chambers, are both practicing teachers of psychology. Chambers is professor and chairman of the psychology department at Oregon State College. He was an instructor at Ohio State University from 1923-26. He came to Oregon State in 1929.

Speakers' Experience Broad

Chambers is a board member of the Benton county Mental Hygiene Committee, and served as president of the organization last year. He is also active in the Pacific Northwest Conference of Family Relations, and is widely known as a speaker throughout the state.

Mrs. Chambers received the master's degree from Indiana University and has done graduate work at the University of Texas. During World War II she taught psychology at OSC for four years.

Athletic Cards Now Available

Athletic cards will be issued beginning today at the athletic business office in McArthur Court. The office will be open from 8:30 a.m. to noon, and 1 p.m. to 5 p.m.

Student body cards (cash register receipts) must be presented in order to receive the cards. Ticket Manager Darrell Robinson emphasized that the cards will be necessary for admittance to the Oregon-Idaho basketball series this weekend.

The athletic cards are the same type that have been used in the past, and replace the one issued during fall term for the football season. The cards take the place of the proposed identification and athletic cards which were supposed to have been issued last week. A kink in details prevented issuance of the picture cards this year.