

Ducks Await Buffs; Final Two Opponents Feature Single wing.

By Charles Peterson

Two single-wing teams loom as the last opponents for this season's Oregon Ducks with the first of these, the University of Colorado Buffaloes, coming up Saturday on the latter's home grounds in Boulder, Colo.

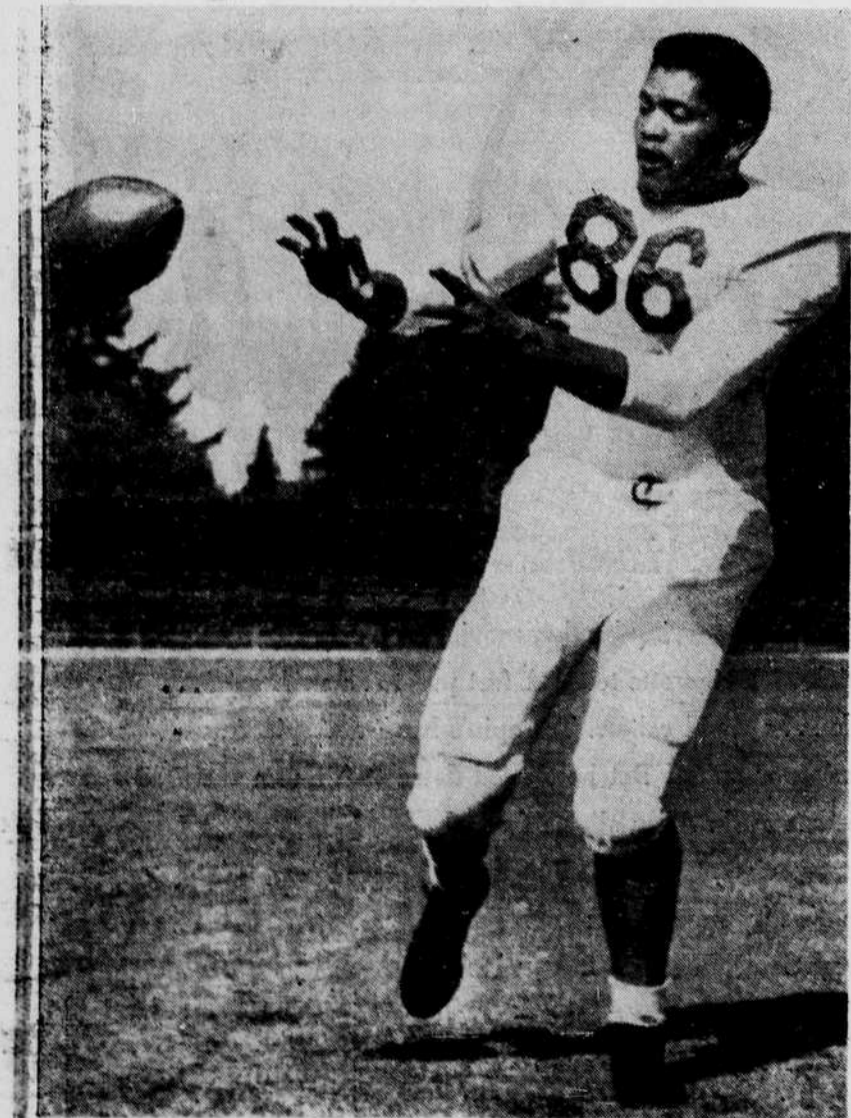
Coach Jim Aiken worked the Ducks hard yesterday in what he termed a rough and highly satisfactory scrimmage. The defensive unit came in for praise, especially End J. D. McCowan and Jerry Shaw. Jim Calderwood, who had seen his only action on offense, looked sharp at a defensive halfback post.

Hal Dunham had another good day at his quarterback passing post, hitting Ends Monte Brethauer and Jake Williams and Halfback Tommy Edwards regularly. Don Sloan sparked the running attack as Aiken kept Edwards and Earl Stelle from the heavy contact work.

With the traditional battle with Oregon State only a week after the Colorado game, Aiken welcomes the opportunity to tangle with a team which employs an offense similar to that of the Beavers. Both feature a single-wing and generate most of their power on the ground.

The Ducks will take along oxygen machines to compensate for the thin air which prevails in the Rocky Mountain home of the Buffs. Aiken also plans to use his reserves extensively to combat the high altitude fatigue. Nearly all members of the traveling squad can expect to see action, he said.

Backfield Coach Johnny McKay saw Colorado lose to Missouri 21-19 last Saturday and said the Buffs outplayed their rivals despite the loss. Colorado also scored three times against powerful Oklahoma while losing, 28-18.



J. D. McCOWAN, left end for Jim Aiken's Webfoots, has returned to action after missing most of the season because of a leg injury. The 220-pound veteran of the 1947 season excels as a defensive wingman, a post at which he combines a lot of speed with a lot of size.

Baker Rehired

SAN DIEGO—(P)—San Diego's Pacific Coast baseball team will be managed again next year by Del Baker, who piloted it to second in the 1950 standings.

IM Battles One-Sided

By Clark Smith

Sigma Chi, Sherry Ross, Beta Theta Pi, Philadelphia, and Phi Sigma Kappa claimed victories in Tuesday's intramural volleyball action. Pi Kappa Phi won by forfeit over Omega Hall.

The Phi Kaps were badly beaten by the powerful Sigma Chis, 15-1, 15-2, but put up a hard fight all the way.

Sherry Ross defeated the Tekes easily in the first game, 15-1, but was pressed in the second contest before winning, 15-7.

The Beta Theta Pi series with the Pi Kaps saw the Betas win, 15-9, before blanking the enemy in the second battle.

Philadelphia House rolled over the Yeomen, 15-2, 15-4, in a pair of raggedly played but hard-fought encounters.

The day's last series saw the Phi Sigs hand Delta Upsilon severe beatings in two meetings, 15-6, 15-5.

The best acting in the movies is done by the fellow who smiles when you crunch popcorn right in his ear.

EMERALD Sports

Hockey Artists Await Tourney In Vancouver

The Evergreen and Cascade Hockey Clubs combined forces to form a new team called the "Duckettes." This team will represent the University of Oregon at the annual Northwest Hockey Conference in Vancouver, B. C.

The Duckettes, under the supervision of Miss Janet Woodruff, head of the PE Department for women, will leave the campus at 6 a.m. Friday. Miss Mosilionis, Miss Murray, and Miss Henderson, all faculty members of the PE department, along with Miss Woodruff, will provide the transportation by taking their cars.

Seventeen Make Trip

Seventeen girls will make the trip, eight from the Cascade Club, and nine from the Evergreen Club. Girls from the Evergreen Club are: Norma Muni-President, Lois Hamar-Secretary-Treasurer, Margaret Smith-Field Manager, Beverly Wild, Mac McCarnston, Monnie Gutchow, Lou Anne Wolf, Sally Thurston, and Stefani Brooks.

Girls from the Cascade Club are: Belle Doris Russell-President, Bunny Bradley, Secretary-Treasurer, Naomi Lorn, Field manager, Mary Jordon, Mary Ann Rose, Frances Hussey, Catherine Elder, and Lucille Gilson.

Tourney Opens Saturday

The tournament will be played Saturday and Sunday, November 18 and 19. A large banquet will be held for all participating teams Saturday evening. Other colleges attending are University of Washington, Washington State College, College of Idaho, Oregon State College, University of British Columbia, Western Washington College of Education, and College of Puget Sound.

IM Volleyball

- Today's IM Schedule
- 3:50 Court 40 ATO A vs. Legal Eagles
 - Court 48 SAE A vs. Campbell
 - 4:35 Court 40 SAE B vs. Sigma Chi
 - Court 43 Hunter B vs. Tekes
 - 5:15 Court 40 Minturn B vs. Campbell
 - Court 43 Theta Chi B vs. Sig Ep

Prep Game Saturday

University of Oregon students will be admitted to the Oregon City-Eugene high school football game on Hayward Field Saturday at 2 p.m. for 60 cents. One thousand seats in the west grandstands will be available for college students.

The prep game is a state championship quarter-final tilt. Eugene high is District 4 representative and Oregon City is from District 6.

Winner of this game will meet the winner of the Astoria-Grant high game in the state semi-finals. If Eugene high wins, the game will be played Thanksgiving Day on Hayward Field.

The Eugene high Axemen, defeated only once this season, are favored to cop Saturday's tilt. The combination of air power, sparked by Quarterback Wally Russell, rated one of the two top quarters in the state, and ground power

Texas Guard Top Lineman

NEW YORK—(P)—After two successive weeks that saw Pacific Coast Conference players win, this week's Associated Press Lineman of the Week award was snared by a Southwest Conference lineman—Lewis "Bud" McFadin, Texas guard.

The nod went to McFadin for his sterling play against Baylor, a nip and tuck game won by Texas, 27-20.

Shifted to Defense

Normally an offensive left guard, he was shifted to defense in the second half and played a major role in helping to stop the Bears.

"If there was any doubt about McFadin's ability on defense, this game erased it," declared Texas Coach Blair Cherry.

Two other players in the Southwest Conference—Andy Hillhouse, Texas A & M end, and Bill Howton, Rice end—also received high praise.

Hillhouse Liked

Texas A & M upset Southern Methodist, 25-20. Afterward, two SMU players complimented Hillhouse. Said Neal Franklin, SMU tackle, "Hillhouse is the best blocking end we've met."

Aiken Says Grid Style May Alter

By Al Karr

The short punt formation used by the freshman football team against the Washington Pups Saturday is partly an indication of what Oregon may use during next year's grid season. So said Coach Jim Aiken at Tuesday night's movies of last Saturday's Washington-Oregon football game.


Aiken said he may combine a single wing attack with the T-formation next year, especially with a back like Jack Morris, this year's frosh star. Aiken rates Morris the best back to come out of the state of Oregon since Jefferson high of Portland produced Stanford's great Bobby Grayson.

"I'm an old single wing coach, myself," Aiken remarked. He said that he changed to the "T" during the war and stuck to it at Nevada when he "never coached the same squad two weeks in a row." (He has used it ever since producing Oregon's great Cotton Bowl squad of 1948 with Norm Van Brocklin running the squad.) Aiken feels, however, that next year more coaches will be using some single wing along with the "T".

In reply to a question from the floor during the question period which accompanies the showing of the movies, Aiken said the Stagg punt formation which Oregon has used so successfully this year will probably be outlawed by the rule-makers next year. Aiken feels that the fair catch, which was abolished this year, will be reinstated to protect the punt receiver.

Unforgettable as always

Hallmark Christmas Cards



Whatever your taste, whatever your budget, you'll find just the Christmas cards you want to send—in our larger-than-ever collection now on display. Come see them soon, won't you!

headquarters for Hallmark Cards

Goburn's film Shop

Corner 7th and Willamette