

UO Leads to Top Chest Allotment By 10 Percent

Thursday afternoon the University became the first Lane County group to exceed its quota when Community Chest figures were released by N. H. Comish, faculty chairman. The drive had achieved about 10 per cent more than the \$4,000 goal.

With collections from 20 living organizations not yet tabulated, the University total stood at \$4,445.49.

Pi Beta Phi led women's houses in total collections with \$42, while Kappa Kappa Gamma followed with \$38 in contributions. Chi Omega collected \$25 and Sigma Kappa contributed \$24 toward the annual appeal.

Sigma Phi Epsilon topped men's living organizations with \$23.91, followed by Nestor Hall with \$20.42, and Hunter Hall with \$19.80.

Did Good Job

"The University did a magnificent job for the Community Chest," Comish said in a statement Thursday afternoon. "The intent and effective work of all the captains and solicitors as well as the generosity of the contributors made it possible to make our quota and go beyond it."

"The task was made more difficult," Comish said, "by the flood, the national election, and Homecoming, which came in the midst of the campaign. Therefore, the students, faculty, and other employees of the University deserve special credit for the splendid result."

"As chairman of the University Chest campaign, I desire to thank all the participants for their hardy and cooperative support."

House, Dorms Donate

Georgie Oberteuffer, campus chairman, said Thursday that donations from 39 living organizations, SU and Co-op booths, and the off-campus drive had amounted to a \$528.07 total.

"I would like to express my appreciation of the hard work displayed on the part of house representatives and committee workers," Miss Oberteuffer stated.

Living organizations who have not yet turned in their money are requested by Miss Oberteuffer to do so today. Collections may be left at Kappa Alpha Theta.

French Choir to Sing

(Continued from page one) 1,000 a cappella concerts in Europe, the Near East, and all over the Western Hemisphere from Canada to Argentina.

Folk Songs on List

Their program here will consist of French folk songs, religious music, and American songs. This combination drew "rave notices" from New York critics after the choir's concert in Carnegie Hall two weeks ago:

"The cohesion of tone, the full sounds, the pianissimos, the crescendos and the diminuendos, the soprano solos that floated over the quiet voices of the men, the purity and the unearthly ensemble—all these features seemed to transform the hall into the likeness of a cathedral," the New York Times critic wrote.

Welles Airs Views to Press

(Continued from page one)

case of an emergency are the three constructive steps in foreign relations in the last five years."

Concerning the recent elections, Welles stated that he did not regard the results as a victory for McCarthyism. "The fact that it is an off-year is reason for a protest vote." He said it is easier to start than to stop a smear in commenting on the Communist witch-hunt.

Welles declined to discuss the possibilities of a resignation by Secretary of State Dean Acheson. However, he observed in deference to a recent prediction by a nationally syndicated columnist that Chief Supreme Court Justice Fred Vinson would succeed Acheson, that Vinson lacked previous experience. "Averell Harriman, secretary of commerce and former foreign ambassador, has much more experience in foreign relations," he commented.

Furthermore, Welles said that "it is doubtful whether Vandenberg's non-partisan policy would be feasible in view of the election returns.

Regarding rearmament of Germany and Japan, Welles explained the former would welcome rearmament if the Schuman Plan goes to combat Communism.

New NORCROSS cards of glowing beauty!



25 designs - each one different for only one dollar!

Your favorite Christmas decorations glow with new charm in the Christmas Special. Holly, candles, jingle bells, against rich green, warm red and snow-white backgrounds . . . Truly a Christmas Treasure Chest of Cards!

CLAYPOOL'S

886 East 13th

Calling all Girls!

SIZES 9-11

HALF PRICE SALE

STOP

LOOK

BUY

WESTGATE SHOPPE

Now

SHE'S SORRY NOW,
SORRY AND HOW
SHE WAS IN A TRANCE,
LOST HER LAST CHANCE TO

Now

RESERVE AN OREGANA

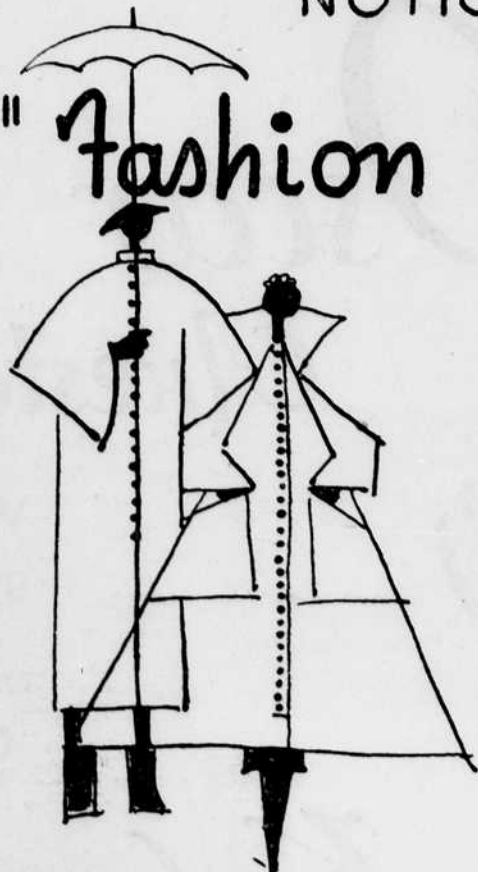
FULL PRICE \$6.00

PARTIAL PAYMENT \$3.00 NOW

\$3.00 WINTER TERM

NOTICE... THIS SPACE RESERVED FOR

"Fashion Forecast From Russell's"



SILK SQUARES

18 INCH, HAND-ROLLED EDGES . . .

They come in a very good assortment of solid colors, prints, polka-dots, cotton-pickers, and plaids.

Ribbon Ties by Vera.

\$1.00 to \$1.75