

## Nye Participate In Music Panel

Robert E. Nye, professor of music education, returned recently from the annual conference of the Oregon Music Educator's Association Friday and Saturday.

Nye participated in a panel discussion on "Music for Every Child, Every Child for Music—Fact or Fiction."

Miss Maude Garnett, professor of public school music, was chairman of a panel on problems of music in the elementary school.

Other speech topics were "A Superintendent Evaluates Our Present Program," "What a Parent Expects of the Music program," and "An Ideal Program of Music Education for Elementary Schools."

## Three UO Profs To Attend Meet In Pennsylvania

Three University professors will attend a workshop conference at Buck Hill Falls, Pa., Nov. 26 to 28, sponsored by the Council on Medical Education and Hospitals of the American Medical Association and the Association of American Medical Colleges.

Representing Oregon will be E. L. Johnson, dean of the College of Liberal Arts; Carlisle Moore, professor of English; and A. H. Kunz, professor of chemistry.

The conference is being held to assist in the study of premedical education carried on by Dr. Aura E. Sveringhaus, associate dean of medicine of Columbia University, and Professor William E. Cadbury Jr., of Haverford College. The study is being made to determine, among other things, the influences affecting young people who plan to enter the medical profession.

About 30 liberal arts colleges will be represented at the conference by administrators, science advisers, and professors. The number has been limited by invitation to 100.

## Talent Auditions Of Entertainers Slated for Today

A preview of Oregon talent will be held at 4 and 7 p.m. today in the Student Union, with auditions slated for campus entertainers, Gerry Pearson, campus entertainment chairman, announced Monday.

Purpose of the auditions, Miss Pearson said, is to line up talent for a file which can be utilized to secure talent for campus and off-campus entertainment at a moment's notice.

Miss Pearson emphasized that acts and skits need not be polished. "We just want to find the kind of talent we have on campus which can be used."

Included on Miss Pearson's list of talent are masters of ceremony song and dance routines, vaudeville skits, monologues, "and lots of others."

Both auditions will be held privately. There will be no criticism of any act, said Miss Pearson. "We realize that the quickness of these auditions hasn't allowed time for perfection."

Prof: Is that your cigarette butt on the floor?"

Student: That's all right, professor, you saw it first."

## Community Chest Drive Swings Into Final Phase; 38% Needed

The Community Chest drive swings into its final phase today with thirty-eight percent of the \$4,000 campus quota remaining to be filled.

Students are asked to contribute to the Community Chest appeal today, making use of the booths in the SU or the Co-op or giving the money to house representatives, in order that the University goal may be reached. Pledges and cash gifts are also welcome.

House representatives should complete their collections today and turn money in to Georgie Oberteuffer at Kappa Alpha Theta tonight or Wednesday morning.

Barry Mountain is general student chairman of the Community Chest drive. Other committee heads are Tom King, assistant student chairman; Georgie Oberteuffer, campus chairman; Stu Richardson, promotion; Mike Lally, off-campus collection; and Lillian Schott, campus booths. Dr. N. H. Comish, professor in business administration, heads the faculty appeal.

Houses that have not yet picked up their Community Chest col-

lection material are Chi Psi, Merrick Hall, Omega Hall, Phi Delta Theta, Phi Kappa Sigma, Pi Kappa Alpha, Yeoman, and Zeta Hall. The material may be obtained from Miss Oberteuffer.

The Community Chest, through unification of effort and low campaign expenses, maintains a business-like control of budgets and an assurance of need, thus eliminating needless expense and quota inequality, according to King.

Local agencies served by the Community Chest are the American Cancer Society, Associated Services of Armed Forces, Boy Scouts, Community Center, Cottage Grove Youth Fund, Girl Scouts, Junction City Youth Fund, Salvation Army, Springfield Community Chest, St. Vincent de Paul, YMCA, and YWCA.

### 'Parley Voo' Meeting

A French "Causerie" will be held at the Side at 4 p.m. today. The purpose is to practice French, but the discussion is not necessarily academic.

All persons taking French, those interested in furthering their speaking ability, and all who can speak French, may attend.

## Onthank to Attend California Meeting

Karl W. Onthank, graduate placement director, will leave today for a meeting of the Western Personnel Institute in Pasadena, California.

A member of the academic council, Onthank will appear on the Institute's program.

In addition to the conference, he is to meet with alumni and personnel groups in California and Southern Oregon to discuss job opportunities for graduating students.

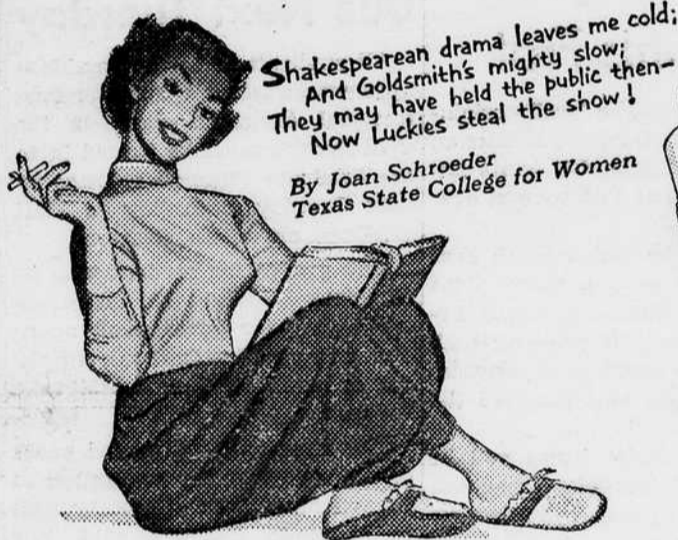
## YWCA to Hear Old 'Joe' Finalists

Joe College finalists will speak at a YWCA discussion sponsored by the Tuesday Freshman Service Commission at 4 p.m. Tuesday in the YWCA headquarters, Gerlinger. The subject of the panel will be dating and appropriate dress.

All freshman commissions may attend, according to Lillian Schott, junior adviser. The finalists are Carson Bowler, Phi Kappa Psi; Tom Bauman, Kappa Sigma; Hal Dunham, Theta Chi; Jim Livesay, Phi Delta Theta; Rod Bell, Alpha Tau Omega; and Fred Decker, Pi Kappa Phi.

## CAMPUS CALENDAR

- 9 a.m.—Police Officers Conv. 315 SU
- 11:45 p.m.—Chemistry dept., 11 SU
- 12 noon—SU Directorate, 11 SU
- YWCA, 112-113 SU
- 1 p.m.—Beta Alpha Psi, 114 SU
- 4 p.m.—Fulbright Interviews, 337 SU
- YWCA, Alumni Hall Student Court, 110 SU
- Univ. Entertainment Comm., 333-334 SU
- 6 p.m.—Phi Theta Upsilon, 110 SU
- 6:30 p.m.—Movies of Ore-WCA Game, Ballroom
- Alpha Phi Omega, 114 SU
- 7 p.m.—Univ. Entertainment Comm., 333-334 SU
- Christian Science Organization, 1251 Emerald St.
- I-VCF, Alumni Hall
- Fulbright Interviews, 337 SU
- Newman Club Exce Comm., 113 SU
- Inter-Dorm Council, 111 SU
- 7:30 p.m.—Forensics, 112 SU
- 8 p.m.—Law School Swat, 213-215 SU
- Recreation Comm of SU, 313 SU
- 9:30 p.m.—SU Ballroom Comm (Dance), 313 SU



I took a course in Chemistry;  
I tried a new reaction;  
I lit a Lucky with a match  
And got real satisfaction!

By Ronnie Friedman  
Columbia University



# Be Happy - Go Lucky!

The campus bells ring out the air  
That all the students like,  
But the air the campus belles prefer  
Is filled with Lucky Strike!

By Morton Greenberg  
UCLA



Enjoy your cigarette! Enjoy truly fine tobacco that combines both perfect mildness and rich taste in one great cigarette - Lucky Strike!

Perfect mildness? You bet. Scientific tests, confirmed by three independent consulting laboratories, prove that Lucky Strike is milder than any other principal brand. Rich taste? Yes, the full, rich taste of truly fine tobacco.

Only fine tobacco gives you both real mildness and rich taste. And Lucky Strike means fine tobacco. So enjoy the happy blending that combines perfect mildness with a rich, true tobacco taste. Be Happy—Go Lucky!

## L.S./M.F.T.-Lucky Strike Means Fine Tobacco

COPR., THE AMERICAN TOBACCO COMPANY